


# Undiagnosed diabetes based on HbA<sub>1c</sub> by socioeconomic status and healthcare consumption in the Tromsø Study 1994–2016

Paz Lopez-Doriga Ruiz <sup>1,2</sup>, Laila Arnesdatter Hopstock,<sup>3,4</sup> Anne Elise Eggen,<sup>3</sup> Inger Njølstad,<sup>3</sup> Guri Grimnes,<sup>5,6</sup> Lars C Stene,<sup>1</sup> Hanne L Gulseth<sup>1</sup>

**To cite:** Ruiz PL-D, Hopstock LA, Eggen AE, *et al*. Undiagnosed diabetes based on HbA<sub>1c</sub> by socioeconomic status and healthcare consumption in the Tromsø Study 1994–2016. *BMJ Open Diab Res Care* 2021;**9**:e002423. doi:10.1136/bmjdr-2021-002423

► Additional supplemental material is published online only. To view, please visit the journal online (<http://dx.doi.org/10.1136/bmjdr-2021-002423>).

LCS and HLG are joint senior authors.

Received 5 June 2021  
Accepted 21 October 2021



© Author(s) (or their employer(s)) 2021. Re-use permitted under CC BY-NC. No commercial re-use. See rights and permissions. Published by BMJ.

For numbered affiliations see end of article.

## Correspondence to

Dr Paz Lopez-Doriga Ruiz;  
Paz.Lopez-Doriga.Ruiz@fhi.no

## ABSTRACT

**Introduction** We aimed to investigate whether the proportion of undiagnosed diabetes varies by socioeconomic status and healthcare consumption, in a Norwegian population screened with glycated hemoglobin (HbA<sub>1c</sub>).

**Research design and methods** In this cohort study, we studied age-standardized diabetes prevalence using data from men and women aged 40–89 years participating in four surveys of the Tromsø Study with available data on HbA<sub>1c</sub> and self-reported diabetes: 1994–1995 (n=6720), 2001 (n=5831), 2007–2008 (n=11 987), and 2015–2016 (n=20 170). We defined undiagnosed diabetes as HbA<sub>1c</sub> ≥6.5% (48 mmol/mol) and no self-reported diabetes. We studied the association of education, income and contact with a general practitioner on undiagnosed diabetes and estimated adjusted prevalence ratio (aPR) from multivariable adjusted (age, sex, body mass index) log-binomial regression.

**Results** Higher education was associated with lower prevalence of diagnosed and undiagnosed diabetes. Those with secondary and tertiary education had lower prevalence of undiagnosed diabetes (aPR for tertiary vs primary: 0.54, 95% CI: 0.44 to 0.66). Undiagnosed as a proportion of all diabetes was also significantly lower in those with tertiary education (aPR:0.78, 95% CI: 0.65 to 0.93). Household income was also negatively associated with prevalence of undiagnosed diabetes. Across the surveys, approximately 80% of those with undiagnosed diabetes had been in contact with a general practitioner the last year, similar to those without diabetes.

**Conclusions** Undiagnosed diabetes was lower among participants with higher education. The hypothesis that those with undiagnosed diabetes had been less in contact with a general practitioner was not supported.

## INTRODUCTION

Diabetes is a chronic metabolic condition characterized by high blood glucose levels. Type 2 diabetes may especially be unrecognized for several years, and it has been estimated that 25%–50% of all diabetes cases are undiagnosed.<sup>1 2</sup> Monitoring the proportion of undiagnosed diabetes is critical to estimate the total diabetes burden and to evaluate

## Significance of this study

### What is already known about this subject?

► Low socioeconomic status is associated with higher prevalence of undiagnosed diabetes.

### What are the new findings?

► Lower education was associated with higher prevalence of undiagnosed diabetes.  
► Lower income was also associated with undiagnosed diabetes even after adjustment for education.  
► Nearly 80% of those with undiagnosed diabetes had been in contact with a general practitioner the last year.

### How might these results change the focus of research or clinical practice?

► Those with low education had higher prevalence and higher proportion of undiagnosed diabetes suggesting that efforts should be directed not only at prevention but also at diagnosis and case finding.

public health efforts to prevent and diagnose diabetes. Screening with oral glucose tolerance tests (OGTTs), fasting plasma glucose (FPG) or glycated hemoglobin (HbA<sub>1c</sub>) may identify slightly different subsets of individuals with diabetes, and result in different diabetes prevalence estimates. Yet, at present, HbA<sub>1c</sub> has become the method of choice.<sup>3 4</sup> Both the American Diabetes Association from 2009, and the WHO from 2011, have recommended HbA<sub>1c</sub> as the primary diagnostic test.<sup>5 6</sup> In Norway, HbA<sub>1c</sub> has been the preferred diagnostic method from September 2012.<sup>7</sup> As HbA<sub>1c</sub> can be used in a non-fasting state, reflects the average blood glucose in the last 8–12 weeks, and shows limited pre-analytical variation and low day-to-day variation, HbA<sub>1c</sub> is well suited for diabetes screening.<sup>6</sup>

There is limited information about time trends in undiagnosed diabetes from repeated population-based screening studies.<sup>8–12</sup> Both

prevalence and incidence of type 2 diabetes are well known to be substantially higher in people with lower indicators of socioeconomic status such as education.<sup>13–16</sup>

Fewer studies have investigated undiagnosed diabetes in association with socioeconomic status, but there is reason to believe that the prevalence of undiagnosed diabetes also varies in a similar way with socioeconomic status.<sup>117–19</sup> However, if both undiagnosed and diagnosed diabetes are more common in those with low education, it is not obvious whether undiagnosed diabetes as a proportion of all diabetes is higher in those with lower education.

An understudied question is to what degree people with undiagnosed diabetes have been seeing a doctor but were nevertheless not tested for diabetes, or they have simply not seen a doctor recently. Such information is important for targeting campaigns to reduce the occurrence of undiagnosed diabetes.

Since 1994, around 47 000 HbA<sub>1c</sub> samples have been collected in the population-based Tromsø Study.<sup>20 21</sup> We aimed to investigate whether the proportion of undiagnosed diabetes varies by educational level and income, and to what degree people with undiagnosed diabetes have been in contact with a general practitioner (GP) in the 12 months prior to the health examination.

## MATERIAL AND METHODS

### Participants

The Tromsø Study is a large population-based prospective study among inhabitants of the Tromsø municipality, North Norway, currently with a population of 77 000. The study was initiated in 1974, and seven surveys (Tromsø 1–7) have been performed to date. We used data from men and women aged 40–89 years participating in Tromsø 4 (1994–1995), Tromsø 5 (2001), Tromsø 6 (2007–2008) and Tromsø 7 (2015–2016),<sup>20–22</sup> who answered the question on self-reported diabetes and had at least one HbA<sub>1c</sub> measurement (see flow chart in online supplemental figure 1 and online supplemental methods). By design, the Tromsø 5 and Tromsø 6 surveys included different participant groups. In Tromsø 5, the largest group comprised individuals who had participated in the previous Tromsø 4 survey as well as a random sample consisted of people in the following age groups: 30, 40, 45, 60 or 75 years. In Tromsø 6, men and women who previously had participated in Tromsø 4, a 10% random sample aged 30–39 years, all individuals aged 40–42 and 60–87 years and a 40% random sample aged 43–59 years were invited.

### Data collection

Trained personnel collected blood samples and data on physiological measurements. Laboratory analyses were performed at the University Hospital of North Norway, except for HbA<sub>1c</sub> in Tromsø 4 performed at the Laboratory for Metabolic Research at the University of Tromsø and HbA<sub>1c</sub> in Tromsø 5 performed at the study site laboratory in accordance with the hospital gold standard.

HbA<sub>1c</sub> was analyzed by immunoturbidimetry with Cobras Mira Plus (Unimate 5 HbA<sub>1c</sub>, F Hoffmann-La Roche, Basel, Switzerland) (Tromsø 4),<sup>23</sup> DCA 2000 (Bayer Diagnostics, Tarrytown, New York, USA) (Tromsø 5), and by high-performance liquid chromatography with Variant II (Bio-Rad Laboratories, Hercules, California, USA) (Tromsø 6)<sup>21</sup> and Tosoh G8 (Tosoh Bioscience, San Francisco, USA) (Tromsø 7).

### Data from questionnaire and examination

Information on education, income and GP visits was retrieved from questionnaires (online supplemental methods). Attained education level was stratified into three categories: (1) primary and lower secondary, (2) higher secondary (high school or vocational school) and (3) college and university, referred in the paper as primary, secondary and tertiary education. Total household income (in the last two surveys only) was divided in three categories, based on percentiles (<33, 33–66 and over 66). Visit to a GP the previous 12 months was a yes/no question. Height and weight were measured at examination. Body mass index (BMI) was calculated as weight in kilograms divided by the square of height in meters (kg/m<sup>2</sup>). BMI was stratified into normal (<25 kg/m<sup>2</sup>), overweight (25–29 kg/m<sup>2</sup>), obesity class I and II (30–39 kg/m<sup>2</sup>) and obesity class III (≥40 kg/m<sup>2</sup>).

### Diabetes definition

Known diabetes was defined by the question ‘Do you have diabetes?’ retrieved from questionnaires (details described in the online supplemental methods). Undiagnosed diabetes or screening-detected diabetes was defined as HbA<sub>1c</sub> ≥6.5% (≥48 mmol/mol), and no self-reported diabetes.

### Sensitivity analysis

In Tromsø 7, self-reported diabetes also included the answer category ‘Previously’. We assessed the influence of this on our results by rerunning analyses, including participants reporting previous diabetes in the ‘known diabetes’ category.

### Statistical analysis

We estimated the crude and standardized prevalence of known and undiagnosed diabetes in the four surveys, stratified by educational level and other covariates. The various surveys’ data collections included different age groups. Therefore, the prevalence estimates were age standardized to the age distribution in the most recent survey using 5-year age groups. To assess potential influence of adjusting for covariates, we estimated adjusted prevalence ratio (aPR) and 95% CIs with log-binomial regression models and with undiagnosed diabetes as the outcome. The number of individuals with missing data on covariates was generally low and is specified in the footnotes of tables 1 and 2. Missing data were not imputed. In pooled analyses across multiple surveys, we accounted for repeated observations for individuals participating in more than one survey by using clustered robust variance.

**Table 1** Characteristics of the study participants by survey and diabetes status, the Tromsø Study 1994–2016

	Tromsø 4 1994–1995				Tromsø 5 2001				Tromsø 6 2007–2008				Tromsø 7 2015–2016			
	People without diabetes	Known diabetes	Undiagnosed diabetes	People without diabetes	Known diabetes	Undiagnosed diabetes	People without diabetes	Known diabetes	Undiagnosed diabetes	People without diabetes	Known diabetes	Undiagnosed diabetes	People without diabetes	Known diabetes	Undiagnosed diabetes	
n	6451	192	77	5386	273	172	11103	610	274	18755	1084	290	9896	445	108	
Female	3657 (56.7)	97 (50.5)	37 (48.1)	3141 (58.3)	150 (54.9)	76 (44.2)	5916 (53.3)	291 (47.7)	124 (45.3)	9896 (52.8)	445 (45.3)	108 (37.2)	9896	445	108	
Male	2794 (43.3)	95 (49.5)	40 (51.9)	2245 (41.7)	123 (45.1)	96 (55.8)	5187 (46.7)	319 (52.3)	150 (54.7)	8859 (47.2)	538 (54.7)	182 (62.8)	8859	538	182	
Age groups																
40–49	432 (6.7)	4 (2.1)	3 (3.9)	313 (5.8)	8 (2.9)	2 (1.2)	3344 (30.1)	76 (12.5)	22 (8.0)	6019 (32.1)	145 (14.7)	37 (12.8)	6019	145	37	
50–59	2562 (39.7)	37 (19.3)	16 (20.8)	989 (18.4)	27 (9.9)	20 (11.6)	2216 (20.0)	97 (15.9)	38 (13.9)	5512 (29.4)	222 (22.6)	59 (20.3)	5512	222	59	
60–69	2455 (38.1)	88 (45.8)	35 (45.5)	2219 (41.2)	108 (39.6)	63 (36.6)	3602 (32.4)	255 (41.8)	107 (39.1)	4501 (24.0)	324 (33.0)	91 (31.4)	4501	324	91	
70–79	987 (15.3)	62 (32.3)	21 (27.3)	1654 (30.7)	107 (39.2)	77 (44.8)	1534 (13.8)	136 (22.3)	77 (28.1)	2186 (11.7)	232 (23.6)	75 (25.9)	2186	232	75	
80–89	15 (0.2)	1 (0.5)	2 (2.6)	211 (3.9)	23 (8.4)	10 (5.8)	407 (3.7)	46 (7.5)	30 (10.9)	537 (2.9)	60 (6.1)	28 (9.7)	537	60	28	
Education																
Primary	3343 (51.8)	126 (65.6)	54 (70.1)	1609 (29.9)	107 (39.2)	65 (37.8)	3122 (28.1)	219 (35.9)	127 (46.4)	6365 (33.9)	341 (34.7)	121 (41.7)	6365	341	121	
Secondary	1947 (30.2)	52 (27.1)	14 (18.2)	2500 (46.4)	116 (42.5)	69 (40.1)	3689 (33.2)	208 (34.1)	90 (32.8)	8240 (43.9)	291 (29.6)	80 (27.6)	8240	291	80	
Tertiary	1124 (17.4)	13 (6.8)	8 (10.4)	1017 (18.9)	35 (12.8)	24 (14.0)	4159 (37.5)	168 (27.5)	51 (18.6)	4108 (21.9)	325 (33.1)	78 (26.9)	4108	325	78	
Income																
Low	–	–	–	–	–	–	3873 (34.9)	299 (49.0)	156 (56.9)	3773 (20.1)	337 (34.3)	95 (32.8)	3773	337	95	
Medium	–	–	–	–	–	–	3685 (33.2)	156 (25.6)	66 (24.1)	5215 (27.8)	299 (30.4)	94 (32.4)	5215	299	94	
High	–	–	–	–	–	–	2728 (24.6)	76 (12.5)	26 (9.5)	9097 (48.5)	281 (28.6)	77 (26.6)	9097	281	77	
BMI																
Mean	25.9	28.7	29.0	26.6	29.0	29.4	26.7	29.3	30.1	27.1	29.9	31.4	27.1	29.9	31.4	
<25	2780 (43.1)	45 (23.4)	18 (23.4)	1970 (36.6)	60 (22.0)	29 (16.9)	4047 (36.4)	120 (19.7)	39 (14.2)	6365 (33.9)	146 (14.9)	29 (10.0)	6365	146	29	
25–29	2785 (43.2)	80 (41.7)	29 (37.7)	2418 (44.9)	98 (35.9)	71 (41.3)	5001 (45.0)	239 (39.2)	110 (40.1)	8240 (43.9)	398 (40.5)	98 (33.8)	8240	398	98	
≥30	773 (13.5)	79 (34.9)	30 (39.0)	966 (17.9)	112 (41.0)	71 (41.3)	2038 (18.4)	249 (40.8)	124 (45.3)	4108 (21.9)	432 (43.9)	160 (55.2)	4108	432	160	

Data are n (%). Education and household income are self-reported. Education categories, primary (primary and lower secondary education), secondary (high school or vocational school) and tertiary education (college and university level), missing data on education varied from 0.6% in Tromsø 4 to 5% in Tromsø 5. Income was divided in lower third, mid-third and upper third percentiles (<33, 33–66 and over 66). Data on income were not collected in Tromsø 4 and 5. In Tromsø 6 and 7, the proportion with missing data on income was 7.7% and 3.8%, respectively. Missing data for BMI were less than 0.6% in all surveys. Missing data were not imputed. BMI, body mass index.

**Table 2** Associations between education and prevalence of undiagnosed diabetes, the Tromsø Study 1994–2016

	Undiagnosed diabetes as % of people without known diabetes			Undiagnosed as % of all diabetes		
	Primary and secondary	High school or vocational	University	Primary and secondary	High school or vocational	University
<b>Tromsø 4 1994–1995</b>						
Crude	1.00 (reference)	0.45 (0.25 to 0.81)	0.44 (0.21 to 0.93)	1.00 (reference)	0.71 (0.42 to 1.18)	1.27 (0.70 to 2.29)
Model 1*	1.00 (reference)	0.47 (0.26 to 0.85)	0.52 (0.24 to 1.10)	1.00 (reference)	0.69 (0.41 to 1.17)	1.18 (0.64 to 2.19)
Model 2*	1.00 (reference)	0.51 (0.28 to 0.93)	0.54 (0.27 to 1.20)	1.00 (reference)	0.65 (0.38 to 1.09)	1.26 (0.68 to 2.34)
<b>Tromsø 5 2001–2002</b>						
Crude	1.00 (reference)	0.69 (0.50 to 0.97)	0.59 (0.37 to 0.94)	1.00 (reference)	0.99 (0.76 to 1.29)	1.08 (0.75 to 1.55)
Model 1*	1.00 (reference)	0.80 (0.57 to 1.12)	0.79 (0.49 to 1.28)	1.00 (reference)	0.98 (0.74 to 1.28)	1.12 (0.77 to 1.62)
Model 2*	1.00 (reference)	0.83 (0.59 to 1.17)	0.87 (0.54 to 1.39)	1.00 (reference)	0.98 (0.74 to 1.29)	1.10 (0.76 to 1.59)
<b>Tromsø 6 2007–2008</b>						
Crude	1.00 (reference)	0.61 (0.47 to 0.79)	0.31 (0.22 to 0.43)	1.00 (reference)	0.82 (0.66 to 1.03)	0.63 (0.48 to 0.84)
Model 1*	1.00 (reference)	0.77 (0.59 to 1.01)	0.46 (0.33 to 0.64)	1.00 (reference)	0.85 (0.67 to 1.06)	0.67 (0.50 to 0.90)
Model 2*	1.00 (reference)	0.85 (0.64 to 1.11)	0.54 (0.39 to 0.75)	1.00 (reference)	0.86 (0.68 to 1.08)	0.68 (0.51 to 0.92)
<b>Tromsø 7 2015–2016</b>						
Crude	1.00 (reference)	0.52 (0.40 to 0.69)	0.28 (0.21 to 0.37)	1.00 (reference)	0.82 (0.64 to 1.05)	0.74 (0.57 to 0.95)
Model 1*	1.00 (reference)	0.65 (0.49 to 0.87)	0.40 (0.30 to 0.54)	1.00 (reference)	0.81 (0.63 to 1.04)	0.74 (0.57 to 0.95)
Model 2*	1.00 (reference)	0.69 (0.52 to 0.91)	0.48 (0.36 to 0.65)	1.00 (reference)	0.81 (0.63 to 1.05)	0.76 (0.59 to 0.99)

\*Model 1: adjustment for age and sex. Model 2: adjustment for age, sex and body mass index.

In addition, we accounted for time trends in education and diabetes prevalence by adjusting for age and period of survey. We assessed the relationship between HbA<sub>1c</sub> levels in the undiagnosed diabetes group and age, sex, BMI, educational level and household income. We estimated the proportion of participants visiting a GP among those without diabetes and those with undiagnosed diabetes. Stata software was used for data management and statistical analysis (StataCorp, 2019; Stata Statistical Software: V.16; College Station, Texas, USA).

## RESULTS

Analyses included 44 678 HbA<sub>1c</sub> measurements from 27 576 participants (11 619 participated in two or more surveys). The age distribution varied by survey, and the proportion of participants with obesity and tertiary education was higher in the later surveys (table 1).

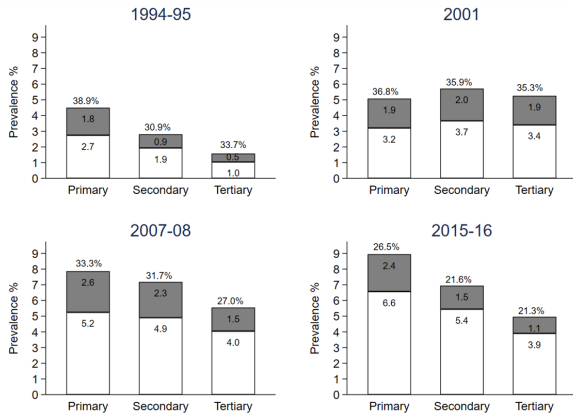
Diabetes prevalence was slightly higher among men than women throughout all surveys, and age was

positively associated with the prevalence of both known and undiagnosed diabetes (online supplemental figure 2). Undiagnosed diabetes as a proportion of all diabetes also tended to increase with age, from around 20% in those aged 40–49 years old to around 30% in those aged 80–89 years old (online supplemental figure 3). Higher BMI was strongly associated with higher prevalence of both diagnosed and undiagnosed diabetes (online supplemental figure 4). Undiagnosed diabetes as a proportion of all cases tended to increase with increasing BMI, with some variation between surveys that may be due to small number of observations in some strata. Online supplemental table 1 presents the mean HbA<sub>1c</sub> stratified by survey, age and other characteristics in those participants without diagnosed diabetes and in those with undiagnosed diabetes.

### Undiagnosed diabetes by education and income

Undiagnosed diabetes, both prevalence and as a proportion of all diabetes, was more common in the group with





**Figure 1** Age-standardized diabetes prevalence by educational level in Tromsø 4 (1994–1995), Tromsø 5 (2001), Tromsø 6 (2007–2008) and Tromsø 7 (2015–2016). In white, percentage of known diabetes and in gray percentage of undiagnosed diabetes; defined as HbA<sub>1c</sub> measurement  $\geq 6.5\%$  (48 mmol/mol) and no self-reported diabetes. The percentage value on the top of the bars represents the proportion of undiagnosed diabetes to all diabetes. HbA<sub>1c</sub>, glycated hemoglobin.

lowest education and lowest in the group with highest education (figure 1 and table 2). In pooled data from all four surveys, after adjustment for age and sex, the groups with secondary and tertiary education had lower relative prevalence of undiagnosed diabetes (aPR 0.75, 95% CI: 0.63 to 0.88 and 0.54, 95% CI: 0.44 to 0.66, respectively), compared with those with primary education only (table 3). Higher education was inversely associated with undiagnosed diabetes and this association was stronger in women than in men (table 3), with a significant interaction (p=0.04). The educational gradient in undiagnosed diabetes did not significantly vary by time (all p(interaction)>0.16).

Household income in Tromsø 6 and 7 was also inversely associated with prevalence of undiagnosed diabetes even after adjustment for education. However, there was no significant association between income and undiagnosed diabetes as a proportion of all diabetes (online supplemental table 2).

### Healthcare consumption

Around 80% people with undiagnosed diabetes had been in contact with a GP in the past 12 months (figure 2), similar to participants without diabetes, and consistent among men and women, age groups, education, income and BMI (online supplemental table 3). After adjustment for sex, age, BMI and education, the OR for GP contact in those with undiagnosed diabetes compared with those without diabetes was non-significant for the four surveys (figure 2).

### Sensitivity analysis

We reran the analyses of undiagnosed diabetes in Tromsø 7 by adding those who reported previous but not current diabetes to the group with known diabetes. This resulted

**Table 3** Association between education and prevalence of undiagnosed diabetes, the Tromsø Study 1994–2016

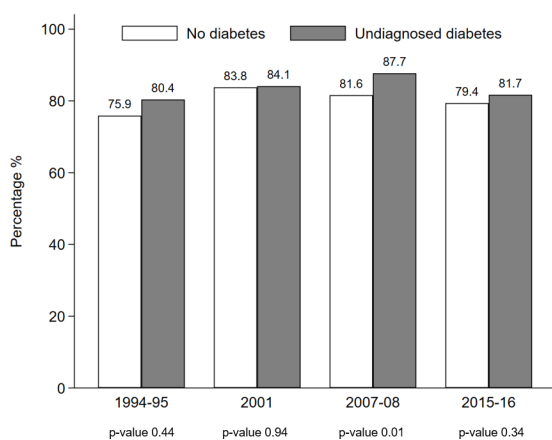
	Undiagnosed diabetes as % of all diabetes			P value
	Primary	Secondary	Tertiary	
Pooled data				
Crude (both sexes)	1 (reference)	0.87 (0.76 to 1.00)	0.72 (0.61 to 0.85)	<0.01
Model 1 (both sexes)†	1 (reference)	0.85 (0.73 to 0.98)	0.77 (0.64 to 0.91)	<0.01
Model 2 (both sexes)†	1 (reference)	0.85 (0.73 to 0.98)	0.78 (0.65 to 0.93)	<0.01
Crude men	1 (reference)	0.83 (0.69 to 0.99)	0.72 (0.59 to 0.88)	<0.01
Model 1 men†	1 (reference)	0.83 (0.69 to 1.00)	0.78 (0.64 to 0.97)	0.02
Model 2 men†	1 (reference)	0.83 (0.69 to 1.00)	0.79 (0.64 to 0.98)	0.02
Crude women	1 (reference)	0.88 (0.71 to 1.09)	0.65 (0.49 to 0.87)	<0.01
Model 1 women†	1 (reference)	0.85 (0.68 to 1.06)	0.72 (0.53 to 0.97)	0.02
Model 2 women†	1 (reference)	0.85 (0.68 to 1.06)	0.72 (0.53 to 0.98)	0.02

Education categories, primary (primary and lower secondary education), secondary (high school or vocational school) and tertiary education (college and university level).

†Numbers vary slightly due to missing data for some covariates (see table 1); missing body mass index: 164 (0.6%).

‡Model 1: adjustment for age, sex and period of survey. Model 2: adjustment for age, sex, body mass index and period of survey.

§Model 1: adjustment for age and period of survey. Model 2: adjustment for age, body mass index and period of survey.



**Figure 2** Percentage of participants who visited a general practitioner during the last 12 months prior to screening among participants with undiagnosed diabetes and no diabetes. Tromsø 4 (1994–1995), Tromsø 5 (2001), Tromsø 6 (2007–2008) and Tromsø 7 (2015–2016). In white, percentage of participants without diabetes and in gray percentage of undiagnosed diabetes, defined by an HbA<sub>1c</sub> measurement  $\geq 6.5\%$  (48 mmol/mol) and not self-reported diabetes. After adjustment for sex, age, BMI and education, the OR for general practitioner contacts in those with undiagnosed diabetes compared with those without diabetes was 1.18 ( $p=0.64$ ) in Tromsø 4. In Tromsø 5, the OR was 0.84 ( $p=0.45$ ), in Tromsø 6 the OR was 1.09 ( $p=0.67$ ) and in Tromsø 7 the OR was 0.80 ( $p=0.17$ ). Results stratified by sex, age, education, income, and BMI are shown in the online supplemental table 3. BMI, body mass index; HbA<sub>1c</sub>, glycated hemoglobin.

in undiagnosed diabetes as a proportion of all cases being lower in Tromsø 7 (20.9%, 95% CI: 18.8 to 23.1), while stratification by educational level showed similar proportions of undiagnosed diabetes cases as in the main analyses, 24.9%, 20.0% and 19.4% for primary, secondary, and tertiary education, respectively.

We studied the influence of repeated participation in previous surveys and related diabetes screening. The repetitive surveys may have influenced the proportion of undiagnosed diabetes in the study population at later time points (online supplemental table 4).

## DISCUSSION

Using ~45 000 HbA<sub>1c</sub> measurements from repeated population-based surveys during 1994–2016 in Tromsø municipality in Norway, we found that the prevalence of undiagnosed diabetes was lower among those with higher education, and we found a similar pattern for undiagnosed diabetes as a proportion of all diabetes. Our hypothesis that people with undiagnosed diabetes tend to seek medical care less often was not supported as most participants with undiagnosed diabetes had been in contact with a GP to the same extent as participants without diabetes.

The proportion of undiagnosed cases depends on the diagnostic criteria used, with a higher prevalence of

undiagnosed cases typically found when using OGTT, and to some extent FPG, compared with a definition based on HbA<sub>1c</sub>.<sup>24 25</sup> The Tromsø Study has been repeated at regular intervals and participants were provided information about abnormal values, and we believe that this may have affected the proportion of undiagnosed diabetes and the screening in the Tromsø municipality,<sup>12</sup> especially in the Tromsø 5 and Tromsø 6 surveys where many individuals had participated in previous survey.

Social inequality in health is a major public health challenge.<sup>26</sup> Understanding determinants of such inequalities is critical to improve the healthcare system and get optimal health treatments to all individuals. A previous study of older women in the UK based on FPG did not report any association between socioeconomic status and undiagnosed diabetes.<sup>27</sup> In a study using National Health and Nutrition Examination Survey (NHANES) data (men only), higher proportion of undiagnosed cases was found in those with low education compared with those with high education, consistent with our results.<sup>18</sup> Our findings that education and income were associated with undiagnosed diabetes were consistent with a British study on an annual sample from 2009 to 2013.<sup>28</sup>

It is important to clarify the extent to which people with undiagnosed diabetes have been in contact with the healthcare service, as this could identify a room for improvement in the system and there are few published studies on this topic.<sup>11 29 30</sup> Our results indicate that most participants with undiagnosed diabetes had been in contact with a GP during the last 12 months, similar results were found in a Danish study where 72% of those with undiagnosed diabetes had been in contact with their GP.<sup>29</sup> Clinical guidelines typically advise GPs to test HbA<sub>1c</sub> in patients with risk factors such as high BMI, high age, and family history of diabetes. However, many of the screening-identified participants in our study had in fact high BMI or age. In contrast to our findings, studies from Germany<sup>30</sup> and the USA<sup>11</sup> found that those with undiagnosed diabetes reported less frequent contact with the health system in the previous year.

We could speculate that opportunistic screening for diabetes has increased over time in Norway, based on the decreased proportion in undiagnosed diabetes and the increased availability of HbA<sub>1c</sub> point-of-care testing. HbA<sub>1c</sub> was not recommended as a diagnostic test in Norway before 2012, however GPs may have started using the test before that time.

## Strengths and limitations

The main strength of the present study was the use of a large population-based sample and a high number of HbA<sub>1c</sub> measurements. Data collection throughout two decades enabled us to examine the association of education on undiagnosed diabetes prevalence over time. We also provided updated estimates of undiagnosed diabetes across categories by sex, age groups, and BMI. Our study included people born over a long period of time, during which the average educational attainment has increased.

We controlled confounding by time trends by adjusting for both age and period of survey.

HbA<sub>1c</sub> test is highly specific but has poor sensitivity to diagnose diabetes compared with other methods, especially OGTT.<sup>31</sup> Some misclassification is therefore expected. Furthermore, we classified cases based on one single test, without the recommended confirmatory test for clinical diagnosis in asymptomatic individuals.<sup>11</sup> On balance, however, HbA<sub>1c</sub> is probably the best single test for use in epidemiological studies.<sup>25</sup> During the study period, the WHO diagnostic criteria for diabetes used changed twice. In 1999, the diagnostic cut-off for FPG was lowered from 7.8 mmol/L to 7.0 mmol/L, that may have led to a lower prevalence of known diabetes in the earliest data collection (Tromsø 4). However, before 1999, OGTT was commonly regarded as a gold standard for diagnosis and use for this test in clinical practice would have the opposite effect due to its higher sensitivity. Another limitation of our study is that HbA<sub>1c</sub> was measured using different methods in the four data collections, and HbA<sub>1c</sub> instruments were not calibrated across surveys.

The pooled estimate should be interpreted with caution due to differences in sampling procedures across the surveys, although we have adjusted for the main confounders in the regression analysis. Some age groups were over-represented in some surveys, however, we age standardized the data using the last survey (with a high number of participants) to enable comparison between surveys. The pooled results of education and diabetes are driven mostly by results from Tromsø 6 and 7 due to larger number of participants. However, while there was some variation in point estimates of educational gradient over time, this variation was not statistically significant. In the latest survey, the question on self-reported diabetes may have introduced a possibility of misclassification by including an option to report previous but not current diabetes. While diabetes is normally a chronic disease, participants who previously, but not currently received glucose-lowering medication, may have answered that they previously had diabetes. However, the sensitivity analysis did not show any difference in the association with education and undiagnosed diabetes when these participants were included.

Diabetes status was self-reported. While this may be regarded a weakness, several studies had reported a high concordance between self-reported diabetes and medical records.<sup>32–34</sup> As most other screening studies, we could not distinguish between type 1 and type 2 diabetes, but type 2 diabetes is known to constitute around 90% or more of all diabetes in this age group. We cannot rule out that some women with previous gestational diabetes may have reported having had diabetes. In the last survey, most of these women are likely to have reported having had diabetes previously (and not currently), and we therefore believe that gestational diabetes erroneously reported as known diabetes has not seriously biased our result (women who were currently pregnant were

removed from the analysis so current gestational diabetes cannot have influenced our results).

Population-based studies may be prone to selection bias, due to healthier participants being more willing to participate.<sup>35</sup> However, individuals with undiagnosed diabetes may be ‘symptom free’ in most of the cases. The Tromsø Study is representative for the inhabitants of Tromsø municipality in the studied age groups, with most of the participants being Caucasian, however, ethnic minorities are under-represented.

In conclusion, undiagnosed diabetes was lower among participants with tertiary education, both in prevalence and as a proportion of all diabetes. There was no difference in the proportion of participants in contact with their GP among undiagnosed diabetes compared with participants without diabetes. Knowing the proportion of undiagnosed diabetes and the distribution in different socioeconomic strata may help to develop targeted strategies in screening and prevention.

#### Author affiliations

<sup>1</sup>Department of Chronic Diseases and Ageing, Norwegian Institute of Public Health, Oslo, Norway

<sup>2</sup>Department of Endocrinology, Morbid Obesity and Preventive Medicine, Oslo University Hospital, Oslo, Norway

<sup>3</sup>Department of Community Medicine, UiT The Arctic University of Norway, Tromsø, Norway

<sup>4</sup>Pandemic Unit, Tromsø Municipality, Tromsø, Norway

<sup>5</sup>Department of Clinical Medicine, The Arctic University of Norway, Tromsø, Norway

<sup>6</sup>Division of Internal Medicine, University Hospital of North Norway, Tromsø, Norway

**Acknowledgements** The authors thank the participants of the Tromsø Study for their participation. The surveys in 1994–1995 and 2001 were conducted in collaboration with The National Health Screening Service.

**Contributors** PLDR and LCS had full access to all the data in the study and take responsibility for the integrity of the data and the accuracy of the data analysis. LCS, HLG and LAH were responsible for study concept and design. AEE and GG were responsible for data acquisition, planning and funding. All authors did the analysis or interpretation of data. PLDR wrote the first draft of the manuscript and subsequent revisions. PLDR and LCS performed the statistical analyses. LAH and HLG provided administrative, technical, or material support. All authors critically revised the paper for important intellectual content and approved the final version.

**Funding** The Tromsø Study has been funded from several sources, including UiT The Arctic University of Norway and Northern Norway Regional Health Authority (Helse Nord RHF). The Norwegian Diabetes Association contributed to funding for HbA<sub>1c</sub> testing. This research was partly supported by a grant from the South-Eastern Norway Regional Health Authority (Helse Sør-Øst RHF, grant to HLG, to support salary to PLDR, grant number 2019114).

**Disclaimer** The sponsors had no role in the design and conduct of the study; collection, management, analysis, and interpretation of the data; preparation, review, or approval of the manuscript; and decision to submit the manuscript for publication.

**Competing interests** None declared.

**Patient consent for publication** Not required.

**Ethics approval** The Regional Committee for Medical and Health Research Ethics of North Norway approved the current study and analysis (Regional Committees for Medical and Health Research Ethics D, reference number 74507). All the participants have given informed consent before taking part in the study.

**Provenance and peer review** Not commissioned; externally peer reviewed.

**Data availability statement** Data may be obtained from a third party and are not publicly available.

**Supplemental material** This content has been supplied by the author(s). It has not been vetted by BMJ Publishing Group Limited (BMJ) and may not have been



peer-reviewed. Any opinions or recommendations discussed are solely those of the author(s) and are not endorsed by BMJ. BMJ disclaims all liability and responsibility arising from any reliance placed on the content. Where the content includes any translated material, BMJ does not warrant the accuracy and reliability of the translations (including but not limited to local regulations, clinical guidelines, terminology, drug names and drug dosages), and is not responsible for any error and/or omissions arising from translation and adaptation or otherwise.

**Open access** This is an open access article distributed in accordance with the Creative Commons Attribution Non Commercial (CC BY-NC 4.0) license, which permits others to distribute, remix, adapt, build upon this work non-commercially, and license their derivative works on different terms, provided the original work is properly cited, appropriate credit is given, any changes made indicated, and the use is non-commercial. See: <http://creativecommons.org/licenses/by-nc/4.0/>.

#### ORCID iD

Paz Lopez-Doriga Ruiz <http://orcid.org/0000-0002-3404-2060>

#### REFERENCES

- 1 Beagley J, Guariguata L, Weil C, *et al*. Global estimates of undiagnosed diabetes in adults. *Diabetes Res Clin Pract* 2014;103:150–60.
- 2 Cho NH, Shaw JE, Karuranga S, *et al*. IDF diabetes atlas: global estimates of diabetes prevalence for 2017 and projections for 2045. *Diabetes Res Clin Pract* 2018;138:271–81.
- 3 DECODE Study Group. Will new diagnostic criteria for diabetes mellitus change phenotype of patients with diabetes? reanalysis of European epidemiological data. *BMJ* 1998;317:371–5.
- 4 Rosella LC, Lebenbaum M, Fitzpatrick T, *et al*. Prevalence of prediabetes and undiagnosed diabetes in Canada (2007–2011) according to fasting plasma glucose and HbA1c screening criteria. *Diabetes Care* 2015;38:1299–305.
- 5 American Diabetes Association. Diagnosis and classification of diabetes mellitus. *Diabetes Care* 2010;33 Suppl 1:S62–9.
- 6 World Health Organization. *Use of glycated haemoglobin (HbA1c) in diagnosis of diabetes mellitus: abbreviated report of a WHO consultation*. World Health Organization, 2011.
- 7 Helsedirektoratet. HbA1c som diagnostikum for diabetes, 2012. Available: <https://www.helsedirektoratet.no/retningslinjer/diabetes/diagnostikk-av-diabetes-risikovurdering-og-oppfolging-av-personer-med-hoy-risiko-for-a-utvikle-diabetes/diagnostiske-kriterier-for-diabetes#null-begrunnelse> [Accessed Feb 2018].
- 8 Lee J-W, Kang H-T, Lim H-J, *et al*. Trends in diabetes prevalence among Korean adults based on Korean National health and nutrition examination surveys III–VI. *Diabetes Res Clin Pract* 2018;138:57–65.
- 9 Menke A, Casagrande S, Geiss L, *et al*. Prevalence of and trends in diabetes among adults in the United States, 1988–2012. *JAMA* 2015;314:1021–9.
- 10 Li R, Lu W, Jiang QW, *et al*. Increasing prevalence of type 2 diabetes in Chinese adults in Shanghai. *Diabetes Care* 2012;35:1028–30.
- 11 Selvin E, Wang D, Lee AK, *et al*. Identifying trends in undiagnosed diabetes in U.S. adults by using a confirmatory definition: a cross-sectional study. *Ann Intern Med* 2017;167:769–76.
- 12 Langholz PL, Wilsgaard T, Njølstad I, *et al*. Trends in known and undiagnosed diabetes, HbA1c levels, cardiometabolic risk factors and diabetes treatment target achievement in repeated cross-sectional surveys: the population-based Tromsø study 1994–2016. *BMJ Open* 2021;11:e041846.
- 13 Read SH, Kerssens JJ, McAllister DA, *et al*. Trends in type 2 diabetes incidence and mortality in Scotland between 2004 and 2013. *Diabetologia* 2016;59:2106–13.
- 14 Ruiz PLD, Stene LC, Bakken IJ, *et al*. Decreasing incidence of pharmacologically and non-pharmacologically treated type 2 diabetes in Norway: a nationwide study. *Diabetologia* 2018;61:2310–8.
- 15 Agardh E, Allebeck P, Hallqvist J, *et al*. Type 2 diabetes incidence and socio-economic position: a systematic review and meta-analysis. *Int J Epidemiol* 2011;40:804–18.
- 16 Willi C, Bodenmann P, Ghali WA, *et al*. Active smoking and the risk of type 2 diabetes: a systematic review and meta-analysis. *JAMA* 2007;298:2654–64.
- 17 Rathmann W, Haastert B, Icks A, *et al*. Sex differences in the associations of socioeconomic status with undiagnosed diabetes mellitus and impaired glucose tolerance in the elderly population: the KORA survey 2000. *Eur J Public Health* 2005;15:627–33.
- 18 Smith JP. Nature and causes of trends in male diabetes prevalence, undiagnosed diabetes, and the socioeconomic status health gradient. *Proc Natl Acad Sci U S A* 2007;104:13225–31.
- 19 Wu H, Bragg F, Yang L, *et al*. Sex differences in the association between socioeconomic status and diabetes prevalence and incidence in China: cross-sectional and prospective studies of 0.5 million adults. *Diabetologia* 2019;62:1420–9.
- 20 Jacobsen BK, Eggen AE, Mathiesen EB, *et al*. Cohort profile: the Tromsø study. *Int J Epidemiol* 2012;41:961–7.
- 21 Eggen AE, Mathiesen EB, Wilsgaard T, *et al*. The sixth survey of the Tromsø study (Tromsø 6) in 2007–08: collaborative research in the interface between clinical medicine and epidemiology: study objectives, design, data collection procedures, and attendance in a multipurpose population-based health survey. *Scand J Public Health* 2013;41:65–80.
- 22 The Arctic University of Norway. The Tromsø study. Available: <https://uit.no/research/tromsostudy> [Accessed Oct 2021].
- 23 Grimnes G, Emaus N, Joakimsen RM, *et al*. Baseline serum 25-hydroxyvitamin D concentrations in the Tromsø study 1994–95 and risk of developing type 2 diabetes mellitus during 11 years of follow-up. *Diabet Med* 2010;27:1107–15.
- 24 Hutchinson MS, Joakimsen RM, Njølstad I, *et al*. Glycated hemoglobin in diagnosis of diabetes mellitus and pre-diabetes; validation by oral glucose tolerance test. The Tromsø OGTT study. *J Endocrinol Invest* 2012;35:835–40.
- 25 Cowie CC, Rust KF, Byrd-Holt DD, *et al*. Prevalence of diabetes and high risk for diabetes using A1c criteria in the U.S. population in 1988–2006. *Diabetes Care* 2010;33:562–8.
- 26 Mackenbach JP, Stirbu I, Roskam A-JR, *et al*. Socioeconomic inequalities in health in 22 European countries. *N Engl J Med* 2008;358:2468–81.
- 27 Lawlor DA, Patel R, Fraser A, *et al*. The association of life course socio-economic position with diagnosis, treatment, control and survival of women with diabetes: findings from the British women's heart and health study. *Diabet Med* 2007;24:892–900.
- 28 Moody A, Cowley G, Ng Fat L, *et al*. Social inequalities in prevalence of diagnosed and undiagnosed diabetes and impaired glucose regulation in participants in the health surveys for England series. *BMJ Open* 2016;6:e010155.
- 29 Heltberg A, Andersen JS, Sandholdt H, *et al*. Predictors of undiagnosed prevalent type 2 diabetes - The Danish General Suburban Population Study. *Prim Care Diabetes* 2018;12:13–22.
- 30 Du Y, Baumert J, Paprott R, *et al*. Factors associated with undiagnosed type 2 diabetes in Germany: results from German health interview and examination survey for adults 2008–2011. *BMJ Open Diabetes Res Care* 2020;8:e001707.
- 31 NCD Risk Factor Collaboration (NCD-RisC). Effects of diabetes definition on global surveillance of diabetes prevalence and diagnosis: a pooled analysis of 96 population-based studies with 331,288 participants. *Lancet Diabetes Endocrinol* 2015;3:624–37.
- 32 Midtjell K, Holmen J, Bjørndal A, *et al*. Is questionnaire information valid in the study of a chronic disease such as diabetes? The Nord-Trøndelag diabetes study. *J Epidemiol Commun H* 1992;46:537–42.
- 33 Tisnado DM, Adams JL, Liu H, *et al*. What is the concordance between the medical record and patient self-report as data sources for ambulatory care? *Med Care* 2006;44:132–40.
- 34 Li H-L, Fang J, Zhao L-G, *et al*. Personal characteristics effects on validation of self-reported type 2 diabetes from a cross-sectional survey among Chinese adults. *J Epidemiol* 2020;30:516–21.
- 35 Langhammer A, Krokstad S, Romundstad P, *et al*. The HUNT study: participation is associated with survival and depends on socioeconomic status, diseases and symptoms. *BMC Med Res Methodol* 2012;12:143.