

TORE MORTEN ANDREASSEN

KOMPGITAR BASICS



TMA Music 33

ISBN 978-82-92985-36-6

ISMN 979-0-706693-36-1

1. Ters/Septim på 3, 4 streng - Bluesskjema

1. Ters/Septim på 3, 4 streng - Bluesskjema

Chords: Bb7, Eb7, Bb7, Eb7, Bb7, F7, Eb7, Bb7, F7

2. Omvending

2. Omvending

Chords: Bb7, Eb7, Bb7, Eb7, Bb7, F7, Eb7, Bb7, F7

3. Spilles på 2, 3, 4 streng

Bb7 Eb9 Bb7
 Eb9 Bb7
 F7 Eb9 Bb7 F7

4. Omvending

Bb9 Eb13 Bb9
 Eb13 Bb9
 F13 Eb13 Bb9 F13

7. Kromatisk nedadgående akkord leder til neste akkord

① H13 B \flat 13 E9 E \flat 9 H13 B \flat 13 H13 B \flat 13 E9
 ②
 ③
 ④

E \flat 9 E9 E \flat 9 H13 B \flat 13 H13 B \flat 13 F \sharp 9

F9 E9 E \flat 9 H13 B \flat 13 E9 F9 H13

10

8. Kromatisk opp- og nedadgående akkorder

① A13 B \flat 13 E9 E \flat 9 A13 B \flat 13 H13 B \flat 13 D9
 ②
 ③
 ④

E \flat 9 E9 E \flat 9 A13 B \flat 13 H13 B \flat 13 E9

F9 E9 E \flat 9 A13 B \flat 13 F \sharp 9 F9 A13

10

9. Kromatisk ned- og oppadgående akkorder

Chord progression for Exercise 9:

- Staff 1: H13, B \flat 13, D9, E \flat 9, H13, B \flat 13, A13, B \flat 13, E9
- Staff 2: E \flat 9, D9, E \flat 9, H13, B \flat 13, A13, B \flat 13, F#9
- Staff 3: F9, D9, E \flat 9, H13, B \flat 13, E9, F9, A13

10. Alternativ komfigur, ters/septim

Chord progression for Exercise 10:

- Staff 1: B \flat 7, E \flat 7, B \flat 7
- Staff 2: E \flat 7, B \flat 7
- Staff 3: F7, E \flat 7, B \flat 7, F7

11. Spilles på 2, 3, 4 streng

Musical notation for exercise 11, strings 2, 3, and 4. The piece is in 4/4 time and B-flat major. It consists of three staves of music. The first staff starts with a Bb13 chord and includes circled numbers 2, 3, and 4. The second staff starts with an Eb9 chord and includes a circled number 5. The third staff starts with an F9 chord. The chord progression is: Bb13, Eb9, Bb13, Eb9, Bb13, F9.

12. Spilles på 1, 2, 3, 4 streng

Musical notation for exercise 12, strings 1, 2, 3, and 4. The piece is in 4/4 time and B-flat major. It consists of three staves of music. The first staff starts with a Bb13 chord and includes circled numbers 2, 3, and 4. The second staff starts with an Eb9 chord and includes a circled number 5. The third staff starts with an F9 chord. The chord progression is: Bb13, Eb9, Bb13, Eb9, Bb13, F9.

13. Annenhver akkord kromatisk oppadgående bevegelse

Exercise 13 is a 4-measure phrase in 4/4 time, starting with a whole rest. The notes are: 1. A13, Bb13 (measures 1-2); 2. Eb9 (measure 3); 3. A13, Bb13 (measure 4). The exercise is repeated on two staves. The first staff (measures 6-10) has chords: Eb9 (6), A13, Bb13 (7-8), E9, F9 (9-10). The second staff (measures 11-14) has chords: Eb9 (11), A13, Bb13 (12), F9 (13), A13 (14). Fingerings are indicated with circled numbers 1-4.

14. Annenhver akkord Kromatisk nedadgående bevegelse

Exercise 14 is a 4-measure phrase in 4/4 time, starting with a whole rest. The notes are: 1. H13, Bb13 (measures 1-2); 2. Eb9 (measure 3); 3. H13, Bb13 (measure 4). The exercise is repeated on two staves. The first staff (measures 6-10) has chords: Eb9 (6), H13, Bb13 (7-8), F#9, F9 (9-10). The second staff (measures 11-14) has chords: Eb9 (11), H13, Bb13 (12), F9 (13), H13 (14). Fingerings are indicated with circled numbers 1-4.

15. Kromatisk ned- og oppadgående bevegelse

Chord progression for exercise 15:

- Staff 1: H13, Bb13, D9, Eb9, H13, Bb13, A13, Bb13, E9
- Staff 2: Eb9, D9, Eb9, H13, Bb13, A13, Bb13, F#9, F9, D9
- Staff 3: Eb9, H13, Bb13, F#9, F9, H13

16. Kromatisk opp- og nedadgående bevegelse

Chord progression for exercise 16:

- Staff 1: A13, Bb13, E9, Eb9, A13, Bb13, H13, Bb13, D9
- Staff 2: Eb9, E9, Eb9, A13, Bb13, H13, Bb13, E9, F9, E9
- Staff 3: Eb9, A13, Bb13, H13, F9, A13

17. Kromatisk ned- og oppadgående bevegelse

① H13 B♭13 D9 E♭9 H13 B♭13 A13 B♭13 E9
 ②
 ③
 ④

6 E♭9 D9 E♭9 H13 B♭13 A13 B♭13 F♯9 F9 D9

11 E♭9 H13 B♭13 F♯9 F9 H13

18. Shuffle - etterslag

B♭13 > > E♭9 B♭13
 ① V
 ②
 ③
 ④

5 E♭9 B♭13

9 F9 E♭9 B♭13

19. Shuffle - trioletterslag

B \flat 13 > > Eb9 B \flat 13 B \flat 13
 ①
 ②
 ③
 ④
 3 3 3 3 3 3 3 3 3 3 3 3 3 3 3 3 3 3
 Eb9 Eb9 B \flat 13 B \flat 13
 5
 3 3 3 3 3 3 3 3 3 3 3 3 3 3 3 3 3 3
 F9 Eb9 B \flat 13 F9
 9
 3 3 3 3 3 3 3 3 3 3 3 3 3 3 3 3 3 3

20. kromatisk nedadgående bevægelse

H13 B \flat 13 E9 Eb9 H13 B \flat 13 H13 B \flat 13 E9
 ①
 ②
 ③
 ④
 Eb9 E9 Eb9 E9 Eb9 H13 B \flat 13 F#9
 6
 F9 E9 Eb9 H13 B \flat 13 F#9 F9 H13
 10

23. Ters og septim

G7
 C7
 D7 C7 G7 D7

24. Ters og septim omvendning

G7
 C7
 D7 C7 G7 D7

25. Spilles på 2, 3, 4 streng

G 13

C 9

G 13

5

D 9

C 9

G 13

D 9

9

26. Spilles på 2,3,4 streng, omvendning

G 9

C 13

G 9

5

D 13

C 13

G 9

D 13

9

27. Spilles på 1, 2, 3, 4 streng

Musical score for exercise 27, titled "Spilles på 1, 2, 3, 4 streng". The score is written in 4/4 time and consists of three staves of music. Above the first staff, the chord G13 is indicated. Above the first four measures of the first staff, there are four "V" symbols, each with a small square above it, indicating vibrato. The first staff contains measures 1 through 4. The second staff contains measures 5 through 8. The third staff contains measures 9 through 12. Chord changes are indicated below the staff: C9 at the start of measure 1, G13 at the start of measure 5, D9 at the start of measure 8, and G13 at the start of measure 11. The notation includes various rhythmic patterns, including eighth and sixteenth notes, and rests.

28. Spilles på 1, 2, 3, 4 streng, omvendning

Musical score for exercise 28, titled "Spilles på 1, 2, 3, 4 streng, omvendning". The score is written in 4/4 time and consists of three staves of music. Above the first staff, the chord G9 is indicated. Above the first four measures of the first staff, there are four "V" symbols, each with a small square above it, indicating vibrato. The first staff contains measures 1 through 4. The second staff contains measures 5 through 8. The third staff contains measures 9 through 12. Chord changes are indicated below the staff: C13 at the start of measure 1, G9 at the start of measure 5, D13 at the start of measure 8, C13 at the start of measure 11, G9 at the start of measure 12, and D13 at the start of measure 13. The notation includes various rhythmic patterns, including eighth and sixteenth notes, and rests.

30. Ters/Septim etterslag

③
④
5
9

G7 C7 G7 D7 C7 G7 D7

31. Omvending

G7
③
④
5
9

C7 G7 D7 C7 G7 D7

32. Spilles på 2, 3, 4 streng

Exercise 32 is a guitar piece in 4/4 time, consisting of three staves of music. The first staff (measures 1-4) features a G13 chord and includes fingering diagrams for the first four strings (2, 3, 4) and accents (>) on the first and third strings. The second staff (measures 5-8) features a C9 chord in measures 5-6 and a G13 chord in measures 7-8. The third staff (measures 9-12) features a D9 chord in measures 9-10, a C9 chord in measure 11, and a G13 chord in measure 12. The piece concludes with a D9 chord in measure 13.

33. Omvendning

Exercise 33 is a guitar piece in 4/4 time, consisting of three staves of music. The first staff (measures 1-4) features a G9 chord and includes fingering diagrams for the first four strings (2, 3, 4) and accents (>) on the first and third strings. The second staff (measures 5-8) features a C13 chord in measures 5-6 and a G9 chord in measures 7-8. The third staff (measures 9-12) features a D13 chord in measures 9-10, a C13 chord in measure 11, and a G9 chord in measure 12. The piece concludes with a D13 chord in measure 13.

34. Spilles på 1, 2, 3, 4 streng

Musical score for exercise 34, titled "Spilles på 1, 2, 3, 4 streng". The score is written in 4/4 time and consists of three staves. The first staff begins with a treble clef and a key signature of one flat (B-flat). It features a sequence of chords: G13 (measures 1-4), C9 (measures 5-8), G13 (measures 9-12), and D9 (measures 13-16). The notation includes rhythmic patterns with accents and slurs. The second staff continues the sequence with C9 (measures 17-20) and G13 (measures 21-24). The third staff concludes with D9 (measures 25-28), C9 (measures 29-32), G13 (measures 33-36), and D9 (measures 37-40).

35. Omvendning

Musical score for exercise 35, titled "Omvending". The score is written in 4/4 time and consists of three staves. The first staff begins with a treble clef and a key signature of one flat (B-flat). It features a sequence of chords: G9 (measures 1-4), C13 (measures 5-8), G9 (measures 9-12), and D13 (measures 13-16). The notation includes rhythmic patterns with accents and slurs. The second staff continues the sequence with C13 (measures 17-20) and G9 (measures 21-24). The third staff concludes with D13 (measures 25-28), C13 (measures 29-32), G9 (measures 33-36), and D13 (measures 37-40).

36. Kromatisk oppadgående bevægelse

F#13 G13 F#13 G13 H9
 C9 F#13 G13 C#9
 D9 H9 C9 F#13 G13 C#9 D9 F#13

37. Omvendning, kromatisk oppadgående bevægelse

F#9 G9 F#9 G9 H13
 C13 F#9 G9 C#13
 D13 H13 C13 F#9 G9 C#13 D13 F#9

38. Kromatisk nedadgående bevægelse: 1, 2, 3, 4 streng

Chord progression for exercise 38:

- Measures 1-2: C9
- Measures 3-4: G#13 G13
- Measures 5-6: G#13 G13
- Measures 7-8: D#9
- Measures 9-10: D9
- Measures 11-12: C#9 C9
- Measures 13-14: G#13 G13
- Measures 15-16: D#9 D9
- Measures 17-18: G#13

39. Omvendning, kromatisk nedadgående bevægelse

Chord progression for exercise 39:

- Measures 1-2: C13
- Measures 3-4: G#9 G9
- Measures 5-6: G#9 G9
- Measures 7-8: D#13
- Measures 9-10: D13
- Measures 11-12: C#13 C13
- Measures 13-14: G#9 G9
- Measures 15-16: D#13 D13
- Measures 17-18: G#9

40. Kromatisk opp- og nedadgående bevegelse

F#13G13 G#13 G13 H9
 C9 G#13 G13 C#9
 D9 C#9 C9 F#13 G13 D#9 D9 F#13
 D#9 D9 F#13 G13 D#9 D9 F#13 C#9

41. Omvendning, kromatisk opp- og nedadgående bevegelse

F#9 G9 G#9 G9 H13
 C13 G#9 G9 C#13
 D13 C#13 C13 F#9 G9 D#13 D13 F#9
 D#13 D13 F#9 G9 D#13 D13 F#9 C#13

42. Kromatisk ned- og oppadgående bevegelse

Chord progression for exercise 42:

- Staff 1: C9, G#13 G13, F#13 G13, C#9
- Staff 2: D9, H9 C9, G#13 G13, C#9 D9, G#13
- Staff 3: (Continuation of the chromatic movement)

43. Ters/Septim Country (Funk)

Chord progression for exercise 43:

- Staff 1: A7
- Staff 2: D7, A7
- Staff 3: E7, D7, A7, E7

44. Omvending

Musical notation for exercise 44, "Omvending". The piece is in treble clef, 4/4 time, and the key signature has two sharps (F# and C#). The notation consists of three staves of chords, each with a slur over it. The first staff (measures 1-4) is labeled "A7" and contains a whole note chord with fingerings 3 and 4 indicated. The second staff (measures 5-8) is labeled "D7" for measures 5-6 and "A7" for measures 7-8. The third staff (measures 9-12) is labeled "E7" for measures 9-10, "D7" for measure 11, "A7" for measure 12, and "E7" for the final measure.

45. Rytmisk motiv - Ters/Septim

Musical notation for exercise 45, "Rytmisk motiv - Ters/Septim". The piece is in treble clef, 4/4 time, and the key signature has two sharps (F# and C#). The notation consists of four staves of a rhythmic motif. The first staff (measures 1-4) is labeled "A7" and contains a rhythmic motif with fingerings 3 and 4 indicated. The second staff (measures 5-8) is labeled "D7". The third staff (measures 9-12) is labeled "A7" for measures 9-10 and "E7" for measures 11-12. The fourth staff (measures 13-16) is labeled "D7" for measures 13-14, "A7" for measure 15, and "E7" for measure 16.

46. Omvending

A7 ③
④

A7

A7

4

A7

D7

D7

7

A7

A7

E7

10

D7

A7

E7

47. Alternativ komppfigur

A7

A7

A7

①
②
③

A7

D7

D7

4

A7

A7

E7

7

D7

A7

E7

10

48. Omvending 1

Musical score for exercise 48, Omvending 1, in A major, 4/4 time. The score consists of four staves of music. The first staff (measures 1-3) features a treble clef, a key signature of one sharp (F#), and a 4/4 time signature. It contains three measures of music, each with a chord labeled 'A' above it. The rhythm is a steady eighth-note pattern with accents (>) on every note. Fingering numbers 1, 2, and 3 are shown in circles above the first three notes of the first measure. Below the staff, a rhythmic pattern is indicated: a square, a vertical line, a square, and a vertical line, with a 'V' below the first and third squares. The second staff (measures 4-6) starts at measure 4 and contains three measures with chords 'A', 'D9', and 'D9'. The third staff (measures 7-9) starts at measure 7 and contains three measures with chords 'A', 'A', and 'E9'. The fourth staff (measures 10-12) starts at measure 10 and contains three measures with chords 'E9', 'A', and 'E9'. All notes have accents (>).

49. Omvending 2

Musical score for exercise 49, Omvending 2, in A major, 4/4 time. The score consists of four staves of music. The first staff (measures 1-3) features a treble clef, a key signature of one sharp (F#), and a 4/4 time signature. It contains three measures of music, each with a chord labeled 'A7' above it. The rhythm is a steady eighth-note pattern with accents (>) on every note. Fingering numbers 1, 2, and 3 are shown in circles above the first three notes of the first measure. Below the staff, a rhythmic pattern is indicated: a square, a vertical line, a square, and a vertical line, with a 'V' below the first and third squares. The second staff (measures 4-6) starts at measure 4 and contains three measures with chords 'A7', 'D7', and 'D7'. The third staff (measures 7-9) starts at measure 7 and contains three measures with chords 'A7', 'A7', and 'E7'. The fourth staff (measures 10-12) starts at measure 10 and contains three measures with chords 'D7', 'A7', and 'E7'. All notes have accents (>).

50. Omvending 3

52. 8-Beat basisfigur 1

53. Basisfigur 2

Musical notation for Basisfigur 2, measures 1-12. The piece is in 4/4 time with a key signature of three sharps (F#, C#, G#). The notation consists of three staves. The first staff (measures 1-4) is marked with an E7 chord and includes a rhythmic diagram above the staff: a quarter note followed by three eighth notes. The second staff (measures 5-8) is marked with A7 and E7 chords. The third staff (measures 9-12) is marked with H7, A7, E7, and H7 chords. Fingerings are indicated by circled numbers 3, 4, and 5. Accents are shown as downward-pointing chevrons (<v>) under the notes.

54. Basisfigur 3

Musical notation for Basisfigur 3, measures 1-12. The piece is in 4/4 time with a key signature of three sharps (F#, C#, G#). The notation consists of three staves. The first staff (measures 1-4) is marked with an E7 chord and includes a rhythmic diagram above the staff: a quarter note followed by three eighth notes. The second staff (measures 5-8) is marked with A7 and E7 chords. The third staff (measures 9-12) is marked with H7, A7, E7, and H7 chords. Fingerings are indicated by circled numbers 3, 4, and 5. Accents are shown as downward-pointing chevrons (<v>) under the notes.

55. Basisfigur 4

Musical notation for Basisfigur 4, measures 1-12. The piece is in 4/4 time with a key signature of three sharps (F#, C#, G#). The notation consists of three staves. The first staff (measures 1-4) is marked with an E7 chord and includes a rhythmic diagram above the staff: a quarter note followed by three eighth notes. The second staff (measures 5-8) is marked with A7 and E7 chords. The third staff (measures 9-12) is marked with H7, A7, E7, and H7 chords. Fingerings are indicated by circled numbers 3, 4, and 5. Accents are shown as downward-pointing chevrons (<v>) under the notes.

56. Basstonerekke, variant 1

Musical score for '56. Basstonerekke, variant 1' in 4/4 time, key of E major. The score consists of three staves. The first staff starts with a treble clef and a key signature of three sharps (F#, C#, G#). It contains a sequence of eighth notes with accents, starting with a chord diagram for E7. The second staff begins at measure 5 and contains a sequence of eighth notes with accents, with a chord diagram for A7 at the start and E7 later. The third staff begins at measure 9 and contains a sequence of eighth notes with accents, with chord diagrams for H7, A7, E7, and H7.

57. Basstonerekke, variant 2

Musical score for '57. Basstonerekke, variant 2' in 4/4 time, key of E major. The score consists of three staves. The first staff starts with a treble clef and a key signature of three sharps (F#, C#, G#). It contains a sequence of eighth notes with accents, starting with a chord diagram for E7. The second staff begins at measure 5 and contains a sequence of eighth notes with accents, with a chord diagram for A7 at the start and E7 later. The third staff begins at measure 9 and contains a sequence of eighth notes with accents, with chord diagrams for H7, A7, E7, and H7.

58. Shuffle basstonerekke, variant 1

Musical score for '58. Shuffle basstonerekke, variant 1' in 4/4 time, key of E major. The score consists of three staves. The first staff starts with a treble clef and a key signature of three sharps (F#, C#, G#). It contains a sequence of eighth notes with accents, starting with a chord diagram for E7 and a 'V' symbol. The second staff begins at measure 5 and contains a sequence of eighth notes with accents, with a chord diagram for A7 at the start and E7 later. The third staff begins at measure 9 and contains a sequence of eighth notes with accents, with chord diagrams for H7, A7, E7, and H7.

59. Shuffle basstonerekke, variant 2

Exercise 59 is a shuffle bass line in 4/4 time, key of E major (three sharps). It consists of three staves of music. The first staff starts with an E7 chord and contains two measures of eighth-note patterns. The second staff starts at measure 5 with an A7 chord and ends at measure 8 with an E7 chord. The third staff starts at measure 9 with an H7 chord and contains four measures of eighth-note patterns, ending with an H7 chord. The notation includes various rhythmic markings such as accents and slurs.

60. 1, 2, 3 streng

Exercise 60 is a 1, 2, 3 strings exercise in 4/4 time, key of E major. It consists of three staves of music. The first staff starts with an E6 chord and contains eight measures of chords with rhythmic markings. The second staff starts at measure 5 with an A7 chord and ends at measure 8 with an E6 chord. The third staff starts at measure 9 with an H7 chord and contains four measures of chords with rhythmic markings. The notation includes various rhythmic markings such as accents and slurs.

61. Shuffle 1, 2, 3 streng

Exercise 61 is a shuffle 1, 2, 3 strings exercise in 4/4 time, key of E major. It consists of three staves of music. The first staff starts with an E6 chord and contains eight measures of chords with rhythmic markings. The second staff starts at measure 5 with an A7 chord and ends at measure 8 with an E6 chord. The third staff starts at measure 9 with an H7 chord and contains four measures of chords with rhythmic markings. The notation includes various rhythmic markings such as accents and slurs.

62. 8-Beat bassfigur

63. Shuffle bassfigur

64. Bassfigur med kromatiske gjennomgangstoner

65. Shuffle bassfigur med kromatiske gjennomgangstoner

Chords: E7, A7, H7, A7, E7, H7

66. Ters/septim – JazzBluesskjema

Chords: Ab7, Db7, Ab7, Db7, Ab7, Bbm7, Cm7, F7, Bbm7, Eb7, Ab7, F7, Bbm7, Eb7

67. 2, 3, 4 streng - JazzBluesskjema

② Ab13 Db9 Ab13

5 Db9 Ab13 Bbm7 Cm7 F9

9 Bbm7 Eb9 Ab13 F9 Bbm7 Eb9

68. 1, 2, 3, 4 streng - JazzBluesskjema

① Ab13 Db9 Ab13

5 Db9 Ab13 Bbm7 Cm7 F9

9 Bbm7 Eb9 Ab13 F9 Bbm7 Eb9

69. 1, 2, 3, 4 streng – utvidet jazzBluesskjema

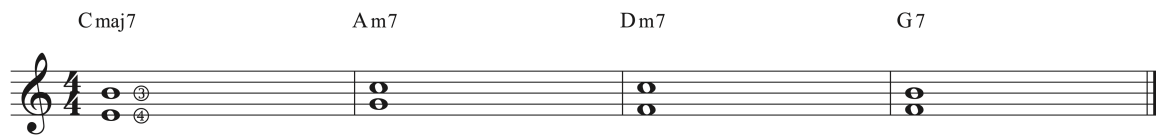
① Ab13 Db9 D dim Ab13

5 Db9 D dim Ab13 Bbm7 Cm7 F9

9 Bbm7 Eb7b9 Ab13 F9 Bbm7 Eb7b9

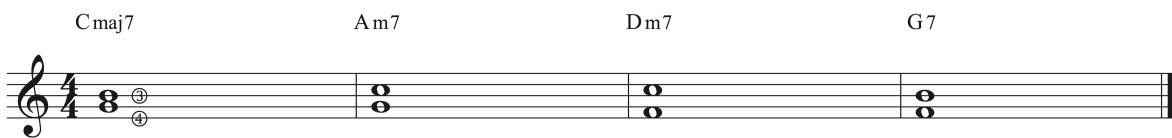
70. 3, 4 streng – II V I skjema

Cmaj7 Am7 Dm7 G7



71. Voicingvariant

Cmaj7 Am7 Dm7 G7



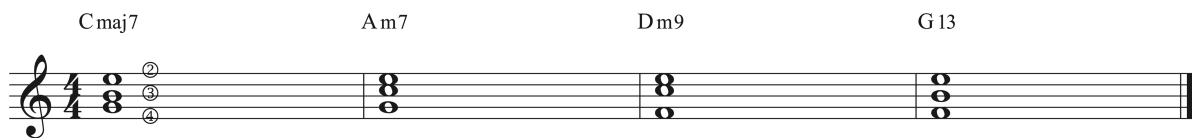
72. Omvending

Cmaj7 Am7 Dm7 G7



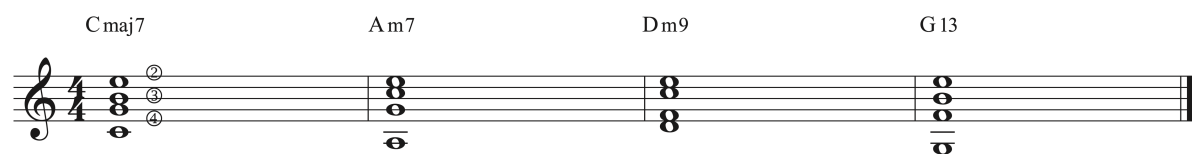
73. 2, 3, 4 streng

Cmaj7 Am7 Dm9 G13



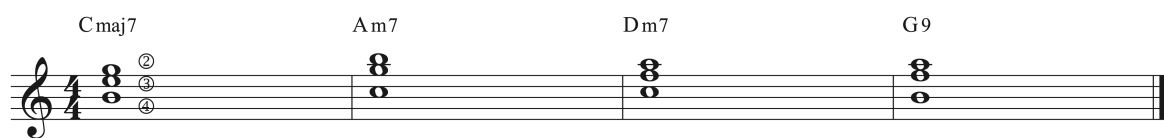
74. med grunnbass

Cmaj7 Am7 Dm9 G13



75. Omvending

Cmaj7 Am7 Dm7 G9



76. 1, 2, 3, 4 streng

Cmaj7 Am7 Dm11 G13

77. Omvending

Cmaj7 Am11 Dm11 G9

78. 3, 4 streng: grunnstilling og omvending

Cmaj7 Am7 Dm7 G7 Cmaj7 Am7 Dm7 G7

79. 2, 3, 4 streng: grunnstilling og omvending

Cmaj7 Am7 Dm9 G13 Cmaj7 Am9 Dm7 G9

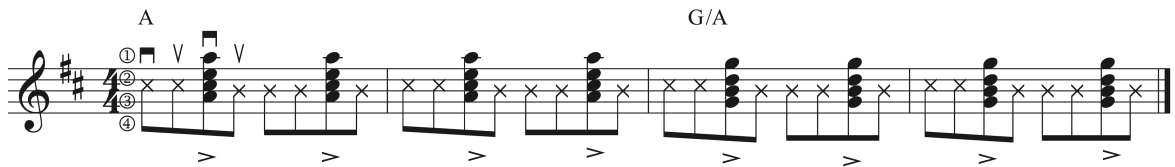
80. 1, 2, 3, 4 streng: grunnstilling og omvending

Cmaj7 Am7 Dm11 G13 Cmaj7 Am11 Dm7 G9

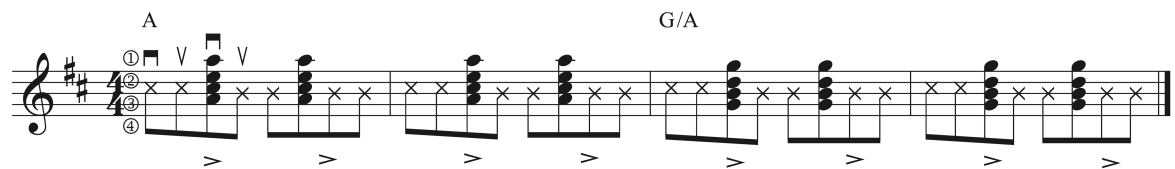
81. Stax/Motown bassriff



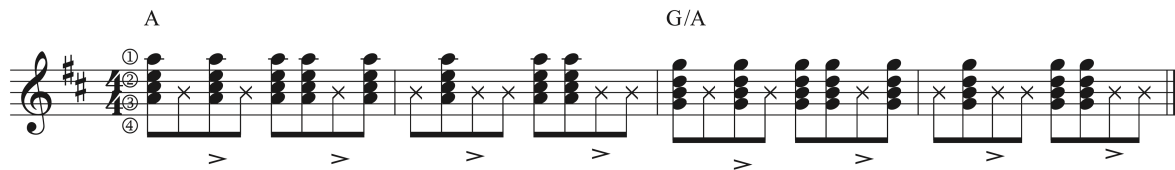
82. Etterslag



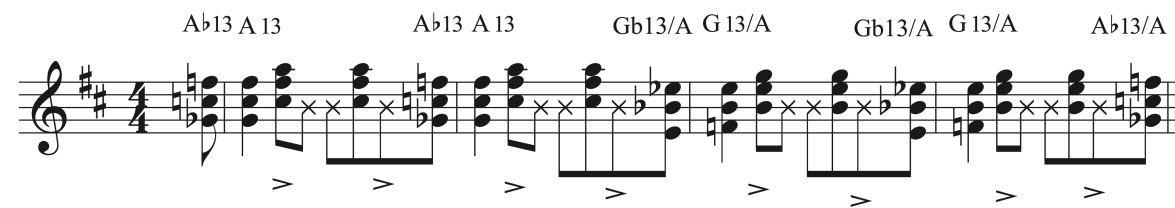
83. Variasjon etterslag



84. Kompfigur 2



85. Kompfigur 3



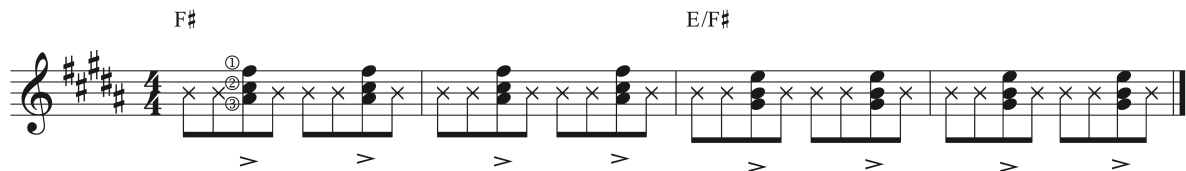
86. Kompfigur 4



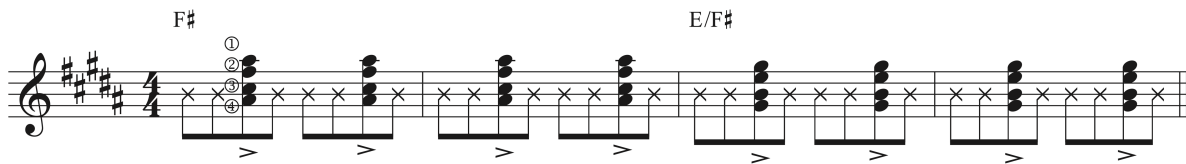
87. Shuffle Stax/Motown bassriff



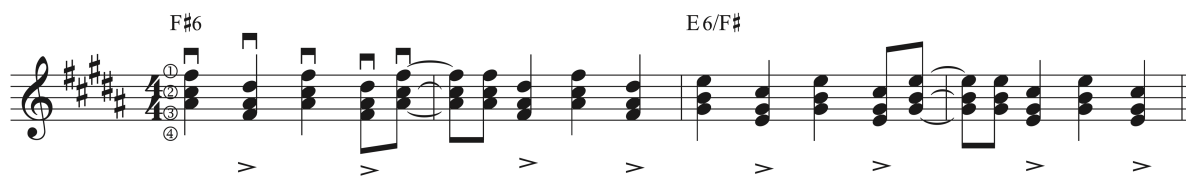
88. Shuffle etterslag



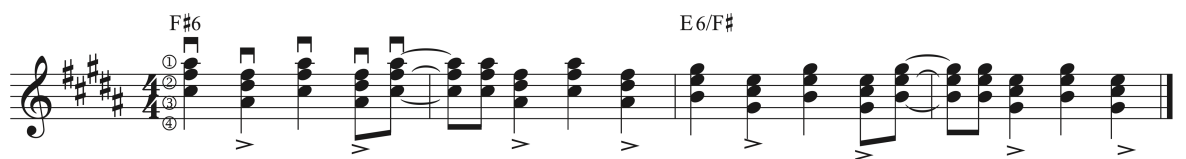
89. Shuffle etterslag, omvending



90. Alternativ kompfigur



91. Alternativ kompfigur, omvending



92. 16- Beat funk 1

93. Funk 2

94. Funk 3

95. Funk 4

96. Variasjon

97. Funk 5

98. Funk 6 – single note picking

E9

99. Variasjon

E9

100. Funk 7

E9

101. Funk 8

D#9/E E9

102. Funk 9

E9

103. Funk 10 - oktaver

E9

Musical notation for Funk 10 - oktaver. It features a treble clef, a key signature of two sharps (F# and C#), and a 4/4 time signature. The piece consists of two staves. The first staff contains a sequence of chords, each marked with a 'V' and a 'V' above it, and a circled number 1 above the first chord. The second staff contains a sequence of chords, each marked with a 'V' and a 'V' above it, and a circled number 2 above the first chord. The notation includes various rhythmic values and accents.

104. Funk 11

C9

Musical notation for Funk 11. It features a treble clef, a key signature of one flat (Bb), and a 4/4 time signature. The piece consists of two staves. The first staff contains a sequence of chords, each marked with a 'V' and a 'V' above it, and a circled number 1 above the first chord. The second staff contains a sequence of chords, each marked with a 'V' and a 'V' above it, and a circled number 2 above the first chord. The notation includes various rhythmic values and accents.

105. Funk 12

C9

D9/C

Musical notation for Funk 12. It features a treble clef, a key signature of one flat (Bb), and a 4/4 time signature. The piece consists of two staves. The first staff contains a sequence of chords, each marked with a 'V' and a 'V' above it, and a circled number 1 above the first chord. The second staff contains a sequence of chords, each marked with a 'V' and a 'V' above it, and a circled number 2 above the first chord. The notation includes various rhythmic values and accents.

106. Funk 13

G9

Musical notation for Funk 13. It features a treble clef, a key signature of one sharp (F#), and a 4/4 time signature. The piece consists of two staves. The first staff contains a sequence of chords, each marked with a 'V' and a 'V' above it, and a circled number 1 above the first chord. The second staff contains a sequence of chords, each marked with a 'V' and a 'V' above it, and a circled number 2 above the first chord. The notation includes various rhythmic values and accents.

107. Rock med Beguinerytmikk – variant 1

Musical notation for exercise 107, Rock med Beguinerytmikk – variant 1. The piece is in 4/4 time and features a guitar-like rhythm with chords and eighth notes. The chords are C, Am, F, and G. The notation includes accents (>) and slurs over the eighth notes.

108. Omvending

Musical notation for exercise 108, Omvending. The piece is in 4/4 time and features a guitar-like rhythm with chords and eighth notes. The chords are C, Am, F, and G. The notation includes accents (>) and slurs over the eighth notes.

109. Rock med Beguinerytmikk – variant 2

Musical notation for exercise 109, Rock med Beguinerytmikk – variant 2. The piece is in 4/4 time and features a guitar-like rhythm with chords and eighth notes. The chords are C, Am, F, and G. The notation includes accents (>) and slurs over the eighth notes, and triplets (3) are indicated.

110. Omvending

Musical notation for exercise 110, Omvending. The piece is in 4/4 time and features a guitar-like rhythm with chords and eighth notes. The chords are C, Am, F, and G. The notation includes accents (>) and slurs over the eighth notes, and triplets (3) are indicated.

111. Shuffle – riffmotiv: 3, 4 streng

Musical notation for exercise 111, Shuffle – riffmotiv: 3, 4 streng. The piece is in 4/4 time and features a shuffle rhythm with chords and eighth notes. The chords are G7 and C7. The notation includes accents (>) and slurs over the eighth notes, and a circled '3' is present.

116. Variasjon

117. med annen voicing på C7

118. Variant 3

119. Med annen voicing på C7

120. Shuffle etterslag

G6

C9

5

121. Shuffle trioletterslag

G6

C9

5

122. Samba 2,3,4 streng: C – Bb/C

C maj7

Bb/C

3

123. Samba 2,3,4 streng: C69 – Bb/C

C⁶₉

Bb/C

3

124. Samba 1, 2, 3 streng: C – Bb/C

Cmaj7

Bb6/C

3

125. Samba 1, 2, 3 streng: C69 – Bb/C

C⁶₉

Bb6/C

3

126. Samba 1, 2, 3, 4 streng: C – Bb/C

Cmaj7

Bb6/C

3

127. Samba 1, 2, 3 streng: C69 – Bb/C

C⁶₉

Bb6/C

3

128. Omvendning Samba 1, 2, 3 streng: C – Bb/C

Cmaj7

Bb6/C

129. Samba med Partido altoaksenter på 1, 2, 3 streng: C- Bb/C

Cmaj7

Bb6/C

130. Samba med Partido altoaksenter på 2, 3, 4 streng: C- Bb/C

Cmaj7

Bb6/C

131. Samba med Partido altoaksenter på 2, 3, 4/1, 2, 3 streng: C- Bb/C

Cmaj7

Bb6/C

132. Samba med Partido altoaksenter på 1, 2, 3/2, 3, 4 streng: C- Bb/C

Cmaj7

Bb6/C