

**Title**

Annual volume and distribution of physical training in Norwegian female cross-country skiers and biathletes: a comparison between sports, competition levels, and age categories - the FENDURA project.

**Submission Type**

Original investigation

**Authors**

John O. Osborne<sup>1</sup>, Guro S. Solli<sup>1,2</sup>, Tina P. Engseth<sup>1</sup>, Boye Welde<sup>1</sup>, Bente Morseth<sup>1</sup>, Dionne A. Noordhof<sup>3</sup>, Øyvind Sandbakk<sup>1,3</sup>, Erik P. Andersson<sup>1,4</sup>

**Affiliations**

<sup>1</sup> School of Sport Sciences, UiT The Arctic University of Norway, Tromsø, Norway.

<sup>2</sup> Department of Sports Science and Physical Education, Nord University, Bodø, Norway.

<sup>3</sup> Centre for Elite Sports Research, Department of Neuromedicine and Movement Science, Norwegian University of Science and Technology, Trondheim, Norway.

<sup>4</sup> Department of Health Sciences, Swedish Winter Sports Research Centre, Mid Sweden University, Östersund, Sweden.

**Corresponding Author**

Dr. John O. Osborne

School of Sport Sciences, UiT The Arctic University of Norway, Tromsø, Norway.

Address: Medisin- og helsebygget, UiT, Tromsø, Norway, 9037.

ORCID ID: 0000-0001-8681-8521

E-mail: [john.owen.osborne@uit.no](mailto:john.owen.osborne@uit.no)

1 **Running head.**

2 Annual training of female XC skiers and biathletes

3

4 **Manuscript has been published online as Ahead of Print:**

5 Accepted author manuscript version reprinted, by permission, from International Journal of

6 Sports Physiology and Performance, 2023, <https://doi.org/10.1123/ijsp.2023-0067>. © Human

7 Kinetics, Inc.

## 8 **Abstract**

### 9 *Purpose*

10 To describe and compare the annual physical training characteristics between Norwegian  
11 female cross-country (XC) skiers and biathletes across competition levels and age categories.

### 12 *Methods*

13 Daily training sessions for one year were recorded for 45 XC skiers and 26 biathletes,  
14 comprising international/national-team [inter(national)] and non-national/regional-team  
15 members (non-national) of both junior and senior age. Endurance, strength, flexibility, speed,  
16 and power training sessions were recorded. Data included exercise modality, intensity, and  
17 duration. Data were analysed using linear mixed-effects models.

### 18 *Results*

19 The total annual physical training volume consisted of ~90% endurance training for both  
20 groups, although XC skiers had significantly higher total volumes (~10%;  $p=.003$ ;  $d=0.78$ )  
21 than biathletes. Senior XC skiers performed more training hours of skiing and/or roller skiing  
22 compared to biathletes over the season. However, biathletes compensated for this lower volume  
23 by more skating, and higher proportion of endurance training as skiing ( $81\pm17\%$ ), compared  
24 to XC skiers ( $68\pm16\%$ ;  $p<.001$ ;  $d=0.94$ ). Overall, (inter)national level athletes completed a  
25 higher annual training volume than non-national level athletes ( $740\pm90$  h vs  $649\pm95$  h;  $p=.004$   
26  $d=0.81$ ). Although juniors reported less endurance volume than seniors, they maintained a  
27 relatively stable level of endurance training across the preparatory and competition period,  
28 unlike senior athletes.

### 29 *Conclusion*

30 The higher annual physical training volume by XC skiers compared to biathletes is likely  
31 caused by the different demands of the two sports; XC skiing necessitates training for two

32 skiing styles, while biathlon requires additional shooting practice. However, biathletes  
33 compensate with a higher proportion of ski training, particularly in the skating technique.

34

35 **Keywords**

36 skiing, endurance training, strength training, intensity distribution, training periodization

37

38

## 39 **Introduction**

40 Cross-country (XC) skiing and biathlon are two demanding winter endurance sports. Both  
41 necessitate a highly developed aerobic energy delivery capacity and skiing efficiency,  
42 combined with anaerobic capacity, to cross varying terrain with the simultaneous use of upper-  
43 and lower-body musculature.<sup>1,2</sup> The primary differences between the two sports are the smaller  
44 range of competition times and formats, the exclusive use of the skating technique and the  
45 inclusion of shooting in biathlon, with the added requirement of rifle carriage.<sup>3</sup>

46

47 The physiological demands of these sports are met by high endurance training volumes of 700–  
48 950 h·year<sup>-1</sup> for world-class XC skiers and biathletes, with a typical training intensity  
49 distribution of 88–91% low-intensity training (LIT), 3–7% moderate intensity training (MIT),  
50 and 5–8% high intensity training (HIT).<sup>2-4</sup> The inclusion of shooting practice within the  
51 training program of biathletes appears to reduce endurance training volume by ~19–30% when  
52 compared to world-class XC skiers.<sup>5-7</sup> Studies about the periodisation pattern in elite XC skiers  
53 and biathletes have reported a high volume of LIT during the preparatory phases, followed by  
54 a reduction in LIT volume, an increase in HIT volume, and a greater proportion of ski training  
55 prior to, and during, the competition phase.<sup>2,8,9</sup> However, despite the popularity of these winter  
56 endurance sports, only a handful of studies have specifically reported the longer-term (i.e.,  
57 annual) training characteristics of female XC skiers and/or biathletes. Apart from a recent study  
58 by Myakinchenko et al.<sup>6</sup>, the majority of previous research has examined small samples (i.e.,  
59  $n \leq 12$ )<sup>2,5,10,11</sup> or case studies.<sup>9</sup> As such, there is a clear need for additional research describing  
60 the annual training characteristics of female XC skiers and biathletes, using a larger and more  
61 robust sample. Similarly, previous studies including female biathletes have focused exclusively  
62 on elite athletes,<sup>5,6</sup> and thus additional research is required to compare the annual training  
63 characteristics between biathletes of different competition levels.

64

65 Further, there remains a dearth of data regarding training similarities or differences between  
66 age categories within these sports, i.e., junior compared to senior female athletes. Junior  
67 athletes are likely to have a lower annual training volume and different training intensity  
68 distribution compared to seniors, due to the requirement of gradual training progression for  
69 optimal development, as well as their delayed competition schedule and requirement of school  
70 attendance. Karlsson et al.<sup>10</sup> previously described the difference in training between junior and  
71 senior level XC skiers (e.g., increased endurance training volume from ~470 h·year<sup>-1</sup> to ~730  
72 h·year<sup>-1</sup>, primarily as skiing LIT). However, this was a longitudinal cohort study and thus did  
73 not compare different age categories at the same time point. Likewise, there appears to be  
74 limited scientific evidence describing the training distribution of junior and senior female  
75 biathletes. Therefore, additional comparative research is needed to better understand the  
76 differences in training characteristics in female cross-country skiers and biathletes competing  
77 at different competition levels and in different age categories.

78

79 This study aimed to describe and compare the annual training characteristics (i.e., volume,  
80 modality, and intensity distribution) of Norwegian female XC skiers and biathletes, and  
81 compare between competition levels and age categories.

82

### 83 **Methods**

84 This study was part of The Female Endurance Athlete (FENDURA) project. The overall  
85 objective of the FENDURA project is to conduct novel female-specific research and contribute  
86 to developing and improving the exercise performance, training and health of female athletes.<sup>12</sup>

87

88 *Participants*

89 A group of 71 highly trained Norwegian female endurance athletes, consisting of XC skiers (n  
90 = 45) and biathletes (n = 26), were included in this study. All athletes were competing at either  
91 a Norwegian regional/non-national level (i.e., ‘non-national’; Tier 3) or at a  
92 national/international level (i.e., ‘(inter)national’; Tier 4/5).<sup>13</sup> Athletes were classified into their  
93 respective performance tiers using the 6-tier guidelines by McKay et al.<sup>13</sup>, using their current  
94 competition level (e.g., member of the national team, previous year’s results) and agreement  
95 between two investigators with specific expert-insights (GSS and TPE). Athletes were  
96 considered either junior or senior, depending on their athletic age category recorded at the start  
97 of the season. Information regarding hormonal contraceptive use (or lack thereof) was also  
98 collected for cohort description and to permit comparison by future studies. However no further  
99 analysis of this data was undertaken and is only displayed for informative purposes. See Table  
100 1 for group anthropometric, demographic, and hormonal contraceptive use information. All  
101 participants were fully informed about all study procedures and requirements before they  
102 agreed to provide written informed consent. This study was approved by the Norwegian Social  
103 Science Data Services (Project Number: 409326) and assessed by the Norwegian Regional  
104 Committees for Medical and Health Research Ethics (Project ID: 135555).

105 **Table 1. Anthropometric characteristics of 71 female XC skiers and biathletes, split by sport, competition level and age category.**

Variable	All Athletes N = 71	Sport		Competition Level		Age Category	
		XC Skiers (n = 45)	Biathletes (n = 26)	Non-National (n = 50)	(Inter)national (n = 21)	Senior (n = 36)	Junior (n = 35)
Age (years)	20.9 ± 2.7	21.1 ± 3.0	20.5 ± 2.1	20.2 ± 2.3	22.5 ± 2.9	23.0 ± 2.1	18.7 ± 0.7
Body mass (kg)	62.2 ± 4.8	61.6 ± 4.7	63.2 ± 4.9	61.8 ± 4.7	63.0 ± 5.1	61.5 ± 4.6	62.9 ± 5.1
Stature (cm)	169 ± 6	169 ± 5	170 ± 7	169 ± 6	169 ± 5	168 ± 6	170 ± 6
(Inter)national (n)	21	14	7	-	21	15	6
Non-National (n)	50	31	19	50	-	21	29
Senior (n)	36	22	14	21	15	36	-
Junior (n)	35	23	12	29	6	-	35
<b>Hormonal contraceptive use</b>							
Combined OCP (n)	17	11	6	11	6	9	8
Progestin-only OCP (n)	6	2	4	5	1	4	2
Implant (n)	9	7	2	8	1	4	5
IUS (n)	14	11	3	8	6	11	3
No hormonal contraception (n)	25	14	11	18	7	8	17

106 Data presented as mean ± standard deviation. Note: XC = cross country; OCP = oral contraceptive pill; IUS = intrauterine system.



107 *Design*

108 A prospective cohort study design was employed, with athletes systematically recording all  
109 their day-to-day training sessions across the annual season of 2020/2021, from 1<sup>st</sup> May 2020  
110 to 30<sup>th</sup> April 2021. This data collection period coincided with the worldwide outbreak of the  
111 COVID-19 virus, and as such, may not be representative of a normal athletic training year.

112

113 *Training Data*

114 Daily training data were recorded in an electronic training diary, either using software  
115 developed by the Norwegian Top Sport Centre (Olympiatoppen) or Bestr (Bestr, Oslo,  
116 Norway). All recorded parameters were identical, regardless of the software developer.  
117 Athletes reported session duration, training form (i.e., endurance, strength, flexibility, speed  
118 and power), modality (i.e., on-snow or roller skiing [classic or skating], running, cycling, other)  
119 and the perceived training intensity for the session using the Borg CR10 scale, ranging from 1  
120 “extremely easy” to 10 “maximum intensity”.<sup>14</sup> Data on biathlete shooting training (number of  
121 shots fired or time spent shooting) were not included in the original data collection of the  
122 FENDURA project, and thus were not included in the analysis. Competition and benchmark  
123 testing sessions were also excluded from the data analysis due to the unusual situation of the  
124 COVID-19 pandemic, which restricted the possibility for many of the athletes to undertake  
125 laboratory-based testing and saw the cancelation of many competitive events. Total training  
126 time was considered the cumulative time of endurance, speed, power, strength, and flexibility  
127 training. Endurance training intensity was initially categorised using a 5-zone model, with  
128 duration of training in each zone recorded in minutes and then converted to a standardised 3-  
129 zone model, as previously described for similar data:<sup>2,9,15-17</sup> LIT (zones 1–2; below the first  
130 lactate threshold), MIT (zone 3; between the first and second lactate threshold) and HIT (zones  
131 4–5; above the second lactate threshold). Duration of time spent in all modalities other than

132 endurance training, i.e., speed, power, strength, and/or flexibility, were recorded to the nearest  
133 minute.

134

### 135 *Annual Training Phase Definition*

136 For data systematization and analysis, the annual training season was split into five distinct  
137 training phases: general preparatory 1 (GP1: 1<sup>st</sup> May–31<sup>st</sup> July), general preparatory 2 (GP2:  
138 1<sup>st</sup> August–30<sup>th</sup> October), specific preparatory phase (SP: 1<sup>st</sup> November–31<sup>st</sup> December),  
139 competitive phase (CP: 1<sup>st</sup> January–31<sup>st</sup> March), and transition/recovery phase (REC: 1<sup>st</sup> April–  
140 30<sup>th</sup> April), as previously described.<sup>9</sup>

141

### 142 *Data analysis*

143 All analyses were undertaken using R (R Core Team 2021). Data were modelled using linear  
144 mixed effects (package: *lme4*)<sup>18</sup> with a random intercept for each athlete. All models included  
145 training phase (levels: GP1; GP2; SP; CP; REC), sport (levels: XC; biathlon), level of  
146 competition [levels: (inter)national; non-national] and age category (levels: junior; senior) as  
147 fixed factors, with interactions included between all fixed factors. Fit and convergence were  
148 checked with the DHARMA package.<sup>19</sup> Post-hoc testing, effect sizes (Cohen's *d*), and marginal  
149 means were produced using the *emmeans* package,<sup>20</sup> with Tukey correction for multiple  
150 comparisons. Statistical significance was assumed to  $\alpha = 5\%$ . Data are provided as means and  
151 variance reported as standard deviations ( $\pm$  SD) or 95% confidence intervals [95% CI], unless  
152 otherwise noted.

153

## 154 **Results**

### 155 *Annual training time and periodisation*

156 Total annual training time for all XC skiers and biathletes was  $676 \pm 102$  h·year<sup>-1</sup> (range: 425  
157 – 902 h·year<sup>-1</sup>) distributed across  $434 \pm 58$  training sessions. XC skiers completed 10% more  
158 total annual training time ( $699 \pm 105$  h·year<sup>-1</sup>) compared to biathletes ( $636 \pm 83$  h·year<sup>-1</sup>;  $p =$   
159  $.003$ ;  $d = 0.78$ ). Differences were also found between competition levels ((inter)national:  $740$   
160  $\pm 90$  h·year<sup>-1</sup>; non-national:  $649 \pm 95$  h·year<sup>-1</sup>;  $p = .004$ ;  $d = 0.81$ ) and for age categories (senior:  
161  $719 \pm 95$  h·year<sup>-1</sup>; junior:  $631 \pm 90$  h·year<sup>-1</sup>;  $p < .001$ ;  $d = 0.91$ ), independent of sport. No  
162 interaction effects were found between sport, competition level or age category. See Table 2  
163 for details.

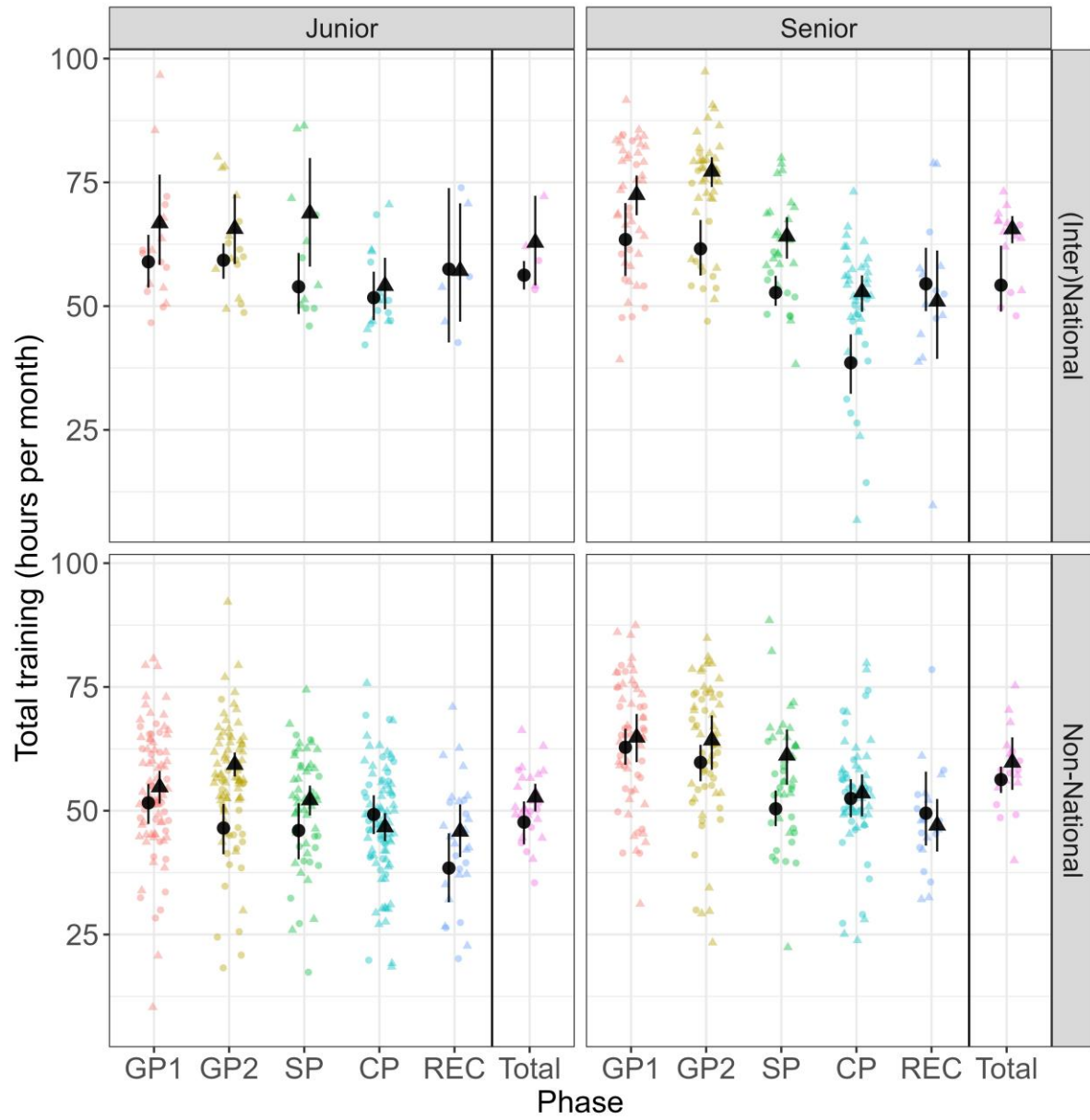
164  
165 Endurance training accounted for  $89.2 \pm 4.0\%$  of total training time for all athletes, with an  
166 additional  $7.0 \pm 2.6\%$  used for strength training, and the remainder ( $3.8 \pm 2.2\%$ ) as flexibility,  
167 speed, and power training. Split by sport, endurance training comprised  $90.9 \pm 3.4\%$  of total  
168 training time for biathletes, and  $88.3 \pm 4.0\%$  for XC skiers. On average, most endurance  
169 training was completed as LIT ( $90.5 \pm 2.6\%$ ;  $546 \pm 90$  h·year<sup>-1</sup>), with approximately equal  
170 proportions of MIT ( $4.5 \pm 1.8\%$ ;  $28 \pm 12$  h·year<sup>-1</sup>) and HIT ( $4.9 \pm 1.8\%$ ;  $29 \pm 10$  h·year<sup>-1</sup>). See  
171 Figure 1 for the total monthly training time per training phase, for sport, competition level and  
172 age category. No significant differences were found between sports for either the total annual  
173 MIT and HIT training time or the number of sessions for MIT or HIT ( $p = .160$  to  $.476$ ). XC  
174 skiers completed higher monthly total training volumes during GP1, GP2 and SP ( $p = .001$  to  
175  $.027$ ;  $d = 0.48$  to  $0.94$ ) than biathletes. XC skiers also reported significantly more annual  
176 strength training than biathletes ( $p = .011$ ;  $d = 0.78$ ; Table 2), and specifically, senior XC  
177 athletes had higher monthly strength training during the preparatory phases ( $p = .001$  to  $.005$ ;  $d$   
178  $= 0.51$  to  $0.75$ ; Figure 2) when compared to senior biathletes.

179 **Table 2. Annual training time across the 2020/21 annual season for female XC skiers and biathletes.**

	XC				Biathlon			
	Junior	Senior	Non-National	(Inter)national	Junior	Senior	Non-National	(Inter)national
Annual training (h·year <sup>-1</sup> ; *, \$, #)	648 ± 89	752 ± 96	662 ± 71	780 ± 99	598 ± 84	668 ± 69	627 ± 74	661 ± 86
Endurance (h·year <sup>-1</sup> ; *, \$, #; % total: *)	566 ± 79; 87.3 ± 3.1	672 ± 92; 89.3 ± 3.1	583 ± 94; 87.9 ± 4.3	695 ± 66; 89.2 ± 3.4	537 ± 73; 90.0 ± 2.9	612 ± 60; 91.7 ± 3.8	564 ± 75; 90.1 ± 3.4	614 ± 69; 92.9 ± 2.9
Strength (h·year <sup>-1</sup> ; *, % total: \$)	53 ± 14; 8.2 ± 1.9	49 ± 22; 6.6 ± 3.2	51 ± 19; 7.8 ± 2.9	51 ± 17 \$; 6.5 ± 2.1	45 ± 15; 7.4 ± 1.9	37 ± 18; 5.4 ± 2.5	42 ± 16; 6.6 ± 2.3	37 ± 19 \$; 5.5 ± 2.8
Speed & power (h·year <sup>-1</sup> ; % total: *)	20 ± 8; 3.0 ± 1.1	22 ± 10; 2.8 ± 1.2	18 ± 8*#; 2.8 ± 1.1	26 ± 11*#; 3.2 ± 1.3	9 ± 7; 1.4 ± 1.2	9 ± 7; 1.4 ± 1.0	10 ± 7*; 1.6 ± 1.1	7 ± 6*; 1.0 ± 0.8
Mobility (h·year <sup>-1</sup> ; % total: *)	10 ± 10; 1.6 ± 1.3	10 ± 12 #; 1.3 ± 1.6	11 ± 10; 1.1 ± 1.5	9 ± 12; 1.6 ± 1.4	7 ± 9; 1.2 ± 1.6	11 ± 11 #; 1.6 ± 1.6	11 ± 12; 1.7 ± 1.7	4 ± 3; 0.6 ± 0.6

180 XC = cross country skiers. Data presented as mean ± standard deviation. Statistical difference (p < .05) in annual training between groups: \* =  
 181 sport difference; \$ = age category difference; # = competition level difference.

182



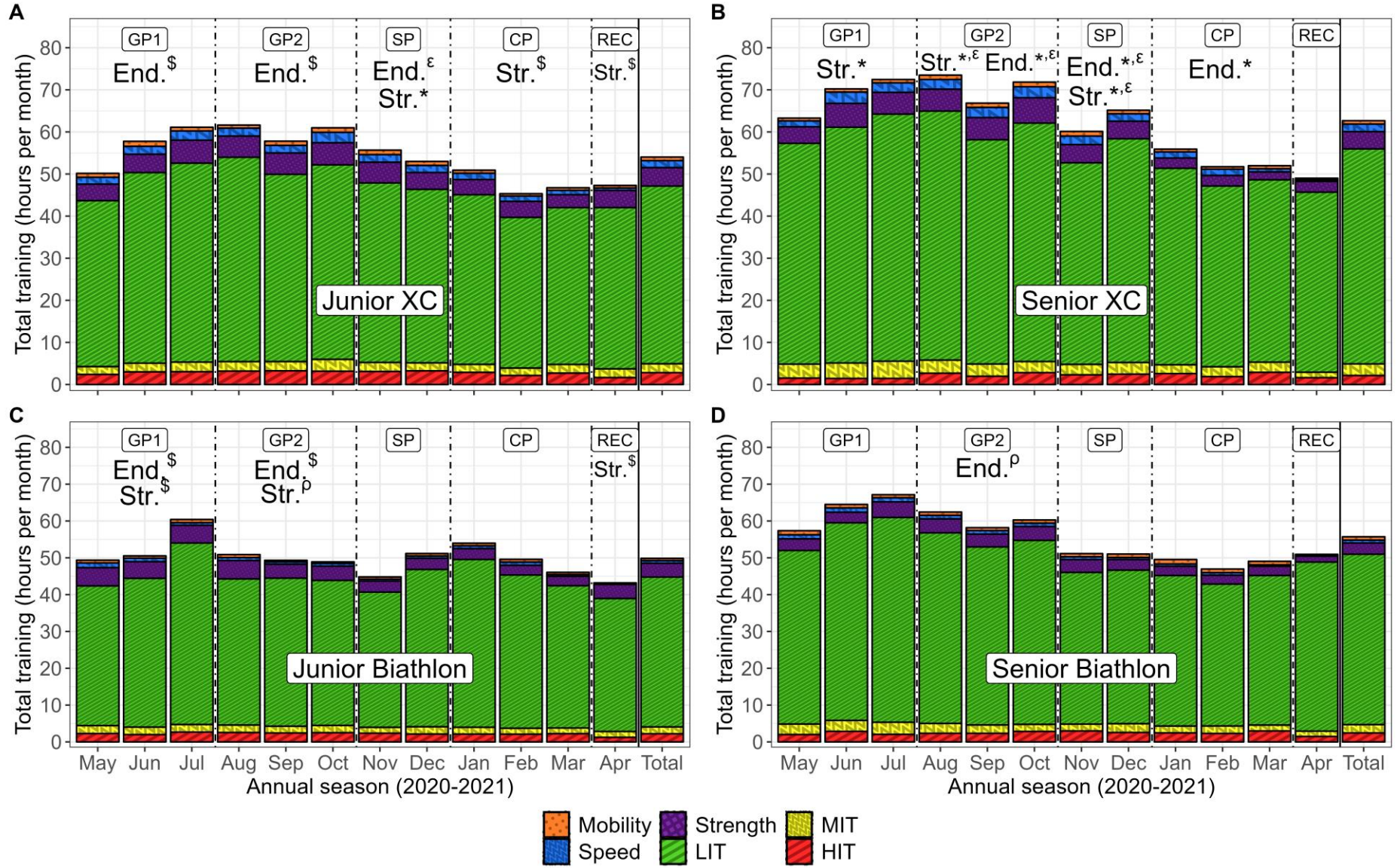
184 **Figure 1. Distribution of monthly training per phase for XC and biathlon, split by competition level and age category.** Group data for each sport are  
185 presented as total training hours per month, annually and per phase, with the mean indicated as a black shape (XC = circle; biathlon = triangle) and black vertical  
186 lines indicating 95% confidence intervals. Individual athlete data points are shown for each sport, with the shape indicating sport and point colour indicating  
187 phase (GP1 = red; GP2 = gold; SP = green; CP = aqua; REC = blue; Total = pink). Note: XC = cross country skiers; GP1 = general preparatory phase 1; GP2  
188 = general preparatory phase 2; SP = specific preparatory phase; CP = competition phase; REC = recovery phase.

189 *Annual periodization of endurance training*

190 LIT volume for (inter)national athletes was significantly higher than non-national athletes for  
191 all phases ( $p < .001$  to  $.006$ ;  $d = 0.60$  to  $0.98$ ) apart from CP. Within competition level,  
192 decreased LIT volume was reported from GP2 to SP for non-national athletes ( $p = .007$   $d =$   
193  $0.38$ ) and decreased LIT and MIT was observed from SP to CP for national athletes ( $p < .001$   
194 to  $.016$ ;  $d = 0.51$  to  $0.80$ ).

195

196 The volume of LIT was stable in GP1 and GP2, before decreasing to SP ( $p = .002$  to  $.003$ ;  $d =$   
197  $0.59$  to  $0.86$ ) for seniors of both sports and decreasing again to CP for senior XC skiers ( $p =$   
198  $.001$ ;  $d = 0.62$ ; see Figure 2). Conversely, volume remaining relatively consistent across all  
199 phases for juniors of both sports. Accordingly, the volume of LIT during GP1 and GP2 was  
200 higher in seniors of both sports, compared to juniors ( $p = .002$  to  $.011$ ;  $d = 0.81$  to  $0.89$ ), with  
201 no differences from SP onwards. The proportion of LIT was higher in seniors compared to  
202 juniors during GP2 and REC ( $p = .011$  to  $.025$ ;  $d = 0.49$  to  $0.54$ ), with no other significant  
203 differences in LIT proportion across consecutive phases for all athletes. Seniors reported a  
204 reduction in proportion and volume of MIT ( $p < .001$  to  $.012$ ;  $d = 0.51$  to  $0.64$ ) and a  
205 simultaneous increase in proportion and volume of HIT from GP1 to GP2 ( $p < .001$  to  $.003$ ;  $d$   
206  $= 0.44$  to  $0.53$ ), while juniors had no significant differences between phases, apart from REC.  
207 Senior athletes also had a higher proportion and volume of MIT ( $p < .001$  to  $.015$ ;  $d = 0.59$  to  
208  $1.09$ ) and lower volume of HIT for GP1 ( $p = .016$ ;  $d = 0.56$ ), as well as lower proportions of  
209 HIT for GP1 and GP2 ( $p = .001$  to  $.005$ ;  $d = 0.66$  to  $0.76$ ), when compared to juniors.





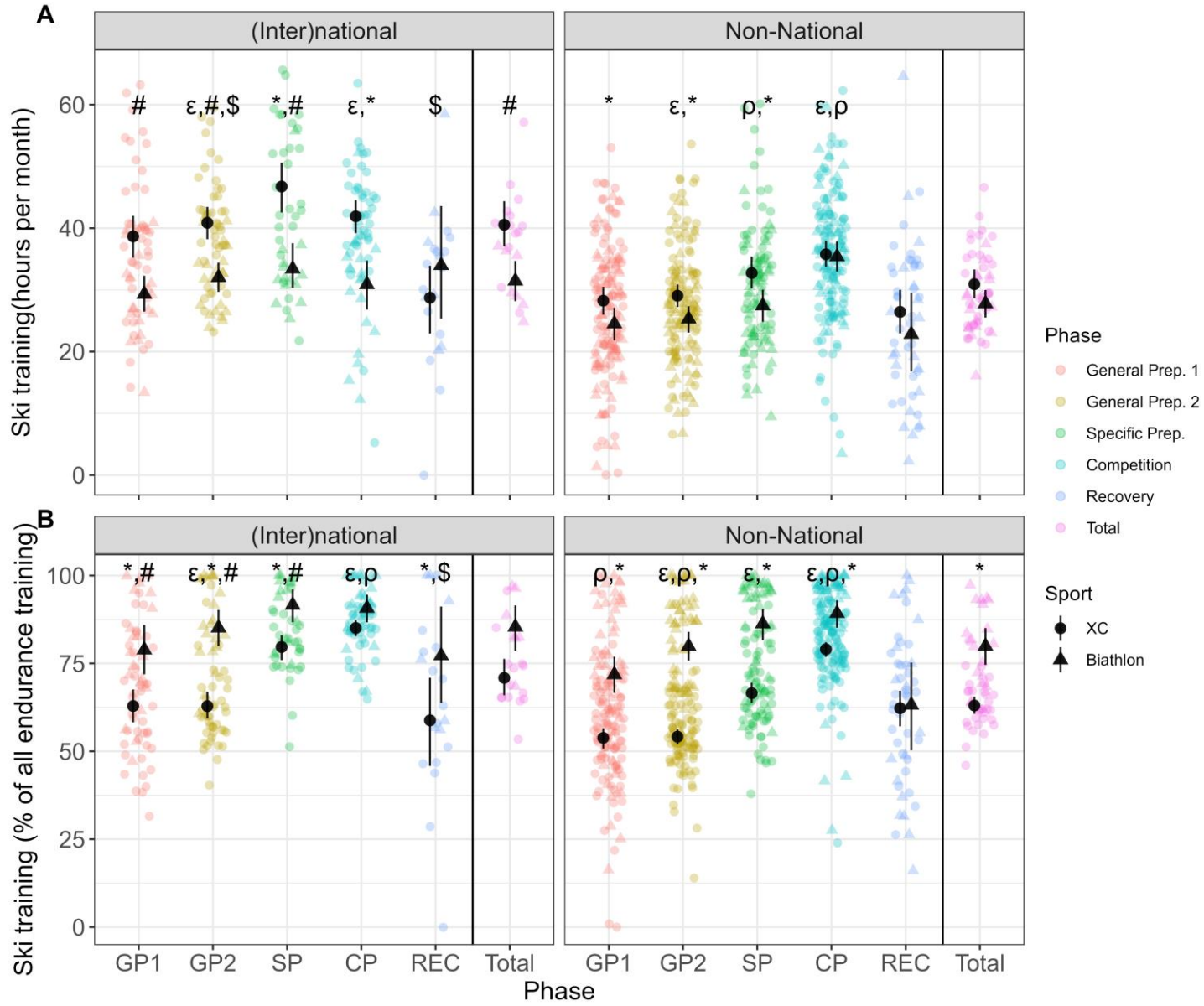
211 **Figure 2. Annual training distribution per month and phase for XC and biathletes of different age categories.** (A) junior XC; (B) senior XC; (C) junior  
212 biathlon; and, (D) senior biathlon. Data are presented as mean monthly training hours per modality (indicated by bar colour). Months are grouped per phase, as  
213 indicated by the dashed separator lines, with phases abbreviated: GP1 = general preparatory phase 1; GP2 = general preparatory phase 2; SP = specific  
214 preparatory phase; CP = competition phase; REC = recovery phase; Total = annual mean. Note: XC = cross country skiers; LIT = low-intensity training; MIT  
215 = medium-intensity training; HIT = high-intensity training; End. = cumulative LIT, MIT and HIT endurance training; Str. = strength training. Comparisons are  
216 within and between sports and age categories, for End and Str. Statistically different ( $p < .05$ ) from subsequent phase, within the same sport and competition  
217 level:  $\epsilon$  = XC;  $\rho$  = Biathlon. Statistically different ( $p < .05$ ) within the same phase: \* = sport difference compared to BI, within age category; \$ = age category  
218 difference compared to senior, within the sport.

219 *Annual periodization of exercise modes*

220 Ski training (i.e., on-snow skiing or roller skiing) comprised  $72.2 \pm 18.7\%$  of all endurance  
221 training time, with the remainder consisting of alternative endurance activities, such as running  
222 ( $18.7 \pm 16.8\%$ ) or other sports ( $9.1 \pm 13.7\%$ ). Split by sport, biathletes completed significantly  
223 lower monthly ski volume but a higher proportion of endurance training as skiing ( $29 \pm 10$   
224  $\text{h}\cdot\text{month}^{-1}$  and  $81 \pm 17\%$ ), when compared to XC skiers ( $34 \pm 12 \text{ h}\cdot\text{month}^{-1}$  and  $68 \pm 16$ ;  $p <$   
225  $.001$  to  $.005$ ;  $d = 0.47$  to  $0.94$ ). Senior XC skiers reported higher volumes of ski training during  
226 all phases ( $p < .001$  to  $.009$ ;  $d = 0.72$  to  $1.29$ ) apart from REC, and lower proportions in all  
227 phases apart from CP ( $p < .001$  to  $.033$ ;  $d = 0.74$  to  $1.59$ ), when compared to senior biathletes.  
228 Junior XC skiers had a higher volume than biathletes only during GP1 and GP2 ( $p = .031$  to  
229  $.037$ ;  $d = 0.56$  to  $0.58$ ) but were proportionally lower than biathletes for all phases apart from  
230 REC ( $p < .001$  to  $.003$ ;  $d = 0.83$  to  $1.61$ ). See Figure 3 for differences in ski training proportion,  
231 within and between sports and competition levels.

232

233 When total ski-training time was separated into the two ski techniques (skate and classic), it  
234 was found that biathletes spent a significantly greater proportion of training time using the  
235 skating technique (56–66% of total ski training), compared to XC skiers (45–48% of all ski  
236 training), during all phases ( $p < .001$ ;  $d = 0.79$  to  $1.31$ ) apart from during REC ( $p = .059$ ).  
237 However, when compared to absolute training time, there was no sport difference for skating  
238 time ( $p = 0.542$ ).



240 **Figure 3. Annual distribution of ski training (on-snow and roller-ski) per phase for XC and biathletes of different competition levels.** (A)  
241 monthly ski training per phase in hours; (B) proportion of monthly endurance training as ski training per phase. Group data for each sport are  
242 presented per phase and annually, with the mean indicated as a black shape (XC = circle; biathlon = triangle) and black vertical lines indicating  
243 95% confidence intervals. Individual athlete data points are shown for each sport, with the point colour indicating phase and shape indicating sport  
244 (XC = circle; biathlon = triangle; GP1 = red; GP2 = gold; SP = green; CP = aqua; REC = blue; Total = pink). Note: XC = cross country skiers;  
245 GP1 = general preparatory phase 1; GP2 = general preparatory phase 2; SP = specific preparatory phase; CP = competition phase; REC = recovery  
246 phase. Statistically different ( $p < .05$ ) from subsequent phase within the same sport:  $\epsilon$  = XC;  $\rho$  = Biathlon. \* = statistically different ( $p < .05$ )  
247 between sports, within the same phase and competition level. Statistically different ( $p < .05$ ) from non-national competition level within the same  
248 phase: # = XC; \$ = Biathlon.

## 249 **Discussion**

250 The purpose of this observational study was to describe and compare the annual training  
251 characteristics of Norwegian female XC skiers and biathletes across competition levels and age  
252 categories. The main findings from this study were: 1) XC skiers completed a ~10% higher  
253 annual physical training volume than biathletes (shooting excluded) and ~24% higher annual  
254 volume of strength training; 2) XC skiers reported a higher volume of overall ski training but  
255 similar volumes of skating compared to biathletes; 3) biathletes trained higher proportions of  
256 ski training and skating compared to XC skiers; 4) (inter)national level XC skiers performed  
257 higher volumes and proportions of ski training than non-national level XC skiers during the  
258 preparatory phases (i.e., GP1, GP2, SP); and, 5) the annual periodization of endurance training  
259 was different between senior and juniors, with seniors performing significantly higher volumes  
260 during GP1 and GP2 than juniors.

261

262 High annual training volumes have been associated with international athletic success in  
263 endurance sports, with previous literature reporting a range from ~700–900 h·year<sup>-1</sup> for mixed-  
264 sex cohorts of senior elite XC skiers<sup>2</sup> and world-class biathletes.<sup>3</sup> Similar values were also  
265 observed in the present study, with (inter)national senior XC skiers and biathletes completing  
266  $787 \pm 62$  and  $651 \pm 100$  h·year<sup>-1</sup>, highlighting the importance of a large training volume to  
267 remain competitive at the elite level. Biathletes reported ~10% lower annual training volumes  
268 ( $636 \pm 83$  h·year<sup>-1</sup>) compared to XC skiers ( $699 \pm 105$  h·year<sup>-1</sup>); a smaller difference than the  
269 ~30–35% lower training volumes of biathletes compared to XC skiers in previous  
270 research.<sup>4,6,7,21</sup> The exact reason(s) for this difference in training volume between the sports is  
271 unclear, however, one reason may be due to the time spent in shooting practice. Shooting  
272 accuracy is estimated to explain 35–50% of race performance in biathlon and is thus a critically  
273 important skill for success.<sup>3</sup> Therefore, it is logical that biathletes' training time may be  
274 reallocated for shooting practice, from time spent on other types of (physical) training. This is

275 supported by previous research on elite biathletes which noted that ~30–40% of annual shots  
276 were fired during ‘at-rest’ shooting-only training, with the remainder of shots undertaken  
277 during endurance training of various intensities.<sup>3,7,21</sup> Unfortunately, the volume and content of  
278 shooting training were not recorded in the presented study and should therefore be investigated  
279 in future research. An additional reason for the observed training differences may be due to the  
280 different ski technique requirements during competitions: biathletes exclusively use the skating  
281 technique, whilst XC skiers utilise both skating and classic techniques.

282

283 Total volume of annual strength training was significantly higher (~+24%) for XC skiers  
284 compared to biathletes (~51 vs 41 h·year<sup>-1</sup>). This finding aligns with recent research indicating  
285 that XC skiers perform almost double the volume of strength training compared with  
286 biathletes.<sup>6,21</sup> Similar to previous studies<sup>2,9</sup>, senior XC skiers performed more strength training  
287 during the preparatory phases, followed by decreased volumes towards CP. In contrast,  
288 biathletes reported a relatively flat periodisation, with less strength training performed during  
289 the preparatory phases. One reason for the different emphasis and periodization of strength  
290 training between the sports may be the different competitive demands: XC skiers utilize both  
291 the classic and skate skiing techniques, and also compete in knock-out style sprint races, which  
292 necessitates strength training for acceleration and sprint performance development;  
293 components which are arguably of lower importance in biathlon.<sup>3,22</sup> The requirement of rifle  
294 carriage in biathlon is known to biomechanically influence skiing technique due to the rifle  
295 weight (e.g., increased cycle rate and reduced cycle length at a given speed),<sup>23</sup> which could  
296 necessitate a higher demand for strength training. However, the observed lower strength  
297 training volume of biathletes, when compared to XC skiers, might be an effect of training  
298 prioritization around shooting. Specifically, shooting practice may reduce the time allocated to  
299 other forms of training, resulting in the prioritization of endurance training over strength

300 training for biathletes. While sport differences may potentially influence strength training  
301 requirements, there is currently a lack of empirical evidence supporting this hypothesis.  
302 Alternatively, another reason for this strength training difference could be due to tradition  
303 and/or training philosophy within each sport. More research investigating the detailed content  
304 and periodization of strength training in elite biathletes is needed.

305

306 A high proportion of training time (~89%) was completed as endurance training for both sports,  
307 which aligns with similar values reported by other studies of elite endurance athletes.<sup>2,4</sup> Senior  
308 XC skiers trained higher volumes of ski-specific training ( $38 \pm 12$  vs  $31 \pm 9$  h·month<sup>-1</sup>,  
309 respectively), but similar volumes of skating compared to senior biathletes. However, the  
310 overall proportion of ski training (Biathletes:  $81 \pm 17\%$ ; XC skiers:  $68 \pm 16\%$ ; Figure 3) and  
311 proportion of skating (56–66%) were higher in biathletes compared to XC skiers, who reported  
312 a more even distribution between the two technique styles. These identified training differences  
313 are likely caused by the distinct demands of the two sports (i.e., both the classic and skating  
314 technique styles used in XC skiing compared to the singular use of skating in biathlon). Still,  
315 this finding indicates that biathletes may ‘compensate’ for their lower endurance training  
316 volumes with higher proportions of ski training in the skating style.

317

318 Irrespective of sport, (inter)national level athletes reported significantly higher annual total  
319 training volumes ( $740 \pm 90$  h·year<sup>-1</sup>) compared to non-national level athletes ( $649 \pm 95$  h·year<sup>-1</sup>),  
320 further supporting the importance of a large training volume to compete at the highest level  
321 in endurance sports.<sup>22,24</sup> This finding is further supported when considering ski training  
322 volumes, where (inter)national level XC skiers reported significantly higher monthly training  
323 during the preparatory phases (i.e., GP1, GP2 and SP) and overall (Figure 3) when compared  
324 to non-national skiers. In contrast, a competition-level difference in ski training time for

325 biathletes was only found for GP2 and REC. The reason for this finding is uncertain, and more  
326 data on the periodization of biathlon athletes' training, including shooting data, is necessary to  
327 understand the differences in periodization patterns between XC skiers and biathlete training.

328

329 A significant difference was observed between the pattern of endurance training for junior and  
330 senior athletes, with the former group reporting lower endurance training across the two general  
331 preparatory phases (~48–49 h·month<sup>-1</sup>) that was maintained during SP and CP (~44–46  
332 h·month<sup>-1</sup>; Figure 2). Conversely, senior athletes reported a higher training volume during the  
333 GP phases (~59–60 h·month<sup>-1</sup>), before significantly tapering towards SP and CP (47–52  
334 h·month<sup>-1</sup>). The model of endurance training found for senior athletes in this study is similar  
335 to the volume distribution previously described for senior biathletes<sup>5</sup> and XC skiers.<sup>2,9</sup> This is  
336 likely explained by increased specialization as a senior athlete, implying the capacity and time  
337 to perform higher training volumes during the preparatory phases, while more frequent  
338 traveling and competitions make it less possible to perform high training volumes during CP.  
339 The attenuated training taper for junior athletes may also be due to the later start of the  
340 competitive season in juniors and the reduced number of competitive international events, thus  
341 allowing more time spent training, rather than travelling. Alternatively, or simultaneously, the  
342 maintenance of junior athletes' training volume may also be prioritized over tapering for  
343 competition, as maintenance of training for the development of aerobic and technical capacities  
344 could be considered more beneficial over the longer term.

345

346 Volume and proportion of HIT were found to be lower for seniors compared to juniors during  
347 the general preparatory phases (i.e., GP1 and GP). This result is initially surprising, as previous  
348 research has emphasized the importance of increasing HIT to further develop aerobic  
349 capacity.<sup>25</sup> Still, similar developments in intensity distribution have previously been observed



350 in the world's most successful female XC skier, emphasizing more HIT during the early stages  
351 of her senior career but then higher LIT and MIT during the later years.<sup>9,26</sup> Furthermore,  
352 analyses of endurance athletes have demonstrated that increases in training volume are  
353 primarily due to a rise in LIT,<sup>15</sup> and it has been speculated that the quality of HIT sessions  
354 might be of more importance than quantity. Longitudinal research has also highlighted a  
355 progressive improvement in skiing economy as athletes transit from the late teenage period  
356 (juniors) to adulthood (seniors), potentially due to a larger training volume arising from an  
357 increase in low-intensity training volume as they age.<sup>27</sup> Overall, the present data indicate that  
358 increasing endurance volume during the general preparatory phases with higher volumes of  
359 LIT and MIT might assist an athlete in successfully transitioning from junior to senior level,  
360 regardless of sport.

361

362 The training data for the present study was collected during the worldwide outbreak of the  
363 COVID-19 virus, which limited the number of competitive events and laboratory testing  
364 sessions that athletes were able to attend. Personal communication with a representative group  
365 of coaches and athletes indicated that training characteristics and periodization patterns were  
366 the same as before COVID-19. In most groups, training plans were made before COVID-19  
367 began, and the decreased number of competitions was offset by test races and high-intensity  
368 sessions, to maintain the planned intensity distribution. Still, care should be taken when  
369 evaluating the results from this study, since pandemic-induced changes may have occurred.  
370 For example, there are indications that athletes reported reduced sickness, had fewer travel  
371 days, and focused less on tapering than in pre- and post-COVID years, thereby allowing more  
372 time for training and possibly higher training volumes. While it is difficult to determine the  
373 true effect of the pandemic on the present study, the similarity of data to previous research<sup>2,3</sup>

374 that has reported annual training volume and load distribution, suggests there was, at most, a  
375 limited influence.

376

### 377 **Practical Applications**

378 The present study described how the different loading factors were balanced across the annual  
379 cycle to meet the sports-specific demands in XC skiing and biathlon. While XC skiers on  
380 average performed ~10% higher endurance and ~24% higher strength training volumes,  
381 biathletes ‘compensated’ with higher proportions of ski-specific training in the skating style.  
382 The lower training volumes in biathlon likely reflect the additional demands of shooting  
383 practice, which is essential for success in this sport. In addition, our data demonstrated  
384 differences in training between competition levels that could highlight potential improvement  
385 areas for lower-level athletes. The differences found between junior and senior athletes, with  
386 overall less volume but greater maintenance of training throughout the competitive period in  
387 juniors, align with their training development and competitive schedule.

388

### 389 **Conclusions**

390 This study describes and compares the training characteristics of highly-trained (regional-level  
391 to world-class) female XC skiers and biathletes, across the junior and senior age categories.  
392 The higher annual training volume by XC skiers compared to biathletes is likely caused by the  
393 different demands of the two sports; XC skiing balances training time for the two different  
394 skiing styles while biathlon requires additional shooting practice. To compensate for their  
395 lower ski-training volume, biathletes spend a higher proportion of their total endurance time as  
396 ski training, particularly in the skating technique. A high training volume, particularly during  
397 the preparatory phases, seems to be an important differentiating factor between competition  
398 levels of XC skiers. However, this volume difference was not significant in biathletes, possibly

399 due to greater focus on shooting practice as this is an additional performance-differentiating  
400 factor. Clear differences were observed in the annual periodization between junior and senior  
401 athletes. While senior athletes demonstrated a traditional periodization pattern with a reduction  
402 in training volume from the preparatory phases towards the competitive phase, junior athletes  
403 had a relatively consistent training volume across the annual phases. Future studies should  
404 investigate the sophisticated interplay of physical training and shooting practice performed by  
405 biathletes at different ages and performance levels.

406

#### 407 **Acknowledgments**

408 The authors would like to acknowledge all participants for being involved in the study and Tor  
409 Oskar Thomassen for his help in data collection and recruitment. The study was part of the  
410 FENDURA project at UiT The Arctic University of Norway, in collaboration with the  
411 Norwegian University of Science and Technology, the Norwegian Olympic Committee  
412 (Olympiatoppen), the Norwegian Ski Federation, and the Norwegian Biathlon Federation.

413

#### 414 **Funding**

415 This study, as part of the larger FENDURA project, was funded by the Tromsø Research  
416 Foundation.

417

418

419 **References**

- 420 1. Sandbakk Ø. The Evolution of Champion Cross-Country-Skier Training: From  
421 Lumberjacks to Professional Athletes. *Int J Sports Physiol Perform.* 2017;12(2):254-259.  
422 doi:10.1123/ijspp.2016-0816
- 423 2. Tønnessen E, Sylta Ø, Haugen TA, Hem E, Svendsen IS, Seiler S. The Road to Gold:  
424 Training and Peaking Characteristics in the Year Prior to a Gold Medal Endurance  
425 Performance. *PLOS ONE.* 2014;9(7):e101796. doi:10.1371/journal.pone.0101796
- 426 3. Laaksonen MS, Jonsson M, Holmberg HC. The Olympic Biathlon – Recent Advances  
427 and Perspectives After Pyeongchang. *Front Physiol.* 2018;9.  
428 doi:10.3389/fphys.2018.00796
- 429 4. Sandbakk Ø, Holmberg HC. Physiological Capacity and Training Routines of Elite  
430 Cross-Country Skiers: Approaching the Upper Limits of Human Endurance. *Int J Sports  
431 Physiol Perform.* 2017;12(8):1003-1011. doi:10.1123/ijspp.2016-0749
- 432 5. Myakinchenko EB, Kriuchkov AS, Adodin NV, Feofilaktov V. The Annual Periodization  
433 of Training Volumes of International-Level Cross-Country Skiers and Biathletes. *Int J  
434 Sports Physiol Perform.* 2020;15(8):1181-1188. doi:10.1123/ijspp.2019-0220
- 435 6. Myakinchenko EB, Heil DP, Kriuchkov AS, Feofilaktov VV, Kuzmichev VA, Adodin  
436 NV. Physiological profiles and training loads of international level male and female  
437 cross-country skiers and biathletes. *Sci Sports.* 2022;37(5):490.e1-490.e10.  
438 doi:10.1016/j.scispo.2021.09.004
- 439 7. Schmitt L, Bouthiaux S, Millet GP. Eleven Years' Monitoring of the World's Most  
440 Successful Male Biathlete of the Last Decade. *Int J Sports Physiol Perform.*  
441 2021;16(6):900-905. doi:10.1123/ijspp.2020-0148
- 442 8. Losnegard T, Myklebust H, Spencer M, Hallén J. Seasonal Variations in VO<sub>2</sub>max, O<sub>2</sub>-  
443 Cost, O<sub>2</sub>-Deficit, and Performance in Elite Cross-Country Skiers. *J Strength Cond Res.*  
444 2013;27(7):1780-1790. doi:10.1519/JSC.0b013e31827368f6
- 445 9. Solli GS, Tønnessen E, Sandbakk Ø. The Training Characteristics of the World's Most  
446 Successful Female Cross-Country Skier. *Front Physiol.* 2017;8:1069.  
447 doi:10.3389/fphys.2017.01069
- 448 10. Karlsson Ø, Laaksonen MS, McGawley K. Training and illness characteristics of cross-  
449 country skiers transitioning from junior to senior level. *PLOS ONE.*  
450 2021;16(5):e0250088. doi:10.1371/journal.pone.0250088
- 451 11. Sandbakk Ø, Hegge AM, Losnegard T, Skattebo Ø, Tønnessen E, Holmberg HC. The  
452 Physiological Capacity of the World's Highest Ranked Female Cross-country Skiers.  
453 *Med Sci Sports Exerc.* 2016;48(6):1091-1100. doi:10.1249/mss.0000000000000862
- 454 12. Engseth TP, Andersson EP, Solli GS, et al. Prevalence and Self-Perceived Experiences  
455 With the Use of Hormonal Contraceptives Among Competitive Female Cross-Country  
456 Skiers and Biathletes in Norway: The FENDURA Project. *Front Sports Act Living.*  
457 2022;4. doi:10.3389/fspor.2022.873222

- 458 13. McKay AKA, Stellingwerff T, Smith ES, et al. Defining Training and Performance  
459 Caliber: A Participant Classification Framework. *Int J Sports Physiol Perform.*  
460 2022;17(2):317-331. doi:10.1123/ijsp.2021-0451
- 461 14. Foster C, Florhaug JA, Franklin J, et al. A New Approach to Monitoring Exercise  
462 Training. *J Strength Cond Res.* 2001;15(1):109-115.
- 463 15. Seiler S. What is best practice for training intensity and duration distribution in  
464 endurance athletes? *Int J Sports Physiol Perform.* 2010;5(3):276-291.  
465 doi:10.1123/ijsp.5.3.276
- 466 16. Sylta Ø, Tønnessen E, Seiler S. From Heart-Rate Data to Training Quantification: A  
467 Comparison of 3 Methods of Training-Intensity Analysis. *Int J Sports Physiol Perform.*  
468 2014;9(1):100-107. doi:10.1123/ijsp.2013-0298
- 469 17. Tønnessen E, Svendsen IS, Rønnestad BR, Hisdal J, Haugen TA, Seiler S. The Annual  
470 Training Periodization of 8 World Champions in Orienteering. *Int J Sports Physiol*  
471 *Perform.* 2015;10(1):29-38. doi:10.1123/ijsp.2014-0005
- 472 18. Bates D, Mächler M, Bolker B, Walker S. Fitting Linear Mixed-Effects Models Using  
473 lme4. *J Stat Softw.* 2015;67:1-48. doi:10.18637/jss.v067.i01
- 474 19. Hartig F. DHARMA: Residual Diagnostics for Hierarchical (Multi-Level / Mixed)  
475 Regression Models. Published online 2022. <http://florianhartig.github.io/DHARMA/>
- 476 20. Lenth R, Buerkner P, Herve M, Love J, Riebl H, Singmann H. emmeans: Estimated  
477 Marginal Means, aka Least-Squares Means. Published online September 18, 2020.  
478 Accessed September 28, 2020. <https://CRAN.R-project.org/package=emmeans>
- 479 21. Solli GS, Flom AH, Talsnes RK. Long-term development of performance, physiological,  
480 and training characteristics in a world-class female biathlete. *Front Sports Act Living.*  
481 2023;5. Accessed July 10, 2023.  
482 <https://www.frontiersin.org/articles/10.3389/fspor.2023.1197793>
- 483 22. Sandbakk Ø, Holmberg HC. A Reappraisal of Success Factors for Olympic Cross-  
484 Country Skiing. *Int J Sports Physiol Perform.* 2014;9(1):117-121.  
485 doi:10.1123/ijsp.2013-0373
- 486 23. Stöggl T, Bishop P, Höök M, Willis S, Holmberg HC. Effect of carrying a rifle on  
487 physiology and biomechanical responses in biathletes. *Med Sci Sports Exerc.*  
488 2015;47(3):617-624. doi:10.1249/MSS.0000000000000438
- 489 24. Stöggl TL, Sperlich B. The training intensity distribution among well-trained and elite  
490 endurance athletes. *Front Physiol.* 2015;6. doi:10.3389/fphys.2015.00295
- 491 25. Laursen PB, Jenkins DG. The scientific basis for high-intensity interval training:  
492 optimising training programmes and maximising performance in highly trained  
493 endurance athletes. *Sports Med Auckl NZ.* 2002;32(1):53-73. doi:10.2165/00007256-  
494 200232010-00003

- 495 26. Solli GS, Tønnessen E, Sandbakk Ø. Block vs. Traditional Periodization of HIT: Two  
496 Different Paths to Success for the World's Best Cross-Country Skier. *Front Physiol.*  
497 2019;10. doi:10.3389/fphys.2019.00375
- 498 27. Zoppirolli C, Modena R, Fornasiero A, et al. Talent Development in Young Cross-  
499 Country Skiers: Longitudinal Analysis of Anthropometric and Physiological  
500 Characteristics. *Front Sports Act Living.* 2020;2. Accessed July 7, 2023.  
501 <https://www.frontiersin.org/articles/10.3389/fspor.2020.00111>

502

503

504 **Figure Captions**

505 **Figure 1. Distribution of monthly training per phase for XC and biathlon, split by**  
506 **competition level and age category.** Group data for each sport are presented as total training  
507 hours per month, annually and per phase, with the mean indicated as a black shape (XC =  
508 circle; biathlon = triangle) and black vertical lines indicating 95% confidence intervals.  
509 Individual athlete data points are shown for each sport, with the shape indicating sport and  
510 point colour indicating phase (GP1 = red; GP2 = gold; SP = green; CP = aqua; REC = blue;  
511 Total = pink). Note: XC = cross country skiers; GP1 = general preparatory phase 1; GP2 =  
512 general preparatory phase 2; SP = specific preparatory phase; CP = competition phase; REC =  
513 recovery phase.

514

515 **Figure 2. Annual training distribution per month and phase for XC and biathletes of**  
516 **different age categories.** (A) junior XC; (B) senior XC; (C) junior biathlon; and, (D) senior  
517 biathlon. Data are presented as mean monthly training hours per modality (indicated by bar  
518 colour). Months are grouped per phase, as indicated by the dashed separator lines, with phases  
519 abbreviated: GP1 = general preparatory phase 1; GP2 = general preparatory phase 2; SP =  
520 specific preparatory phase; CP = competition phase; REC = recovery phase; Total = annual  
521 mean. Note: XC = cross country skiers; LIT = low-intensity training; MIT = medium-intensity  
522 training; HIT = high-intensity training; End. = cumulative LIT, MIT and HIT endurance  
523 training; Str. = strength training. Comparisons are within and between sports and age  
524 categories, for End and Str. Statistically different ( $p < .05$ ) from subsequent phase, within the  
525 same sport and competition level:  $\epsilon$  = XC;  $\rho$  = Biathlon. Statistically different ( $p < .05$ ) within  
526 the same phase: \* = sport difference compared to BI, within age category; \$ = age category  
527 difference compared to senior, within the sport.

528

529 **Figure 3. Annual distribution of ski training (on-snow and roller-ski) per phase for XC**  
530 **and biathletes of different competition levels.** (A) monthly ski training per phase in hours;  
531 (B) proportion of monthly endurance training as ski training per phase. Group data for each  
532 sport are presented per phase and annually, with the mean indicated as a black shape (XC =  
533 circle; biathlon = triangle) and black vertical lines indicating 95% confidence intervals.  
534 Individual athlete data points are shown for each sport, with the point colour indicating phase  
535 and shape indicating sport (XC = circle; biathlon = triangle; GP1 = red; GP2 = gold; SP =  
536 green; CP = aqua; REC = blue; Total = pink). Note: XC = cross country skiers; GP1 = general

537 preparatory phase 1; GP2 = general preparatory phase 2; SP = specific preparatory phase; CP  
538 = competition phase; REC = recovery phase. Statistically different ( $p < .05$ ) from subsequent  
539 phase within the same sport:  $\epsilon$  = XC;  $\rho$  = Biathlon. \* = statistically different ( $p < .05$ ) between  
540 sports, within the same phase and competition level. Statistically different ( $p < .05$ ) from non-  
541 national competition level within the same phase: # = XC; \$ = Biathlon.