

# SKALALINJER II

OVER  
ULIKE TYPER  
FIRKLINGER

TMA Music 55  
ISBN 978-82-92985-58-8  
ISMN 979-0-706693-58-3

Dette er den andre boken som omhandler skalalinjer spilt over firklanger.  
Som i forrige bok starter man på 1 (grunntone), 3 (ters), 5 (kvint) og 7 (septim) over ulike firklangstyper og kombinerer med opp/nedadgående skalabevegelse.  
Prinsippet at disse linjene spilles på første, andre og tredje streng videreføres.

Denne boken viser først en oversikt over skalalinjer over en og en firklang.  
Deretter vises noen akkordprogresjoner der skalalinjer er satt inn ut fra ulike startpunkt.

Det forutsettes at du selv øver inn så mange kombinasjoner av disse som mulig da eksemplene i boken bare viser noen få av disse.

Alle skalalinjene/akkordene går over to og to takter for å forenkle innøvelsen.

## OVERSIKT SKALALINJER OVER ULIKE TYPER FIRKLANGER

Eksemplene er skrevet kun ut fra tonalitet A for eksemplets skyld

### Maj7

#### 1. Starter fra 1 (grunntone)

##### a) oppadgående bevegelse

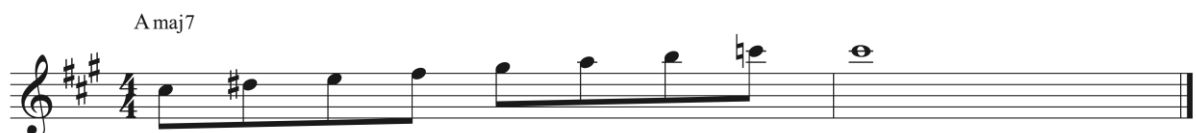


##### b) nedadgående bevegelse



#### 2. Starter fra 3 (ters)

##### a) oppadgående bevegelse



**b) nedadgående bevegelse**

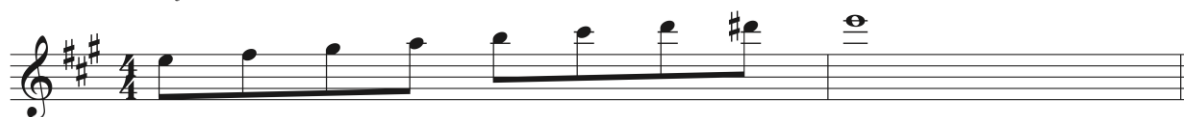
A maj7



**3. Starter fra 5 (kvint)**


**a) oppadgående bevegelse**

A maj7



**b) nedadgående bevegelse**

A maj7



**4. Starter fra 7 (septim)**

**a) oppadgående bevegelse**

A maj7  
8<sup>va</sup>



**b) nedadgående bevegelse**

A maj7  
8<sup>va</sup>



## Moll7

### 1. Starter fra 1 (grunntone)

#### a) oppadgående bevegelse

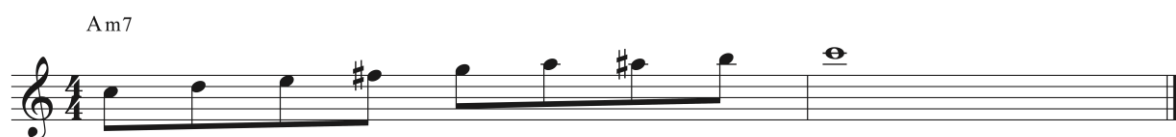


#### b) nedadgående bevegelse



### 2. Starter fra b3 (ters)

#### a) oppadgående bevegelse



#### b) nedadgående bevegelse



### 3. Starter fra 5 (kvint)

#### a) oppadgående bevegelse



**b) nedadgående bevegelse**

Am7

A musical staff in 4/4 time showing a descending eighth-note scale starting on A4 and ending on A2. The notes are A4, G4, F4, E4, D4, C4, B3, A3, G3, F3, E3, D3, C3, B2, A2. The piece ends with a whole note A2. The chord Am7 is indicated above the staff.

**4. Starter fra b7 (septim)**

**a) oppadgående bevegelse**

Am7  
8<sup>va</sup>

A musical staff in 4/4 time showing an ascending eighth-note scale starting on A2 and ending on A4. The notes are A2, B2, C3, D3, E3, F3, G3, A3, B3, C4, D4, E4, F4, G4, A4. The piece ends with a whole note A4. The chord Am7 and the octave sign 8<sup>va</sup> are indicated above the staff.

**b) nedadgående bevegelse**

Am7  
8<sup>va</sup>

A musical staff in 4/4 time showing a descending eighth-note scale starting on A4 and ending on A2. The notes are A4, G4, F4, E4, D4, C4, B3, A3, G3, F3, E3, D3, C3, B2, A2. The piece ends with a whole note A2. The chord Am7 and the octave sign 8<sup>va</sup> are indicated above the staff.

**Dominant 7 (b7)**

**1. Starter fra 1 (grunntone)**

**a) oppadgående bevegelse**

A7

A musical staff in 4/4 time showing an ascending eighth-note scale starting on A3 and ending on A4. The notes are A3, B3, C4, D4, E4, F#4, G#4, A4. The piece ends with a whole note A4. The chord A7 is indicated above the staff.

**b) nedadgående bevegelse**

A7

A musical staff in 4/4 time showing a descending eighth-note scale starting on A4 and ending on A3. The notes are A4, G#4, F#4, E4, D4, C4, B3, A3. The piece ends with a whole note A3. The chord A7 is indicated above the staff.

## 2. Starter fra 3 (ters)

### a) oppadgående bevegelse

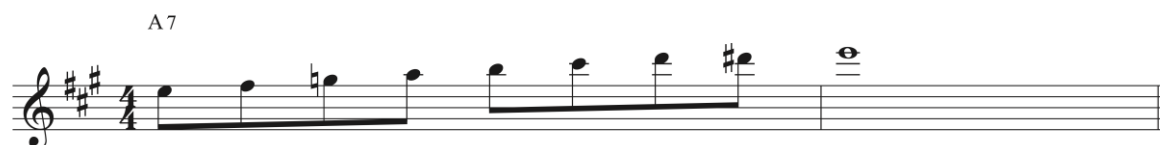


### b) nedadgående bevegelse



## 3. Starter fra 5 (kvint)

### a) oppadgående bevegelse



### b) nedadgående bevegelse



## 4. Starter fra b7 (septim)

### a) oppadgående bevegelse



**b) nedadgående bevegelse**

A7  
8<sup>va</sup>



**Moll7b5**

**1. Starter fra 1 (grunntone)**

**a) oppadgående bevegelse**

Am7b5



**b) nedadgående bevegelse**

Am7b5



**2. Starter fra b3 (ters)**

**a) oppadgående bevegelse**

Am7b5



**b) nedadgående bevegelse**

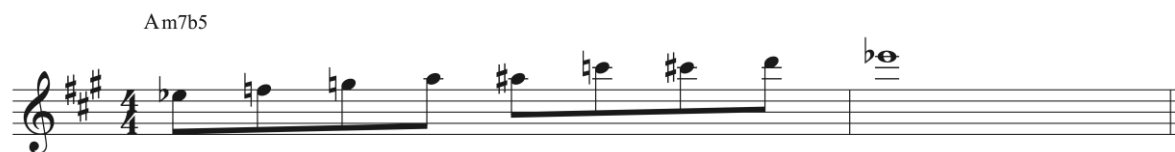
Am7b5



### 3. Starter fra b5 (kvint)

#### a) oppadgående bevegelse

Am7b5



#### b) nedadgående bevegelse

Am7b5



### 4. Starter fra b7 (septim)

#### a) oppadgående bevegelse

Am7b5  
8va



#### b) nedadgående bevegelse

Am7b5  
8va





## Dim

### 1. Starter fra 1 (grunntone)

#### a) oppadgående bevegelse

A dim



#### b) nedadgående bevegelse

A dim



### 2. Starter fra b3 (ters)

#### a) oppadgående bevegelse

A dim



#### b) nedadgående bevegelse


A dim



### 3. Starter fra b5 (kvint)

#### a) oppadgående bevegelse

A dim



#### b) nedadgående bevegelse

A dim



### 4. Starter fra bb7 (septim)

#### a) oppadgående bevegelse

A dim  
8<sup>va</sup>



#### b) nedadgående bevegelse

A dim  
8<sup>va</sup>



## Dominant 7 b5 (b7b5)

### 1. Starter fra 1 (grunntone)

#### a) oppadgående bevegelse

A7b5



#### b) nedadgående bevegelse

A7b5



### 2. Starter fra 3 (ters)

#### a) oppadgående bevegelse

A7b5



#### b) nedadgående bevegelse

A7b5



### 3. Starter fra b5 (kvint)

#### a) oppadgående bevegelse

A maj7#5



#### b) nedadgående bevegelse

A 7b5



### 4. Starter fra b7 (septim)

#### a) oppadgående bevegelse

A 7b5  
8<sup>va</sup>



#### b) nedadgående bevegelse

A 7b5



## Maj7#5

### 1. Starter fra 1 (grunntone)

#### a) oppadgående bevegelse

A maj7#5



#### b) nedadgående bevegelse

A maj7#5



### 2. Starter fra 3 (ters)

#### a) oppadgående bevegelse

A maj7#5



#### b) nedadgående bevegelse

A maj7#5



### 3. Starter fra #5 (kvint)

#### a) oppadgående bevegelse

Amaj7#5

A musical staff in treble clef with a key signature of two sharps (F# and C#) and a 4/4 time signature. The melody starts on the fifth degree (E) and ascends stepwise through F#, G, A, B, C, D, E, and ends on a whole note chord of A major 7th sharp 5th (A, C#, E, G).

#### b) nedadgående bevegelse

Amaj7#5

A musical staff in treble clef with a key signature of two sharps (F# and C#) and a 4/4 time signature. The melody starts on the fifth degree (E) and descends stepwise through D, C, B, A, G, F#, and ends on a whole note chord of A major 7th sharp 5th (A, C#, E, G).

### 4. Starter fra 7 (septim)

#### a) oppadgående bevegelse

Amaj7#5  
8<sup>va</sup>

A musical staff in treble clef with a key signature of two sharps (F# and C#) and a 4/4 time signature. The melody starts on the seventh degree (G) and ascends stepwise through A, B, C, D, E, F#, and ends on a whole note chord of A major 7th sharp 5th (A, C#, E, G).

#### b) nedadgående bevegelse

Amaj7#5  
8<sup>va</sup>

A musical staff in treble clef with a key signature of two sharps (F# and C#) and a 4/4 time signature. The melody starts on the seventh degree (G) and descends stepwise through F#, E, D, C, B, A, and ends on a whole note chord of A major 7th sharp 5th (A, C#, E, G).

## Dominant 7 #5 (b7#5)

### 1. Starter fra 1 (grunntone)

#### a) oppadgående bevegelse

A7#5



#### b) nedadgående bevegelse

A7#5



### 2. Starter fra 3 (ters)

#### a) oppadgående bevegelse

A7#5



#### b) nedadgående bevegelse

A7#5



### 3. Starter fra 5 (kvint)

#### a) oppadgående bevegelse

A 7#5  
8<sup>va</sup>



#### b) nedadgående bevegelse

A 7#5  
8<sup>va</sup>



### 4. Starter fra 7 (septim)

#### a) oppadgående bevegelse

A 7#5  
8<sup>va</sup>



#### b) nedadgående bevegelse

A 7#5  
8<sup>va</sup>





## AKKORDPROGRESJONER – EKSEMPLER

### 1. Starter fra 1 (grunntone) oppadgående bevegelse

Example 1: Ascending movement starting from the tonic. The key signature is A major (two sharps). The time signature is 4/4. The first staff shows the melody starting on A4, moving up stepwise to G#5, with a whole rest on the final note. Chords are A maj7 and F#m7. The second staff starts at measure 5, continuing the melody up to G#5, with a whole rest on the final note. Chords are Hm7 and E7.

### 2. Starter fra 1 (grunntone) nedadgående bevegelse

Example 2: Descending movement starting from the tonic. The key signature is A major (two sharps). The time signature is 4/4. The first staff shows the melody starting on G#5, moving down stepwise to A4, with a whole rest on the final note. Chords are A maj7 and F#m7. The second staff starts at measure 5, continuing the melody down to A4, with a whole rest on the final note. Chords are Hm7 and E7.

### 3. Starter fra 1 (grunntone) oppadgående bevegelse, men i Bb-dur

Example 3: Ascending movement starting from the tonic in Bb major. The key signature is Bb major (two flats). The time signature is 4/4. The first staff shows the melody starting on Bb4, moving up stepwise to Ab5, with a whole rest on the final note. Chords are Bbmaj7 and Gm7. The second staff starts at measure 5, continuing the melody up to Ab5, with a whole rest on the final note. Chords are Cm7 and F7.

#### 4. Starter fra 1 (grunntone) nedadgående bevegelse. Men i Bb-dur

Musical notation for exercise 4, showing two staves. The first staff starts with a treble clef, a key signature of two flats (Bb), and a 4/4 time signature. The first measure is labeled with the chord Bbmaj7. The second measure is labeled with Gm7. The second staff starts with a treble clef, a key signature of two flats (Bb), and a 4/4 time signature. The first measure is labeled with the chord F7. The notation consists of eighth and quarter notes, with some notes beamed together.

#### 5. Starter fra 1 (grunntone) opp- og nedadgående bevegelse

Musical notation for exercise 5, showing two staves. The first staff starts with a treble clef, a key signature of three sharps (F#, C#, G#), and a 4/4 time signature. The first measure is labeled with the chord Amaj7. The second measure is labeled with F#m7. The second staff starts with a treble clef, a key signature of three sharps (F#, C#, G#), and a 4/4 time signature. The first measure is labeled with Hm7. The second measure is labeled with E7. The notation consists of eighth and quarter notes, with some notes beamed together.

#### 6. Starter fra 1 (grunntone) ned- og oppadgående bevegelse

Musical notation for exercise 6, showing two staves. The first staff starts with a treble clef, a key signature of three sharps (F#, C#, G#), and a 4/4 time signature. The first measure is labeled with the chord Amaj7. The second measure is labeled with F#m7. The second staff starts with a treble clef, a key signature of three sharps (F#, C#, G#), and a 4/4 time signature. The first measure is labeled with Hm7. The second measure is labeled with E7. The notation consists of eighth and quarter notes, with some notes beamed together.

7. Starter fra 1 (grunntone) ned- og oppadgående bevegelse, men i Bb-dur

Exercise 7 is written in B-flat major (Bb-dur) and 4/4 time. The first staff starts with a Bbmaj7 chord and contains a descending eighth-note scale: Bb4, A4, G4, F4, E4, D4, C4, Bb3. The second staff starts with a Gm7 chord and contains an ascending eighth-note scale: Bb3, C4, D4, E4, F4, G4, A4, Bb4. The key signature has two flats (Bb and Eb).

8. Starter på 1 (grunntone) oppadgående bevegelse

Exercise 8 is written in C major and 4/4 time. The first staff starts with a Cmaj7 chord and contains an ascending eighth-note scale: C4, D4, E4, F4, G4, A4, B4, C5. The second staff starts with a Dm7 chord and contains a descending eighth-note scale: C5, B4, A4, G4, F4, E4, D4, C4. The key signature has no flats or sharps.

9. Starter på 1 (grunntone) nedadgående bevegelse

Exercise 9 is written in C major and 4/4 time. The first staff starts with a Cmaj7 chord and contains a descending eighth-note scale: C5, B4, A4, G4, F4, E4, D4, C4. The second staff starts with a Dm7 chord and contains an ascending eighth-note scale: C4, D4, E4, F4, G4, A4, B4, C5. The key signature has no flats or sharps.

## 10. Starter på 1 (grunntone) opp- og nedadgående bevegelse

Exercise 10 consists of two staves of music in 4/4 time. The first staff starts with a C major 7 chord (Cmaj7) and features an ascending eighth-note scale: C4, D4, E4, F#4, G4, A4, B4, C5. The second staff starts with a D minor 7 chord (Dm7) and features a descending eighth-note scale: C5, B4, A4, G4, F#4, E4, D4, C4. The second staff begins with a measure rest marked '5'.

## Ulike startpunkt med opp- eller nedadgående bevegelse

### 1. Starter på 1357 (grunntone-ters-kvint-septim) to takter hver, oppadgående bevegelse

Exercise 1 consists of two staves of music in 4/4 time, with a key signature of two sharps (F# and C#). The first staff starts with an A major 7 chord (Amaj7) and features an ascending eighth-note scale: A3, B3, C#4, D4, E4, F#4, G#4, A4. The second staff starts with an F# minor 7 chord (F#m7) and features a descending eighth-note scale: A4, G#4, F#4, E4, D4, C#4, B3, A3. The second staff begins with a measure rest marked '5'.

### 2. Starter på 7531, oppadgående bevegelse

Exercise 2 consists of two staves of music in 4/4 time, with a key signature of two sharps (F# and C#). The first staff starts with an A major 7 chord (Amaj7) and features an ascending eighth-note scale: E4, F#4, G#4, A4, B4, C#5, D5, E5. The second staff starts with an F# minor 7 chord (F#m7) and features a descending eighth-note scale: E5, D5, C#5, B4, A4, G#4, F#4, E4. The second staff begins with a measure rest marked '5'.

### 3. Starter på 3517, oppadgående bevegelse

Musical notation for exercise 3, starting on 3517, ascending movement. The notation is in treble clef, 4/4 time, and A major. The first line shows the notes A4, B4, C5, D5, E5, F#5, G5, A5, with a fermata over the final A5. The second line shows the notes A4, B4, C5, D5, E5, F#5, G5, A5, with a fermata over the final A5. Chord symbols A maj7 and F#m7 are placed above the first and second lines respectively. A measure rest is present in the second measure of the first line. A measure rest is present in the second measure of the second line. A measure rest is present in the third measure of the second line.

### 4. Starter på 5371, oppadgående bevegelse

Musical notation for exercise 4, starting on 5371, ascending movement. The notation is in treble clef, 4/4 time, and A major. The first line shows the notes A4, B4, C5, D5, E5, F#5, G5, A5, with a fermata over the final A5. The second line shows the notes A4, B4, C5, D5, E5, F#5, G5, A5, with a fermata over the final A5. Chord symbols A maj7 and F#m7 are placed above the first and second lines respectively. A measure rest is present in the second measure of the first line. A measure rest is present in the second measure of the second line. A measure rest is present in the third measure of the second line.

### 5. Starter på 1357, opp- og nedadgående bevegelse

Musical notation for exercise 5, starting on 1357, ascending and descending movement. The notation is in treble clef, 4/4 time, and C major. The first line shows the notes C4, D4, E4, F4, G4, A4, B4, C5, with a fermata over the final C5. The second line shows the notes C5, B4, A4, G4, F4, E4, D4, C4, with a fermata over the final C4. Chord symbols C maj7 and Dm7 are placed above the first and second lines respectively. A measure rest is present in the second measure of the first line. A measure rest is present in the second measure of the second line. A measure rest is present in the third measure of the second line.

## 6. Starter på 7531, opp- og nedadgående bevegelse

Exercise 6 consists of two staves of music in 4/4 time. The first staff starts with a Cmaj7 chord and contains measures 1 and 2. The second staff starts with a Dm7 chord and contains measures 3 and 4. The melody in measure 1 is C4-D4-E4-F#4-G4-A4-B4-C5. The melody in measure 2 is B4-A4-G4-F#4-E4-D4-C4. The melody in measure 3 is C4-B3-A3-G3-F#3-E3-D3-C3. The melody in measure 4 is B3-A3-G3-F#3-E3-D3-C3.

Cmaj7

Dm7

Bbmaj7

Hm7b5

## 7. Starter på 1357, opp- og nedadgående bevegelse

Exercise 7 consists of four staves of music in 4/4 time. The first staff starts with an Hmaj7 chord and contains measures 1 and 2. The second staff starts with a D7 chord and contains measures 3 and 4. The third staff starts with a Gmaj7 chord and contains measures 5 and 6. The fourth staff starts with a Bb7 chord and contains measures 7 and 8. The fifth staff starts with an Ebmaj7 chord and contains measures 9 and 10. The sixth staff starts with an Am7 chord and contains measures 11 and 12. The seventh staff starts with a D7 chord and contains measures 13 and 14. The eighth staff starts with a Gmaj7 chord and contains measures 15 and 16. The melody in measure 1 is H4-A4-B4-C5-D5-E5-F#5-G5-A5-B5-C6. The melody in measure 2 is A5-G5-F#5-E5-D5-C5-B4-A4. The melody in measure 3 is H4-A4-B4-C5-D5-E5-F#5-G5-A5-B5-C6. The melody in measure 4 is A5-G5-F#5-E5-D5-C5-B4-A4. The melody in measure 5 is H4-A4-B4-C5-D5-E5-F#5-G5-A5-B5-C6. The melody in measure 6 is A5-G5-F#5-E5-D5-C5-B4-A4. The melody in measure 7 is H4-A4-B4-C5-D5-E5-F#5-G5-A5-B5-C6. The melody in measure 8 is A5-G5-F#5-E5-D5-C5-B4-A4. The melody in measure 9 is H4-A4-B4-C5-D5-E5-F#5-G5-A5-B5-C6. The melody in measure 10 is A5-G5-F#5-E5-D5-C5-B4-A4. The melody in measure 11 is H4-A4-B4-C5-D5-E5-F#5-G5-A5-B5-C6. The melody in measure 12 is A5-G5-F#5-E5-D5-C5-B4-A4. The melody in measure 13 is H4-A4-B4-C5-D5-E5-F#5-G5-A5-B5-C6. The melody in measure 14 is A5-G5-F#5-E5-D5-C5-B4-A4. The melody in measure 15 is H4-A4-B4-C5-D5-E5-F#5-G5-A5-B5-C6. The melody in measure 16 is A5-G5-F#5-E5-D5-C5-B4-A4.

Hmaj7

D7

Gmaj7

Bb7

Ebmaj7

Am7

D7

Gmaj7

