

1 **Taking the beat of the Arctic: are lemming population cycles**

2 **changing due to winter climate?**

3

4 **Running title: Lemming population cycles and winter climate**

5

6 **Gilles Gauthier^{1,*}, Dorothée Ehrich^{2,*}, Maria Belke-Brea³, Florent Domine⁴, Ray**

7 **Alisauskas⁵, Karin Clark⁶, Frauke Ecke⁷, Nina E. Eide⁸, Erik Framstad⁸, Jay Frandsen⁹,**

8 **Olivier Gilg¹⁰, Heikki Henttonen¹¹, Birger Hörnfeldt¹², Gennadiy D. Kataev¹³, Irina E.**

9 **Menyushina¹⁴, Lauri Oksanen¹⁵, Tarja Oksanen¹⁵, Johan Olofsson¹⁶, Gustaf Samelius¹⁷,**

10 **Benoit Sittler¹⁸, Paul A. Smith¹⁹, Aleksandr A. Sokolov²⁰, Natalia A. Sokolova²⁰, Niels M.**

11 **Schmidt^{21,*}**

12

13 ¹Department of Biology and Centre d'études nordiques, Université Laval; Québec city, Québec,
14 Canada.

15 ²Department of Arctic and Marine Biology, UiT-The Arctic University of Norway; Tromsø,
16 Norway.

17 ³Department of geography, Takuvik Joint International Laboratory and Centre d'études
18 nordiques; Université Laval, Québec city, Québec, Canada.

19 ⁴Department of Chemistry, Takuvik Joint International Laboratory and Centre d'études
20 nordiques; Université Laval, Québec city, Québec, Canada and CNRS-INSU, Paris, France.

- 21 ⁵Wildlife Research Division, Environment and Climate Change Canada; Saskatoon,
22 Saskatchewan, Canada.
- 23 ⁶Environment and Natural Resources, Government of Northwest Territories; Yellowknife,
24 Northwest Territories, Canada.
- 25 ⁷Department of Wildlife, Fish, and Environmental Studies, Swedish University of Agricultural
26 Sciences; Umeå, Sweden, and Faculty of Biological and Environmental Sciences, University of
27 Helsinki; Helsinki, Finland.
- 28 ⁸Norwegian Institute for Nature Research; Trondheim/Oslo, Norway.
- 29 ⁹Parks Canada; Kingmingya, Inuvik, Northwest Territories, Canada.
- 30 ¹⁰UMR 6249 Chrono-Environnement, CNRS, Université de Bourgogne Franche-Comté, and
31 Groupe de recherche en Écologie Arctique; Francheville, France.
- 32 ¹¹Natural Resources Institute Finland; Helsinki, Finland.
- 33 ¹²Department of Wildlife, Fish, and Environmental Studies, Swedish University of Agricultural
34 Sciences; Umeå, Sweden.
- 35 ¹³Laplandskiy Nature Reserve; Monchegorsk, Murmansk Region, Russia.
- 36 ¹⁴Retired; Moscow, Russia.
- 37 ¹⁵Department of Arctic and Marine Biology, UiT - The Arctic University of Norway; Alta,
38 Norway; and Department of Biology, Section of Ecology; University of Turku, Turku, Finland.
- 39 ¹⁶Department of Ecology and Environmental Science, Umeå University; Umeå, Sweden.

40 ¹⁷Snow Leopard Trust; Seattle, USA.

41 ¹⁸Chair for Nature Conservation and Landscape Ecology, University of Freiburg; Freiburg,
42 Germany, and Groupe de recherche en Écologie Arctique; Francheville, France.

43 ¹⁹Wildlife Research Division, Environment and Climate Change Canada; Ottawa, Ontario,
44 Canada.

45 ²⁰Arctic Research Station of Institute of Plant and Animal Ecology, Ural Branch, Russian
46 Academy of Sciences; Labytnangi, Russia.

47 ²¹Department of Ecoscience and Arctic Research Centre, Aarhus University; 4000 Roskilde,
48 Denmark.

49

50 * These authors contributed equally as lead authors.

51

52 Corresponding author: Gilles Gauthier (Tel: +1-418-952-4546; Email:

53 gilles.gauthier@bio.ulaval.ca)

54

55 **Abstract**

56 Reports of fading vole and lemming population cycles and persisting low populations in some
57 parts of the Arctic have raised concerns about the spread of these fundamental changes to tundra
58 food web dynamics. By compiling 24 unique time series of lemming population fluctuations
59 across the circumpolar region, we show that virtually all populations displayed alternating
60 periods of cyclic/non-cyclic fluctuations over the past four decades. Cyclic patterns were
61 detected 55% of the time (N = 649 years pooled across sites) with a median periodicity of 3.7
62 years and non-cyclic periods were not more frequent in recent years. Overall, there was an
63 indication for a negative effect of warm spells occurring during the snow onset period of the
64 preceding year on lemming abundance. However, winter duration or early winter climatic
65 conditions did not differ on average between cyclic and non-cyclic periods. Analysis of the time
66 series shows that there is presently no Arctic-wide collapse of lemming cycles, even though
67 cycles have been sporadic at most sites during the last decades. Although non-stationary
68 dynamics appears a common feature of lemming populations also in the past, continued warming
69 in early winter may decrease the frequency of periodic irruptions with negative consequences for
70 tundra ecosystems.

71 **Keywords:** population dynamics, small mammals, transient dynamics, climate warming, Arctic
72 tundra, melt-freeze events

73

74 **1. Introduction**

75 Small mammals play a key role in terrestrial ecosystems through numerous linkages with their
76 forage plants and predators [1-3]. In species-poor systems, such as boreal, Arctic and alpine
77 ecosystems, fluctuations in small mammal populations can regulate trophic dynamics of a
78 significant part of the ecosystem and are crucial to maintain biodiversity of the predator guild
79 and of plant communities [3-6]. Warming climate at high latitudes has a strong potential to
80 disrupt these trophic dynamics especially through changes in snow conditions [7,8]. For instance,
81 changing snow depth can alter predation rate of snowshoe hares (*Lepus americanus*) and disrupt
82 the cyclic dynamics of this food web [9].

83 Lemmings (*Lemmus* spp. and *Dicrostonyx* spp.) are the most common small rodents of the
84 Arctic tundra and are well known for their large population fluctuations, typically with 3 to
85 5-year periodicities [10,11]. Their population fluctuations have become classic textbook
86 examples of animal population cycles, the causes of which having generated intense debates (see
87 e.g. [11,12]), although an emerging consensus points toward delayed density-dependence
88 governed by trophic interactions [13,14]. Cyclicity of lemming populations, however, appears
89 more variable than generally believed as some populations have been found to be non-cyclic or
90 with irregular fluctuations [5,15,16]. In recent decades, major changes in the dynamics of small
91 mammal populations have been reported in northern Europe [1,17], and lemming populations
92 that were previously described as being cyclic have dampened to no or very weak cycles in
93 Greenland and Fennoscandia [18,19], a phenomenon coinciding with climate warming. Despite
94 limited empirical evidence at large spatial scale, fading lemming cycles due to warmer winters,
95 with dramatic consequences for charismatic predators and the functioning of the food web, have
96 been used as a prime example of climate change impacts on the Arctic wildlife [20].

97 Lemmings are adapted to the harsh arctic climate and can breed during the long winters
98 under the snow [21]. Most periodic lemming irruptions depend on high breeding activity in
99 winter [22], and there is evidence that changing snow conditions may be linked to the collapse of
100 lemming and vole populations at certain sites [18,19,23]. During winter, lemmings live in the
101 soft depth hoar that typically forms at the base of the snowpack under a layer of dense, wind-
102 compacted snow [24]. A hardened basal snow layer due to melt-freeze cycles or rain-on-snow
103 events in early winter reduces thermal insulation, may increase the cost of locomotion and limits
104 access to subnivean food plants throughout the snow season for lemmings [25]. The period of
105 snow onset in early winter is especially critical as it may largely determine the thickness, density
106 and hardness of the depth hoar layer for the rest of the winter [8,26]. Reduced duration of snow
107 cover could also be detrimental to lemmings by shortening how long snow offers protection from
108 predators [19,27]. Rapidly increasing temperatures in the Arctic [28,29] can profoundly change
109 physical properties and duration of the snowpack, thereby negatively affecting lemming
110 populations [8,30].

111 We present the largest circumpolar analysis of lemming populations ever conducted based
112 on 24 time series from 20 high-latitude sites (figure 1, electronic supplementary material, table
113 S1) where we examine recent changes in their population dynamics. Lemming time series were
114 carefully selected from [31] to retain only high-quality datasets among those available across the
115 Arctic region and the Fennoscandian oroarctic mountain areas (see electronic supplementary
116 Material and Methods). We first determined the prevalence of lemming population cycles across
117 the circumarctic, their dominant periodicity, and the temporal stability of cyclic fluctuations. We
118 further examined whether climatic conditions during winter could be important environmental
119 drivers of change in lemming population dynamics across the circumarctic region, as

120 documented at the local scale [18,19]. We tested two specific hypotheses related to winter
121 climatic conditions. First, warm temperature during the period of snow onset and shortly after
122 should promote melt-freeze and rain-on-snow events, which will lead to a hard basal layer in the
123 snowpack [32,33]. We hypothesized that a hardened snowpack caused by these early winter
124 events should reduce access to subnivean food and impede lemming reproduction, thereby
125 limiting population growth and reducing their abundance (*Early winter climate* hypothesis; [8]).
126 Second, shorter winters should limit population growth and densities the following summer by
127 reducing the duration of subnivean reproduction and the period that snow cover protects
128 lemmings from several predators (*Winter duration* hypothesis; [19]).

129 **2. Material and methods**

130 **(a) Lemming data**

131 The lemming data used in this study were a subset of the population time series assembled from
132 49 sites across the circumarctic by [31]. We extracted from this dataset the 24 time series (from
133 20 sites; some sites had data for two different lemming species) that met the following criteria:
134 (i) they were at least 20 years in length, (ii) data were collected each year during the period 2001
135 to 2019, (iii) they had a continuous annual record without any gap (in two cases data were
136 missing for one year: Aulavik in 2017 and Åmotsdalen in 2018), and (iv) they used a consistent
137 sampling method with adequate sampling effort throughout the study period. We excluded one
138 series from southern Sweden (Vålådalen/Ljungdalen) where the lemming index was always very
139 low except for one year (2011). The criteria applied to select the 24 lemming time series ensured
140 that we had the datasets of highest quality for our analyses among those compiled by [31] and
141 available for this key group of species across the circumpolar tundra areas. The time series that
142 we retained used different methods to estimate lemming abundance (electronic supplementary

143 material, table S1) but all of these methods were shown to be adequate to monitor lemming
144 population fluctuations [34]. Another line of evidence for that is provided by the abundance of
145 specialized lemming predators, which are known to track local lemming abundance very well. At
146 all sites ($n = 9$) where lemming and predator abundance were both monitored, a remarkable
147 concordance between the two was found [4,5,35-40]. See electronic supplementary Material and
148 Methods and table S2 for details on the methods used to sample lemming abundance and
149 sampling effort.

150 **(b) Wavelet analysis and cyclic pattern**

151 To assess the cyclicity of the lemming time series and possible transient dynamics, we carried
152 out wavelet analyses [41]. Time series were transformed to $\log(\text{abundance index} + 1)$ [10],
153 except qualitative indices (see electronic supplementary Material and Methods for justification),
154 and the wavelet power spectrum was calculated using the function *analyze.wavelet* of the
155 package WaveletComp [42] in R vers. 4.1.3 [43]. The function *analyze.wavelet* applies the
156 Morlet wavelet. We used the option to detrend the time series and the default value of 0.75 for
157 the parameter *loess.span* that determines the degree of smoothing. The significance of periodicity
158 at each time point was assessed from 10,000 simulations and power spectrums were plotted as
159 heat maps showing the contour of significant periods. We used a 0.1 significance level to
160 confirm the presence of cyclic patterns to minimize the risk of inferring the absence of cyclicity
161 in presence of a weak signal. It is also with this significance level that periods of cyclicity that
162 we detected matched most closely those found in previous site-specific analyses at Bylot Island
163 and Finse [18,44,45]. For each time series, we extracted (i) the time over which cyclicity was
164 identified excluding years that were outside the cone of influence, and (ii) the periodicity with
165 the highest wavelet power for each year. Mean periodicity was calculated over all time periods in

166 a series for which periodicity was determined to be significant. See electronic supplementary
167 Material and Methods for more details on calculations.

168 **(c) Climate data**

169 We used temperature data from the ERA5-Land Reanalysis Dataset [46]. This dataset provides
170 hourly temperature data at 2m above the ground from 1981 to present at a resolution of 0.1°
171 across the globe (~9 km). We extracted temperature data for each of our 20 sites based on their
172 geographic coordinates at 6-h intervals.

173 We used MODIS snow products [47] (<http://nsidc.org/>) to assess timing of snow melt and
174 onset of snow at each site for the years 2000 to 2020 except at Kilpisjärvi where snow data was
175 not available. We aimed to delimit a polygon of ca 30 km² centered on trapping sites and in
176 relatively homogenous habitat at each study area to measure snow cover change but in many cases
177 we had to adjust polygon size based on local topography (e.g. to avoid high elevation area or large
178 lakes) or to cover all lemming monitoring plots at sites with multiple plots. Median size of the
179 polygons was 30 km² (range: 13 to 166 km²; electronic supplementary material, table S2). See
180 electronic supplementary Material and Methods for details on how the snow data was extracted
181 and for ground validation of snow variables.

182 We used the snow cover time series and temperature data, either alone or in combination, to
183 define six variables:

184 Date of snow melt (Melt50): First day in spring when snow cover was equal or less than 50% of
185 the polygon (see electronic supplementary material, figure S1b for an example). We
186 excluded from the calculations apparent early season melting events during which snow
187 cover fell below 50% but returned to cover 100% of the site surface for ≥ 5 consecutive days.

188 Similarly, we excluded late spring snow precipitation events when snow cover returned to
189 100% for ≤ 2 consecutive days.

190 Date of onset of permanent snow cover (Onset80): First day in autumn when snow cover reached
191 or exceeded 80% of the polygon and did not return below 50% at a later date (see electronic
192 supplementary material, figure S2a for an example).

193 Duration of the snow onset period (Onset_duration): Number of days elapsed between the last day
194 in autumn with a snow cover below 5% of the polygon and the date of onset of permanent
195 snow cover as defined above (Onset80; see electronic supplementary material, figure S2a
196 for an example)

197 Duration of winter (Winter_length) correspondrd to the period with snow and was defined as the
198 number of days elapsed between Onset80 and subsequent Melt50.

199 Warm spell during snow onset (Warm_onset): Cumulative number of degrees ≥ -2 °C (absolute
200 value) per period of 6-hour during the period of snow onset as defined above, i.e.
201 Onset_duration (see electronic supplementary material, figure S2b for an example). For
202 instance, a temperature of 2 °C for two 6-h period would yield a Warm_onset value of 8.

203 Warm spell after snow onset (Warm_postonset): Absolute value of the cumulative number of
204 degrees ≥ -2 °C per period of 6-hour during 30 days after the date of permanent snow onset
205 as defined above (see electronic supplementary material, figure S2b for an example).

206 Warm spells, as defined above, should promote melt-freeze or rain-on-snow events,
207 conditions known to be detrimental to lemmings (see introduction). We focused on the period of
208 snow onset and the first 30 days following snow onset because it is when the depth hoar of the
209 basal snow layer, where lemmings live throughout the winter, gets established. Melt-freeze or rain-
210 on-snow events during this period should have the greatest potential to disturb and harden the basal

211 snow layer [33,48]. We chose a threshold of $-2\text{ }^{\circ}\text{C}$ rather than $0\text{ }^{\circ}\text{C}$ because snow temperature
212 below the snow surface during daytime is often greater than air temperature due to the absorption
213 of solar radiation. Based on equations derived by [49], we evaluated that snowmelt can take place
214 under sunny conditions when the air temperature is at -2°C or above even at high latitudes in early
215 winter. Since this radiative warming can propagate to depths of at least 10 cm [49], the whole, thin
216 early winter snowpack can be affected by such melt-freeze events. However, our conclusions are
217 not strongly affected by this threshold because repeating the analyses with a threshold value of
218 $0\text{ }^{\circ}\text{C}$ rather than $-2\text{ }^{\circ}\text{C}$ to calculate cumulative number of degrees yielded similar results
219 qualitatively but with smaller effects and wider credible intervals (results not shown).

220 **(d) Analyses relating lemming abundance and cyclicity parameters to climate data**

221 First, we investigated the relationships between lemming abundance indices and climate during
222 the previous winter over the period 2000-2020 using a state space model that allowed us to take
223 into account the stochastic sampling variability in each time series. Different observation models
224 were used depending on the observation method used at each site. Snap trapping data, consisting
225 of number of individuals trapped during a certain number of trap nights, were modelled as a
226 Poisson process. Variations in the number of traps used over the years were taken into account as
227 a multiplicative factor. A similar observation model was used for winter nest counts and
228 incidental observations, where variation in the area over which nests were counted or the total
229 number of observation hours were taken into account as a multiplicative factor. For time series
230 resulting from statistical analyses and integrating several sources of data (Bylot Island, Karupelv
231 Valley), sampling variability was modelled with a normal distribution around the mean.
232 Sampling variability of qualitative time series was also modelled as a Poisson process. The
233 process model consisted of a log-linear autoregressive model of order two, a model structure that

234 has been used in numerous studies of cyclic small rodent populations (e.g. [10,50]), and included
235 additional terms representing the possible influence of winter climate on annual population
236 growth as follows:

$$237 \quad X_{i,t} = a0_i + a1_i \cdot X_{i,t-1} + a2_i \cdot X_{i,t-2} + b \cdot win_{i,t} + e$$

238 Where $X_{i,t}$ is the log of lemming abundance in site i at time t , $a0_i$ is a constant specific to
239 the site, $a1_i$ and $a2_i$ are the first and second order autoregressive coefficients (also site specific),
240 b represents coefficients for the effect of variables (win) describing site specific conditions in the
241 winter preceding summer of year t (win varied between different versions of the model), and e is
242 a normally distributed error term. The coefficients of the autoregressive part of the model (a
243 coefficients) were modelled as site specific random effects with a global mean. The state space
244 model was implemented in a Bayesian framework (see electronic supplementary Material and
245 Methods for details and the model script).

246 We built three variants of the model with different combinations of winter variables
247 corresponding to our two hypotheses: an early winter climate model with variables Warm_onset
248 and Warm_postonset, a winter duration model with variable Winter_length, and an early winter
249 climate + winter duration model (all 3 variables). These three climatic variables were not
250 strongly correlated (Pearson $r < |0.3|$; electronic supplementary material, table S3). Because of
251 the clear differences in winter climate between the distribution area of *Lemmus lemmus* and that
252 of other lemming species (see electronic supplementary Material and Methods for details) and
253 some differences in average winter climate among other regions, analyses were carried out using
254 both relative climate data and absolute climate data, both scaled to 0 mean and standard
255 deviation of 1 to make effects comparable. Relative values were calculated by subtracting the
256 mean at each site from annual values.

257
258 Second, we investigated whether the early winter climate and winter duration differed
259 between periods when the lemming populations were cyclic and when they were not according to
260 the wavelet analysis. We tested for mean differences using linear mixed effect models for each
261 climatic variable (response variable) with cyclicity (cyclic versus non-cyclic) and region
262 (Fennoscandia versus the rest of the Arctic) as fixed effects and times series ID as random effect
263 in the package glmmTMB. For each variable, fixed effects were modelled as additive or as
264 interactive effects. The preferred model was selected with AICc and models that differed by less
265 than 2 in AICc values were considered competitive [51]. Possible temporal autocorrelation of
266 climatic variables was assessed by plotting autocorrelation functions for each site, but no
267 significant pattern was detected (data not shown).

268 It is also possible that high variability of early winter climate and winter duration, rather
269 than mean sub-optimal conditions, leads to periods without lemming cycles. To address this
270 hypothesis, we calculated the standard deviation of each climatic variable for cyclic and non-
271 cyclic periods in each time series. As above, we tested for significant differences in standard
272 deviations for each response variable using linear mixed models.

273 **3. Results**

274 **(a) Cyclicity patterns in lemming populations**

275 The 20 sites with time series of lemming population fluctuations covered the circumarctic region
276 with 8 time series located in Canada (5 sites), 2 in Greenland (2 sites), 4 in Russia (3 sites) and
277 10 in Fennoscandia (10 sites; electronic supplementary material, tables S1, S2). Individual time
278 series ranged from 19 to 91 years (median length: 26 years) and included several lemming
279 species: Norwegian lemmings (*Lemmus lemmus*) in Fennoscandia as well as *Dicrostonyx* spp.

280 and other *Lemmus* species at the other sites. Wavelet analysis revealed that all 24 lemming time
281 series except one (*Lemmus* at Daring Lake) showed statistically supported cyclicity in population
282 fluctuations, though in a few cases the cyclic period was short and the pattern rather unclear (e.g.
283 Zackenberg, Stora Sjøfallet; figure 1, electronic supplementary material, figure S3). However, a
284 cyclic pattern was found to be present throughout the study period at only 3 sites, Wrangel
285 Island, Aulavik (*Lemmus* and *Dicrostonyx* combined at these two sites) and Bylot Island
286 (*Lemmus* only), whereas cyclic patterns disappeared for significant length of time in all other
287 time series (figure 2, electronic supplementary material, table S4).

288 When considering only years within the cone of influence of the wavelet analyses, 356
289 study years (all sites pooled) out of 649 (55%) were assigned to cyclic periods (median
290 periodicity: 3.7 years). Disappearance of cycles occurred at different times across sites and there
291 was no evidence that such disappearance was more common in recent years (figure 2, electronic
292 supplementary material, figure S4). Periods with absence of cycles occurred across all lemming
293 taxa (*Lemmus lemmus*, other *Lemmus*, *Dicrostonyx* spp). At five sites (Joatka, Kilpisjärvi,
294 Laplandskiy and Finse for *L. lemmus*; Karrak Lake for *Dicrostonyx*), cycles were discontinuous
295 as they disappeared for some time and reappeared later (Figs. 1 and 2). There was as much
296 variability in patterns of population fluctuations within as between lemming taxa and geographic
297 regions (Fennoscandia, Russia and North America; figure 1, electronic supplementary material,
298 figure S3).

299 **(b) Climatic influence on lemming population fluctuations**

300 Our analysis of lemming abundance indices in response to climatic variables suggested an
301 influence of early winter climate when using relative climatic variables, in agreement with our
302 early winter climate hypothesis, but not of winter duration (figure 3). The results from the three

303 models were congruent and indicated a negative effect of Warm_onset (-0.183 and -0.174 for the
304 early winter climate model and the early winter climate + winter duration model respectively) on
305 lemming abundance indices. However, given the high degree of stochasticity inherent to this
306 type of data, posterior credible intervals (CI) were wide and 95% CI included 0 (-0.402, 0.034
307 for the early winter climate model and -0.397, 0.049 for the early winter climate + winter
308 duration model; figure 3). The mean posterior estimates for Warm_postonset were also negative
309 but indicated a smaller influence (-0.142 and -0.159, respectively) and the 95% CI also
310 overlapped 0 (figure 3). The analyses suggested no influence of winter duration with 50% CI
311 largely overlapping 0. As expected due to clear regional differences in average climate, the
312 effects were less clear when using absolute climatic variables, but showed the same overall
313 tendencies (electronic supplementary material, figure S5). All models also revealed congruent
314 direct and delayed density dependence responses. The mean estimate for the autoregressive
315 parameter for direct density dependence (i.e. direct density dependence parameter in a population
316 model +1) was between -0.055 and -0.047 (lower 95% CI: -0.194 to -0.189, higher 95% CI:
317 0.090 to 0.101) and the estimate for delayed density dependence was between -0.408 and -0.395
318 (lower and higher 95% CI: -0.543 to -0.522 and -0.262 to -0.247, respectively).

319 We examined whether early winter climate and winter duration differed on average
320 between cyclic and non-cyclic periods in the lemming time series. However, we found no
321 significant difference in climatic variables between periods with and without lemming cycles as
322 identified by wavelet analysis, both for relative and absolute climatic variables and for the two
323 main biogeographic groups of lemmings (figure 4, electronic supplementary material, figure S6).
324 We also examined annual variability in climatic variable between cyclic and non-cyclic periods.
325 Standard deviations of warm weather following the onset of snow (Warm_postonset) were on

326 average higher ($\beta = 12.3$, 95% CI = 1.9, 22.6) during periods with absence of lemming cycles
327 than during cyclic periods (figure 4, electronic supplementary material, figure S6).

328 **4. Discussion**

329 Our large-scale analysis of lemming dynamics revealed the generality of their cyclic population
330 fluctuations, with a periodicity of 3-4 years most frequently detected despite variation among
331 sites (electronic supplementary material, table S4). More importantly, however, non-cyclic
332 periods were observed in almost all time series, strongly suggesting that cyclicity is a dynamic
333 process in lemmings and that alternating periods of cyclic and non-cyclic fluctuations is common
334 throughout their range. This was also the case for the longest time series ranging from 45 to 91
335 years originating from sub-Arctic Fennoscandia. Moreover, these non-cyclic periods did not
336 occur synchronously and were not more prevalent in recent years. Therefore, our data do not
337 provide evidence that the fading and collapse of lemming cycles recently reported at some sites
338 [5,18,19] is at present a general phenomenon across the whole Arctic tundra despite repeated
339 suggestions to that effect [52-55]. We recognize, however, the temporal limitation of our dataset,
340 with relatively few series preceding the 1990s.

341 Angerbjörn et al. [16] suggested that episodes of interrupted cyclicity could in fact be low
342 amplitude fluctuations that are not detected by population monitoring (for instance, see Karupelv
343 Valley in recent years, figure 1). This may be especially the case with snap trapping data series
344 or when lemmings are trapped in suboptimal habitats where they may be present only in high
345 density years, as sometimes is the case in Fennoscandia. It is also possible that the large variation
346 in monitoring methods may have reduced the precision of our analysis. However, we note that
347 non-cyclic periods were detected across all the monitoring methods used in this study. Moreover,
348 the key role of lemmings in the tundra food web, either as a driver of predator reproductive

349 success or in impacting tundra vegetation, depends on their populations reaching high absolute
350 densities periodically. Low amplitude fluctuations, such as those observed in several datasets
351 during non-cyclic periods (figure 1 and electronic supplementary material, figure S3), cannot
352 fulfil this role [3,35,56].

353 It remains unclear if the transient dynamics of lemming population fluctuations that we
354 document results from external forcing. Winter climate has been invoked to explain the
355 disappearance of lemming population cycles at some sites. In Greenland, [19] showed that a
356 reduction in the duration of the snow cover due to climate warming could dampen population
357 fluctuations by reducing breeding performance and increasing the period of exposure of
358 lemmings to predators. However, our results do not support this as a general hypothesis as we
359 found no evidence that the duration of the snow cover affects lemming abundance during the
360 following summer at the circumarctic scale. A possible explanation may be that the predator
361 community or the relative importance of predators vs. other factors in driving lemming
362 population fluctuations vary across sites [23].

363 In Fennoscandia, some studies have linked the disappearance of lemming cycles to
364 changing snow conditions in early winter or to warm spells in winter leading to melt-freeze or
365 rain-on-snow events [18,22]. We found support for this hypothesis at the circumarctic scale since
366 the abundance of lemmings was reduced in years following a high occurrence of warm spells
367 with alternating periods of melt and freeze in early winter (i.e. our *Early winter climate*
368 hypothesis). Presence of melting and/or rain-on-snow events during this period should hamper
369 the formation of a soft basal depth hoar in the snowpack, which is detrimental to lemmings
370 [8,33,57]. Presence of such conditions could prevent lemmings from reaching peak densities and
371 potentially lead to highly variable dynamics with irregular peaks. However, the occurrence of

372 warm spells in early winter did not differ on average between periods of cyclic and non-cyclic
373 lemming fluctuations in Fennoscandia, where winter climate is the warmest (electronic
374 supplementary material, figure S7), as well as in other regions of the Arctic.

375 A climate-induced transition from cyclic to non-cyclic dynamics may not be a one-time
376 event but rather may take place over a transient period during which populations alternate
377 between these two regimes in response to climate variability [58]. For periodic population peaks
378 to occur, weather during the pre-peak increase winter appears crucial. A stochastic occurrence of
379 good and bad winters may thus potentially create alternating periods with cyclic and non-cyclic
380 dynamics. Considering that most of our time series started in the 1990s and covered a period
381 when global warming was already impacting the Arctic [28,29,59], the existing time series
382 provide little information to fully investigate this hypothesis. Our observation that increased
383 interannual variability in the occurrence of warm spells following the snow onset was
384 characteristic of periods when cycles disappeared lends support to this hypothesis. However, we
385 note that the transient nature of lemming cycles had been documented based on qualitative data
386 or fur returns of predators for more than a century in Fennoscandia [16,60], before the beginning
387 of global warming. For other parts of the Arctic, previous analyses using the sparse data
388 available suggested varying patterns [54] except for the classic 65-year series of regular cycles
389 based on fox returns in Canada [61].

390 Environmental stochasticity modulated by the prevailing climatic regime rather than
391 climate warming per se has been suggested to explain the temporary disappearance of vole
392 population cycles in Finland [62,63]. Other environmental changes leading to increased
393 predation or altered food availability have also been suggested for voles in boreal Sweden [64].
394 Interestingly, [65] reported the occurrence of transient dynamics in a simple planktonic predator-

395 prey system maintained in a stable microcosm as long periods of cyclic oscillations were
396 interspersed by shorter periods characterized by irregular population fluctuations. In this case,
397 the temporary disappearance of cycles was solely due to internal stochastic processes. There is
398 also evidence from modelling work in small mammals that cycles can change or even disappear
399 and reappear solely due to the internal dynamics of the system, even if the environment remains
400 constant [66].

401 Although our comprehensive analysis of climate impact on lemming population dynamics
402 is the most geographically extensive study so far, we recognize that it is still spatially restricted
403 with respect to the vast circumpolar range of lemmings. In particular, we lacked good quality
404 time series for a large portion of Russia and, to a lesser extent, North America, potentially
405 limiting the generality of our conclusions. Second, even though our analytical method accounted
406 for heterogeneity in observation error, we had to fit the same model structure to all datasets.
407 However, considering that data came from a mix of field methods, species with potentially
408 different ecology, and different ecosystem contexts, it is likely that our model did not fit all time
409 series equally well. For *Lemmus lemmus*, for instance, it has been suggested that a phase-specific
410 density dependent model could be more adequate [10]. Our parameter estimates, aiming at a
411 general picture, thus represent a rather bold averaging of complex ecological processes, but they
412 still provide indications of climatic effects on lemming populations. Finally, we had to use crude
413 proxies of snow conditions based on remote sensing and Reanalysis Datasets at a relatively large
414 spatial scale ($\sim 30 \text{ km}^2$) due to the lack of ground measurements at most sites. This limited the
415 precision of our snow data, and potentially our ability to uncover relationships between lemming
416 abundance and snow measurements, but it was the best we could do given data availability.
417 Future studies should aim to collect in situ snow measurements (e.g., snow density or hardness,

418 see [67]) or develop snow models capable of predicting specific arctic snow properties at a
419 relevant spatiotemporal scale [68] to determine more precisely how snow conditions can explain
420 temporal variations in lemming population dynamics as suggested by our analysis.

421 **5. Conclusion**

422 Climate warming is already impacting tundra food webs in several ways [59]. Even though
423 this appears to have led to large scale dampening of small mammal population fluctuations in
424 boreal regions [1], we found no clear evidence yet that this is affecting the cyclic dynamics of
425 cold-adapted lemmings globally across the circumarctic tundra. Nonetheless, our study adds to
426 the growing evidence that winter climate and especially snow conditions strongly affect
427 population fluctuations of small mammals at high latitudes [8,18,23,63]. Therefore, future
428 climate warming has the potential to destabilize some populations, such as those found in the
429 warmest climate, although the magnitude of these effects could depend on biotic mechanisms
430 driving local population dynamics [23]. However, the transient nature of lemming population
431 cycles documented here makes it difficult to reach definitive conclusions regarding climatic
432 effects on cyclic dynamics. Indeed, ecological systems characterized by cyclic dynamics are
433 prone to prolonged transient behavior [58] and determining whether non-stationary dynamics is
434 due to internal processes or external forcing such as climate warming is inherently difficult. A
435 comparative approach based on continued long-term monitoring of lemming populations at sites
436 with contrasting climatic regime is essential to resolve these issues in the future but may not be
437 sufficient. Well planned studies examining the links between winter climate and lemming
438 demographic parameters (reproduction, mortality) based on testable predictions and year-round
439 observational data of snow and lemmings are also needed to fully unravel the mechanisms

440 involved. Regardless, despite ongoing climate warming, so far lemming population cycles
441 remain and thereby still play their key ecological functions in the circumarctic tundra.

442 **Ethics.** All animal data used in this paper comes from datasets that had already been published
443 elsewhere (see details in tables S1 and S2). No new field data was collected during the
444 preparation of the paper.

445 **Data accessibility.** Data used in the study are provided as supplementary files
446 ('Gauthier_etal_lemmings_cyclicality.txt' and 'Gauthier_etal_lemmings_climate.txt'). The content
447 of each file is described in section 'Description of data files' in the electronic supplementary
448 material.

449 **Declaration of AI use.** We did not use AI-assisted technologies in creating this article.

450 **Authors' contributions.** GG, DE, NMS and FD conceptualized the research; everybody except
451 MBB and FD contributed original data; DE and MBB analyzed data; GG, DE, NMS and MBB
452 wrote the original draft; everybody reviewed and edited the paper.

453 **Competing interests.** All authors declare no conflict of interest.

454 **Funding.** This work was funded the Natural Sciences and Engineering Research Council of
455 Canada (GG), the ArcticNet Network of Centers of Excellence (GG), the Norwegian
456 Environment Agency (DE) and the Danish Environmental Protection Agency (NMS). See
457 electronic supplementary material, table S6 for site-specific funding sources.

458 **Acknowledgements.** We thank the European Center for Medium-Range Weather Forecast
459 (ECMWF) and the National Snow and Ice Data Center (NSIDC) for making temperature and
460 snow cover data openly accessible and Etienne Godin for his assistance in retrieving the ERA-5
461 temperature data.

462 **ORCID.** GG, 0000-0002-2624-3508; DE, 0000-0002-3028-9488; FD, 0000-0001-6438-6879;
463 FE, 0000-0003-4208-345X; NEE, 0000-0002-7645-3300; OG, 0000-0002-9083-4492; BH,
464 0000-0003-2529-0991; GS, 0000-0002-1067-9796; PAS, 0000-0001-9573-5218; AS, 0000-
465 0002-1521-3856; NS, 0000-0002-6692-4375; NMS, 0000-0002-4166-6218.

466 **References**

- 467 1. Cornulier T, Yoccoz NG, Bretagnolle V, Brommer JE, Butet A, Ecke F, Elston DA, Framstad
468 E, Henttonen H, Hörnfeldt B, et al. 2013 Europe-wide dampening of population cycles in
469 keystone herbivores. *Science* **340**, 63-66. (doi:10.1126/science.1228992).
- 470 2. Byrom AE, Craft ME, Durant SM, Nkwabi AJK, Metzger K, Hampson K, Mduma SAR,
471 Forrester GJ, Ruscoe WA, Reed DN, et al. 2014 Episodic outbreaks of small mammals
472 influence predator community dynamics in an east African savanna ecosystem. *Oikos* **123**,
473 1014-1024. (doi:10.1111/oik.00962).

- 474 3. Olofsson J, Oksanen L, Oksanen T, Tuomi M, Hoset KS, Virtanen R, Kyro K. 2014 Long-
475 term experiments reveal strong interactions between lemmings and plants in the
476 Fennoscandian highland tundra. *Ecosystems* **17**, 606-615. (doi:10.1007/s10021-013-9740-6).
- 477 4. Gilg O, Hanski I, Sittler B. 2003 Cyclic dynamics in a simple vertebrate predator-prey
478 community. *Science* **302**, 866-868. (doi:10.1126/science.108750).
- 479 5. Schmidt NM, Ims RA, Hoyer TT, Gilg O, Hansen LH, Hansen J, Lund M, Fuglei E,
480 Forchhammer MC, Sittler B. 2012 Response of an arctic predator guild to collapsing lemming
481 cycles. *Proceedings of the Royal Society - B Biological Sciences* **279**, 4417-4422.
482 (doi:10.1098/rspb.2012.1490).
- 483 6. Nystuen KO, Evju M, Rusch GM, Graae BJ, Eide NE. 2014 Rodent population dynamics
484 affect seedling recruitment in alpine habitats. *Journal of Vegetation Science* **25**, 1004-1014.
485 (doi:https://doi.org/10.1111/jvs.12163).
- 486 7. Boonstra R, Andreassen HP, Boutin S, Husek J, Ims RA, Krebs CJ, Skarpe C, Wabakken P.
487 2016 Why Do the Boreal Forest Ecosystems of Northwestern Europe Differ From Those of
488 Western North America? *Bioscience* **66**, 722-734. (doi:10.1093/biosci/biw080).
- 489 8. Domine F, Gauthier G, Vionnet V, Fauteux D, Dumont M, Barrere M. 2018 Snow physical
490 properties may be a significant determinant of lemming population dynamics in the high
491 Arctic. *Arctic Science* **4**, 813-826. (doi:10.1139/as-2018-0008).
- 492 9. Peers MJL, Majchrzak YN, Menzies AK, Studd EK, Bastille-Rousseau G, Boonstra R,
493 Humphries M, Jung TS, Kenney AJ, Krebs CJ, et al. 2020 Climate change increases predation
494 risk for a keystone species of the boreal forest. *Nature Climate Change* **10**, 1149-1153.
495 (doi:10.1038/s41558-020-00908-4).

- 496 10. Stenseth NC. 1999 Population cycles in voles and lemmings: density dependence and phase
497 dependence in a stochastic world. *Oikos* **87**, 427-461. (doi:10.2307/3546809).
- 498 11. Krebs CJ. 2013 *Population fluctuations in rodents*. Chicago, The University of Chicago Press.
- 499 12. Andreassen HP, Sundell J, Ecke F, Halle S, Haapakoski M, Henttonen H, Huitu O, Jacob J,
500 Johnsen K, Koskela E, et al. 2020 Population cycles and outbreaks of small rodents: ten
501 essential questions we still need to solve. *Oecologia* **195**, 601-622. (doi:10.1007/s00442-020-
502 04810-w).
- 503 13. Klemola T, Pettersen T, Stenseth NC. 2003 Trophic interactions in population cycles of voles
504 and lemmings: A model-based synthesis. *Advances in Ecological Research* **33**, 75-160.
- 505 14. Oli MK. 2019 Population cycles in voles and lemmings: state of the science and future
506 directions. *Mammal Review* **49**, 226-239. (doi:10.1111/mam.12156).
- 507 15. Reid DG, Krebs CJ, Kenney A. 1995 Limitation of collared lemming population growth at
508 low densities by predation mortality. *Oikos* **73**, 387-398. (doi: 10.2307/3545963).
- 509 16. Angerbjörn A, Tannerfeldt M, Lundberg H. 2001 Geographical and temporal patterns of
510 lemming population dynamics in Fennoscandia. *Ecography* **24**, 298-308. (doi:10.1034/j.1600-
511 0587.2001.240307.x).
- 512 17. Hörnfeldt B, Hipkiss T, Eklund U. 2005 Fading out of vole and predator cycles? *Proceedings*
513 *of the Royal Society - B Biological Sciences* **272**, 2045-2049. (doi:10.1098/rspb.2005.3141).
- 514 18. Kausrud KL, Mysterud A, Steen H, Vik JO, Ostbye E, Cazelles B, Framstad E, Eikeset AM,
515 Mysterud I, Solhoy T, et al. 2008 Linking climate change to lemming cycles. *Nature* **456**, 93-
516 97. (doi:10.1038/nature07442).

- 517 19. Gilg O, Sittler B, Hanski I. 2009 Climate change and cyclic predator-prey population
518 dynamics in the high Arctic. *Global Change Biology* **15**, 2634-2652. (doi:10.1111/j.1365-
519 2486.2009.01927.x).
- 520 20. Ims RA, Ehrich D, Forbes BC, Huntley B, Walker DA, Wookey PA, Berteaux D, Bhatt US,
521 Bråthen KA, Edwards ME, et al. 2013 Chapter 12. Terrestrial ecosystems. In *Arctic*
522 *Biodiversity Assessment: Status and trends in Arctic biodiversity* (ed. Meltofte H.), pp. 384-
523 440. Akureyri, Iceland, Conservation of Arctic Flora and Fauna.
- 524 21. Duchesne D, Gauthier G, Berteaux D. 2011 Habitat selection, reproduction and predation of
525 wintering lemmings in the arctic. *Oecologia* **167**, 967-980. (doi:10.1007/s00442-011-2045-
526 6).
- 527 22. Henttonen H, Kaikusalo A. 1993 Lemming movements. In *The biology of lemmings* (eds.
528 Stenseth N.C, Ims R.A.), pp. 157-186. London, Academic Press.
- 529 23. Fauteux D, Stien A, Yoccoz NG, Fuglei E, Ims RA. 2021 Climate variability and density-
530 dependent population dynamics: Lessons from a simple High Arctic ecosystem. *Proceedings*
531 *of the National Academy of Sciences* **118**, e2106635118. (doi:10.1073/pnas.2106635118).
- 532 24. Poirier M, Gauthier G, Domine F. 2019 What guides lemmings movements through the
533 snowpack? *Journal of Mammalogy* **100**, 1416-1426. (doi:10.1093/jmammal/gyz129).
- 534 25. Poirier M, Fauteux D, Gauthier G, Domine F, Lamarre JF. 2022 Snow hardness impacts
535 intranivean locomotion of arctic small mammals. *Ecosphere* **12**, e03835.
536 (doi:10.1002/ecs2.3835).
- 537 26. Domine F, Belke-Brea M, Sarrazin D, Arnaud L, Barrere M, Poirier M. 2018 Soil moisture,
538 wind speed and depth hoar formation in the Arctic snowpack. *Journal of Glaciology* **64**, 990-
539 1002. (doi:10.1017/jog.2018.89).

- 540 27. Bilodeau F, Gauthier G, Berteaux D. 2013 Effect of snow cover on the vulnerability of
541 lemmings to mammalian predators in the Canadian Arctic. *Journal of Mammalogy* **94**, 813-
542 819. (doi:10.1644/12-MAMM-A-260.1).
- 543 28. Chylek P, Folland C, Klett JD, Wang M, Hengartner N, Lesins G, Dubey MK. 2022 Annual
544 Mean Arctic Amplification 1970–2020: Observed and Simulated by CMIP6 Climate Models.
545 *Geophysical Research Letters* **49**, e2022GL099371.
546 (doi:https://doi.org/10.1029/2022GL099371).
- 547 29. Rantanen M, Karpechko AY, Lipponen A, Nordling K, Hyvärinen O, Ruosteenoja K, Vihma
548 T, Laaksonen A. 2022 The Arctic has warmed nearly four times faster than the globe since
549 1979. *Communications Earth & Environment* **3**, 168. (doi:10.1038/s43247-022-00498-3).
- 550 30. Bilodeau F, Gauthier G, Berteaux D. 2013 The effect of snow cover on lemming population
551 cycles in the Canadian High Arctic. *Oecologia* **172**, 1007-1016. (doi:10.1007/s00442-012-
552 2549-8).
- 553 31. Ehrich D, Schmidt NM, Gauthier G, Alisauskas R, Angerbjörn A, Clark K, Ecke F, Eide NE,
554 Framstad E, Frandsen J, et al. 2020 Documenting lemming population change in the Arctic:
555 Can we detect trends? *Ambio* **49**, 786-800. (doi:10.1007/s13280-019-01198-7).
- 556 32. Peeters B, Pedersen AO, Loe LE, Isaksen K, Veiberg V, Stien A, Kohler J, Gallet JC, Aanes
557 R, Hansen BB. 2019 Spatiotemporal patterns of rain-on-snow and basal ice in high Arctic
558 Svalbard: detection of a climate-cryosphere regime shift. *Environmental Research Letters* **14**,
559 015002. (doi:10.1088/1748-9326/aefb3).
- 560 33. Domine F, Taillandier AS, Cabanes A, Douglas TA, Sturm M. 2009 Three examples where
561 the specific surface area of snow increased over time. *The Cryosphere* **3**, 31-39.

- 562 34. Fauteux D, Gauthier G, Mazerolle, MJ, Coallier N, Bety J, Berteaux D. 2018 Evaluation of
563 Invasive and Non-Invasive Methods to Monitor Rodent Abundance in the Arctic. *Ecosphere*
564 **9**, 2124. (doi:10.1002/ecs2.2124).
- 565 35. Fufachev IA, Ehrich D, Sokolova NA, Sokolov VA, Sokolov AA. 2019 Flexibility in a
566 changing arctic food web: Can rough-legged buzzards cope with changing small rodent
567 communities? *Global Change Biology* **25**, 3669-3679.
568 (doi:https://doi.org/10.1111/gcb.14790).
- 569 36. Litvin KE, Ovsyanikov N. 1990 Dependence of the breeding and numbers of snowy owls and
570 polar fox on the lemming numbers in the Vrangal Island. *Zoologicheskyy Zhurnal* **69**, 52-64.
- 571 37. Therrien JF, Gauthier G, Korpimaki E, Bety J. 2014 Predation pressure by avian predators
572 suggests summer limitation of small-mammal populations in the Canadian Arctic. *Ecology*
573 **95**, 56-67. (doi:10.1890/13-0458.1).
- 574 38. Ruffino L, Oksanen T, Hoset KS, Tuomi M, Oksanen L, Korpimaki E, Bugli A, Hobson KA,
575 Johansen B, Makynen A. 2016 Predator-Rodent-Plant Interactions Along a Coast-Inland
576 Gradient in Fennoscandian Tundra. *Ecography* **39**, 871-883. (doi:10.1111/ecog.01758).
- 577 39. Samelius G, Alisauskas RT. 2017 Components of Population Growth for Arctic Foxes at a
578 Large Arctic Goose Colony: the Relative Contributions of Adult Survival and Recruitment.
579 *Polar Research* **36**, 6. (doi:10.1080/17518369.2017.1332948).
- 580 40. Landa A, Rød-Eriksen L, Ulvund KR, Jackson C, Thierry AM, Flagstad Ø, Eide NE. 2022
581 Conservation of the endangered Arctic fox in Norway - are successful reintroductions enough?
582 *Biological Conservation* **275**, 109774. (doi:https://doi.org/10.1016/j.biocon.2022.109774).

- 583 41. Cazelles B, Chavez M, Berteaux D, Menard F, Vik JO, Jenouvrier S, Stenseth NC. 2008
584 Wavelet analysis of ecological time series. *Oecologia* **156**, 287-304. (doi:10.1007/s00442-
585 008-0993-2).
- 586 42. Rösch A, Schmidbauer H. 2018 WaveletComp: Computational Wavelet Analysis. Version
587 1.1, R package.
- 588 43. CoreTeam. 2022 R: A language and environment for statistical computing. Vienna, Austria,
589 R Foundation for Statistical Computing.
- 590 44. Gauthier G, Bety J, Cadieux MC, Legagneux P, Doiron M, Chevallier C, Lai S, Tarroux A,
591 Berteaux D. 2013 Long-term monitoring at multiple trophic levels suggests heterogeneity in
592 responses to climate change in the Canadian Arctic tundra. *Philosophical Transactions of the*
593 *Royal Society B-Biological Sciences* **368**, 20482. (doi:10.1098/rstb.2012.0482).
- 594 45. Gruyer N, Gauthier G, Berteaux D. 2008 Cyclic dynamics of sympatric lemming populations
595 on Bylot Island, Nunavut, Canada. *Canadian Journal of Zoology* **86**, 910-917.
596 (doi:10.1139/Z08-059).
- 597 46. Muñoz Sabater J. 2019 ERA5-Land hourly data from 1981 to present. Available from
598 Copernicus Climate Change Service (C3S) Climate Data Store (CDS).
599 (doi:10.24381/cds.e2161bac)
- 600 47. Hall DK, Riggs G.A. 2016 MODIS/Terra Snow Cover Daily L3 Global 500m SIN Grid,
601 Version 6. September – December 2000 – 2020. Available from NASA National Snow and
602 Ice Data Center Distributed Active Archive Center
603 <https://doi.org/10.5067/MODIS/MOD10A1.006>

- 604 48. Domine F, Barrere M, Morin S. 2016 The Growth of Shrubs on High Arctic Tundra at Bylot
605 Island: Impact on Snow Physical Properties and Permafrost Thermal Regime. *Biogeosciences*
606 **13**, 6471-6486. (doi:10.5194/bg-13-6471-2016).
- 607 49. Colbeck SC. 1989 Snow-crystal Growth with Varying Surface Temperatures and Radiation
608 Penetration. *Journal of Glaciology* **35**, 23-29. (doi:10.3189/002214389793701536).
- 609 50. Bjørnstad ON, Falck W, Stenseth NC. 1995 A geographic gradient in small rodent density
610 fluctuations: a statistical modelling approach. *Proceedings of the Royal Society of London*
611 *Series B* **262**, 127-133.
- 612 51. Burnham KP, Anderson DR. 2002 *Model selection and multimodel inference : a practical*
613 *information-theoretic approach*. 2nd ed. New York, Springer.
- 614 52. Nolet BA, Bauer S, Feige N, Kokorev YI, Popov .Y, Ebbinge BS. 2013 Faltering lemming
615 cycles reduce productivity and population size of a migratory Arctic goose species. *Journal*
616 *of Animal Ecology* **82**, 804-813. (doi:10.1111/1365-2656.12060).
- 617 53. Fraser JD, Karpanty .M, Cohen JB, Truitt BR. 2013 The Red Knot (*Calidris canutus rufa*)
618 decline in the western hemisphere: is there a lemming connection? *Canadian Journal of*
619 *Zoology* **91**, 13-16. (doi:10.1139/cjz-2012-0233).
- 620 54. Aharon-Rotman Y, Soloviev M, Minton C, Tomkovich P, Hassell C, Klaassen M. 2015 Loss
621 of periodicity in breeding success of waders links to changes in lemming cycles in Arctic
622 ecosystems. *Oikos* **124**, 861-870. (doi:10.1111/oik.01730).
- 623 55. Kubelka V, Šálek M, Tomkovich P, Végvári Z, Freckleton RP, Székely T. 2018 Global pattern
624 of nest predation is disrupted by climate change in shorebirds. *Science* **362**, 680-683.
625 (doi:10.1126/science.aat8695).

- 626 56. Ims RA, Killengreen ST, Ehrich D, Flagstad O, Hamel S, Henden JA, Jensvoll I, Yoccoz NG.
627 2017 Ecosystem Drivers of an Arctic Fox Population at the Western Fringe of the Eurasian
628 Arctic. *Polar Research* **36**, 8. (doi:10.1080/17518369.2017.1323621).
- 629 57. Domine F, Barrere M, Sarrazin D. 2016 Seasonal evolution of the effective thermal
630 conductivity of the snow and the soil in high Arctic herb tundra at Bylot Island, Canada. *The*
631 *Cryosphere* **6**, 2573-2588. (doi:10.5194/tc-10-2573-2016).
- 632 58. Hastings A, Abbott KC, Cuddington K, Francis T, Gellner G, Lai YC, Morozov A, Petrovskii
633 S, Scranton K, Zeeman ML. 2018 Transient phenomena in ecology. *Science* **361**, eaat6412.
634 (doi:10.1126/science.aat6412).
- 635 59. Post E, Forchhammer MC, Bret-Harte MS, Callaghan TV, Christensen TR, Elberling B, Fox
636 AD, Gilg O, Hik D.S, Hoyer TT, et al. 2009 Ecological dynamics across the Arctic associated
637 with recent climate change. *Science* **325**, 1355-1358. (doi:10.1126/science.1173113).
- 638 60. Henden JA, Ims RA, Yoccoz NG. 2009 Nonstationary spatio-temporal small rodent dynamics:
639 evidence from long-term Norwegian fox bounty data. *Journal of Animal Ecology* **78**, 636-645.
640 (doi:10.1111/j.1365-2656.2008.01510.x).
- 641 61. Elton CS. 1924 Periodic Fluctuations in the Numbers of Animals: Their Causes and Effects.
642 *Journal of Experimental Biology* **2**, 119-163. (doi:10.1242/jeb.2.1.119).
- 643 62. Brommer JE, Pietiainen H, Ahola K, Karell P, Karstinen T, Kolunen H. 2010 The return of
644 the vole cycle in southern Finland refutes the generality of the loss of cycles through 'climatic
645 forcing'. *Global Change Biology* **16**, 577-586. (doi:10.1111/j.1365-2486.2009.02012.x).
- 646 63. Korpela K, Delgado M, Henttonen H, Korpimäki E, Koskela E, Ovaskainen O, Pietiainen H,
647 Sundell J, Yoccoz NG, Huitu O. 2013 Nonlinear effects of climate on boreal rodent dynamics:

- 648 mild winters do not negate high-amplitude cycles. *Global Change Biology* **19**, 697-710.
649 (doi:10.1111/gcb.12099).
- 650 64. Hörnfeldt B. 2004 Long-term decline in numbers of cyclic voles in boreal Sweden: analysis
651 and presentation of hypotheses. *Oikos* **107**, 376-392.
- 652 65. Blasius B, Rudolf L, Weithoff G, Gaedke U, Fussmann GF. 2019 Long-term cyclic
653 persistence in an experimental predator–prey system. *Nature* **577**, 226-230.
654 (doi:10.1038/s41586-019-1857-0).
- 655 66. Hanski I, Henttonen H. 1996 Predation on competing rodent species: A simple explanation of
656 complex patterns. *Journal of Animal Ecology* **65**, 220-232.
- 657 67. Poirier M, Gauthier G, Domine F, Fauteux D. 2023 Lemming winter habitat: the quest for
658 warm and soft snow. *Oecologia* **202**, 211-225. (doi:10.1007/s00442-023-05385-y).
- 659 68. Domine F, Picard G, Morin S, Barrere M, Madore JB, Langlois A. 2019 Major Issues in
660 Simulating Some Arctic Snowpack Properties Using Current Detailed Snow Physics Models:
661 Consequences for the Thermal Regime and Water Budget of Permafrost. *Journal of Advances
662 in Modeling Earth Systems* **11**, 34-44. (doi:https://doi.org/10.1029/2018MS001445).
- 663 69. Walker DA, Raynolds MK, Daniels FJA, Einarsson E, Elvebakk A, Gould WA, Katenin AE,
664 Kholod SS, Markon CJ, Melnikov ES, et al. 2005 The circumpolar vegetation map. *Journal
665 of Vegetation Science* **16**, 267-285. (doi:10.1111/j.1654-1103.2005.tb02365.x).

666

667

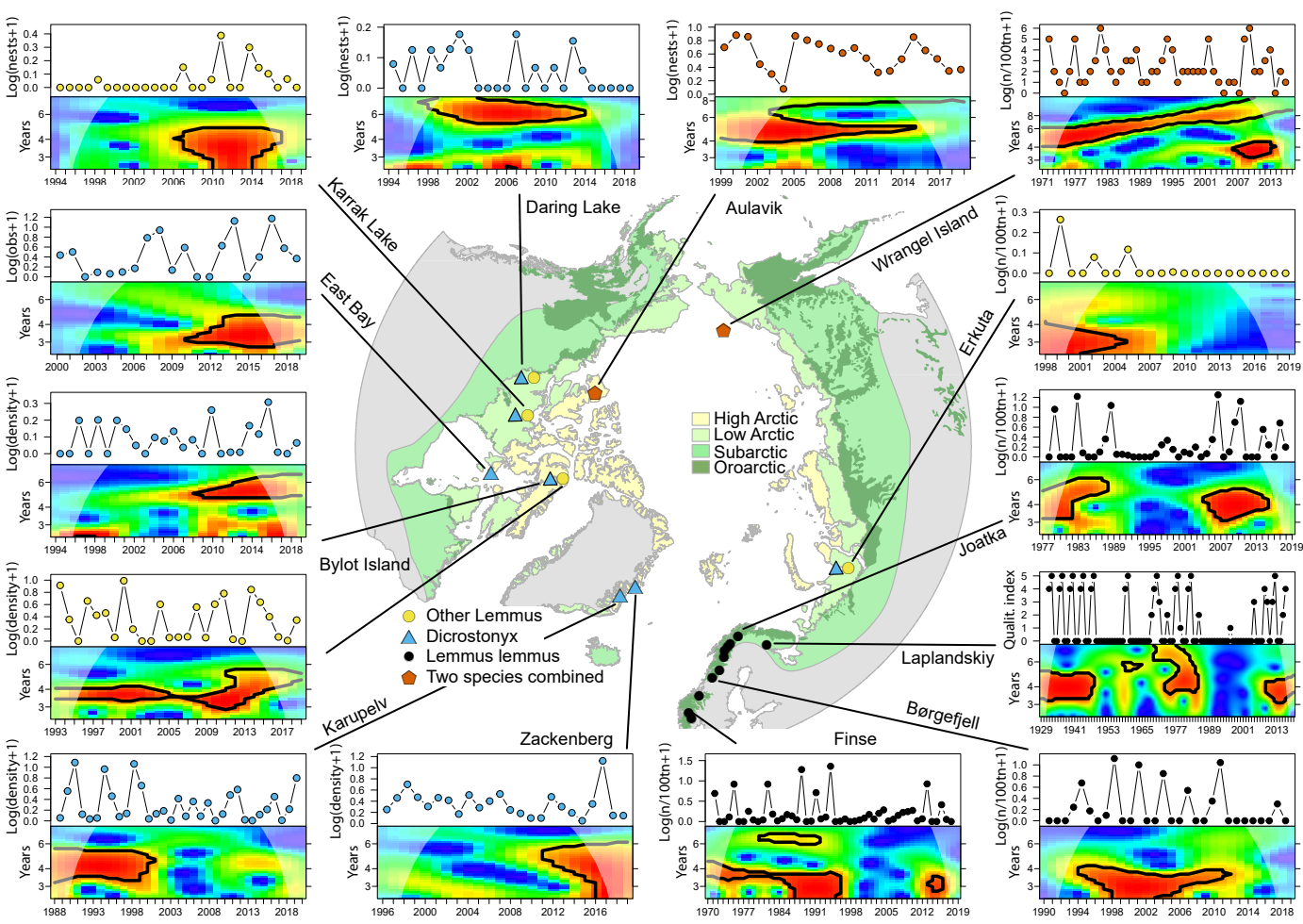
668 **Figure 1.** Lemming time series and map of the sites where they were collected. The colors on the
669 map show the bioclimatic subzones of the Arctic [69] and the Oroarctic. For 14 representative
670 time series, the log transformed abundance indices/estimates are shown (color codes on the time
671 series refer to the species) with results from the wavelet analysis underneath. The color palette
672 indicates the wavelet power levels from blue to red; red areas with black contour lines show
673 periods with evidence for cyclic dynamics, with the estimated periodicity shown on the y-axis.
674 The pale colors at either end of each wavelet plot are outside the cone of influence, an area
675 where results are subject to edge effects. See electronic supplementary material, figure S3 for
676 additional time series.

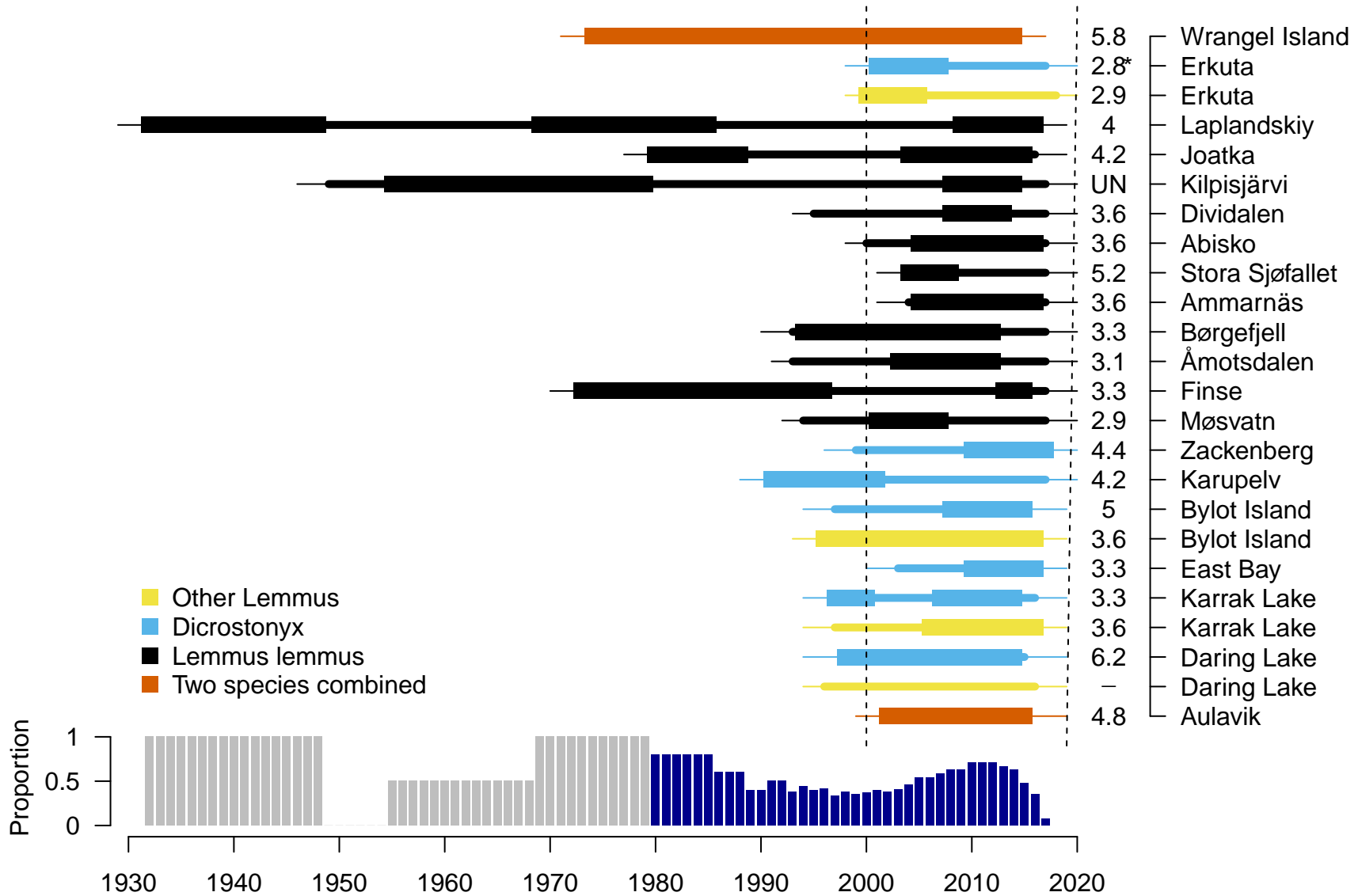
677 **Figure 2.** Temporal variation in cyclicity in 24 lemming time series. Thick lines show periods
678 when the time series were characterized as cyclic based on the wavelet analysis whereas thinner
679 lines indicate non-cyclic periods. The very thin lines at both ends of the series represent years
680 outside of the cone of influence. The dotted vertical lines indicate the range of years for which
681 climate data were available. The mean periodicity in years is shown for each time series that
682 exhibited cycles. * For *Dicrostonyx* in Erkuta, the periodicity with higher power is reported but
683 there was also a periodicity at 4.3 years; ‘UN’ for Kilpisjärvi, the periodicity could not be
684 determined. The bar plot at the bottom shows the proportion of time series with cyclic dynamics
685 each year and blue bars represent years with five or more time series. Only time series within the
686 cone of influence were used.

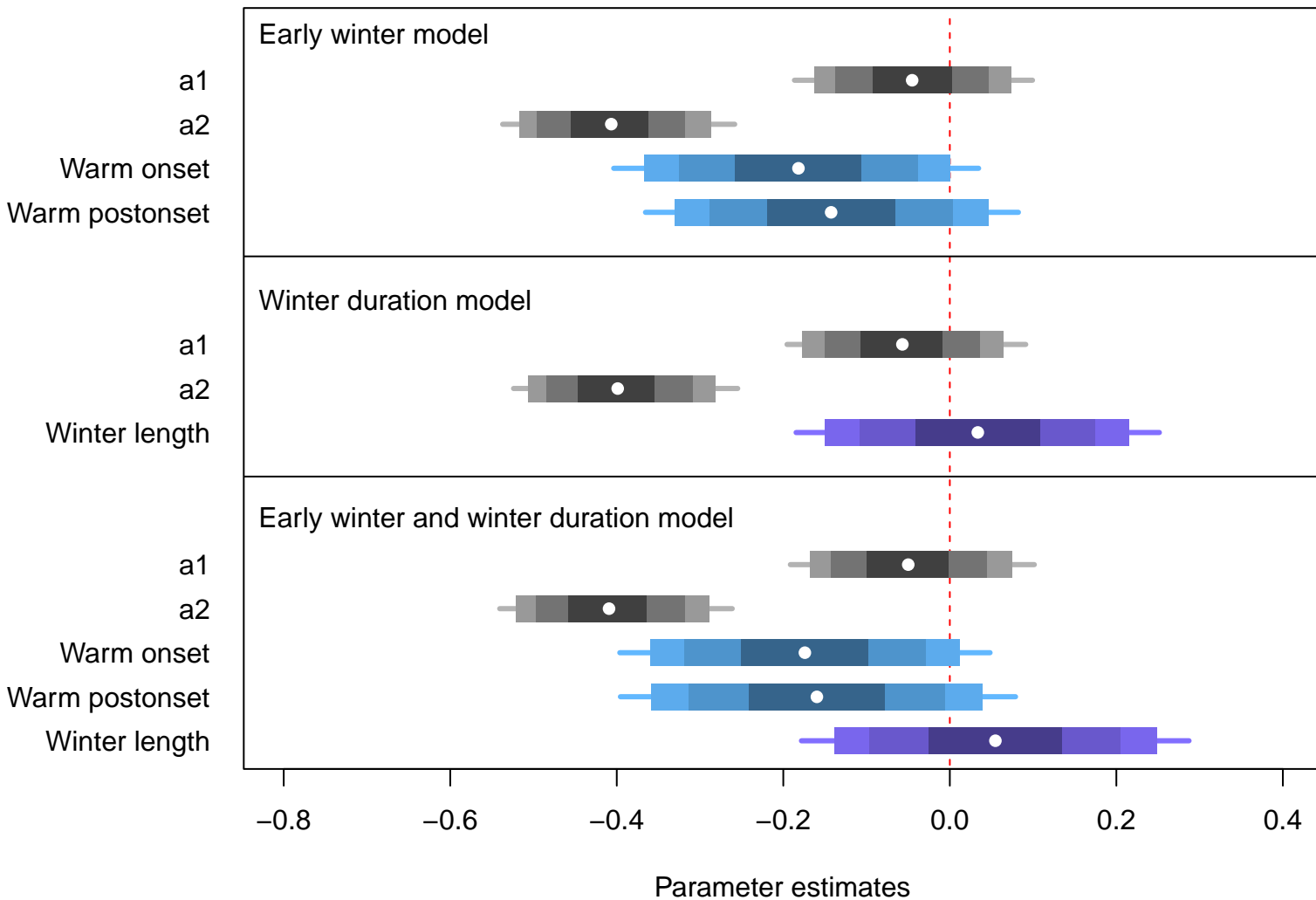
687 **Figure 3.** Effect of winter climate on lemming abundance. Parameter estimates for the influence
688 of warm weather in early winter (sum of temperatures ≥ -2 °C over periods of six hours) during
689 the period when the snow cover is established (from 5% snow cover to snow cover $> 80\%$ and not
690 getting reduced to below 50% anymore; Warm onset) and during the first 30 days after

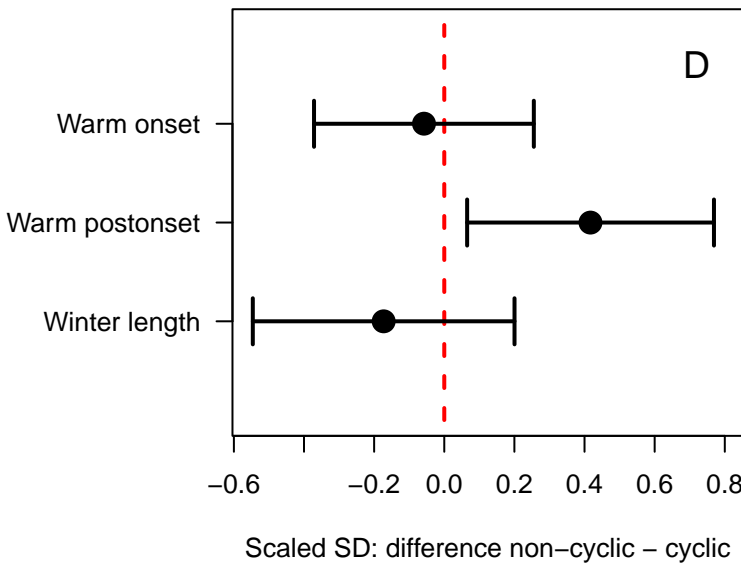
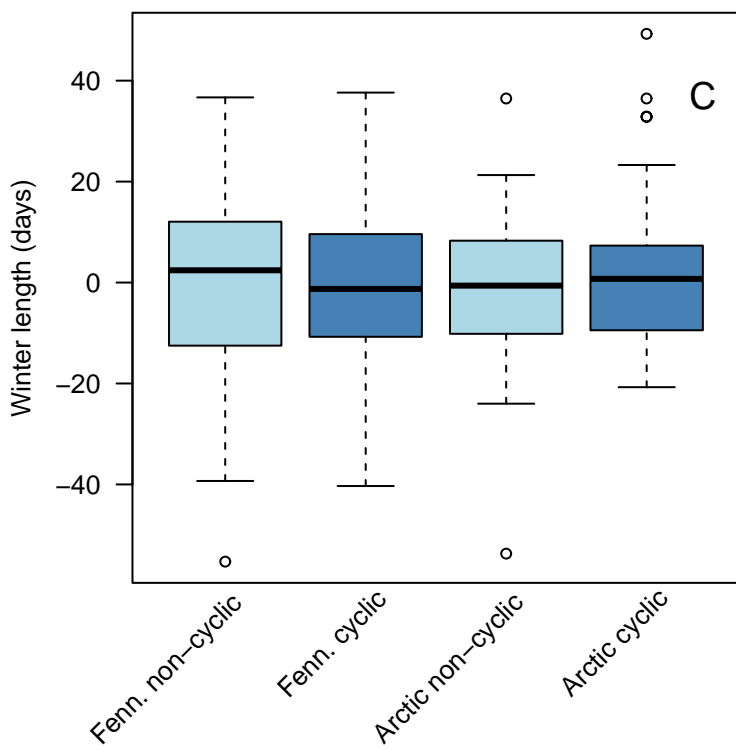
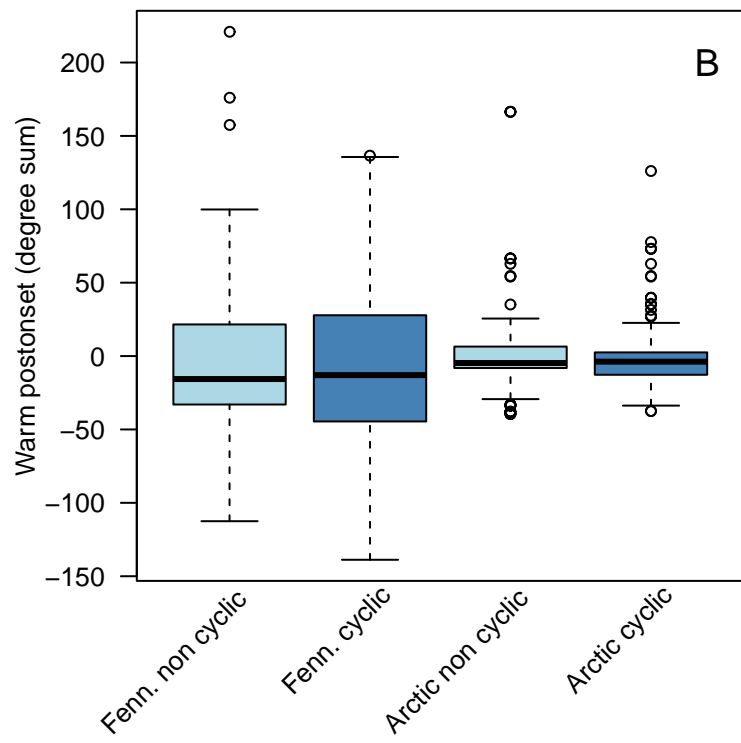
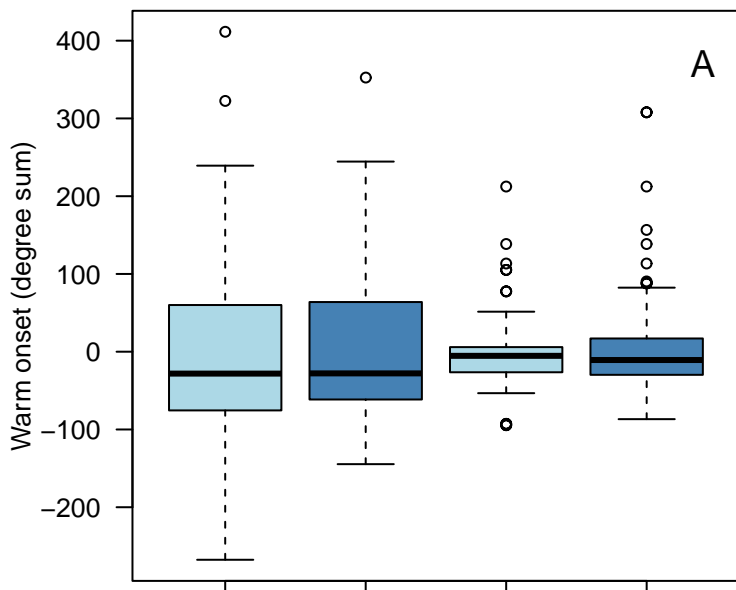
691 establishment of a permanent snow cover (Warm postonset), as well as the influence of winter
692 duration (Winter length) obtained from Bayesian state space models assuming a log-linear
693 autoregressive process of order 2. Climatic variables were scaled to mean 0 and $SD = 1$ prior to
694 analysis making the magnitude of their effects comparable. Autoregressive parameters are shown
695 ($a_1 =$ direct density dependence + 1 (see [10]), $a_2 =$ delayed density dependence). Results of the
696 three different models correspond to our three hypotheses with climatic variables expressed as
697 relative to the mean at each site. Dots represent the mean of the posterior distribution, boxes the
698 50%, 80% and 90% credible intervals and lines the 95% credible interval. Red dotted line
699 illustrates 0.

700 **Figure 4.** Effect of winter climate on cyclicity of lemming populations. Boxplots of three
701 climatic variables, expressed as relative to the mean at each site, characterizing winter conditions
702 during periods when lemming populations were classified as cyclic or non-cyclic by the wavelet
703 analysis for sites in Fennoscandia (Fenn.) and in the rest of the Arctic (Arctic). The three climatic
704 variables differed between sites with *Lemmus lemmus* in Fennoscandia and sites with other
705 species in the rest of the Arctic (warmer climate and shorter winter in Fennoscandia; electronic
706 supplementary material, figure S7). A) Warm spells during snow onset; B) Warm spells during
707 the first 30 days after snow onset; C) Winter length. Boxes represent the interquartile distance
708 and horizontal lines show the median. Whiskers show 1.5 times the interquartile range and dots
709 represent values outside this range. D) Differences in deviations for each of the three climatic
710 variables (relative values) between cyclic and non-cyclic periods. Standard deviations (SD) were
711 scaled to be displayed on the same plot. A positive difference indicates larger climatic variability
712 during non-cyclic periods. Red dotted line illustrates 0.









Supplementary Material for

Taking the beat of the Arctic: are lemming population cycles changing due to winter climate?

Gilles Gauthier, Dorothée Ehrich, Maria Belke-Brea, Florent Domine, Ray T. Alisauskas, Karin Clark, Frauke Ecke, Nina E. Eide, Erik Framstad, Jay Frandsen, Olivier Gilg, Heikki Henttonen, Birger Hörnfeldt, Gennadiy D. Kataev, Irina E. Menyushina, Lauri Oksanen, Tarja Oksanen, Johan Olofsson, Gustaf Samelius, Benoit Sittler, Paul A. Smith, Aleksandr A. Sokolov, Natalia A. Sokolova and Niels M. Schmidt

Corresponding author: gilles.gauthier@bio.ulaval.ca

This PDF file includes:

Supplementary Materials and Methods

Description of data files

Figs. S1 to S8

Tables S1 to S6

Supplementary Material and Methods

Lemming data

Methods used to sample lemming abundance across sites included: live trapping (2 series), snap trapping (16 series), winter nest counts (3 series), standardized incidental observations (1 series) and qualitative indices (2 series). Density estimates based on capture-mark-recapture methods applied to live-trapping data, which accounts for imperfect detection [1], are considered the most accurate methods to estimate small mammal abundance. Snap trapping, standardized incidental observations and winter nest counts have also been shown to provide reliable estimates of lemming density when adequate sampling scheme and effort are used even if they do not formally account for imperfect detection [2]. At all study sites, sampling effort met the minimum criteria recommended by [2], namely 64 traps and 6 trapping occasions for live-trapping, 400 trap-nights for snap-trapping, 200 person-hours for incidental observations and plots covering 10 ha for winter nest counts (table S2). Therefore, we assumed that time series based on these methods provided robust indices of lemming abundance. Although qualitative indices have not been formally validated with independent data (e.g. density estimates derived from live-trapping), they have been shown to be adequate to track the huge population fluctuations of lemmings (Typically >2 order of magnitude between peaks and lows; [3]) across years [4]. Nonetheless, considering the possible uncertainties associated with qualitative indices, analyses relating lemming abundance to climatic variables were conducted both with and without these datasets. Results were qualitatively the same although credible intervals were slightly larger (results not shown).

We summarize below the field protocol of each method used to sample lemmings across our study sites (more details on lemming sampling methods can be found in [5]. All sites applied

field protocols consistently across the study periods although sampling effort increased over time at a few sites (table S2). At Bylot Island, abundance was estimated by snap-trapping in the early days and live-trapping afterward but a period of overlap between the two sampling methods allowed for a proper calibration [2,6]. Only one, or a few in some cases, experienced researchers were responsible for the field sampling at all sites. When field assistants were required, they were properly trained by experienced researchers. Lemming populations were sampled during the summer at all sites except three (Karupelv, Zackenberg and Aulavik), which relied on lemming winter nest counts. However, winter nest counts were shown to provide a reliable index of lemming abundance in the following summer [2,7,8]. For sites with two annual trapping sessions (spring and autumn), data were averaged.

Live trapping

At Bylot Island, individual trapping grids consisted in 144 trapping stations laid out in a cartesian plane (12 x 12) with each station separated by 30 m. A baited Longworth trap was set <15 m of each station, preferably where signs of lemming activity were detected, and its exact position was recorded. Traps were set and locked in the open position several days before trapping occurred. During a trapping session, traps were visited at 12-h intervals during three consecutive days for a total of 6 trapping occasions. All captured individuals were identified, sexed, marked and released. Densities (expressed in N/ha) were obtained using spatially explicit capture–recapture models (SECR; 1). Densities, probabilities of detection, and effective sampling areas were obtained by maximum likelihood simultaneously using a 100-m buffer and a half-normal detection function [9]. When too few lemmings were captured ($n < 5$), the minimum number known to be alive divided by the average effective sampling area estimated over the years for each trapping grid was used.

Snap trapping

In North America, snap-trapping took place along permanent transects. At each trapping site, trapping stations were set at 15-m intervals along one or two parallel transects (250 m each) separated by at least 100 m. One or two *Museum Special* traps were set within a radius of 1.5 m of each station, preferably where signs of lemming activity such as fresh feces or browsing were detected. Traplines were visited daily for three to ten consecutive days depending of the study site. Once trapped, lemmings were identified to species. Lemming abundance was calculated as the number of lemmings captured divided by the sampling effort (expressed as N/100 trap-nights). Sampling effort was reduced by 0.5 every day that a trap misfire was detected.

In Eurasia, several trapping protocols were used. Snap trapping was carried out along permanent transects with 50-120 traps set at regularly spaced trapping stations at Kilpisjärvi (2 traps within a radius of stations placed every 7 m), Dividalen, Børgefjell, Åmotsdalen, Møsvatn (5 traps arranged in a 2-m square with 1 trap in the center and the others in each corner at stations every 25m), and Erkuta before 2007 (1 trap every 5 m). At Joatka, Abisko, and Erkuta since 2007, snap trapping was carried out according to the small quadrat method [10] which consists in placing 3 traps around each corner of a 15x15 m permanently marked quadrat. At Ammarnäs and Stora Sjøfallet, snap trapping was carried out on 1 ha permanently marked plots spaced by 300m along altitudinal transects (6-9 plots per transect). On each plot, 10 trapping stations with 5 traps each were placed at 10 m interval along the diagonal of the plot. At Finse, trapping was carried out on two permanently marked 1 ha grids. On each grid 10x10 stations with two traps each were placed at 10m interval. Traps were checked once per day for two to five consecutive days (table S2). Once trapped, all small rodents were identified to species and

the number of animals trapped for each species was divided by the number of trap nights to result in a trapping index (expressed as N/100 trap-nights).

Winter nest counts

Counts were conducted within permanent plots (1 ha or more) randomly distributed throughout the study area. Soon after snowmelt, each plot was slowly and thoroughly walked by one or several persons along parallel lines no more than 5-10 m apart. All fresh lemming winter nests was recorded and either removed or destroyed once counted. To express lemming densities, either the total number of nests found was cumulated across all permanent plots and divided by the sum of the area of the permanent plots to provide a lemming abundance index, expressed in nests/ha. At Zackenberg and Karupelv nest densities were converted into spring lemming densities using the equations provided by [8,11] for Greenland.

Standardized incidental observations

During various field activities related to wildlife studies, workers recorded observations of all vertebrates made on the study area while in the field. At East Bay, the 12 km² study area was divided into 1 km² plots, and 2 to 4 plots were visited by 1 or 2 people daily, with visits rotated systematically between plots throughout the field season. All vertebrates encountered, including lemmings, were identified to species and counted. The number of lemmings observed was compiled daily at the end of the day as well as the number of observer-hours spent in the field by each party. The total number of lemmings observed and number of observer-hours were summed at the end of each field season, and the number of lemmings observed per observer-hour was calculated to provide an index of lemming abundance that year.

Qualitative indices

The qualitative index from Laplandskiy was based on incidental observations carried out during standard field work in the study area in spring, summer and autumn (same number of days each year). The index values correspond to the following numbers of lemmings seen (in total): 0 – no lemmings seen; 1 – 1-5 lemmings seen; 2 – 6-10 lemmings seen; 3 – 11-50 lemmings seen; 4 – 50-100 lemmings seen; 5 – more than 100 lemmings seen. The observations have been carried out by two observers over the whole period (O.I. Semenov Tyan-Shanskiy and G.B. Kataev).

The qualitative index from Wrangel Island is based on an integration of all available lemming data from the Island including counts of winter nests and active burrows, snap trapping, live trapping and a qualitative assessment similar to the one used at Laplandskiy. All the data used to assemble the time series are presented by [4].

Wavelet analysis

Lemming time series used to carry out wavelet analyses [12] were transformed to $\log(\text{abundance index} + 1)$ [13] except for qualitative indices (Laplandskiy, Wrangel Island) because they were assessed on a relative scale that follows a logic similar to a logarithm scale (see above and [4]). For the two series that had a missing value for one year (Aulavik 2017 and Åmotsdalen 2018), this value was replaced by the average of the previous and subsequent year for the wavelet analysis. The range of possible periodicities was fixed between 2.5 and 8 years to cover the known cycle lengths for lemmings (typically, 3 to 5 years) with some margin [3,14], except for Wrangel Island where the upper bound was extended to 12 years because an earlier study had documented unusually long lemming cycles at this site [4]. Areas outside of the cone of influence on wavelet plots were not used for data interpretation or when relating cyclicity parameters to climate data as they are subject to edge effects because the spectral information

lacks accuracy [12]. Time spans for which cyclicity was detected based on a single peak in a time series were considered not to represent true cycles and excluded for further analyses (e.g. *Lemmus trimucronatus* in Daring Lake, 2012-2015; figure S3). Mean periodicity was calculated over all time periods in a series for which periodicity was determined to be significant.

Wavelet analyses are well-suited for detecting the presence of transient dynamics (i.e. transition between cyclic and non-cyclic periods, [12]). Recommended minimum sample size to apply wavelets are 25 to 30 years and periodicities smaller than 25% of the time series length [12]. Considering that median length of our time series was 26 years (range: 20 to 91 years, table S1) and that lemming population cycles are typically 3 to 5 years in length, 17 of our 24 time series met the first criteria whereas all of them met the second criteria. However, restricting the analyses to the 17 time series meeting the first criteria as well yielded the same proportion of study years showing a cyclic dynamics (all sites pooled). In addition, wavelet analysis should yield robust results even in presence of observational noise [12].

Climate data

The snow cover time series were derived from MODIS MOD10A1 snow product collection 6 distributed by the National Snow and Ice Data Center (<http://nsidc.org/>). The MOD10A1 snow product has a spatial resolution of 500 m and a temporal resolution of 1 day. MODIS data were clipped, using Python's *polygon.contains()* function in the shapely package, to include only pixels within polygons defined at each site (figure S1a). The MODIS tiles from which site data was clipped are listed in table S5. Snow cover information at the pixel level is provided by the normalized-difference snow index (NDSI) (for detailed information on NDSI calculations, see the collection 6 User Guide; [15]). We transformed the NDSI into binary classes of snow/no snow in order to calculate the daily snow cover fraction at the site level. We used a NDSI threshold of 0.4

for the binary classification, i.e. pixels with $NDSI \geq 0.4$ were classified as snow-covered (1) and pixels with $NDSI < 0.4$ as not snow covered (0). Pixels covered by water or clouds were excluded from the binary classification. A NDSI threshold of 0.4 was first suggested by [16] to distinguish snow from other bright materials like clouds, soils or rocks and has since been widely used as a standard value. Some studies have shown that the NDSI threshold can have high spatiotemporal variability for sites with steep terrains, high vegetation canopy and high spatial resolution, but that the standard value of 0.4 performs well for sites with flat topography, low vegetation and with a resolution ≥ 500 m [17-19]. We decided to use the standard value because the area enclosed in our polygons had a relatively flat topography and low vegetation.

The daily fractional snow cover at the site level was established by counting the number of MODIS pixels classified as snow covered versus the total number of cloud-free MODIS pixels within the polygon. Days with a cloud cover of $\geq 75\%$ were discarded. To obtain an approximate daily snow cover value for cloudy days and days with no valid MODIS data, snow cover was linearly interpolated between days with valid observations. MODIS-derived snow cover time series were used to determine the snow melt over the period February to August and the snow onset over the period August to December (see figure S1b for an example the spring snow cover time series at one site).

Snow cover was linearly interpolated for days without valid MODIS data and this interpolation introduced uncertainty in the determination of dates of snow melt (Melt50) or onset (Onset 80). Therefore, as a measure of precision we used the number of days over which we interpolated between usable MODIS data for the interval during which values of Onset80 and Melt50 fell (i.e. interpolation length). This value was 0 (highest precision) if snow melt or onset dates fell between consecutive days with usable MODIS and increased with the interpolation

length. For `Winter_length`, we calculated the mean interpolation length of `Onset80` and `Melt50` and used that as a measure of precision of this variable. For some years, `Onset80` is missing because the polar night sets in at the northernmost sites before a permanent snow cover had formed or the formation of the permanent snow cover could not be observed due to several consecutive cloudy days. For `Onset_duration` and the `Warm_onset` values that are based on it, the precision was calculated as the mean interpolation length of `Permanent_onset` (the last day in autumn with a snow cover below 5%) and `Onset80`. Values with (mean) interpolation lengths of 15 days or more were excluded.

We could validate the `Melt50` determined by the analysis of MODIS data with ground data at two sites. At Zackenberg, snow cover over the whole study area was determined annually using daily images taken by automatic cameras located on a mountain slope overlooking the central part of valley. At Bylot Island, snow cover over the whole study area was visually estimated every year at 2-d interval from an elevated vantage point located in the center of the valley. At both sites, date of 50% snow cover determined on the MODIS data was strongly related to the date of 50% snow cover determined on the ground (figure S8).

Analyses relating lemming abundance to climate data

The state space model described in the main text was implemented in a Bayesian framework and priors were kept wide and uninformative (see Model script below for details). Posterior distributions for all parameters were obtained using Markov Chain Monte Carlo (MCMC) estimation computed through Jags run with the `runjags` package in R [20]. We ran three parallel MCMC chains. The first 20 000 iterations were discarded as burn-in and 100 000 iterations were used with a thinning of 10 for parameter estimation. Convergence of the chains was assessed by visually inspecting the trace plots and by calculating Gelman-Rubin's R statistic

and the effective sample size [21]. Convergence was good for all models with $R < 1.007$ and effective samples sizes were > 2400 for all estimated parameters. We did not perform a formal selection among models with the three different combinations of variables, but rather compared them and assessed the consistency of estimated effects of winter climate [22]. The fit of the model was assessed through a posterior predictive check using Chi-square as a discrepancy measure between the observed and expected values on the one side and simulated and expected values on the other side [23]. In addition to assessing this check graphically, we calculated a Bayesian p-value to summarize model fit [23]. All Bayesian p-values were between 0.5 and 0.6, indicating a good model fit.

Principal component analysis of climate variables across localities

We investigated differences among localities in winter climatic variables (Melt50, Onset80, Onset_duration, Winter_length, Warm_onset and Warm-postonset) through a principal component analysis carried out in the package *ade4* in R [24]. Estimates based on interpolations of snow onset or snow melt dates over 15 days or more were excluded. As expected, winter climate in the Fennoscandian mountain range of *Lemmus lemmus* differed from that in the rest of the Arctic by being warmer, having longer duration of the period of snow onset and shorter winters (figure S7). Within the Fennoscandian region, Finse, which is the site situated at highest altitude, differed considerably from the other sites. Thus, in order to investigate possible relationships between lemming dynamics and winter climate, we used both relative climatic variables calculated by subtracting the mean at each site from annual values and absolute climatic variables for all analyses in this section.

Model script

Scripts of the state-space model assessing the effect of climatic variables on annual lemming abundance as specified in jags.

```

model{
  ## OBSERVATION MODEL ## a different one for the different types of data
  for(m in Mn){
    for(t in fromto[m, 1]:fromto[m, 2]){
      y[m,t] ~ dpois(N[m,t] * eff2[m,t])
    }
  }

  for(m in Ma){
    for(t in fromto[m, 1]:fromto[m, 2]){
      y[m,t] ~ dnorm (N[m,t], tau_o)
    }
  }

  for(m in Mq){
    for(t in fromto[m, 1]:fromto[m, 2]){
      y[m,t] ~ dpois(N[m,t])
    }
  }

  ## POPULATION MODEL ##
  for(m in 1:M){
    for(t in (fromto[m, 1] + 2): fromto[m, 2]){
      mu[m, t] <- beta_0[m] + beta_N1[m] * n[m,t-1] + beta_N2[m] * n[m,t-2] +
        beta_F1 * pdp_5_80_m2[m,t] + beta_F2 * pdp_80_30_m2[m,t] + beta_W *
winter_duration[m,t]
      n[m, t] ~ dnorm(mu[m, t], tau_r)
    }
    for(t in fromto[m, 1]: fromto[m, 2]){
      N[m, t] <- exp(n[m, t])
    }
  }

  for(m in 1:M) {
    beta_0[m] ~ dnorm(mu_b0, tau_b0) #random effect
  }

  for(m in 1:M) {
    beta_N1[m] ~ dnorm(mu_b1, tau_b1) #random effect
  }

```



```
for(m in 1:M) {
  beta_N2[m] ~ dnorm(mu_b2, tau_b2) #random effect
}
```

```
## MISSING VALUES ##
```

```
for(m in 1:M){
  for(t in (fromto[m, 1] + 2): fromto[m, 2]){
    pdp_5_80_m2[m, t] ~ dnorm(mu_5_80, tau_5_80)
  }}
```

```
for(m in 1:M){
  for(t in (fromto[m, 1] + 2): fromto[m, 2]){
    pdp_80_30_m2[m, t] ~ dnorm(mu_80_30, tau_80_30)
  }}
```

```
for(m in 1:M){
  for(t in (fromto[m, 1] + 2): fromto[m, 2]){
    winter_duration[m, t] ~ dnorm(mu_wdur, tau_wdur)
  }}
```

```
## PRIORS ##
```

```
for(m in 1:M) {
  n[m, fromto[m, 1]] ~ dunif(-5, 5)
  n[m, (fromto[m, 1]+1)] ~ dunif(-5, 5)
}
```

```
beta_F1 ~ dnorm(0,0.01)
beta_F2 ~ dnorm(0,0.01)
beta_W ~ dnorm(0,0.01)
sigma_r ~ dunif(0,10)
sigma_o ~ dunif(0,10)
tau_r <- 1/(sigma_r*sigma_r)
tau_o <- 1/(sigma_o*sigma_o)
```

```
mu_b0 ~ dnorm(0,0.01)
sigma_b0 ~ dunif(0,10)
tau_b0 <- 1/(sigma_b0*sigma_b0)
```

```
mu_b1 ~ dnorm(0,0.01)
sigma_b1 ~ dunif(0,10)
tau_b1 <- 1/(sigma_b1*sigma_b1)
```

```
mu_b2 ~ dnorm(0,0.01)
sigma_b2 ~ dunif(0,10)
tau_b2 <- 1/(sigma_b2*sigma_b2)
```

```
mu_5_80 ~ dnorm(0,0.01)
sigma_5_80 ~ dunif(0,10)
tau_5_80 <- 1/(sigma_5_80*sigma_5_80)
```

```
mu_80_30 ~ dnorm(0,0.01)
sigma_80_30 ~ dunif(0,10)
tau_80_30 <- 1/(sigma_80_30*sigma_80_30)
```

```
mu_wdur ~ dnorm(0,0.01)
sigma_wdur ~ dunif(0,10)
tau_wdur <- 1/(sigma_wdur*sigma_wdur)
```

Description of data files

We provided with this manuscript two files that contained the data used in this paper. We describe here the content of each of these files.

Gauthier_etal_lemmings_cyclicality.txt

This file contains the abundance indices for each year for the full time series, as well as the yearly classification of the series in cyclic or non-cyclic based on the wavelet analysis. The columns in the file are:

locality (site name)

year

species (lemlem – *Lemmus lemmus*; both – the local species of *Dicrostonyx* and the local species of *Lemmus* observed together; dicgro – *Dicrostonyx groenlandicus*; dictor – *D. torquatus*; lemtri – *L. trimucronatus*; lemsim - *L. sibiricus*),

abundance index (see tables S1 and S2 for details on method used at each site)

cone_influence (whether the given year was within the cone of influence – 1, or not – 0, on the wavelet plot), and cyclic (whether the time series was cyclic – 1, or not – 0, in the given year based on the wavelet analysis).

Gauthier_etal_lemmings_climate.txt

This file contains the numbers of lemmings observed as well as the trapping effort for each year in each time series, as well as the winter climate variables used in the analysis (see Material and Methods and Supplementary Material and Methods for details on their definitions and calculations). The columns in the file are:

locality (site name)

year

species (as above)

effort (monitoring effort, see table S2 for details)

number (number of lemmings recorded)

abundance (abundance index of lemmings)

onset5 (the last day in autumn with a snow cover below 5%)

onset5_days_of_interp (the number of days over which onset5 was interpolated – a measure of precision)

onset80

onset80_days_of_interp (the number of days over which onset80 was interpolated)

onset_duration

melt50

melt50_days_of_interp (the number of days over which melt80 was interpolated)

winter_length

warm_onset_0 (warm_onset calculated for periods above 0°C)

warm_postonset_0 (warm_postonset calculated for periods above 0°C)

warm_onset_2 (warm_onset calculated for periods above -2°C)

warm_postonset_2 (warm_postonset calculated for periods above -2°C)

Supplementary Figures and Tables

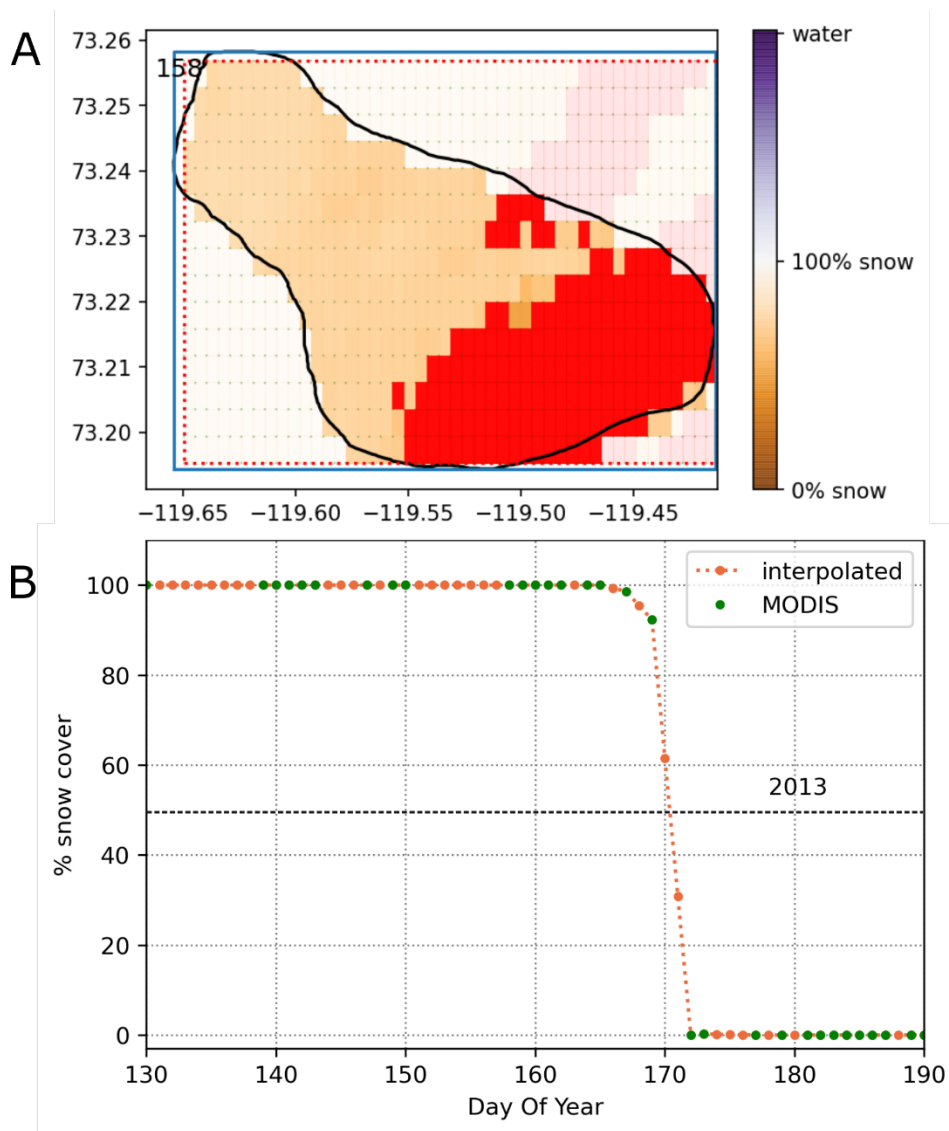


Figure S1. A: Clipped MODIS data for study site Aulavik, Canada, for Day of Year 84 in 2013 (MODIS tile h14v01). Red pixels indicate either clouds or invalid MODIS pixels, blue pixels water, white and light brown pixels ground with different fractional cover of snow and dark brown pixels ground without snow. B: Example of MODIS-derived snow cover time series for the melting period in 2013 for Aulavik. Green dots are values extracted from MODIS and orange dots are linear interpolation on days when MODIS images were unavailable. In this example, interpolation value for the date of 50% snow cover (horizontal dashed line), a measure of precision, is 2 days (see methods).

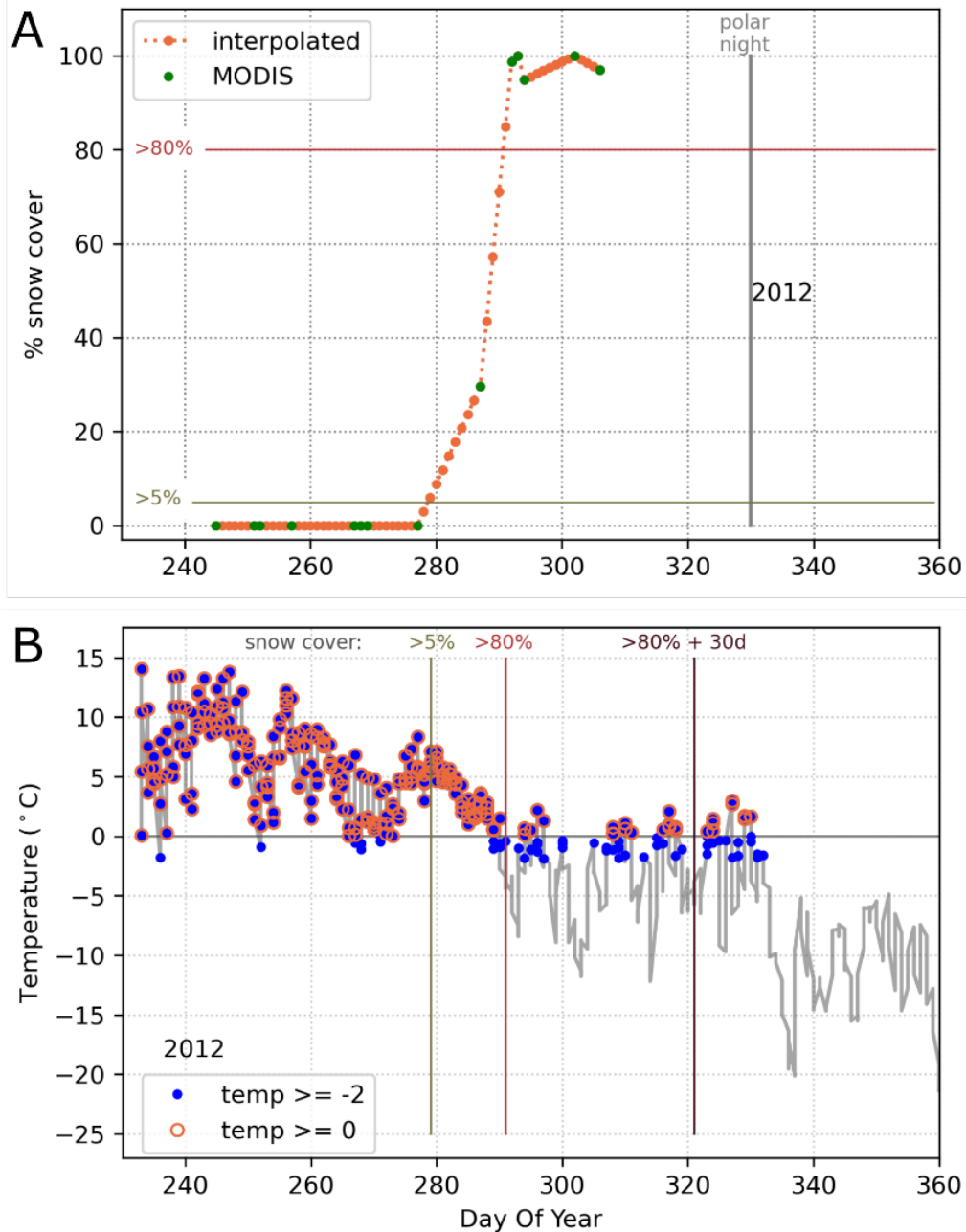


Figure S2. Temporal change in (A) snow cover (daily values) and (B) temperature (every 6 h) at Joatka, Norway, during autumn and early winter 2012. (A) Green dots are values extracted from MODIS and orange dots are linear interpolation on days when MODIS data was unavailable. In this example, interpolation value for the 5% and 80% snow cover dates, a measure of precision, are 9 and 4 days, respectively (see methods). MODIS data became unavailable ~14 d before the

polar night. (B) Vertical lines define the periods of snow onset (between 5% and 80% snow cover; derived from the top graph) and the 30-day period following permanent snow onset. The blue dots are temperature ≥ -2 C and the blue/orange dots ≥ 0 C.

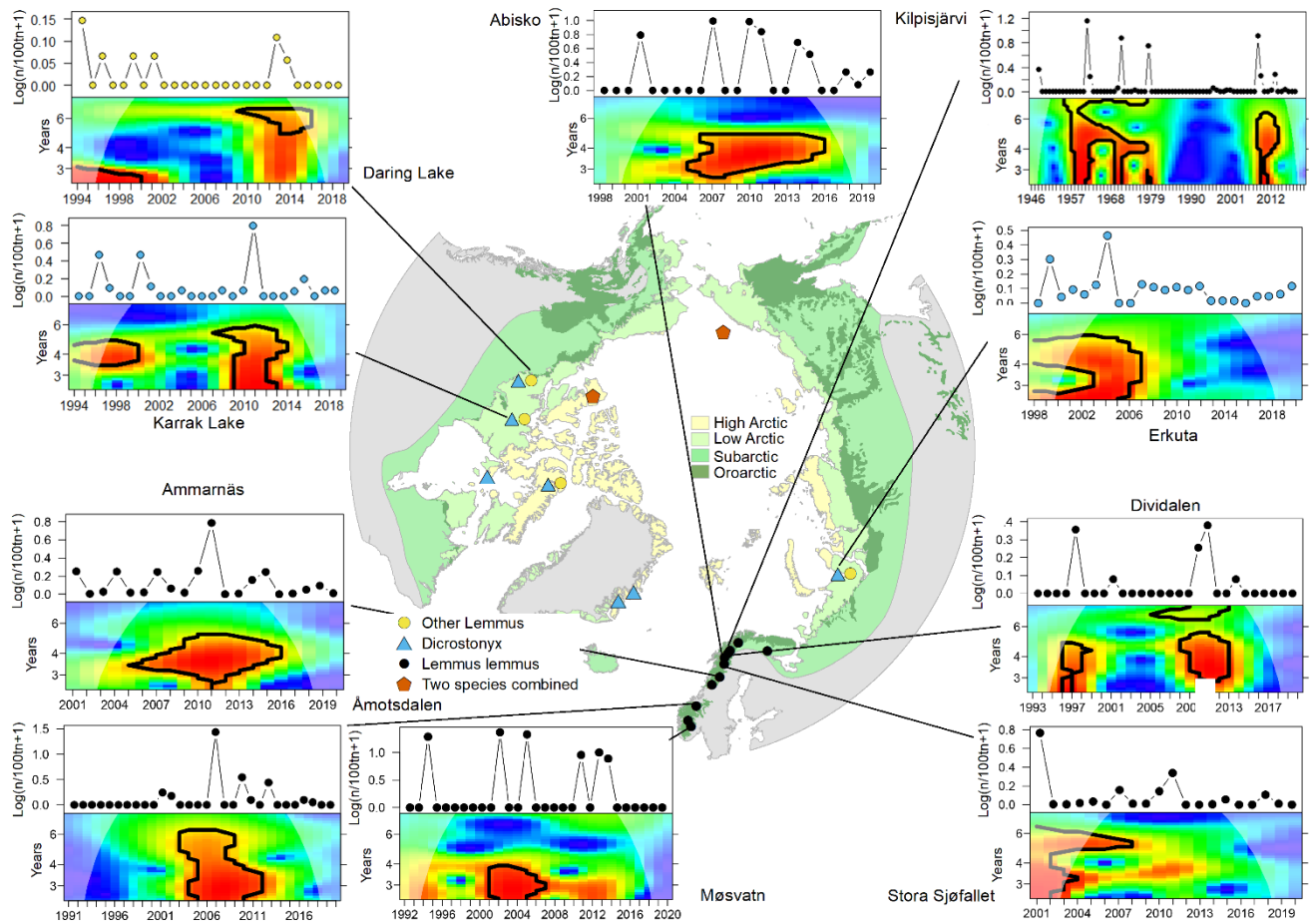


Figure S3. Additional lemming time series and map of the sites where they were collected. The colors on the map show the bioclimatic subzones of the Arctic [25] and the Oroarctic. Log transformed abundance indices/estimates (color codes on the time series refer to the species) with results from the wavelet analysis underneath are shown for the 10 time series that are not presented in figure 1. The color palette indicates the wavelet power levels from blue to red; red areas with black contour lines show periods with evidence for cyclic dynamics, with the estimated periodicity shown on the y-axis. The pale colors at either end of each wavelet plot are outside the cone of influence, an area where results are subject to edge effects.

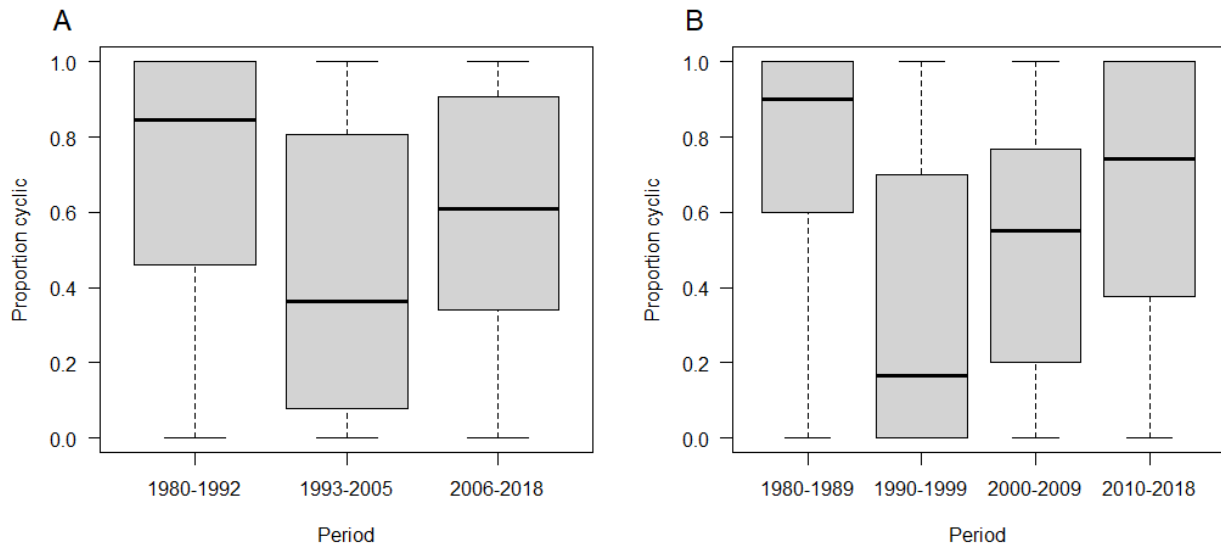


Figure S4. Proportion of cyclic years in each lemming time series calculated over 13-year (A) and 10-year (B) time periods (3 or 4 time periods, respectively). The analysis extends from 1980 to 2018, which are years with 5 or more series available (figure 2). Thick line is median, gray box is the interquartile range and the whiskers show the range of data for each time period. There was no significant difference between time periods (Kruskal Wallis test, A: $p = 0.191$, B: $p = 0.187$).

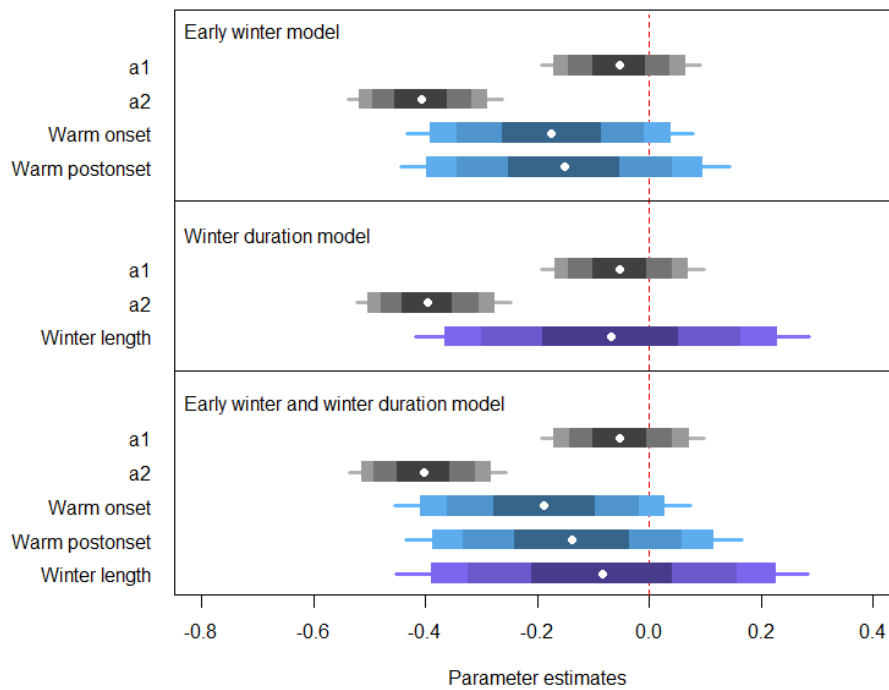


Figure S5. Effect of winter climate on lemming abundance. Parameter estimates for the influence of warm weather in early winter (sum of temperatures above -2°C over periods of six hours) during the period when the snow cover is established (from 5% snow cover to snow cover greater than 80% and not getting reduced to below 50% anymore; Warm onset) and during the first 30 days after establishment of a permanent snow cover (Warm postonset), as well as the effect of winter duration (winter length) obtained from Bayesian state space models assuming a log-linear autoregressive process of order 2. Climatic variables were scaled to mean 0 and SD = 1 prior to analysis making the magnitude of their effects comparable. Autoregressive parameters are shown ($a1$ = direct density dependence + 1 (see [13]), $a2$ = delayed density dependence). Results of the three different models correspond to our three hypotheses and are based on absolute climatic variables. Dots represent the mean of the posterior distribution, boxes the 50%, 80% and 90% credible intervals and lines the 95% credible interval. Red dotted line illustrates 0.

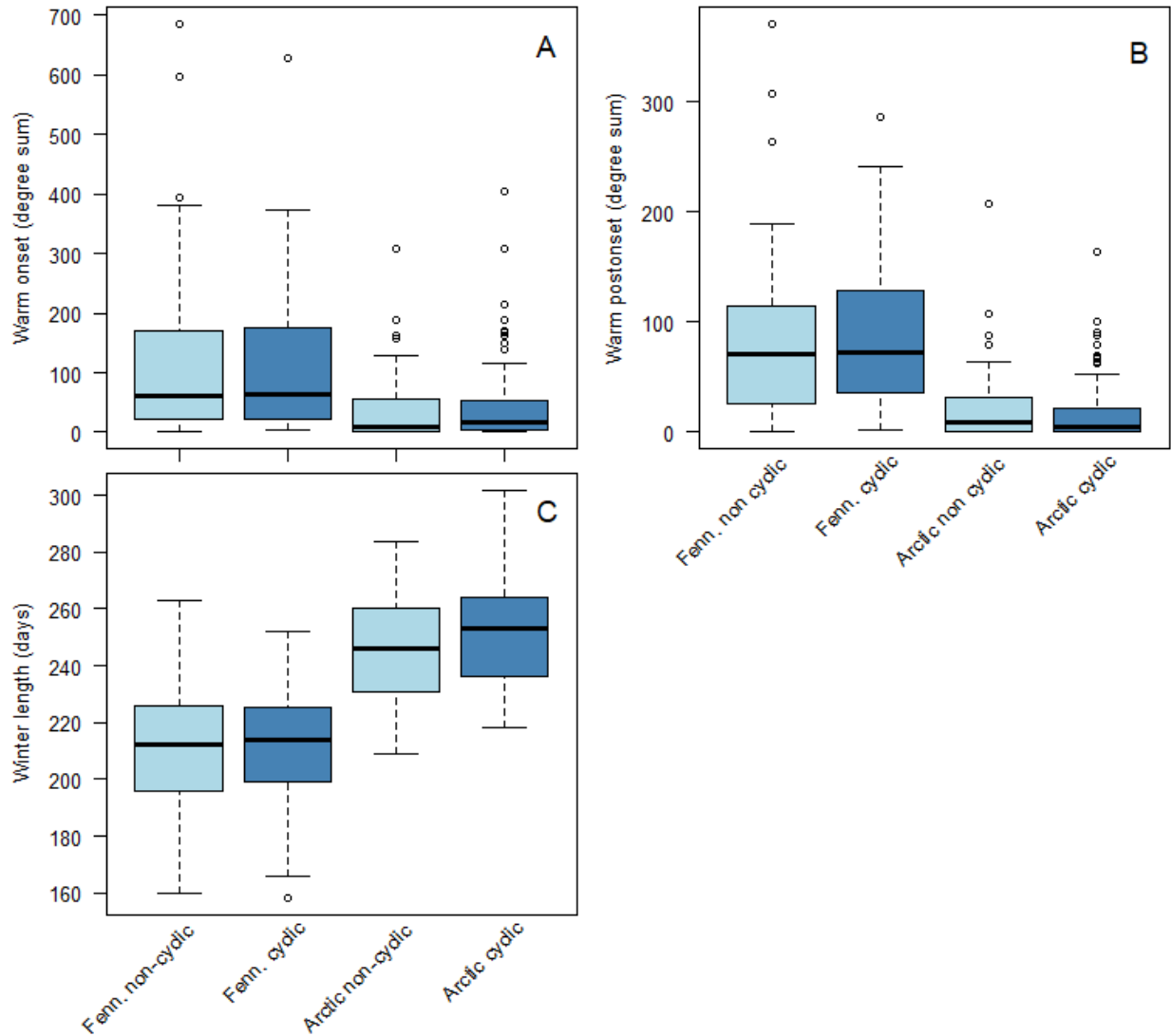


Figure S6. Effect of winter climate on cyclicality of lemming population. Boxplots of three climatic variables (absolute values) characterizing winter conditions during periods when lemming populations were classified as cyclic or non-cyclic by the wavelet analysis for sites in Fennoscandia (Fenn.) and in the rest of the Arctic (Arctic). The three climatic variables differed between sites with *Lemmus lemmus* in Fennoscandia and sites with other species in the rest of the Arctic (warmer climate and shorter winter in Fennoscandia; figure S7). A) Warm spells during snow onset; B) Warm spells during the first 30 days after snow onset; C) Winter length. Boxes

represent the interquartile distance and horizontal lines show the median. Whiskers show 1.5 times the interquartile range and dots represent values outside this range. Differences in deviations based on scaled standard deviations are not presented here because it is the same than with relative values (see figure 4).

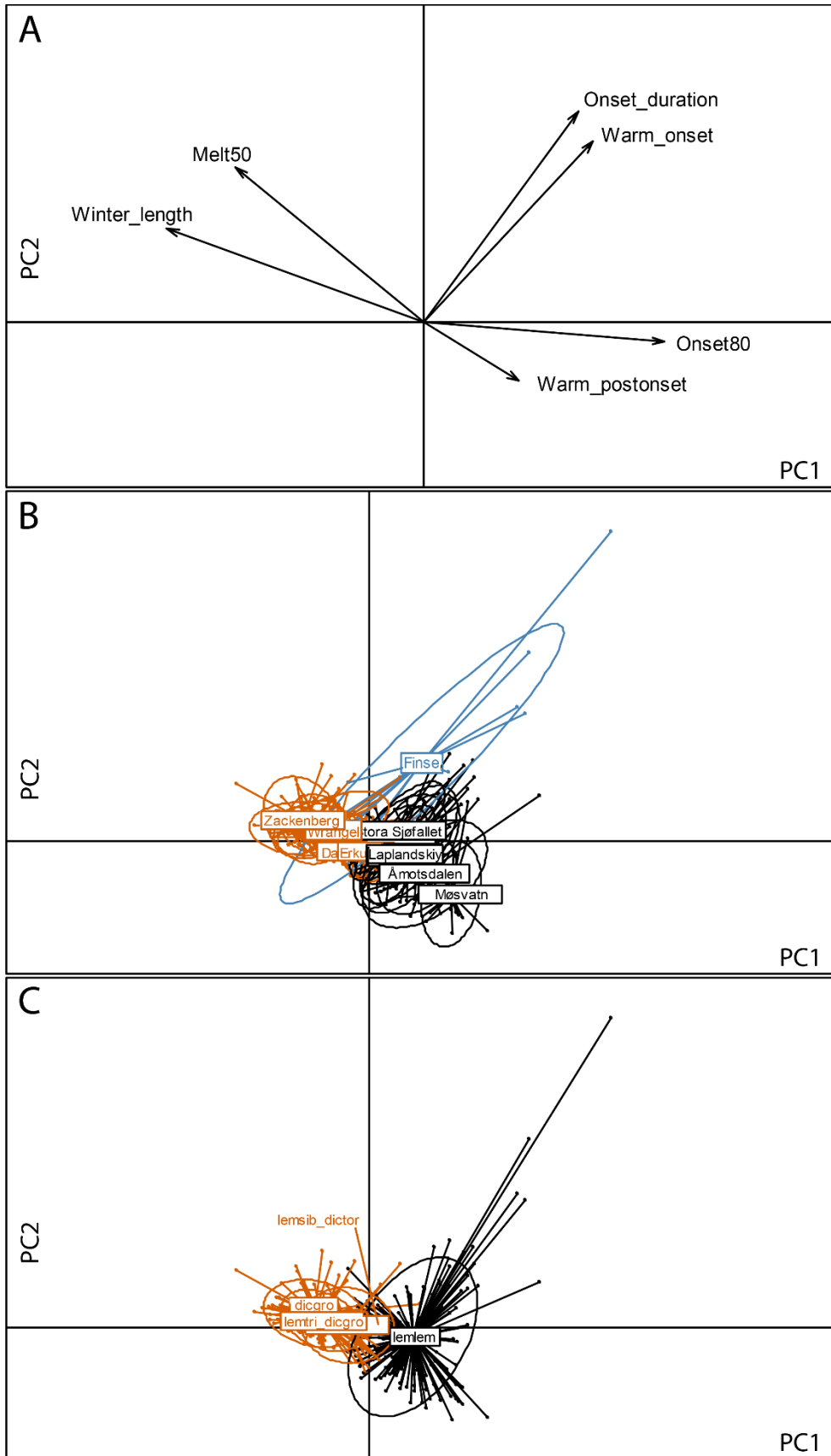


Figure S7. Principal component analysis of the six variables characterizing winter conditions that were determined for each year and site. The first axis (PC1) explained 47% of variation and the second axis (PC2) explained 24%. A) Correlations between the variables, B) Years are grouped by sites where lines link individual years (dots) to the mean for each site. Ellipses show 1.5 standard deviations for each site. Not all site names could be displayed. The Fennoscandian sites are shown in black, the rest of the Arctic in orange and Finse is highlighted in blue. C) Years are grouped by species and displayed as on the previous panel. *Lemmus lemmus* (lemlem) is shown in black and other lemmings in orange (lemtri = *L. trimucronatus*, lemsib = *L. sibiricus*, dicgro = *Dicrostonyx groenlandicus*, dictor = *D. torquatus*).

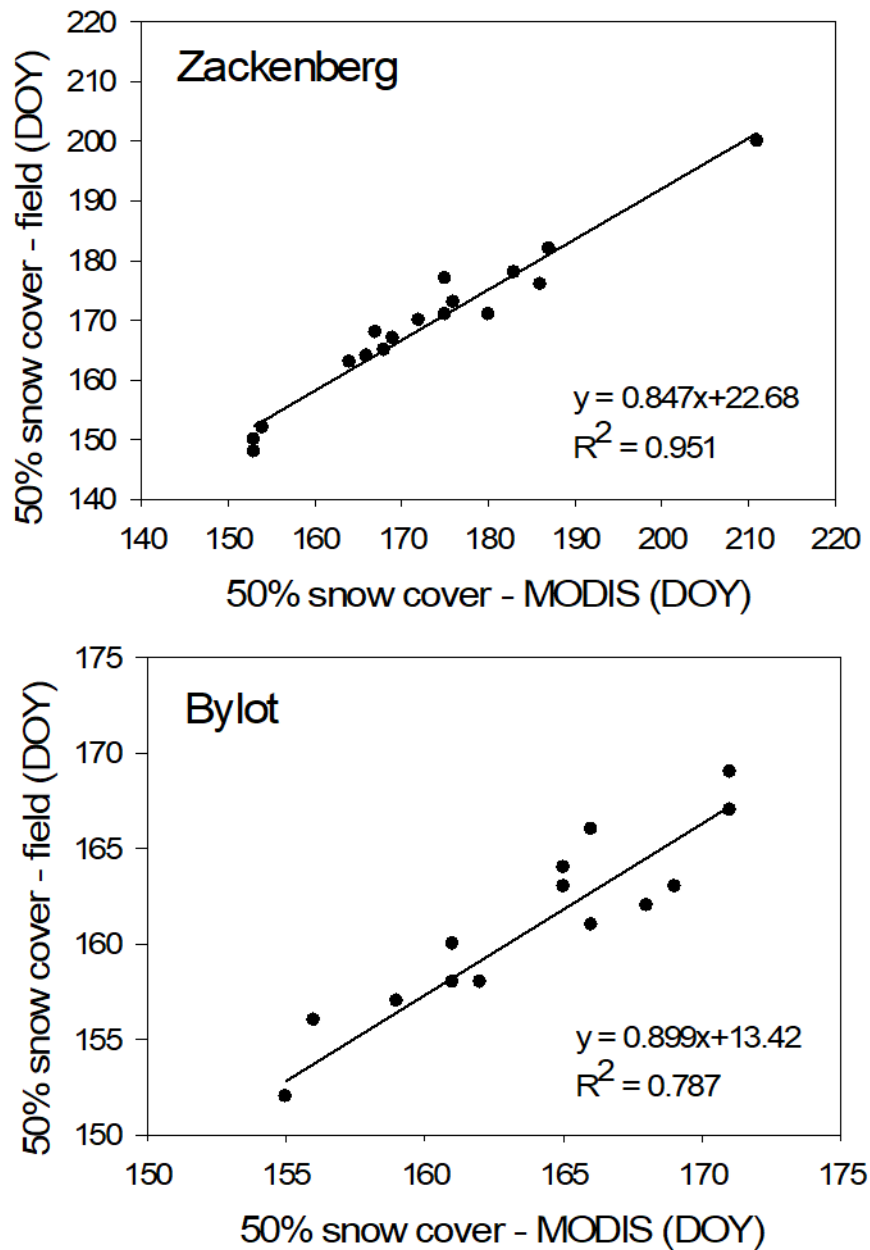


Figure S8. Relationship between local snow melt date (50% snow cover) determined by ground observations and MODIS satellite images at Zackenberg and Bylot Island (DOY = Day of the Year).

Table S1. General information of the time series of annual lemming abundance used for the analyses (updated from [26] where more details can be found). See [27] for the definition of Oroarctic.

Site name	Region and country	Lead researcher	Coordinates	Climate zone	Time frame	N years	Sampling method ^a	Species
Wrangel Island	Chukotka, Russia	I Menyushina	71.23 N, 179.42W	High Arctic	1971-2017	47	QI ^b	<i>Dicrostonyx vinogradovi</i> , <i>Lemmus portenkoi</i>
Erkuta	Yamal, Russia	N A Sokolova, D Ehrich, & A A Sokolov	68.25 N, 69.20 E	Low Arctic	1998-2020	23	ST	<i>Dicrostonyx torquatus</i> , <i>Lemmus sibiricus</i>
Laplandskiy Nature Reserve	Murmansk Obl., Russia	G Kataev	67.650 N, 32.267 E	Subarctic	1929-2019	91	QI	<i>Lemmus lemmus</i>
Joatka	Finmark, Norway	L Oksanen	69.75 N, 23.98 E	Subarctic/ oroarctic	1977-2019	43	ST	<i>Lemmus lemmus</i>
Kilpisjärvi	Lapland, Finland	H Henttonen	69.05 N, 20.80 E	Oroarctic	1946-2020	75	ST	<i>Lemmus lemmus</i>
Dividalen	Troms, Norway	E Framstad & N E Eide	68.71 N, 19.80 E	Oroarctic	1993-2020	28	ST	<i>Lemmus lemmus</i>
Abisko	Norrbottn, Sweden	J Olofsson	68.3 N, 18.5 E	Oroarctic	1998-2020	23	ST	<i>Lemmus lemmus</i>
Stora Sjöfallet	Norrbottn, Sweden	F Ecke & B Hörnfeldt	67.60 N, 18.06 E	Oroarctic	2001-2020	20	ST	<i>Lemmus lemmus</i>
Ammarnäs	Västerbotten, Sweden	F Ecke & B Hörnfeldt	65.96 N, 16.24 E	Oroarctic	2001-2020	20	ST	<i>Lemmus lemmus</i>
Børgefjell	Trøndelag, Norway	E Framstad & N E Eide	65.06 N, 13.83 E	Oroarctic	1990-2020	31	ST	<i>Lemmus lemmus</i>

Site name	Region and country	Lead researcher	Coordinates	Climate zone	Time frame	N years	Sampling method ^a	Species
Åmotsdalen	Trøndelag, Norway	E Framstad & N E Eide	62.46 N, 9.42 E	Oroarctic	1991-2020	30	ST	<i>Lemmus lemmus</i>
Finse	Hordaland, Norway	E Framstad & N E Eide	60.59 N, 7.53 E	Oroarctic	1970-2020	51	ST	<i>Lemmus lemmus</i>
Møsvatn	Telemark, Norway	E Framstad & N E Eide	59.86 N, 8.30 E	Oroarctic	1992-2020	29	ST	<i>Lemmus lemmus</i>
Zackenbergl	Greenland	N M Schmidt	74.468 N, 20.568 W	High Arctic	1996-2020	25	WN	<i>Dicrostonyx groenlandicus</i>
Karupelv Valley	Greenland	B Sittler	72.506 N, 23.999 W	High Arctic	1988-2020	33	WN	<i>Dicrostonyx groenlandicus</i>
Bylot Island	Nunavut, Canada	G Gauthier	73.156 N, 79.972 W	High Arctic	1993-2019	27	LT, ST	<i>Lemmus trimucronatus</i> , <i>Dicrostonyx groenlandicus</i>
East Bay	Southampton Island, Nunavut, Canada	P A Smith	63.983 N, 81.667 W	High Arctic	2000-2019	20	IO	<i>Dicrostonyx groenlandicus</i>
Karrak Lake	Nunavut mainland, Canada	R T Alisauskas	67.233 N, 100.250 W	Low Arctic	1994-2019	26	ST	<i>Lemmus trimucronatus</i> , <i>Dicrostonyx groenlandicus</i>
Daring Lake	Northwest Territory, Canada	K Clark	64.867 N, 111.533 W	Low Arctic	1994-2019	26	ST	<i>Lemmus trimucronatus</i> , <i>Dicrostonyx groenlandicus</i>
Aulavik National Park	Banks Island, Nunavut, Canada	J Frandsen	73.226 N, 119.591 W	High Arctic	1999-2019	21	WN ^b	<i>Lemmus trimucronatus</i> , <i>Dicrostonyx groenlandicus</i>

^a Sampling method: LT = live-trapping, IO = standardized incidental observations, QI = qualitative indices, ST = snap-trapping, WN = winter nest counts.

^b Abundance of both species combined.

Table S2. Sampling effort for each lemming time series used in the analyses and references where more methodological details can be found. Area refers to the polygon used to determine snow cover and which encompasses all lemming monitoring plots at each site (see methods for details).

Site name	Area covered by sampling (km ²)	Number of sampling periods per year	Period of the year	Number of plots (pl) or transects (tr)	Size of plots or length of transects	Number of traps per plot or transect	Number of trapping occasions	Total number of trap-days	References
Wrangel Island	27	1	Summer	N/A	N/A	N/A	N/A	N/A	[4]
Erkuta									
1999-2006	22	1-2	June-July	2-4 tr	250-500 m	50-100	2-3	200-2410	[28]
2007-2011	61	2	Late June, Early August	36 pl	0.023 ha	12	2	1728	
2012-2019	61	2	Late June, Early August	54 pl	0.023 ha	18	2	2592	
Laplandskiy Nature Reserve	14	1	Spring-Autumn	N/A	N/A	N/A	N/A	N/A	[29]
Joatka									
1977-1985	28	2	June-early July, September	15-25 pl	0.023 ha	12	2	720-1200	[30]
1986-2019	28	2	June-early July, September	25 pl	0.023 ha	12	2	1200	
Kilpisjärvi									
1946-1979	9	2	Mid-June, September	1-4 pl	400 m	ca 120	2	400-4000	[31]
1980-2020	9	2	September	4 pl	400 m	ca 120	2	1900	

Site name	Area covered by sampling (km ²)	Number of sampling periods per year	Period of the year	Number of plots (pl) or transects (tr)	Size of plots or length of transects	Number of traps per plot or transect	Number of trapping occasions	Total number of trap-days	References
Dividalen	61	1	September	5 tr	475 m	100	3	1500	[32]
Abisko	29	2	Late June, early September	10 pl	0.023 ha	12	2	480	[33]
Stora Sjöfallet	166	2	Late June, August-early September	32-41pl	1 ha	50	3	9600-12300	[34]
Ammarnäs	145	2	Late June, August-early September	35-46 pl	1 ha	50	3	10500-13800	[34]
Børgefjell	30	1	September	4 tr	225 m	50	2	400	[32]
Åmotsdalen									
1991-1992	22	1	September	4-5 tr	475 m	100	3	1200-1500	[32]
1993-2020	22	1	September	4 tr	225 m	50	2	400	
Finse	22	2	Late June, early September	2 pl	1 ha	200	2-6	700-4800	[35]
Møsvatn	24	1	September	4 tr	225 m	50	2	400	[32]
Zackenbergl	27	1	July-August	1 pl	106 ha	N/A	N/A	N/A	[36]
Karupelv Valley	30	1	July-August	1 pl	1500 ha	N/A	N/A	N/A	[8]

Site name	Area covered by sampling (km ²)	Number of sampling periods per year	Period of the year	Number of plots (pl) or transects (tr)	Size of plots or length of transects	Number of traps per plot or transect	Number of trapping occasions	Total number of trap-days	References
Bylot Island									
1993-2003	33	1	Late July	4 tr	250 m	25	10	1000	[2,9,37]
2004-2019	33	1	Late July	2 pl	11 ha	144	6	1728	
East Bay	30	1	June-July	N/A	N/A	N/A	N/A	1000 ^a	[38]
Karrak Lake	60	1	June-July	3 tr	250 m	25	10	750	[39]
Daring Lake	38	1	Late July-early August	2 tr	250 m	50	6	600	[40]
Aulavik National Park	31	1	Mid-summer	5-9 pl	1 ha	N/A	N/A	N/A	

^a Number of observer-hour in this case

TableS3. Correlations between climatic variables (Pearson correlation coefficients). Only data based on less than 15 days of interpolation for snow onset or snow melt dates were used.

Variables used in the final analyses and correlations among them are highlighted in bold.

	Melt50	Onset80	Onset_duration	Warm_onset	Warm_postonset
Winter_length	0.75	-0.87	-0.30	-0.30	-0.19
Melt50		-0.32	-0.01	-0.09	-0.10
Onset80			0.43	0.36	0.20
Onset_duration				0.71	-0.05
Warm_onset					0.24

TableS4. Summary table of cyclic fluctuations of lemming time series. Number of years that lemming (*Lemmus* and *Dicrostonyx* species) population fluctuations were considered cyclic or non-cyclic within the cone of influence of the wavelet analysis and dominant periodicity during periods of cyclicity across sites (we considered periodicity of <2.5 years as non-cyclic, see methods; median periodicity was 3.7 years). Sites and species in bold are those where cyclicity was present throughout the study period.

Site	Species	Length of time series (yrs)	Number of years		Dominant periodicity (yrs)
			Cyclic	Non-cyclic	
Wrangel	<i>Lemmus</i> & <i>Dicrostonyx</i>	47	41	0	5.9
Erkuta	<i>Dicrostonyx</i>	23	7	10	2.8 ^b
	<i>Lemmus</i>	23	6	13	2.9
Laplandskiy	<i>L. lemmus</i>	91	42 ^a	43	4.0
Joatka	<i>L. lemmus</i>	43	21 ^a	16	4.3
Kilpisjärvi	<i>L. lemmus</i>	75	32	37	- ^c
Dividalen	<i>L. lemmus</i>	28	6	17	3.6
Abisko	<i>L. lemmus</i>	23	12	6	3.6
Stora Sjöfallet	<i>L. lemmus</i>	20	5	9	5.2
Ammarnäs	<i>L. lemmus</i>	20	12	2	3.7
Børgefjell	<i>L. lemmus</i>	31	19	6	3.3
Åmotdalen	<i>L. lemmus</i>	30	10	15	3.1
Finse	<i>L. lemmus</i>	51	27 ^a	18	3.3
Møsvatn	<i>L. lemmus</i>	29	7	17	2.9
Zackenbergl	<i>Dicrostonyx</i>	25	8	11	4.3
Karupelv	<i>Dicrostonyx</i>	33	11	16	4.2
Bylot	<i>Dicrostonyx</i>	26	8	11	5.0
	<i>Lemmus</i>	27	21	0	3.7

Site	Species	Length of time series (yrs)	Number of years		Dominant periodicity (yrs)
			Cyclic	Non-cyclic	
Daring	<i>Dicrostonyx</i>	26	17	1	6.2
	<i>Lemmus</i>	26	0	21	NA
Eastbay	<i>Dicrostonyx</i>	20	7	7	3.3
Karrak	<i>Dicrostonyx</i>	26	12 ^a	8	3.2
	<i>Lemmus</i>	26	11	9	3.7
Aulavik	<i>Lemmus & Dicrostonyx</i>	21	14	0	4.8

^a Period of cyclicity was discontinuous throughout these time series.

^b The periodicity with higher power is reported but there was also a periodicity at 4.3 years

^c Periodicity could not be determined (see wavelet plot on figure S1).

Table S5. List of tiles of MOD10A1 daily snow cover products used for each site (MODIS/Terra Snow Cover Daily L3 Global 500 m SIN GRID V006).

Site	Tile number
Abisko	h18v02
Ammarnäs	h18v02
Åmotsdalen	h18v02
Aulavik	h14v01
Børgefjell	h18v02
Bylot Island	h15v01
Daring Lake	h13v02
Dividalen	h18v02
East Bay	h14v02
Erkuta	h20v02
Finse	h18v02
Joatka	h18v02
Karrak Lake	h14v02
Laplandskiy	h19v02
Møsvatn	h18v03
Stora Sjöfallet	h18v02
Karupelv Valley	h17v01
Wrangel Island	h12v01
Zackenbergl	h17v01

Table S6. Site-specific acknowledgements.

Site	Acknowledgements
Erkuta	The research was funded by the State contract of the Institute of Plant and Animal Ecology, UB RAS “Terrestrial ecosystems of North-Western Siberia: assessment of the modern transformation of the communities” (No 122021000089-9), the Research Council of Norway and FRAM – High North Research Centre for Climate and the Environment. Valuable logistical support was provided by “Gazpromtrans” Ltd.
Joatka	The Research has been mainly funded by the Swedish Research Council and Academy of Finland. We also acknowledge the direct support from Finnmark University College (today Campus Alta of The Arctic University of Tromsø). Since 2017, Eva Soininen is now responsible of the trapping at this site.
Stora Sjöfallet, Ammarnäs	The monitoring of small mammals has been funded by several sources, the most important one being the Swedish Environmental Protection Agency via the National Environmental Monitoring Program.
Dividalen, Børgesfjell, Åmotsdalen Finse, Møsvatn	The monitoring was funded by The Norwegian Institute for Nature Research (NINA), the Ministry of Climate and Environment of Norway and the Norwegian Environment Agency.
Zackenbergl	We thank the Greenland Ecosystem Monitoring for access to ecosystem data from Zackenberg.
Karupelv	The long-term effort was mainly maintained through crowd funding and we are very grateful to all the people supporting this work
Bylot	The work was funded by the Natural Sciences and Engineering Research Council of Canada, the Canadian Network of Centres of Excellence ArcticNet, the Fonds Québécois de Recherche Nature et Technologies, Polar

Site	Acknowledgements
	Knowledge Canada, Canadian Foundation for Innovation, Environment Canada, Indigenous and Northern Affairs Canada, Parks Canada and the Polar Continental Shelf Program (Natural Resources Canada).
Daring	Research on small mammals has been supported by the Department of Environment and Natural Resources, Government of the Northwest Territories and is often conducted by students participating in the Tundra Science and Culture Camp hosted every summer at the Research Station.
East Bay	The work was supported by Environment and Climate Change Canada, the Polar Continental Shelf Program and the Natural Sciences and Engineering Research Council of Canada.
Karrak	The work was supported by the California Department of Fish and Game, the Canadian Wildlife Service, the Central and Mississippi Flyway Councils, the Delta Waterfowl Foundation, Ducks Unlimited Inc., the Jennifer Robinson Memorial Scholarship, the Polar Continental Shelf Program, the Sweden–America Foundation, the Swedish Polar Research Secretariat, the University of Saskatchewan and the Wildlife Research Division of Environment and Climate Change Canada.

Supplementary References

1. Efford M. 2004 Density estimation in live-trapping studies. *Oikos* **106**, 598-610. (doi:10.1111/j.0030-1299.2004.13043.x).
2. Fauteux D, Gauthier G, Mazerolle, MJ, Coallier N, Bety J, Berteaux D. 2018 Evaluation of Invasive and Non-Invasive Methods to Monitor Rodent Abundance in the Arctic. *Ecosphere* **9**, 2124. (doi:10.1002/ecs2.2124).
3. Krebs CJ. 2013 *Population fluctuations in rodents*. Chicago, The University of Chicago Press.
4. Menyushina IE, Ehrich D, Henden JA, Ims R, Ovsyanikov NG. 2012 The nature of lemming cycles on Wrangel: an island without small mustelids. *Oecologia* **170**, 363-371.
5. Cadieux MC, Fauteux D, Gauthier G. 2015 *Technical manual for sampling small mammals in the Arctic – version 1*. Université Laval, Quebec, Centre d'études nordiques; 55 p. Available at <https://bylot.cen.ulaval.ca/en/method.php>
6. Gauthier G, Bety J, Cadieux MC, Legagneux P, Doiron M, Chevallier C, Lai S, Tarroux A, Berteaux D. 2013 Long-term monitoring at multiple trophic levels suggests heterogeneity in responses to climate change in the Canadian Arctic tundra. *Philosophical Transactions of the Royal Society B-Biological Sciences* **368**, 20482. (doi:10.1098/rstb.2012.0482).
7. Krebs CJ, Bilodeau F, Reid D, Gauthier G, Kenney AJ, Gilbert S, Duchesne D, Wilson DJ. 2012 Are lemming winter nest counts a good index of population density? *Journal of Mammalogy* **93**, 87-92.
8. Gilg O, Sittler B, Sabard B, Hurstel A, Sane R, Delattre P, Hanski I. 2006 Functional and numerical responses of four lemming predators in high arctic Greenland. *Oikos* **113**, 193-216. (doi:10.1111/j.2006.0030-1299.14125.x).

9. Fauteux D, Gauthier G. 2022 Density-dependent demography and movements in a cyclic brown lemming population. *Ecology and Evolution* **12**, e9055. (doi:10.1002/ece3.9055).
10. Myllymäki A, Paasikallio A, Pankakoski E, Kanervo V. 1971 Removal experiments on small quadrats as a means of rapid assessment of the abundance of small mammals. *Annales Zoologici Fennici* **8**, 177-185.
11. Gilg O, Bollache L, Afonso E, Yannic G, Schmidt NM, Hansen LH, Hansen J, Sittler B, Lang J, Meyer N, et al. 2019 Are gastrointestinal parasites associated with the cyclic population dynamics of their arctic lemming hosts? *International Journal for Parasitology: Parasites and Wildlife* **10**, 6-12. (doi:10.1016/j.ijppaw.2019.06.011).
12. Cazelles B, Chavez M, Berteaux D, Menard F, Vik JO, Jenouvrier S, Stenseth NC. 2008 Wavelet analysis of ecological time series. *Oecologia* **156**, 287-304. (doi:10.1007/s00442-008-0993-2).
13. Stenseth NC. 1999 Population cycles in voles and lemmings: density dependence and phase dependence in a stochastic world. *Oikos* **87**, 427-461. (doi:10.2307/3546809).
14. Stenseth NC, Ims RA. 1993 Population dynamics of lemmings: temporal and spatial variation - an introduction. In *The biology of lemmings* (eds. Stenseth N.C, Ims R.A.), pp. 61-96. London, Academic Press.
15. Riggs G.A, Hall D.K. 2015 MODIS Snow Products Collection 6 User Guide. Available at <https://nsidc.org/sites/nsidc.org/files/files/MODIS-snow-user-guide-C6.pdf>
16. Dozier J. 1989 Spectral signature of alpine snow cover from the landsat thematic mapper. *Remote Sensing of Environment* **28**, 9-22. (doi:10.1016/0034-4257(89)90101-6).

17. Yin D, Cao X, Chen X, Shao Y, Chen J. 2013 Comparison of automatic thresholding methods for snow-cover mapping using Landsat TM imagery. *International Journal of Remote Sensing* **34**, 6529-6538. (doi:10.1080/01431161.2013.803631).
18. Burns P, Nolin A. 2014 Using atmospherically-corrected Landsat imagery to measure glacier area change in the Cordillera Blanca, Peru from 1987 to 2010. *Remote Sensing of Environment* **140**, 165-178. (doi:10.1016/j.rse.2013.08.026).
19. Härer S, Bernhardt M, Siebers M, Schulz K. 2018 On the need for a time- and location-dependent estimation of the NDSI threshold value for reducing existing uncertainties in snow cover maps at different scales. *Cryosphere* **12**, 1629–1642. (doi:10.5194/tc-12-1629-2018).
20. Denwood MJ. 2016 runjags: An R Package Providing Interface Utilities, Model Templates, Parallel Computing Methods and Additional Distributions for MCMC Models in JAGS. *Journal of Statistical Software*, **71**, 1-25. (doi:10.18637/jss.v071.i09.).
21. Brooks SP, Gelman A. 1998 General Methods for Monitoring Convergence of Iterative Simulations. *Journal of Computational and Graphical Statistics* **7**, 434–455. (doi:10.1080/10618600.1998.10474787).
22. Cox D.R. 2007 Applied statistics: A review. *The Annals of Applied Statistics* **1**, 1-16. (doi:10.1214/07-AOAS113).
23. Kery M., Royle J.A. 2015 *Applied hierarchical modeling in Ecology*. Amsterdam, Academic Press.
24. Dray S, Dufour AB. 2007 The ade4 Package: Implementing the Duality Diagram for Ecologists. In *Journal of Statistical Software* **22**, 1-20. (doi:10.18637/jss.v022.i04)

25. Walker DA, Raynolds MK, Daniels FJA, Einarsson E, Elvebakk A, Gould WA, Katenin AE, Kholod SS, Markon CJ, Melnikov ES, et al. 2005 The circumpolar vegetation map. *Journal of Vegetation Science* **16**, 267-285. (doi:10.1111/j.1654-1103.2005.tb02365.x).
26. Ehrlich D, Schmidt NM, Gauthier G, Alisauskas R, Angerbjörn A, Clark K, Ecke F, Eide NE, Framstad E, Frandsen J, et al. 2020 Documenting lemming population change in the Arctic: Can we detect trends? *Ambio* **49**, 786-800. (doi:10.1007/s13280-019-01198-7).
27. Virtanen R, Oksanen L, Oksanen T, Cohen J, Forbes BC, Johansen B, Käyhkö J, Olofsson J, Pulliainen J, Tømmervik H. 2016 Where do the treeless tundra areas of northern highlands fit in the global biome system: toward an ecologically natural subdivision of the tundra biome. *Ecology and Evolution* **6**, 143-158. (doi:10.1002/ece3.1837).
28. Fufachev IA, Ehrlich D, Sokolova NA, Sokolov VA, Sokolov AA. 2019 Flexibility in a changing arctic food web: Can rough-legged buzzards cope with changing small rodent communities? *Global Change Biology* **25**, 3669-3679. (doi:https://doi.org/10.1111/gcb.14790).
29. Kataev G.D. 2016 Long-term (1935-2016) monitoring of the species composition and abundance of small rodent populations in the northern taiga of Lapland. *Bulletin MOIP otdel Biol* **121**, 3-17.
30. Ekerholm P, Oksanen L, Oksanen T. 2001 Long-term dynamics of voles and lemmings at the timberline and above the willow limit as a test of hypotheses on trophic interactions. *Ecography* **24**, 555-568. (doi:10.1111/j.1600-0587.2001.tb00490.x).
31. Cornulier T, Yoccoz NG, Bretagnolle V, Brommer JE, Butet A, Ecke F, Elston DA, Framstad E, Henttonen H, Hörnfeldt B, et al. 2013 Europe-wide dampening of population cycles in keystone herbivores. *Science* **340**(6128), 63-66. (doi:10.1126/science.1228992).

32. Framstad E, Bakkestuen V, Halvorsen R, Kålås JA, Myklebost H, Nilsen E, Olsen SL, Pedersen B, Stokke B, Økland, T. 2020 *Program for terrestrisk naturovervåking (TOV)*. Dokumentasjon av overvåkingsområder, metoder og data, NINA, Norsk institutt for naturforskning.
33. Olofsson J, Tommervik H, Callaghan TV. 2012 Vole and lemming activity observed from space. *Nature Climate Change* **2**, 880-883. (doi:10.1038/NCLIMATE1537).
34. Ecke F, Christensen P, Rentz R, Nilsson M, Sandstrom P, Hörnfeldt B. 2010 Landscape structure and the long-term decline of cyclic grey-sided voles in Fennoscandia. *Landscape Ecology* **25**, 551-560. (doi:10.1007/s10980-009-9441-x).
35. Kausrud KL, Mysterud A, Steen H, Vik JO, Ostbye E, Cazelles B, Framstad E, Eikeset AM, Mysterud I, Solhoy T, et al. 2008 Linking climate change to lemming cycles. *Nature* **456**, 93-97. (doi:10.1038/nature07442).
36. Schmidt NM, Ims RA, Høy T, Gilg O, Hansen LH, Hansen J, Lund M, Fuglei E, Forchhammer MC, Sittler B. 2012 Response of an arctic predator guild to collapsing lemming cycles. *Proceedings of the Royal Society - B Biological Sciences* **279**, 4417-4422. (doi:10.1098/rspb.2012.1490).
37. Gruyer N, Gauthier G, Berteaux D. 2008 Cyclic dynamics of sympatric lemming populations on Bylot Island, Nunavut, Canada. *Canadian Journal of Zoology* **86**, 910-917. (doi:10.1139/Z08-059).
38. Flemming SA, Nol E, Kennedy LV, Bédard A, Giroux MA, Smith PA. 2019 Spatio-temporal responses of predators to hyperabundant geese affect risk of predation for sympatric-nesting species. *PloS one* **14**, e0221727. (doi:10.1371/journal.pone.0221727).

39. Samelius G, Alisauskas RT. 2017 Components of Population Growth for Arctic Foxes at a Large Arctic Goose Colony: the Relative Contributions of Adult Survival and Recruitment. *Polar Research* **36**, 6. (doi:10.1080/17518369.2017.1332948).
40. Environment and Natural Resources and Outcrop Communications. 2008 *Small Mammal Trapping (Museum Special traps)*. Government of the Northwest Territories, Yellowknife, NT. Available at <https://www.enr.gov.nt.ca/en/services/small-mammals-and-hares/survey-protocols>