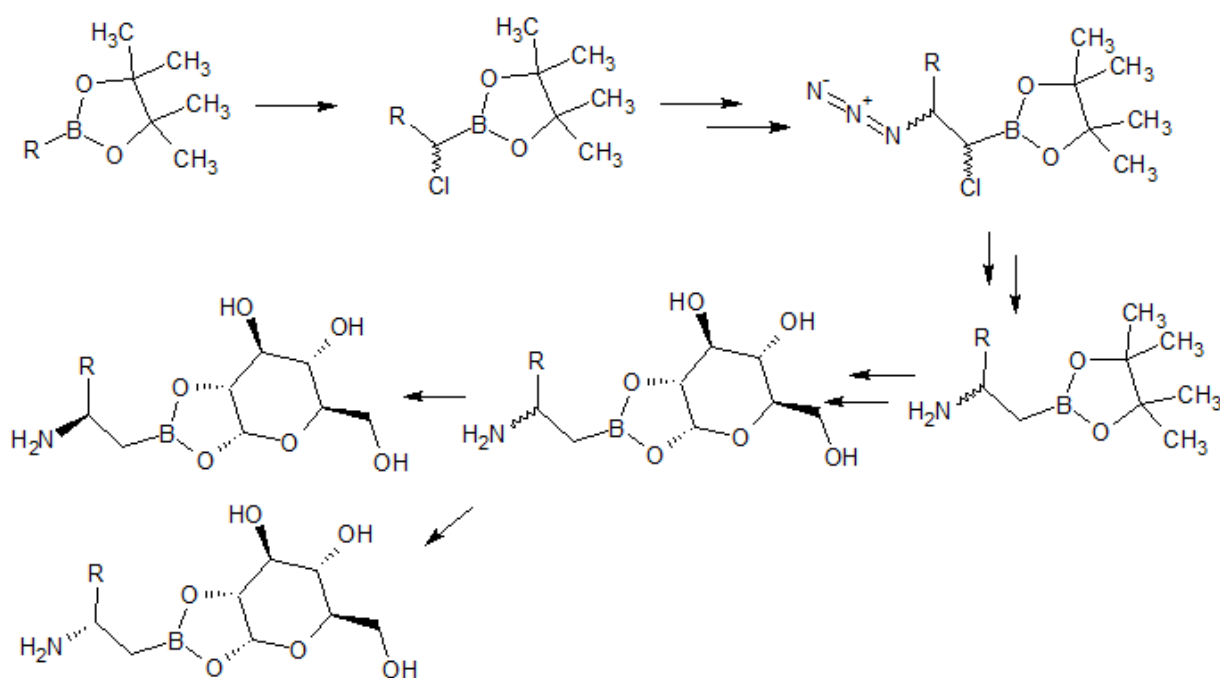


Errata

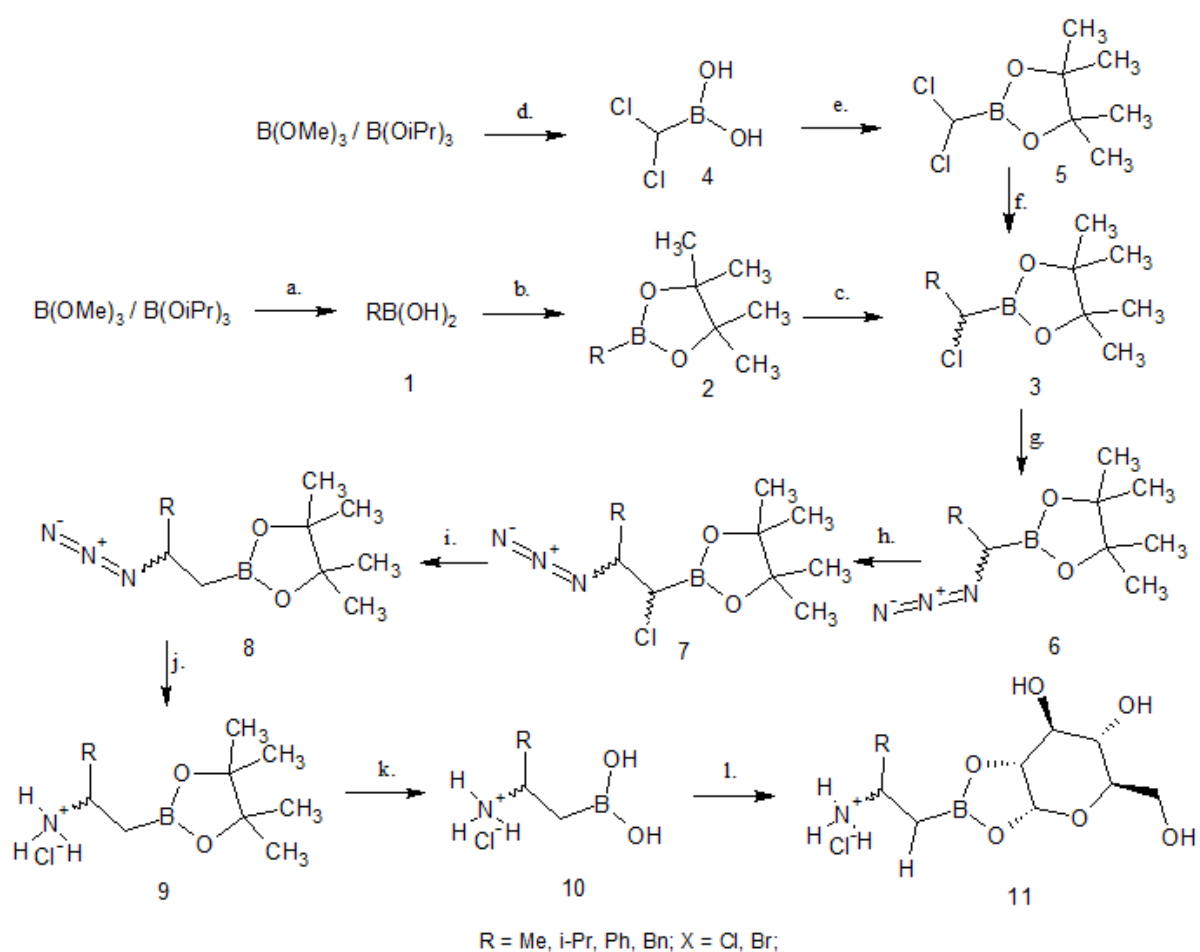
Some figural errors have been discovered in the thesis after printing. The enantiomerically pure carbohydrate α -D-glucose has in several cases been erroneously drawn with three methyl-groups where there should be hydroxyl-groups.

The errors can be found in the figures on the following pages:

Scheme 1 on page 26. The figure should be:



Scheme 6 on page 45. The figure should be:



a: 1. RMgX, Ar, Et₂O, -78 °C, 2. H⁺ b: e: pinacol, Et₂O, 24h c: h: 1. CH₂Cl₂, BuLi, Ar, THF, -100 °C, 2. ZnCl₂, -78 °C d: 1. CH₂Cl₂, BuLi, Ar, THF, -100 °C, 2. H⁺ f: 1. RMgX, Ar, THF, -78 °C, 2. ZnCl₂ g: NaN₃, (Bu)₄NBr, EtOAc/H₂O (3:1), 48h i: Li(Et)₃BH, Ar, THF, 0 °C j: 1. LiAlH₄, Ar, THF, -78 °C, 2. MeOH, H⁺ k: 1. NaIO₄, THF/H₂O (2.5:1), 2. 1M HCl l: α-D-glucose, cyclohexane, azeotropic distillation 90-100 °C, 24h.

Figure 48 on page 65. The figure should be:

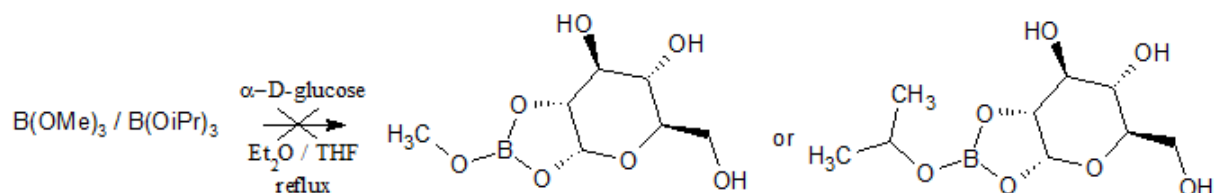
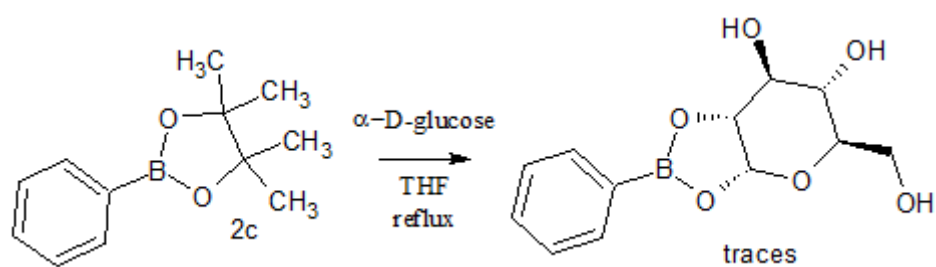
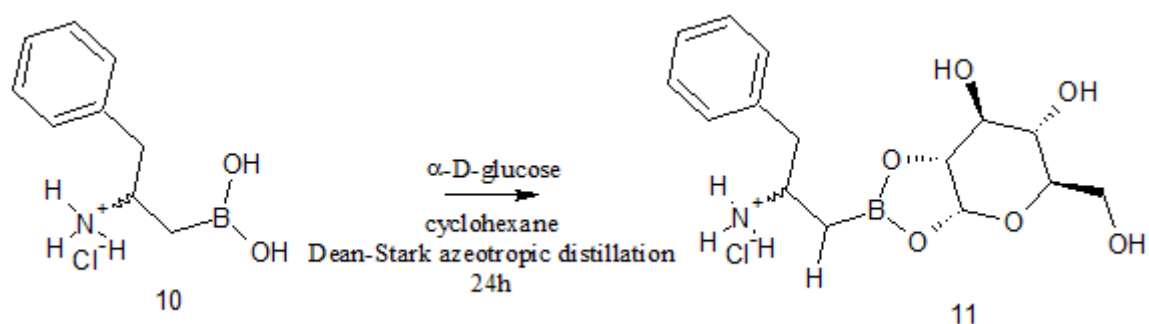


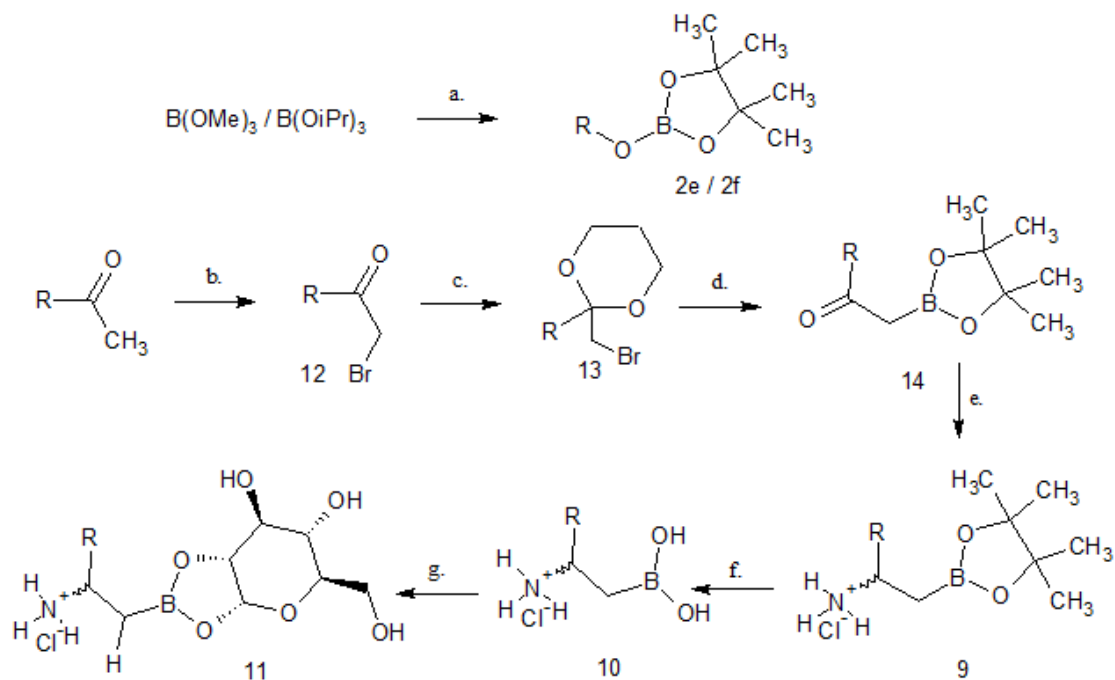
Figure 49 on page 65. The figure should be:



Scheme 17 on page 67. The figure should be:



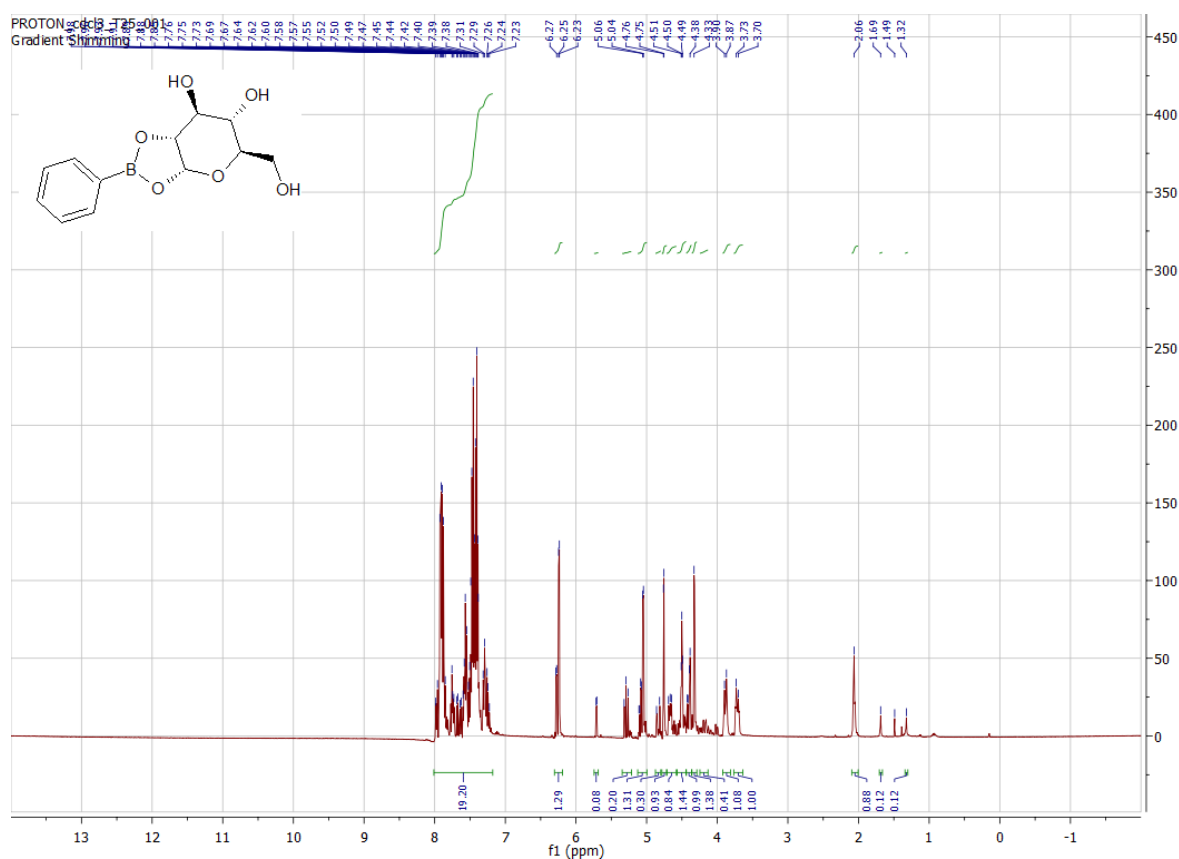
Scheme 18 on page 69. The figure should be:



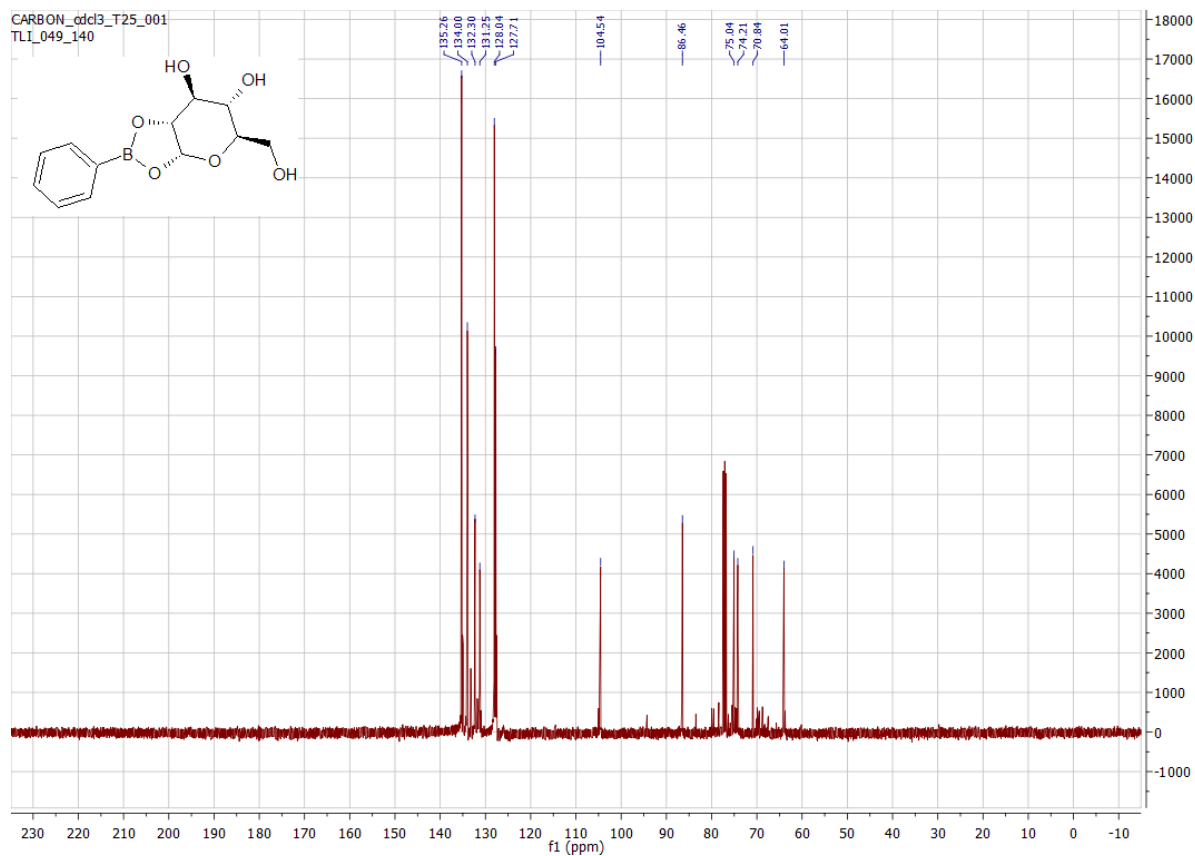
R = Me, i-Pr, Ph, Bn;

a: 1. pinacol, Et₂O, 24h b: Br₂, HOAc, 10-20 °C c: 1,3-propanediol, p-TSOH (cat.), toluene, azeotropic distillation 110-120 °C, 24h d: 1. Mg, Et₂O 2. 2e/2f 3. H⁺ e: 1. HCONH₂, H₂O, Δ, 6h 2. HCl f: 1. NaIO₄, THF/H₂O (2.5:1) 2. 1 M HCl g: α -D-glucose, cyclohexane, azeotropic distillation 90-100 °C, 24h.

Appendix 70 on page 139. The figure should be:



Appendix 71 on page 140. The figure should be:



Appendix 72 on page 140. The figure should be:

