

Cancer-associated fibroblasts from lung tumors maintain their immunosuppressive abilities after high-dose irradiation

Laia Gorchs¹, Turid Hellevik², Jack-Ansgar Bruun³, Ketil-Andre Camilio³, Samer Al-Saad^{3,4}, Tor-Brynjar Stuge³ and Inigo Martinez-Zubiaurre^{1*}

¹ Department of Clinical Medicine, University of Tromsø, Tromsø, Norway ² Department of Oncology and Radiotherapy, University Hospital of Northern Norway, Tromsø, Norway ³ Department of Medical Biology, University of Tromsø, Tromsø, Norway ⁴ Department of Pathology, University Hospital of Northern Norway, Tromsø, Norway

OPEN ACCESS

Edited by:

Joel S. Greenberger,
University of Pittsburgh Medical
Center-Shadyside, USA

Reviewed by:

Michael Wayne Epperly,
University of Pittsburgh Cancer
Institute, USA
Joel S. Greenberger,
University of Pittsburgh Medical
Center-Shadyside, USA

*Correspondence:

Inigo Martinez-Zubiaurre,
Department of Clinical Medicine,
University of Tromsø,
9037-Tromsø, Norway
inigo.martinez@uit.no

Specialty section:

This article was submitted to
Radiation Oncology, a section of the
journal *Frontiers in Oncology*

Received: 28 January 2015

Accepted: 24 March 2015

Published: 12 May 2015

Citation:

Gorchs L, Hellevik T, Bruun J-A,
Camilio K-A, Al-Saad S, Stuge T-B
and Martinez-Zubiaurre I (2015)
Cancer-associated fibroblasts from
lung tumors maintain their
immunosuppressive abilities after
high-dose irradiation.
Front. Oncol. 5:87.
doi: 10.3389/fonc.2015.00087

Accumulating evidence supports the notion that high-dose (>5 Gy) radiotherapy (RT) regimens are triggering stronger pro-immunogenic effects than standard low-dose (2 Gy) regimens. However, the effects of RT on certain immunoregulatory elements in tumors remain unexplored. In this study, we have investigated the effects of high-dose radiotherapy (HD-RT) on the immunomodulating functions of cancer-associated fibroblasts (CAFs). Primary CAF cultures were established from lung cancer specimens derived from patients diagnosed for non-small cell lung cancer. Irradiated and non-irradiated CAFs were examined for immunomodulation in experiments with peripheral blood mononuclear cells from random, healthy donors. Regulation of lymphocytes behavior was checked by lymphocyte proliferation assays, lymphocyte migration assays, and T-cell cytokine production. Additionally, CAF-secreted immunoregulatory factors were studied by multiplex protein arrays, ELISAs, and by LC-MS/MS proteomics. In all functional assays, we observed a powerful immunosuppressive effect exerted by CAF-conditioned medium on activated T-cells ($p > 0.001$), and this effect was sustained after a single radiation dose of 18 Gy. Relevant immunosuppressive molecules such as prostaglandin E2, interleukin-6, and -10, or transforming growth factor- β were found in CAF-conditioned medium, but their secretion was unchanged after irradiation. Finally, immunogenic cell death responses in CAFs were studied by exploring the release of high motility group box-1 and ATP. Both alarmins remained undetectable before and after irradiation. In conclusion, CAFs play a powerful immunosuppressive effect over activated T-cells, and this effect remains unchanged after HD-RT. Importantly, CAFs do not switch on immunogenic cell death responses after exposure to HD-RT.

Keywords: cancer-associated fibroblasts, high-dose radiation, lung cancer, tumor immunology, immunogenic cell death

Introduction

During the last decade, clinical implementation of high-dose radiotherapy (HD-RT) has revolutionized the therapeutic outcome for treatment-resistant cancers like non-small cell lung carcinoma (NSCLC). In the clinics, oligo-fractionated HD-RT regimens are often associated with stereotactic

body radiotherapy (SBRT) or stereotactic ablative body radiotherapy (SABR) (1–3). Minimal margins of normal tissue in the irradiated field combined with high-precision image-guided dose-delivery and steep dose-gradients constitute the fundament for increasing dose per fraction above the conventional 2 Gy while ensuring acceptable toxicity. An understanding of the biological consequences to HD-RT in a heterotypic cellular context is still in its infancy (4), but a thorough elucidation holds the promise of optimized and refined treatment strategies in the clinics (5).

On the ground that clinical RT is affecting a well-defined volume of heterotypic tumor tissue – and questioning the dogma that direct DNA damage to neoplastic cells is the sole mechanism for tumor control mediated by RT – researchers have instigated studies of radio-responses in different tumor compartments including both epithelial tumor cells and tumor-associated stromal cells. At present, radio-responses in the diverse population of stromal immune cells are probably the best explored of the non-malignant cells (6).

From an immunological point-of-view, the clinical success of HD-RT has been crucial for revitalizing the idea of using RT as an immunological adjuvant to improve clinical outcome (7–10). Recent findings have generated enthusiasm toward the assumption that RT and immunotherapy in combination may induce so-called abscopal off-target responses which in turn could improve not only local, but also distant, tumor control (11–14). The ambitious goal of optimizing RT-induced systemic immune-responses demands scientific efforts toward fine-tuning radiation-dose and regimens (15, 16). Several reports have already indicated that HD-RT, rather than low-dose (LD)-RT, are inducing stronger pro-immunogenic responses (17–19). Interestingly, recent experiments in mammary carcinoma cells indicate that RT indeed provokes a dose-dependent enhancement of immunogenic cell death (ICD) (20). However, it is still an open question whether RT-induction of ICD in tumor cells alone is sufficient for turning a typical immunosuppressive microenvironment into a pro-immunogenic milieu capable of initiating a systemic response.

Cancer-associated fibroblasts (CAFs) are considered one of the major cellular components of the tumor microenvironment (21, 22), and high numbers of infiltrating CAFs in the tumor tissue are generally associated with poor prognosis and treatment outcome (23, 24). In contrast to normal tissue fibroblasts, CAFs are contributing to cancer progression, essentially by the secretion of a long array of soluble paracrine factors; i.e., growth factors, cytokines, and chemokines that on one hand regulate the behavior of adjacent cancer cells (25, 26) but also mediate recruitment of inflammatory and immune cells (27), as well as bone-marrow derived progenitor cells (28, 29). However, the role of CAFs as key inflammatory and sentinel cells of the immune system is less known (30–32). In fact, through cytokine and chemokine secretion, stromal fibroblasts are efficiently mediating local immunomodulation of the tumor tissue, by directly affecting trafficking, state of differentiation and activation of the broad population of immune cells. Among other observed effects, CAFs may influence T-regulatory cells functionality by production of PGE2 (33), and can impair Th1 differentiation, CTL activation, or DC maturation by production of TGF- β (34). Moreover, some recent reports highlight the indirect effects of CAFs on immune

cell infiltration and function (35), consisting of regulation of angiogenesis, lymph-angiogenesis, hypoxia, extracellular matrix remodeling, and metabolism.

Ionizing radiation in a therapeutic setting affects concomitantly non-malignant as well as malignant tumor cells (36), thus provoking also tumor cell-extrinsic responses to treatment (8, 37–39). Hence, as one of the main cellular components of the tumor mass, CAFs are receiving the prescribed radiation dose in full during RT treatment, and the consequential biological effects of the treatment are dependent on radiation dose and fractionation (4). Of note, a single high radiation dose (18 Gy) is inducing permanent DNA damage responses in CAFs, accompanied with development of irreversible cellular senescence (40). Moreover, same radiation dose is able to influence the secretory profile of CAFs, thus affecting paracrine communication by CAFs (41). Herein, we shed light on the effects of radiation on the immunoregulatory properties exerted by CAFs.

Materials and Methods

Patients and Specimens

Lung tumor specimens were obtained from seven randomly selected patients diagnosed with NSCLC and operated at the University Hospital of Northern Norway. Tumor and donor characteristics are outlined in **Table 1**. Average age of patients included in the study was 61 years, and none of the patients were undergoing other therapy than surgery when their samples were collected. Peripheral blood samples were obtained from healthy donors attending the University Hospital of Northern Norway Blood Bank. Samples were anonymously coded and a written informed consent was obtained from all patients and healthy volunteers in accordance with the Declaration of Helsinki. The study has been approved by the Regional Ethical Committee (REK-Nord).

CAF Isolation, Characterization and Cultures

Human lung CAFs were harvested from freshly resected NSCLC tumor tissues from lung cancer patients. After surgical resection, tumor specimens were processed following a previously described protocol (40). Briefly, tumor tissues were mechanically minced into small pieces (1–1.5 mm³), followed by enzymatic digestion for 1.5 h at 37°C in 10 ml of Dulbecco's modified Eagle's medium

TABLE 1 | Donor features corresponding to the source of CAFs used for experimentation in this study.

Number	Age	Sex	Tumor type	T-size (mm)	T-stage and N-stage
Donor 1	60	F	MD-SCC	35	pT2aN0
Donor 2	67	F	MD-SCC	30	pT1bN0
Donor 3	62	F	BAA	12	pT1aN0
Donor 4	57	F	MD-AC	30	pT2aN1
Donor 5	64	F	LD-AC	30	pT1bN0
Donor 6	58	M	MD-AC	60	pT2bN0
Donor 7	60	F	BAA	6	pT1aN0

BAA, bronchio-alveolar adenocarcinoma; AC, adenocarcinoma; SCC, squamous cell carcinoma; LCC, large cell carcinoma; M, male; F, female; HD, highly differentiated, MD, middle differentiated; LD, low differentiated.

(DMEM) containing bacterial collagenase (Cat.# C-9407 Sigma-Aldrich, St Louis, MO, USA) at a final concentration of 0.8 mg/ml. Digested tissue was spun down to eliminate collagenase, and resuspended in fresh growth medium (DMEM) supplemented with 10% fetal bovine serum (FBS) (Cat. # S0115 Biochrom, Berlin, Germany). Pure fibroblast cultures were obtained by selective cell detachment from the primary culture mix, using Enzyme-free cell detachment solution (Cat. # S-014-B EMD Millipore, Norway) and continued cell propagation in the presence of 10% FBS. Cells were grown at 3% oxygen for a short culture period (until passage two). Resulting cell cultures were characterized for purity and cell identity by flow cytometry using fluorescein isothiocyanate (FITC)-conjugated anti-human α -smooth muscle α -actin antibody (Cat. # ab8211 Abcam, Cambridge, UK), and by immunofluorescent staining with anti-human fibroblasts activation protein (FAP) antibody (Cat. # ab53066 Abcam, Cambridge, UK) on formalin-fixed CAF-cultures (40). Immediately after determining purity, cells were harvested, counted, and cryopreserved in DMEM (Cat. # D6046 Sigma-Aldrich, St Louis, MO, USA) with 10% Dimethyl sulfoxide (DMSO) and 20% FBS at 5×10^5 cells per cryotube until analysis. Before experimentation, cells were thawed in complete medium consisting of DMEM with 10% FBS and 1% penicillin-streptomycin (Cat. # P0781 Sigma-Aldrich, St Louis, MO, USA) and seeded in T-75 culture flasks.

Preparation of CAF Conditioned Medium

At the third passage, CAFs were seeded at 4×10^5 cells per T-75 tissue culture flasks and incubated 24 h (at 37°C) for attachment. After initial cell attachment and spreading, cultures were washed with PBS and new medium (6 ml) was replaced and cultures irradiated (1×18 Gy), as previously described (40). Conditioned medium (CM) from irradiated and control CAFs were collected between days 3 and 6 post-irradiation. Cell-density was 4×10^5 cells/ml at the time of media collection. Supernatants were spun down by centrifugation at $2200 \times g$ for 5 min and then filtrated through a 0.45 μ m filter for elimination of contaminant cell bodies. The resulting conditioned medium was either used immediately for experimental analysis or frozen at -80°C for further analysis.

Isolation and Culturing of Human PBMCs

Peripheral blood mononuclear cells (PBMCs) from healthy volunteers were isolated using a Lymphoprep™ density gradient (Cat. #1115754 Axis-Shield, Oslo, Norway), and following standard procedures. Briefly, peripheral blood was diluted (1:1) in PBS and layered over a Lymphoprep™ gradient, followed by 30 min of centrifugation at $700 \times g$ at room temperature and without breaks. To remove platelets from peripheral blood, PBMCs from the resulting gradient-interface were collected using a Pasteur pipette, washed three times with 40 ml of 0.2% PBSA (0.2% bovine serum albumin in PBS), and spun down at $350 \times g$ for 10 min at room temperature. Purified PBMCs were counted and frozen down in 90% FBS with 10% DMSO at 5×10^7 cells per cryotube. Before analysis, PBMCs were thawed in complete medium consisting of Iscove modified Dulbecco medium (IMDM) (Cat. # BE12-722F Lonza FWO-Vlaanderen, Belgium) with 10% FBS and 1% penicillin-streptomycin, and cultured in T-75 culture flasks at 37°C, in a 7.5% CO₂ humidified atmosphere.

Lymphocyte Proliferation Assays

Rates of T-cell proliferation were assessed using the carboxyfluorescein succinimidyl ester (CFSE) dilution assay. Cultured PBMCs were washed in PBS by centrifugation at $400 \times g$ for 4 min, and resuspended in 0.5 ml of PBSA (0.2%) and CFSE (Cat. # C34554 Molecular Probes, Life technologies, CA, USA) at 5 μ g/ml, followed by incubation at 37°C for 15 min, and immediate cooling on wet ice and dilution in 10 ml of cold IMDM. In coculture experiments, irradiated and non-irradiated CAF cultures were established in 24-well plates, and CFSE-labeled PBMCs were added at a density of 10^6 live cells per well. Immediately after initiation of cocultures, cells were exposed to the mitogen phytohemagglutinin (PHA) (1 μ g/ml) (Cat. # 1249738 Roche, Penzberg, Upper Bavaria, Germany). Mixed cultures were incubated for 5–6 days at 37°C, with 50% medium replacement on day 3. Similar procedures were carried out for experiments with CAF-CM, but instead of cells, CAF-CM was diluted (1:1) with fresh pre-warmed lymphocyte growth medium. Following incubations, PBMCs were harvested, centrifuged at $400 \times g$ for 4 min, and resuspended in 0.5 ml PBS. CFSE fluorescence was analyzed on a FACSCalibur™ (Becton Dickinson) flow cytometer, and flow cytometric data were analyzed by FlowJo (TreeStar, Ashland, OR, USA) software.

Multiplex Protein Arrays (Luminex)

Quantitative measurements of cytokines and inflammatory factors released into the culture medium were performed using a suspension array technique. Supernatants from CAFs, PBMCs, or cocultures were prepared as previously described, thawed and analysed using a human cytokine 10 Plex panel kit (Cat. # LHC001 Invitrogen, Life technologies, Frederick, MD, USA) according to the manufacturer's protocol. All samples were analyzed in duplicates and in dilutions of 1:4. Levels of proteins included in the array were detected using the Bio-Plex® 200 system (Bio-Rad laboratories, CA, USA), according to instructions from the manufacturer. Data were processed using Bio-Plex Manager™ 6.0 Software (BIO-RAD, CA, USA).

Quantitative Protein Measurements by ELISA

Concentrations of PGE2 (Cat. # 500141 Cayman Chemical, Ann Arbor, MI, USA), TGF- β (Cat. # DY240-05 R&D Systems, Minneapolis, MN, USA), and indoleamine 2,3-dioxygenase (IDO) (Cat. # SEB547 Mu Cloud-clone corp., Houston, TX, USA) in the conditioned media from irradiated and non-irradiated CAFs, prepared as described above, were determined using ELISA kits according to the manufacturer's instructions.

Mass Spectrometry-Based Proteomics

Cancer-associated fibroblasts conditioned medium from irradiated and non-irradiated cells were collected between days 3 and 6 post-treatment, concentrated in VIVASPIN centrifuge tubes (3000 MW cutoff) (Cat. # Vs0612 Startorius Stedim, Goettingen, Germany) by spinning at $2200 \times g$ for 30 min, and run in 1D SDS-PAGE to clean samples from salts and other non-protein solutes. Upon staining of gels with Coomassie Blue, the entire band spectrum was excised into three gel fractions. After excision, gel bands were subjected to in-gel reduction, alkylation, and digestion using 2–10 ng/ μ l trypsin (V511A; Promega, Madison,

WI, USA) (41). OMIX C18 tips (Varian, Inc., Palo Alto, CA, USA) were used for sample cleanup and concentration. Peptide mixtures containing 0.1% formic acid were loaded onto a Thermo Fisher Scientific EASY-nLC1000 system and EASY-Spray column (C18, 2 μm , 100 \AA , 50 μm , 15 cm). Peptides were fractionated using a 2–100% acetonitrile gradient in 0.1% formic acid over 50 min at a flow rate of 250 nl/min. Separated peptides were analyzed using a Thermo Scientific Q-Exactive mass spectrometer. Data were collected in data dependent mode using a Top10 method.

Raw data were analyzed by the MaxQuant (version 1.5.0.30) and the Proteome Discoverer 1.4 software. Fragmentation spectra were searched against the SwissProt (version 2011_12) database using an in-house Mascot server (Matrix Sciences, UK). Peptide mass tolerances used in the search were 10 ppm, and fragment mass tolerance was 0.02 Da. Peptide ions were filtered using a false discovery rate (FDR) set to 1% for peptide identifications. Protein identities in the MaxQuant software were determined using the Andromeda module, and by searching against the Uniprot Human database. Label-free protein quantification (LFQ) was also executed with the MaxQuant software. The generated list of proteins resulting from the MaxQuant software was filtered for contaminants and reverse hits in Perseus. Logarithms (\log_2) of the LFQ intensities were calculated, and average values for irradiated ($n=6$) and control ($n=6$) samples were presented with SD. Proteins appearing with less than six measurements were discarded.

Migration Assays

Chemotactic responses of activated lymphocytes were measured by a Boyden chamber assay. Briefly, PBMCs dissolved in growth medium were activated with PHA 24 h prior to starting the assay, and then 100 μl of cell suspension (containing 1×10^6 cells) was added on the top chamber of Transwell culture inserts (6.5 mm diameter, 8 μm pores, Cat. # CLS3464, Sigma-Aldrich, St. Louis, MO, USA). Bottom chambers were filled with 600 μl of fresh fibroblast growth medium or with CM from irradiated and non-irradiated CAF cultures, in the presence or absence of SDF-1 (50 ng/ml) (Cat. # 300-28A PeProTech, Oak Park, CA, USA). After 2 h, all PBMCs invading the lower chamber were harvested, centrifuged at $400 \times g$ for 4 min, resuspended in 0.5 ml of PBSA, and counted with FACSCalibur™ (Becton Dickinson) flow cytometer for 60 s at high flow rate. The lymphocyte population was gated on the forward and side scatter.

ATP Release Assay

Extracellular release of ATP from non-irradiated (0 Gy) and irradiated CAFs (1 \times 18 Gy) was measured at different time points, using the luciferin-based ENLITEN ATP assay (Cat. # FF2000 Promega, Madison, USA). Briefly, CAFs of two randomly selected donors were seeded in duplicate per time point, with density of 40,000 cells per well in a 24-well plate, and kept at 37°C. Supernatants were collected at 1, 6, and 24 h post-irradiation and centrifuged at $2200 \times g$ for 5 min. ATP-driven bioluminescence was assessed on a luminometer microplate reader (LabSystems Luminoskan). A positive control was prepared by lysing unirradiated CAFs with 0.1% Triton X-100 for 10 min.

HMGB-1 Detection by Western Blotting

Cancer-associated-fibroblast-supernatant HMGB-1 levels from irradiated and non-irradiated cultures, prepared as previously described, were analyzed by Western blotting at different time points. CAF-CM was collected 1, 6, 24, and 120 h after irradiation and concentrated using VIVASPIN centrifugation tubes (Cat. #Vs0612 Startorius Stedim Goettingen, Germany). Samples were then boiled in a reducing NuPAGE LDS sample buffer, resolved on NuPAGE Novex 4–12% Bis-Tris gels, and electrotransferred onto a polyvinylidene difluoride (PVDF) membrane (Millipore, Norway). Membranes were hybridized with anti-HMGB1 antibody (rabbit polyclonal to HMGB1-ChIP grade, Abcam, UK), followed by HRP-conjugated secondary antibody labeling (goat polyclonal anti-rabbit IgG, Abcam, UK). Reactions were developed by the Western Blotting Luminol reagent (sc-2048; Santa Cruz Biotechnology, USA) according to the manufacturer's instructions. Cell lysates were collected in a Mastermix containing a 2 \times NuPAGE LDS Sample buffer (Invitrogen, Norway), and a 1 \times NuPAGE Sample Reducing Agent (Invitrogen, Norway) was used as a positive control.

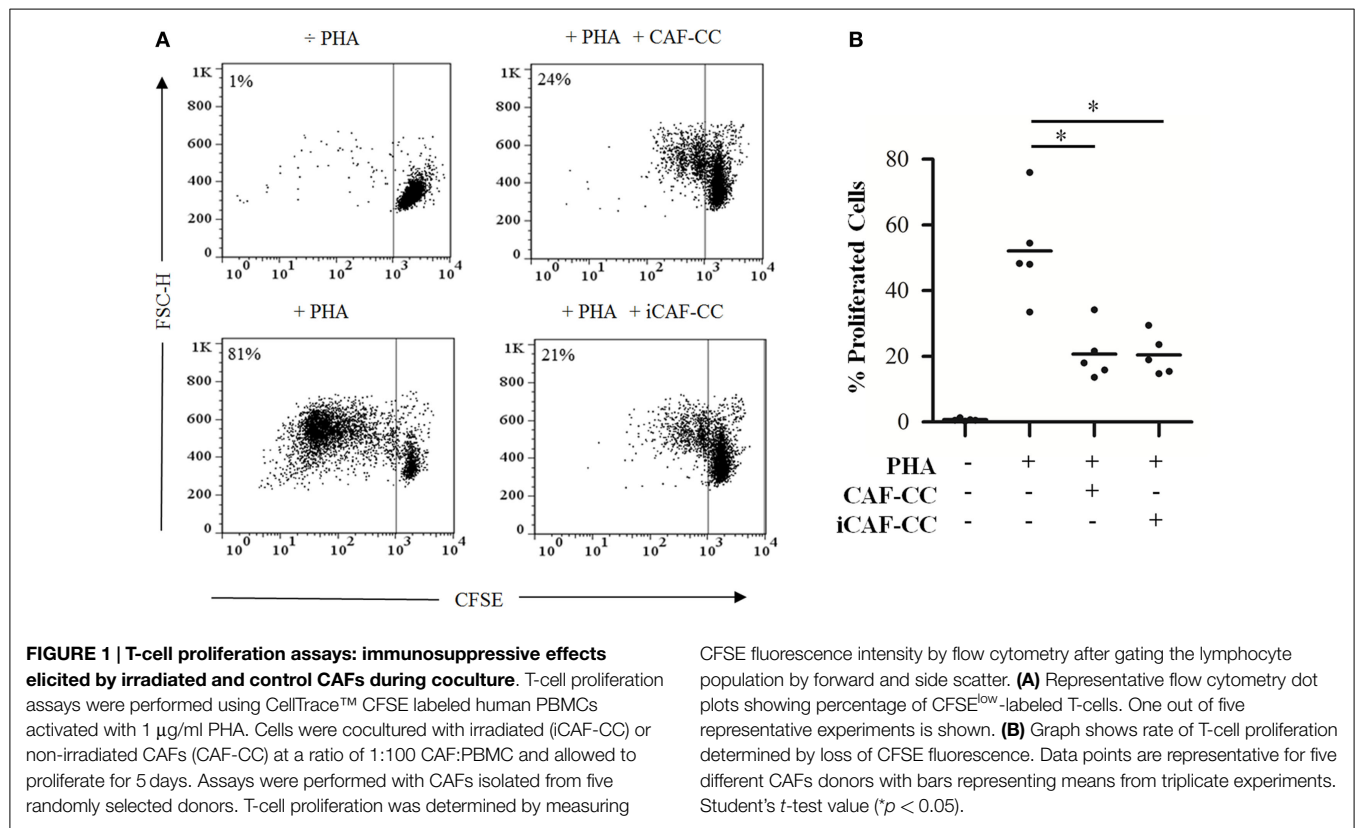
Statistical Analysis

Values are expressed as means with SEM or SD as indicated. In Multiplex protein arrays and ELISAs, only readings above the detection limit of the assay are represented in figures. Data were analyzed using paired Student's *t*-test, and *p*-values <0.05 denoted the presence of statistically significant differences. All statistics were determined with Graph pad prism version 5.00 for Windows (Graphpad).

Results

Prominent immunosuppressive abilities from CAFs have been suggested in previous studies performed in immunocompetent animal models (32). Based on this premise, we initially checked whether we could reproduce such effects in functional assays *in vitro*, and whether HD-RT affects in some way the potential immunoregulatory functions of CAFs. To this end, we performed T-cell proliferation assays comprising PHA-activated lymphocytes in coculture with irradiated (iCAF) or non-irradiated CAFs (Figure 1). Indeed, CAFs exerted a potent immunosuppressive effect on proliferating T-cells in a donor-independent manner, and this effect was similar between irradiated and non-irradiated CAFs.

Several reports have suggested that the immunoregulatory properties of CAFs are mediated via the release of soluble factors that directly or indirectly affect lymphocyte activation and/or recruitment (35, 42). We thus explored if the same immunosuppressive effects observed during CAFs-lymphocytes cocultures could be reproduced by using only the CM (Figure 2). Results showed that the inhibitory effect was indeed mediated via paracrine signaling, since similar effects could be reproduced by CAF-CM, and almost identical outcomes were observed with both irradiated and non-irradiated cells. Of importance, in these experiments we were checking also whether low-dose fractionated radiation had same or different outcomes as compared with high-dose radiation. In fact, immunosuppressive effects remained unperturbed under both radiation regimens.



To further explore the immunosuppressive functions of CAFs and iCAF, we checked the expression of effector cytokines by activated T-cells exposed to CAF-CM (**Figure 3**). In line with our initial observations, culture supernatants of both irradiated and non-irradiated CAFs were able to efficiently inhibit secretion of the immunoregulators IFN- γ and TNF- α in a similar way. Of note, neither IFN- γ nor TNF- α could be detected in supernatants of CAFs or iCAF.

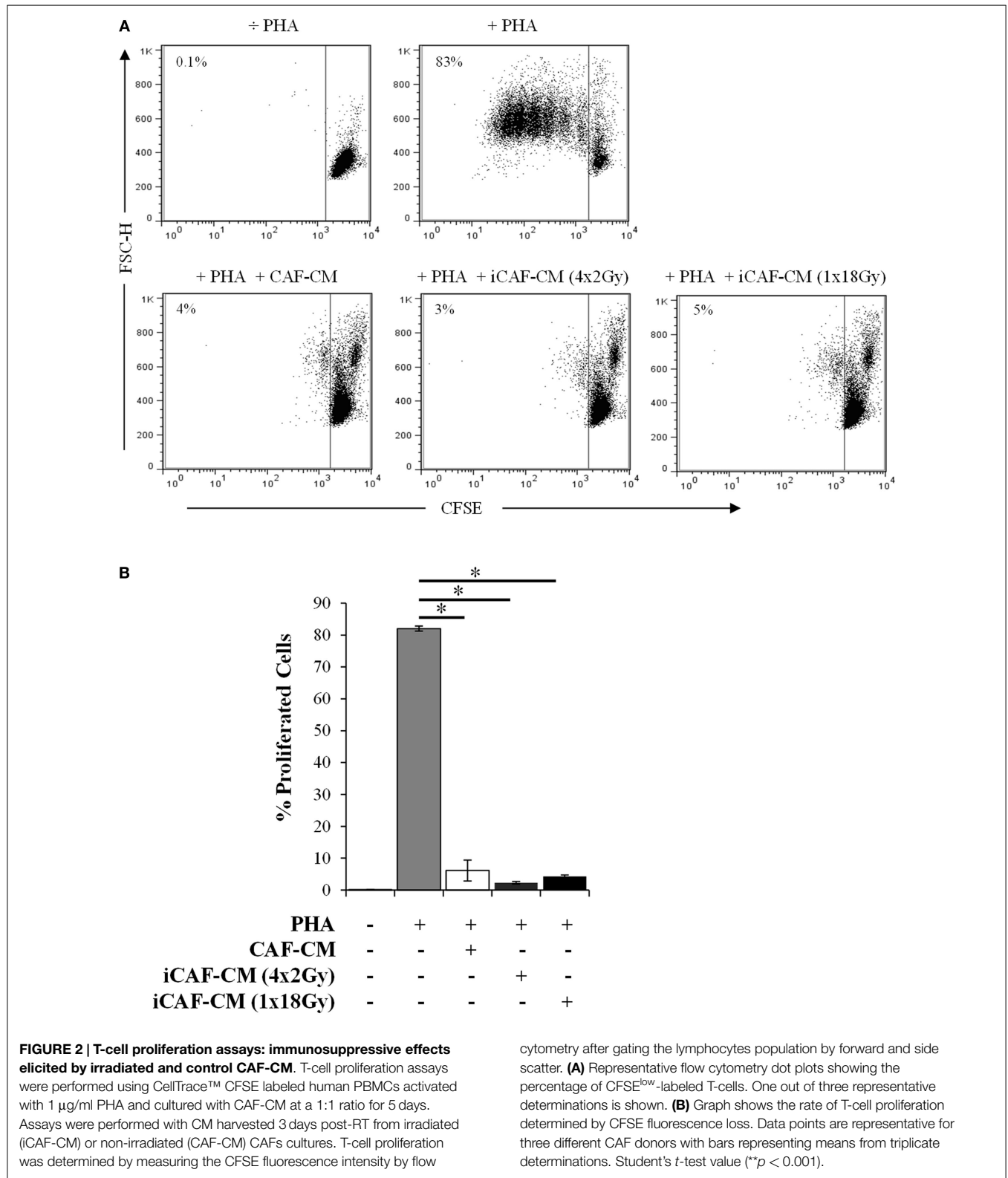
To our knowledge, CAF-mediated effects on lymphocyte migratory functions have not been studied previously. Given the striking suppressive actions achieved with CAF-CM on T-cell activation, we checked whether supernatants from CAFs and iCAF could influence the migratory abilities of lymphocytes in Transwell insert systems (**Figure 4**). The effects were checked in the presence or absence of the potent leukocyte chemoattractant stromal-derived factor 1 (SDF-1). In line with the preceding findings, supernatants from CAFs and iCAF could equally block migration of lymphocytes exposed to SDF-1. Of importance, this effect could only be reproduced if the lymphocytes were pre-activated with PHA before the migration assay.

To deepen our understanding on the potential CAF-derived soluble mediators behind the observed effects, we quantified the expression of acknowledged immunosuppressive molecules in the culture medium from CAFs and iCAF by immunobased assays (**Figure 5**). Anti-inflammatory molecules such as interleukin (IL)-10 or IDO were not detected in CAF supernatants; however, other important immunoregulators such as IL-4, TGF- β , or PGE2 were detected in the culture medium, but at relatively low

levels. The results show approximately same amounts of all three factors in supernatants from both irradiated and non-irradiated cells.

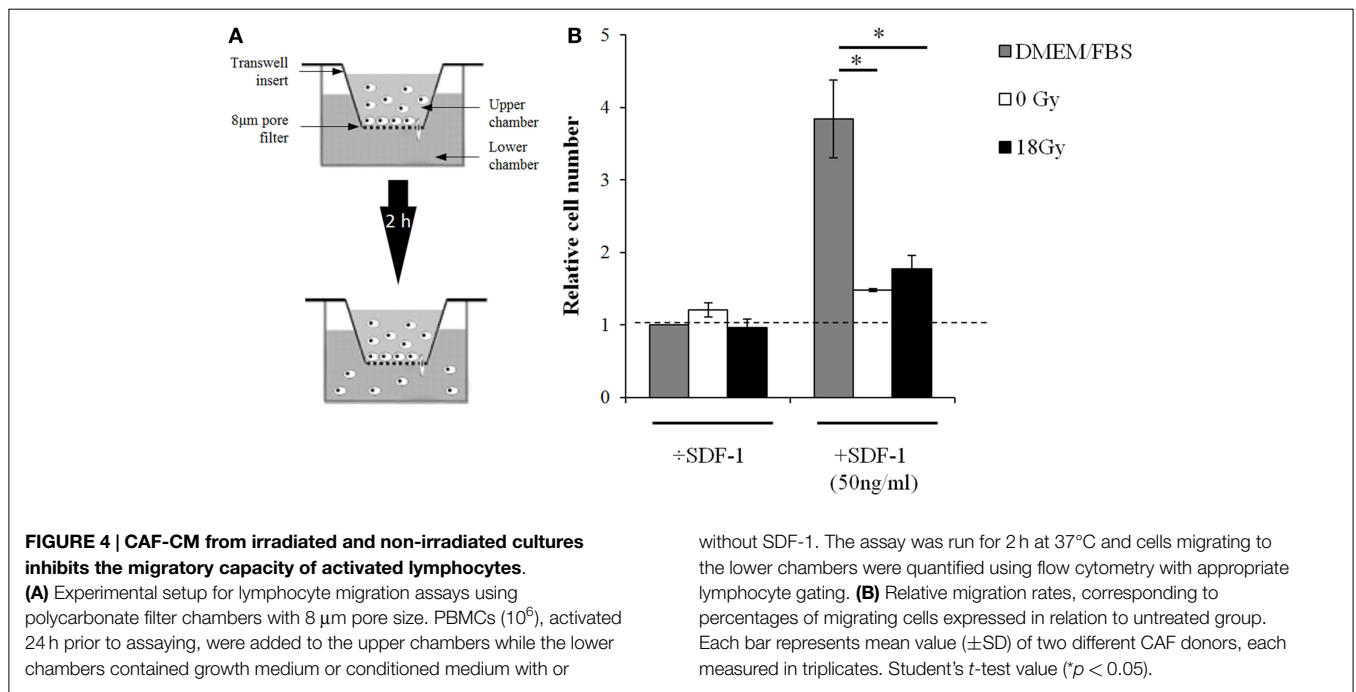
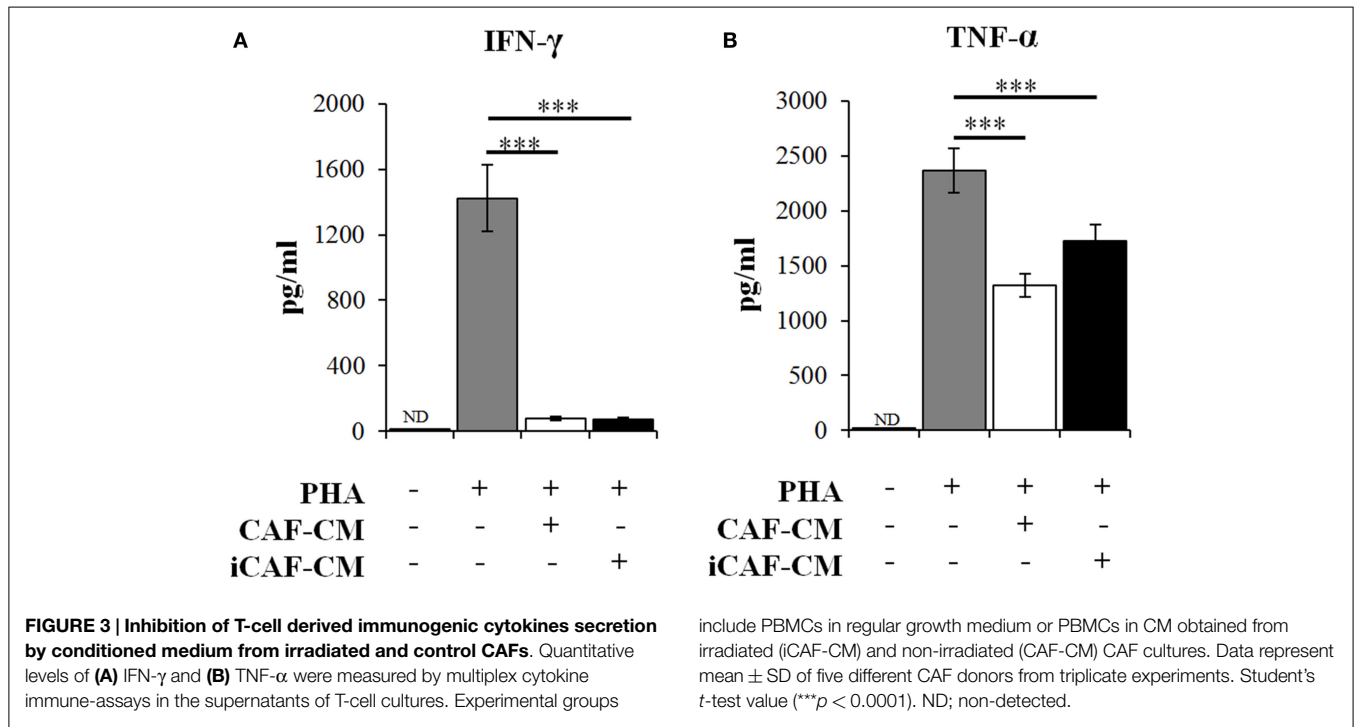
Our study of CAF-derived soluble signals with immunoregulatory potential was then broadened by applying LC-MS/MS proteomics on concentrated cell culture supernatants. Protein identification and classification was achieved through computational analysis, including bioinformatics and systems biological interpretation of results. Biological pathways and protein functions including cell communication, immunosystem processing, and secretion were annotated by Gene Ontology Biological Process in Perseus. Proteomic analyses of the secretome from the six donors gave a total yield of 978 identified proteins, of which 261 had relevant inflammatory or immunomodulatory functions. Full list of identified proteins from each donor is included in the Table S1 in Supplementary Material. From the last mentioned group, a selection of 35 immunoregulatory proteins, which could be quantified in supernatants from at least two of the donors, was further used for comparative analyses. LFQ intensities of each protein were calculated by the MaxQuant software, and average expression values from all six donors were determined. As shown in **Figure 6**; no significant changes were observed between controls and irradiated cells in any of the 35 selected proteins.

HD-RT has been shown to enhance ICD responses in different types of cancers (20). Given the increasing attention put on ICD responses exerted by radiotherapy (43), we aimed at addressing whether also CAFs turn on ICD mechanisms after exposure to high-dose irradiation. ICD is characterized by the



release of danger signals or alarmins from damaged or dying cells, including molecules such as ATP and high motility group box-1 (HMGB-1) (44). We thus explored the presence of ATP and HMGB-1 in the culture medium from CAFs collected at different

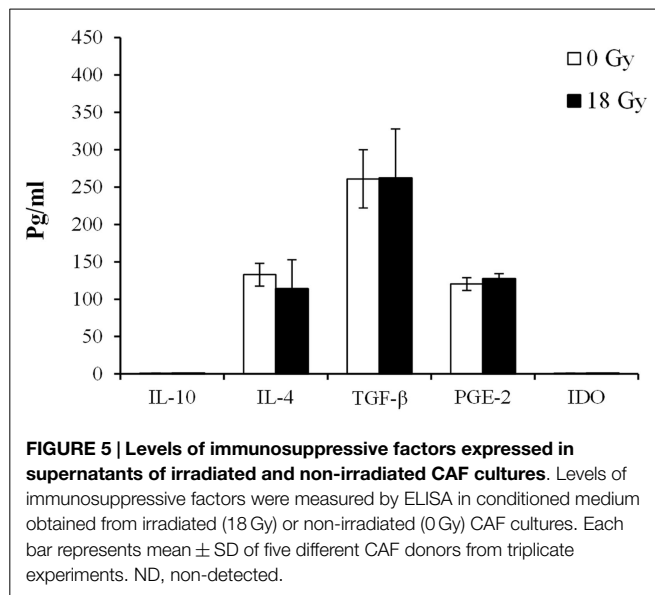
time points post-irradiation (1 × 18 Gy) (Figure 7). Our results clearly demonstrate that CAFs do not turn on ICD mechanism after exposure to HD-RT, as neither ATP nor HMGB-1 could be detected in the conditioned medium.



Discussion

High-dose radiotherapy is increasingly being used in the clinics for treatment of solid malignancies, and this approach is associated not only with higher rates of loco-regional tumor control but also with the induction of secondary effects which influence therapy outcomes, such as changes in the vasculature and the immune status of tumors (4). However, the effects of

radiation in key non-malignant cellular components of tumors have not received much attention. In this study, we aimed at uncovering the responses of tumor fibroblasts (CAFs) to HD-RT in relation to their function as regulators of tumor immunity. Three main observations can be highlighted from our study: (i) CAFs display a powerful immunosuppressive effect over T-cells, affecting both their function and migration rates; (ii) Neither HD-RT (1×18 Gy) nor LD-RT (4×2 Gy) is influencing the



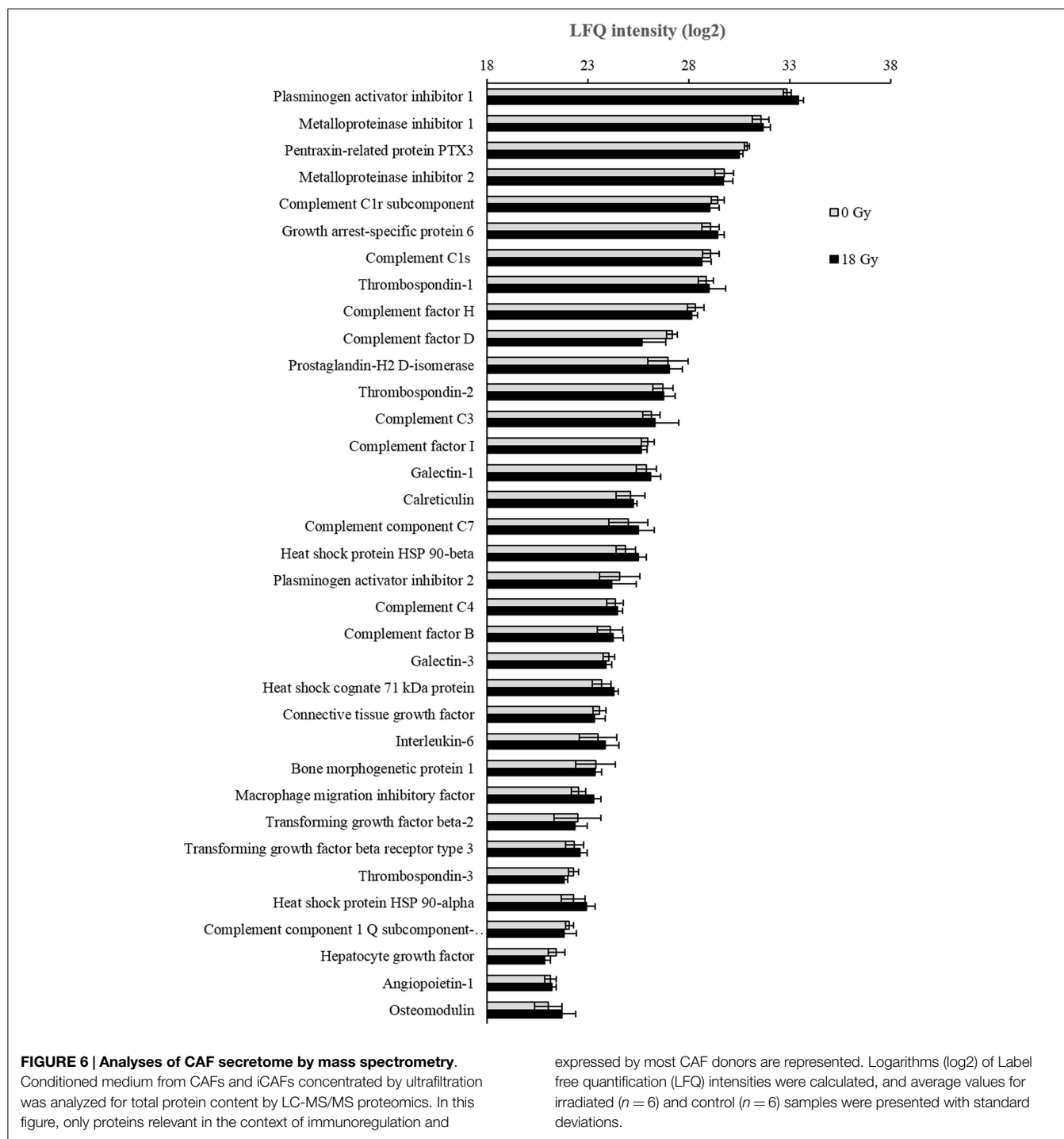
immunosuppressive functions of CAFs *in vitro*; and (iii) HD-RT do not ignite ICD responses in CAFs.

Ionizing radiation modifies the tumor cell phenotype and induces a tumor microenvironment that fosters innate and adaptive immune responses. At high doses, RT enhances tumor cell injury and the release of proteins from inside the cells that may alert the immune system. Concomitantly, HD-RT has been associated with an increased surface expression of molecules by tumor cells with immuno-modulating functions such as MHC class I (45), ICAM-1, and the death receptor CD95 (46). On the other hand, the activation status of inflammatory cells may also be altered by radiation. Previous reports have suggested that HD-RT favors the presence of type-2 macrophages with tolerogenic functions, an effect associated with induction of immune inhibitory molecules such as COX-2/PGE-2 (47). Whereas low-dose irradiation may redirect macrophage differentiation from the immunosuppressive state (type-2) to one that enables recruitment of cytotoxic T-cells. Also, LD-RT has been shown to reduce the production of reactive oxygen species and the activity of inducible nitric oxide synthase by activated macrophages (48). Despite the accumulating literature on the immunomodulatory effects exerted by radiotherapy on the different cellular components in malignancies, it remains unexplored how CAFs respond to radiotherapy in regard to their important immunoregulatory roles. In this work, we disclose that neither HD-RT, given as a single fraction of 18 Gy (clinically relevant dose in the context of SABR), nor LD-RT, given as fractionated small doses (clinically relevant in the context of conventional RT), is altering the immunoinhibitory functions of CAFs.

The role of CAFs as immunoregulatory cells in tumors has been studied to some extent in the past; however a general consensus on the ultimate role played by these cells on local immunoreactions is still lacking. Animal studies, like the ones by Kraman et al. (32) or Liao et al. (49), highlighted already some years ago the important role played by CAFs as crucial immunosuppressive cells, emphasizing the capacity of CAFs to influence immune polarization

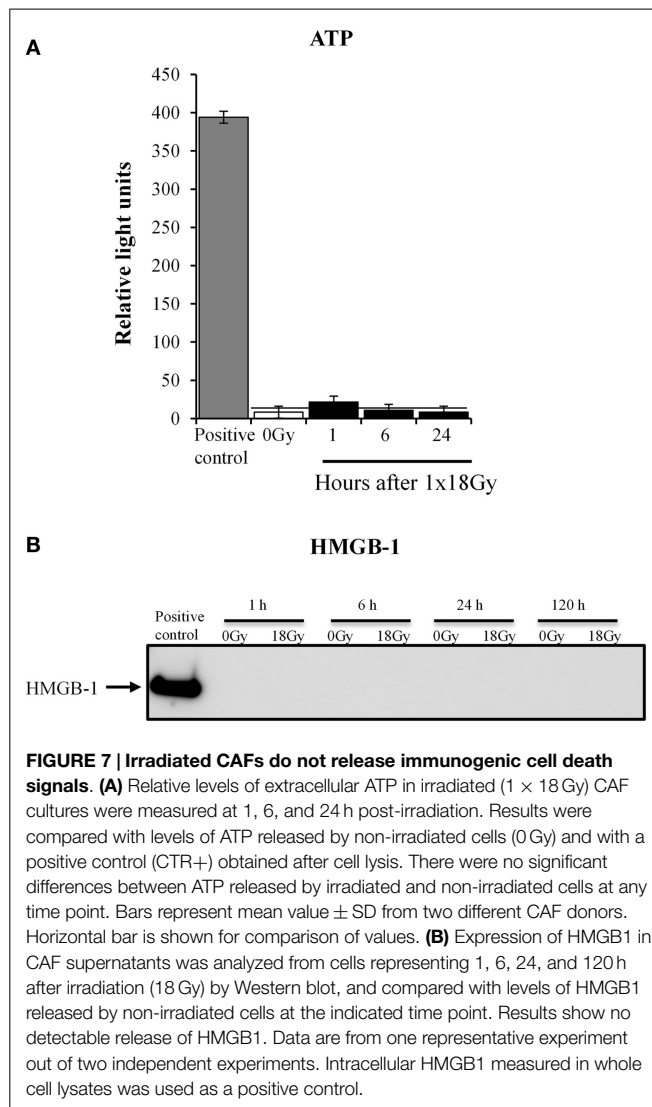
toward a permissive, tumor-promoting microenvironment (32, 49). However, this view has later on been challenged by other studies, which demonstrate CAF-mediated anti-tumor immune responses in pancreas cancer (50), or a bidirectional role observed with CAFs from non-small cell lung cancer in coculture experiments with tumor-associated T-cells (42). To ascertain the role played by CAFs as immunoregulators in our system, we initially ran T-cell proliferation assays in coculture conditions with CAFs. Our results showed a very clear and reproducible inhibitory effect exerted by CAFs. Of note, this effect was basically identical for both non-irradiated and irradiated CAFs, and independent on the radiation dose and fractionation schedules applied. Additionally, we observed that the effect is primarily mediated via release of paracrine signals, since very similar results were reproduced by only using the CM. Our *in vitro* functional studies also included effector cytokine expression by T-cell assays and migration assays. Both sets of experiments reinforced the initial observation on CAF-mediated immunosuppressive actions, and bring out the fact that CAFs are able to down-regulate both the activation status and the migration (or recruitment) of PHA-activated T-cells. Of importance, in all functional assays, radiation exposure of cells did not contribute to variations on the observed effects.

Through the production of miscellaneous soluble signals including chemokines, cytokines, and extracellular matrix molecules, CAFs are able to influence the trafficking and activation status of T-lymphocytes. Acknowledged immunosuppressive molecules produced by CAFs include TGF-β1 (34), PGE2, IDO (33), or tenascin-C. All these molecules exert a direct negative effect on the acquisition and the expression of T-cell effector functions. Additionally, some of these factors are also known to deactivate or suppress NK cells. Moreover, CAFs may contribute to the accumulation and/or differentiation of regulatory T-cells in tumors through the expression of TGF-β (51) or the chemokine CCL5/RANTES (52). In our study, we have checked the expression of some of the mentioned proteins as well as other recognized immunosuppressive molecules by quantitative approaches. Signaling molecules such as IL-4, TGF-β, and PGE2 could be readily detected in CAF cell culture supernatants; however, their expression remained unchanged after exposure to a radiation-dose of 18 Gy. Additionally, the CAF secretome was analyzed by a proteomic approach. Mass spectrometry data put forward a list of more than 260 proteins released by CAFs with immunomodulatory functions. Interestingly, we identified several complement components and also well-known inflammatory regulators such as IL-6, prostaglandin H2, and macrophage colony-stimulating factor (CSF-1). Of note, immunomodulators such as pentraxin and galectin-3 could be identified in the culture media of both CAFs and iCAF. These molecules represent interesting leads for further investigation of the mechanism behind the CAF-mediated immunoregulatory actions. The overall findings on soluble signal molecules are in agreement with our observations in the functional assays no differences were found on immunosuppressive functions between irradiated and non-irradiated cells. However, it is still undefined which CAF-derived factor, or combination of factors, is ultimately responsible for the inhibitory effect observed on T-lymphocytes.



HD-RT is associated with increased tumor-antigen expression and the induction of necrotic forms of tumor cell death. Consequently, intracellular proteins naturally occurring in the nucleus, organelles, or the cytoplasm are released. Such molecules operate as damage-associated molecular patterns (DAMPs) or alarmins (53), and have the potential to prime the immune system and mount an immune attack. This phenomenon is now defined as

ICD (20, 54). Well-studied danger signals include release of the DNA binding protein HMGB-1, cytosolic ATP, the stress factor heat-shock protein 70, and the plasma membrane translocation of endoplasmic reticulum-associated calreticulin. Again, existing literature on ICD-responses in the context of radiation have essentially considered responses from dying tumor cells; however, no attention has been paid to the contribution of CAFs in this matter.



Here, we report for the first time that HD-RT does not trigger ICD in human CAFs, as no release of ATP or HMGB-1 could be measured in CAF-CM at any time point.

Still, much of the complex interactions between stromal fibroblasts and the different arms of the immune system in cancers

References

- Kavanagh BD, Miften M, Rabinovitch RA. Advances in treatment techniques: stereotactic body radiation therapy and the spread of hypofractionation. *Cancer J* (2011) 17:177–81. doi:10.1097/PPO.0b013e31821f7dbd
- Timmerman RD, Herman J, Cho LC. Emergence of stereotactic body radiation therapy and its impact on current and future clinical practice. *J Clin Oncol* (2014) 32:2847–54. doi:10.1200/JCO.2014.55.4675
- Zeng J, Baik C, Bhatia S, Mayr N, Rengan R. Combination of stereotactic ablative body radiation with targeted therapies. *Lancet Oncol* (2014) 15:e426–34. doi:10.1016/S1470-2045(14)70026-9
- Hellevik T, Martinez-Zubiaurre I. Radiotherapy and the tumor stroma: the importance of dose and fractionation. *Front Oncol* (2014) 4:1. doi:10.3389/fonc.2014.00001

remain unknown. By using fresh human material, we show here that CAFs from NSCLC exert powerful immunosuppressive effects on T-lymphocytes. In our laboratory, we are currently making efforts to track down the CAF-derived soluble factors responsible for this effect. Of importance, HD-RT, which is able to induce cellular senescence and other important phenotypic changes on CAFs, do not affect the immunoregulatory actions of these cells. Moreover, HD-RT, which is known to induce ICD-responses in dying tumor cells, does not trigger ICD in CAFs. We present here important new clues that help us understand the overall responses of tumor constituents to radiotherapy, and we believe that our data should be taken into account at the time of considering HD-RT as an immunoadjuvant in clinical settings.

Author Contributions

LG has been implicated in most experimental work, conducting all functional assays, and protein determination assays. TH has established and conducted protocols for irradiating cells and helped drafting the manuscript. JB has been involved in proteomic part of the study, including data collection, and interpretation. KC has conducted experiments regarding immunogenic cell death and has helped in drafting the manuscript. SA has been in charge of collecting tissue specimens and gathering clinical data from donors. TS has a substantial contribution in the conception and designing of the work and has been implicated in interpretation of results. IM-Z has been the main coordinator of the study, had a main role in conception and design of the work, and has been involved in drafting the manuscript.

Acknowledgments

The project has been supported by grants from The Norwegian Cancer Society and The Northern Norway Regional Health Authorities (Grant #9223/SFP1138-13).

Supplementary Material

The Supplementary Material for this article can be found online at <http://www.frontiersin.org/Journal/10.3389/fonc.2015.00087/abstract>

- Murray D, McBride WH, Schwartz JL. Radiation biology in the context of changing patterns of radiotherapy. *Radiat Res* (2014) 182:259–72. doi:10.1667/RR13740.1
- Scheithauer H, Belka C, Lauber K, Gaipl US. Immunological aspects of radiotherapy. *Radiat Oncol* (2014) 9:185. doi:10.1186/1748-717X-9-185
- Formenti SC, Demaria S. Combining radiotherapy and cancer immunotherapy: a paradigm shift. *J Natl Cancer Inst* (2013) 105:256–65. doi:10.1093/jnci/djs629
- Multhoff G, Radons J. Radiation, inflammation, and immune responses in cancer. *Front Oncol* (2012) 2:58. doi:10.3389/fonc.2012.00058
- Gaipl US, Multhoff G, Scheithauer H, Lauber K, Hehlhans S, Frey B, et al. Kill and spread the word: stimulation of antitumor immune responses in the context of radiotherapy. *Immunotherapy* (2014) 6:597–610. doi:10.2217/imt.14.38

10. Crittenden M, Kohrt H, Levy R, Jones J, Camphausen K, Dicker A, et al. Current clinical trials testing combinations of immunotherapy and radiation. *Semin Radiat Oncol* (2015) **25**:54–64. doi:10.1016/j.semradonc.2014.07.003
11. Demaria S, Ng B, Devitt ML, Babb JS, Kawashima N, Liebes L, et al. Ionizing radiation inhibition of distant untreated tumors (abscopal effect) is immune mediated. *Int J Radiat Oncol Biol Phys* (2004) **58**:862–70. doi:10.1016/j.ijrobp.2003.09.012
12. Kroemer G, Zitvogel L. Abscopal but desirable: the contribution of immune responses to the efficacy of radiotherapy. *Oncoimmunology* (2012) **1**:407–8. doi:10.4161/onci.20074
13. Finkelstein SE, Timmerman R, McBride WH, Schae D, Hoffe SE, Mantz CA, et al. The confluence of stereotactic ablative radiotherapy and tumor immunology. *Clin Dev Immunol* (2011) **2011**:439752. doi:10.1155/2011/439752
14. Burnette B, Fu YX, Weichselbaum RR. The confluence of radiotherapy and immunotherapy. *Front Oncol* (2012) **2**:143. doi:10.3389/fonc.2012.00143
15. Dewan MZ, Galloway AE, Kawashima N, Dewyngaert JK, Babb JS, Formenti SC, et al. Fractionated but not single-dose radiotherapy induces an immune-mediated abscopal effect when combined with anti-CTLA-4 antibody. *Clin Cancer Res* (2009) **15**:5379–88. doi:10.1158/1078-0432.CCR-09-0265
16. Demaria S, Formenti SC. Radiation as an immunological adjuvant: current evidence on dose and fractionation. *Front Oncol* (2012) **2**:153. doi:10.3389/fonc.2012.00153
17. Lee Y, Auh SL, Wang Y, Burnette B, Wang Y, Meng Y, et al. Therapeutic effects of ablative radiation on local tumor require CD8+ T cells: changing strategies for cancer treatment. *Blood* (2009) **114**:589–95. doi:10.1182/blood-2009-02-206870
18. Gupta A, Probst HC, Vuong V, Landshammer A, Muth S, Yagita H, et al. Radiotherapy promotes tumor-specific effector CD8+ T cells via dendritic cell activation. *J Immunol* (2012) **189**:558–66. doi:10.4049/jimmunol.1200563
19. Schae D, Ratican JA, Iwamoto KS, McBride WH. Maximizing tumor immunity with fractionated radiation. *Int J Radiat Oncol Biol Phys* (2012) **83**:1306–10. doi:10.1016/j.ijrobp.2011.09.049
20. Golden EB, Frances D, Pellicciotta I, Demaria S, Helen Barcellos-Hoff M, Formenti SC. Radiation fosters dose-dependent and chemotherapy-induced immunogenic cell death. *Oncoimmunology* (2014) **3**:e28518. doi:10.4161/onci.28518
21. Orimo A, Weinberg RA. Stromal fibroblasts in cancer: a novel tumor-promoting cell type. *Cell Cycle* (2006) **5**:1597–601. doi:10.4161/cc.5.15.3112
22. Kalluri R, Zeisberg M. Fibroblasts in cancer. *Nat Rev Cancer* (2006) **6**:392–401. doi:10.1038/nrc1877
23. Ito M, Ishii G, Nagai K, Maeda R, Nakano Y, Ochiai A. Prognostic impact of cancer-associated stromal cells in patients with stage I lung adenocarcinoma. *Chest* (2012) **142**:151–8. doi:10.1378/chest.11-2458
24. Liao Y, Ni Y, He R, Liu W, Du J. Clinical implications of fibroblast activation protein- α in non-small cell lung cancer after curative resection: a new predictor for prognosis. *J Cancer Res Clin Oncol* (2013) **139**:1523–8. doi:10.1007/s00432-013-1471-8
25. Mishra P, NBanerjee D, Ben-Baruch A. Chemokines at the crossroads of tumor-fibroblast interactions that promote malignancy. *J Leukoc Biol* (2011) **89**:31–9. doi:10.1189/jlb.0310182
26. Egeblad M, Littlepage LE, Werb Z. The fibroblastic coconspirator in cancer progression. *Cold Spring Harb Symp Quant Biol* (2005) **70**:383–8. doi:10.1101/sqb.2005.70.007
27. Erez N, Truitt M, Olson P, Arron ST, Hanahan D. Cancer-associated fibroblasts are activated in incipient neoplasia to orchestrate tumor-promoting inflammation in an NF- κ B-dependent manner. *Cancer Cell* (2010) **17**:135–47. doi:10.1016/j.ccr.2009.12.041
28. Silzle T, Kreutz M, Dobler MA, Brockhoff G, Knuechel R, Kunz-Schughart LA. Tumor-associated fibroblasts recruit blood monocytes into tumor tissue. *Eur J Immunol* (2003) **33**:1311–20. doi:10.1002/eji.200323057
29. Orimo A, Gupta PB, Sgroi DC, Arenzana-Seisdedos F, Delaunay T, Naeem R, et al. Stromal fibroblasts present in invasive human breast carcinomas promote tumor growth and angiogenesis through elevated SDF-1/CXCL12 secretion. *Cell* (2005) **121**:335–48. doi:10.1016/j.cell.2005.02.034
30. Smith RS, Smith TJ, Blieden TM, Phipps RP. Fibroblasts as sentinel cells. Synthesis of chemokines and regulation of inflammation. *Am J Pathol* (1997) **151**:317–22.
31. Servais C, Erez N. From sentinel cells to inflammatory culprits: cancer-associated fibroblasts in tumour-related inflammation. *J Pathol* (2013) **229**:198–207. doi:10.1002/path.4103
32. Kraman M, Bambrough PJ, Arnold JN, Roberts EW, Magiera L, Jones JO, et al. Suppression of antitumor immunity by stromal cells expressing fibroblast activation protein- α . *Science* (2010) **330**:827–30. doi:10.1126/science.1195300
33. Li T, Yang Y, Hua X, Wang G, Liu W, Jia C, et al. Hepatocellular carcinoma-associated fibroblasts trigger NK cell dysfunction via PGE2 and IDO. *Cancer Lett* (2012) **318**:154–61. doi:10.1016/j.canlet.2011.12.020
34. Ahmadzadeh M, Rosenberg SA. TGF- β 1 attenuates the acquisition and expression of effector function by tumor antigen-specific human memory CD8 T cells. *J Immunol* (2005) **174**:5215–23. doi:10.4049/jimmunol.174.9.5215
35. Feig C, Jones JO, Kraman M, Wells RJ, Deonarine A, Chan DS, et al. Targeting CXCL12 from FAP-expressing carcinoma-associated fibroblasts synergizes with anti-PD-L1 immunotherapy in pancreatic cancer. *Proc Natl Acad Sci U S A* (2013) **110**:20212–7. doi:10.1073/pnas.1320318110
36. Russell JS, Brown JM. The irradiated tumor microenvironment: role of tumor-associated macrophages in vascular recovery. *Front Physiol* (2013) **4**:157. doi:10.3389/fphys.2013.00157
37. Schae D, Kachikwu EL, McBride WH. Cytokines in radiobiological responses: a review. *Radiat Res* (2012) **178**:505–23. doi:10.1667/RR3031.1
38. Chargari C, Clemenson C, Martins I, Perfettini JL, Deutsch E. Understanding the functions of tumor stroma in resistance to ionizing radiation: emerging targets for pharmacological modulation. *Drug Resist Updat* (2013) **16**:10–21. doi:10.1016/j.drug.2013.01.001
39. Barcellos-Hoff MH, Park C, Wright EG. Radiation and the microenvironment – tumorigenesis and therapy. *Nat Rev Cancer* (2005) **5**:867–75. doi:10.1038/nrc1735
40. Hellevik T, Pettersen I, Berg V, Winberg JO, Moe BT, Bartnes K, et al. Cancer-associated fibroblasts from human NSCLC survive ablative doses of radiation but their invasive capacity is reduced. *Radiat Oncol* (2012) **7**:59. doi:10.1186/1748-717X-7-59
41. Hellevik T, Pettersen I, Berg V, Bruun J, Bartnes K, Busund LT, et al. Changes in the secretory profile of NSCLC-associated fibroblasts after ablative radiotherapy: potential impact on angiogenesis and tumor growth. *Transl Oncol* (2013) **6**:66–74. doi:10.1593/tlo.12349
42. Nazareth MR, Broderick L, Simpson-Abelson MR, Kelleher RJ Jr, Yokota SJ, Bankert RB, et al. Characterization of human lung tumor-associated fibroblasts and their ability to modulate the activation of tumor-associated T cells. *J Immunol* (2007) **178**:5552–62. doi:10.4049/jimmunol.178.9.5552
43. Golden EB, Pellicciotta I, Demaria S, Barcellos-Hoff MH, Formenti SC. The convergence of radiation and immunogenic cell death signaling pathways. *Front Oncol* (2012) **2**:88. doi:10.3389/fonc.2012.00088
44. Tesniere A, Apetoh L, Ghiringhelli F, Joza N, Panaretakis T, Kepp O, et al. Immunogenic cancer cell death: a key-lock paradigm. *Curr Opin Immunol* (2008) **20**:504–11. doi:10.1016/j.coi.2008.05.007
45. Reits EA, Hodge JW, Herberts CA, Groothuis TA, Chakraborty M, Wansley EK, et al. Radiation modulates the peptide repertoire, enhances MHC class I expression, and induces successful antitumor immunotherapy. *J Exp Med* (2006) **203**:1259–71. doi:10.1084/jem.20052494
46. Sheard MA, Uldrijan S, Vojtesek B. Role of p53 in regulating constitutive and X-radiation-inducible CD95 expression and function in carcinoma cells. *Cancer Res* (2003) **63**:7176–84.
47. Tsai CS, Chen FH, Wang CC, Huang HL, Jung SM, Wu CJ, et al. Macrophages from irradiated tumors express higher levels of iNOS, arginase-I and COX-2, and promote tumor growth. *Int J Radiat Oncol Biol Phys* (2007) **68**:499–507. doi:10.1016/j.ijrobp.2007.01.041
48. Schae D, Marples B, Trott KR. The effects of low-dose X-irradiation on the oxidative burst in stimulated macrophages. *Int J Radiat Biol* (2002) **78**:567–76. doi:10.1080/09553000210126457
49. Liao D, Luo Y, Markowitz D, Xiang R, Reisfeld RA. Cancer associated fibroblasts promote tumor growth and metastasis by modulating the tumor immune microenvironment in a 4T1 murine breast cancer model. *PLoS One* (2009) **4**:e7965. doi:10.1371/journal.pone.0007965
50. Özdemir BC, Pentcheva-Hoang T, Carstens JL, Zheng X, Wu CC, Simpson TR, et al. Depletion of carcinoma-associated fibroblasts and fibrosis induces immunosuppression and accelerates pancreatic cancer with reduced survival. *Cancer Cell* (2014) **25**:719–34. doi:10.1016/j.ccr.2014.04.005

51. Yang L, Pang Y, Moses HL. TGF-beta and immune cells: an important regulatory axis in the tumor microenvironment and progression. *Trends Immunol* (2010) **31**:220–7. doi:10.1016/j.it.2010.04.002
52. Tan W, Zhang W, Strasner A, Grivennikov S, Cheng JQ, Hoffman RM, et al. Tumour-infiltrating regulatory T cells stimulate mammary cancer metastasis through RANKL-RANK signalling. *Nature* (2011) **470**:548–53. doi:10.1038/nature09707
53. Matzinger P. Tolerance, danger, and the extended family. *Annu Rev Immunol* (1994) **12**:991–1045. doi:10.1146/annurev.immunol.12.1.991
54. Kroemer G, Galluzzi L, Kepp O, Zitvogel L. Immunogenic cell death in cancer therapy. *Annu Rev Immunol* (2013) **31**:51–72. doi:10.1146/annurev-immunol-032712-100008

Conflict of Interest Statement: The authors declare that the research has been conducted in the absence of any commercial or financial relationships that could be construed as a potential conflict of interest.

Copyright © 2015 Gorchs, Hellevik, Bruun, Camilio, Al-Saad, Stuge and Martinez-Zubiaurre. This is an open-access article distributed under the terms of the Creative Commons Attribution License (CC BY). The use, distribution or reproduction in other forums is permitted, provided the original author(s) or licensor are credited and that the original publication in this journal is cited, in accordance with accepted academic practice. No use, distribution or reproduction is permitted which does not comply with these terms.