



ORIGINAL ARTICLE

## Variability in *Calanus* spp. abundance on fine- to mesoscales in an Arctic fjord: implications for little auk feeding

DANIEL VOGEDES<sup>1,2\*</sup>, KETIL EIANE<sup>3</sup>, ANNA S. BÅTNES<sup>4</sup> & JØRGEN BERGE<sup>1,2</sup>

<sup>1</sup>The University Centre in Svalbard, Longyearbyen, Norway, <sup>2</sup>Department of Arctic and Marine Biology, University of Tromsø, Norway, <sup>3</sup>Faculty for Bioscience and Aquaculture, University of Nordland, Bodø, Norway, and <sup>4</sup>Department of Biology, Norwegian University of Science and Technology, Trondheim Biological Station, Trondheim, Norway

### Abstract

We studied the abundance of calanoid copepods of the genus *Calanus* in a high-resolution sampling grid located in the vicinity of a breeding colony of an avian *Calanus* predator, the little auk (*Alle alle*) in an Arctic fjord (Isfjorden, Svalbard) in July 2007. Within diving reach of little auks, all copepodite stages of *C. finmarchicus*, as well as stages CIII–CV of *C. glacialis*, were recorded in all 26 stations sampled. Spatial autocorrelation analysis was used to detect spatial heterogeneity (patches) in the distribution of *Calanus* spp. Positive spatial autocorrelation was detected on scales up to 1.2 km for *C. finmarchicus* stages CIII–CV and for *C. glacialis* CIV and CV, but was rarely detected for the younger stages. This suggests that the tendency to form patches varies with ontogeny in *Calanus* spp. At an adjacent little auk colony, the diet prey composition from 30 gular pouches of little auks returning from feeding trips was investigated. *Calanus glacialis* CIV and CV were numerically dominant in the prey samples, while *C. finmarchicus* CIV which was dominant in the net samples did not contribute to the little auk diet. This could suggest selective feeding, a detection of patches beyond the scale of our survey, feeding beyond the sampling area or a combination of these factors. Large *Calanus* abundance differences within the sampling grid underline the necessity of a proper choice of grid size, in this case 2 km between stations.

**Key words:** Zooplankton patchiness, spatial autocorrelation, *Alle alle*, predator–prey relationship, seabirds, ontogenetic variability

### Introduction

Spatial heterogeneity of marine zooplankton can be substantial (Hardy 1936; Mann & Lazier 2006). Characteristic horizontal length scales of plankton patches range from less than 1 m to more than 10<sup>4</sup> m (Legendre et al. 1986; Tsuda et al. 1993; Currie et al. 1998; Mann & Lazier 2006, see Table I for details). Such variability can complicate interpretations of ecological data sets obtained from a limited number of sampling stations as such data may not adequately capture relevant meso- and fine-scale spatial variability (Hembre & Megard 2003). Yet ecological studies often extrapolate data based on only a few sampling locations that at best reflect variability on one or a restricted number of spatial scales. Such investigations may produce over-smoothed data sets that render the detection of ecologically significant

variability unlikely and may potentially lead to biased interpretations (Young et al. 2009). It is therefore of importance to design the sampling scheme in a way that captures the variability relevant to the processes of interest (Tsuda et al. 1993; Hembre & Megard 2003; Molinero et al. 2008; Young et al. 2009).

Patchiness of planktonic organisms is caused by a variety of biotic (e.g. primary productivity patterns, migratory behaviour) and abiotic (e.g. oceanic gyres, coastal eddies, tidal fronts, Langmuir cells, micro-scale turbulence) factors on different scales (Pinel-Alloul 1995).

For small planktonic organisms (e.g. copepods), some processes underlying population dynamics (e.g. mate localization, migration) operate on spatial scales of <10<sup>-2</sup> m (e.g. Pinel-Alloul 1995; Pitchford & Brindley 2001; Saito & Kiørboe 2001; Kiørboe et al. 2005; Weimerskirch 2007). Other ecologically

\*Correspondence: Daniel Vogedes, Department of Arctic and Marine Biology, University of Tromsø, 9037 Tromsø, Norway. E-mail: [Daniel.Vogedes@uit.no](mailto:Daniel.Vogedes@uit.no)

Published in collaboration with the Institute of Marine Research, Norway

(Accepted 10 June 2013; Published online 2 January 2014; Printed 15 January 2014)

© 2013 The Author(s).

Published by Taylor & Francis. This is an Open Access article distributed under the terms of the Creative Commons Attribution License (<http://creativecommons.org/licenses/by/3.0>), which permits unrestricted use, distribution, and reproduction in any medium, provided the original work is properly cited. The moral rights of the named author(s) have been asserted.

significant processes such as predator–prey interactions can operate on a wide range of scales, from the millimetre scale covered by foraging fish larvae to the >100 km covered by right whales feeding on copepods (Beardsley et al. 1996; Pendleton et al. 2009; Young et al. 2009). To meet their energetic demands, many predatory species depend on the occurrence of prey patches of appropriate size to obtain sufficiently high feeding rates (e.g. Beardsley et al. 1996); thus, knowledge about spatial heterogeneity is crucial for these kinds of studies. While it is a well-known phenomenon that plankton occurs in patches on different scales, to our knowledge there have been no studies looking into patch size and the ecological consequences of patchiness in an Arctic fjord system.

The little auk (*Alle alle* Linnaeus, 1758) is an avian planktivore that depends on a lipid rich diet of zooplankton associated with Arctic water masses (Karnovsky et al. 2003; Steen et al. 2007; Brown et al. 2012). Species composition detected by in situ sampling of available prey in the feeding areas of the little auk, however, tends to vary considerably from compositions found in the little auk diet. In the diet, often the frequency of occurrence of the relatively larger Arctic calanoid copepods of the genus *Calanus* tends to be appreciably higher than in plankton samples (Golovkin et al. 1972; Bradstreet 1982; Steen et al. 2007). Little auk diet in Arctic Canada contained 79% adult females of *Calanus hyperboreus* Krøyer, 1838, while net tows collected on the feeding grounds contained only 20% (Bradstreet 1982). Birds sampled in Svalbard waters in a study by Steen et al. (2007) had consistently collected adult females of *Calanus glacialis* Jaschnov, 1955 in their gular pouches, a prey that was not detected at all in plankton net hauls in the assumed feeding grounds. The first mention of discrepancies between *A. alle* diet and available prey is probably in the article by Golovkin et al. (1972), who hypothesized that this discrepancy is caused by the birds' ability to locate and exploit spatial heterogeneity in *Calanus* concentrations that remain undetected by traditional zooplankton sampling strategies. Although the effects of large-scale oceanographic features such as fronts and current systems have been addressed (e.g. Karnovsky et al. 2003, 2011), until now, no study has dealt with the effects of fine- to mesoscale patchiness of *Calanus* on little auk feeding behaviour. Instead, zooplankton abundances from often coarse grid sampling programmes have been assumed to be representative for a large area (e.g. Steen et al. 2007).

Here we study the spatial variability in the density of *Calanus* spp. on a fine- to mesoscale in the vicinity of a breeding colony of *A. alle*. This enables us to give an estimate of the potential prey patch size for little auk foraging and a recommendation for the minimum

Table I. Definitions of scales for zooplankton sampling in the literature.

Scale name	Range (km)	Reference
Microscale	<0.001	Young et al. (2009)
Microscale	<0.15	Molinero et al. (2008)
Fine scale	<1	This study; Weimerskirch (2007)
Small scale	0.1–>1	Haury (1976)
Small scale	<1.5	Tokarev et al. (1998)
Mesoscale	1–20	This study
Meso- to megascale	0.5–50	Tsuda (1993)
Mesoscale	0–100	Vilar et al. (2003)
Mesoscale	100–1000	Weimerskirch (2007)
Coarse scale	1–100	Weimerskirch (2007)

sampling grid size in order to assess the variability in the horizontal distribution pattern. Furthermore, we utilize our results to evaluate how the variation in zooplankton abundance throughout the sampling grid affects foraging effort for little auk parents.

## Material and methods

### Field collections of potential zooplankton prey

Sampling was conducted in Isfjorden, Svalbard (centre of sampling grid: 78.26°N, 15.05°E; Figure 1), in an area adjacent to a little auk colony, where little auks were observed both on the water and diving. Similar to Karnovsky et al. (2003), we assume that birds are actively feeding in areas where they are found on the water. The relevant scale for detecting spatial heterogeneity in *Calanus* spp. was not known a priori. Thus, to ensure representative sampling at different spatial scales we designed an array of nested triangles (matrushka-like), each consisting of three sampling positions. In total, the design consisted of 24 sites (stations KE1–KE24, Figure 1) with a distance of 19.2 km (approximately the width of the fjord, broken-dashed outer lines in Figure 1) between each of the three outer stations (KE1–KE3). The next stations (KE4–KE6, connected by broken lines in Figure 1) were placed at the midpoints between the stations of the first triangle (9.6 km apart). Further stations were located in the same way so as to define a series of successively smaller nested triangles (lengths 9600, 4800, 2400, 1200, 600, 300 and 150 m, respectively). In addition, three replicate samples (CS1–CS3) were taken as close as possible to the centre of the sampling grid. Bottom depth at the 27 stations used ranged from *c.* 60 m at the stations closest to shore to 310 m at KE6. Sampling was conducted from three small boats operated simultaneously between 11:45 and 14:15, local time, on 18 July 2007. In reality, boat drift on stations reduced geographic precision, but based on GPS track logs

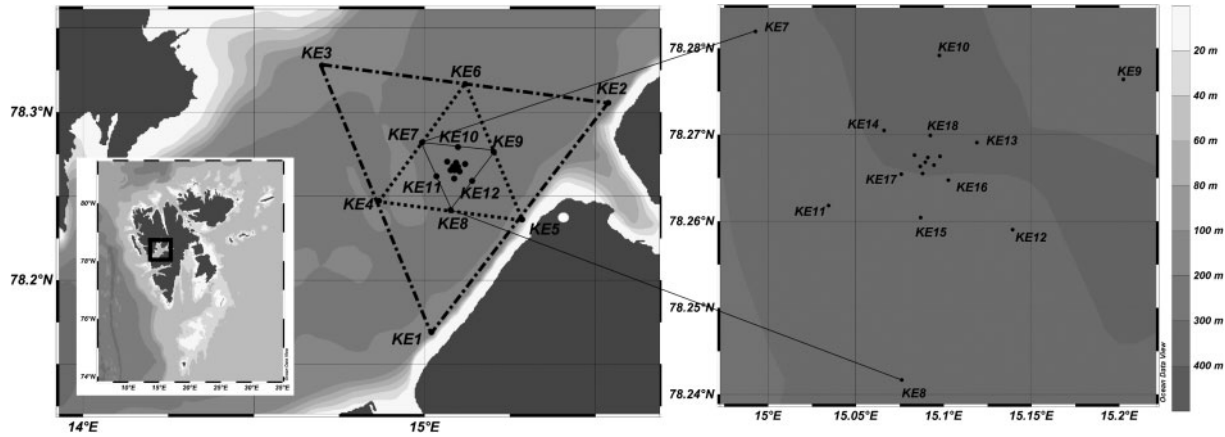


Figure 1. Sampling area with inserted overview map of Svalbard (left bottom corner). Broken and dotted lines indicate the first two nested triangles. The third triangle (KE7–9) represents the area enlarged on the right panel, within which five more matrushka-like triangles are located (but not outlined on the map). White dot indicates approximate location of little auk colony.

nearly all samples were taken within a radius of 25 m from the original position of each station, and as sampling was limited to 25 m depth, it was finished in about 2 min and little drift occurred during the net tows. Hence, this potential source of error in station location was ignored in our analysis.

Zooplankton was sampled by vertical hauls ( $c. 0.5 \text{ m s}^{-1}$ ) with hand-pulled specially manufactured WP2 plankton nets (mesh size = 200  $\mu\text{m}$ , sampling area = 0.25  $\text{m}^2$ ). We restricted our sampling to the upper 25 m of the water column as *A. alle* rarely dive deeper than 20 m (Falk et al. 2000; Welcker et al. 2009a; Karnovsky et al. 2011). Samples were split in two fractions using a simple box splitter (Motoda 1959). One fraction from each station was dried (80°C for 24 h) and weighed to estimate total biomass (dry mass, DM). The other fraction was fixed in a 4% borax-buffered formaldehyde-in-seawater solution and stored before enumeration of *Calanus* spp. from a randomly selected quarter of the total content (IO PAN, Sopot, Poland).

*Calanus* spp. copepodites were staged and identified to species (*Calanus finmarchicus* (Gunnerus, 1770), *C. glacialis* and *C. hyperboreus*) from the distribution of prosome length within a copepodite stage using the tables of Weydmann & Kwasniewski (2008). Abundances were estimated assuming a 100% filtering efficiency of the plankton nets. One zooplankton sample was lost (#22).

We monitored depth-resolved temperature and salinity by three temperature and salinity profilers (SAIV CTD profilers, one SD202 unit and two SD204 units, SAIV A/S, Bergen, Norway) attached to the cod end of each of the plankton nets. The CTD profiles were also used to verify the actual depth of the zooplankton net. The CTDs were inter-calibrated based on a simultaneous deployment where all three instruments were mounted together.

Temperature measurements were identical to the first decimal point and therefore required no correction. The largest difference in salinity measurements was 0.5 PSU and we corrected salinity by a factor based on the offset between each CTD and the mean salinity obtained from all three instruments.

#### Field collection of *Alle alle* diet samples

Little auk chick diet samples were collected from 30 breeding *Alle alle* during the late chick-rearing period between 17 and 27 July 2007. Birds were captured with mist nets from the bird cliff in Isfjorden (Figure 1) and the contents of the gular pouches (a small sack below the beak, used to store and transport prey back to the colony for chick provisioning) were immediately gently scooped out with a small spoon into plastic bottles. Samples were preserved in a 4% formaldehyde-in-seawater solution for later analysis. In the laboratory, diet samples were rinsed with distilled water through a 200  $\mu\text{m}$  sieve. Random subsamples were taken and prey items were identified to the lowest possible taxonomic level and counted. Subsampling was repeated until a minimum of 100 individuals were counted. *Calanus* spp. identification was carried out by the same methodology as used for sea samples. Of the *Calanus* prey, 23.1% could not be ascertained to species or developmental stage and were not used in the numerical analysis. For the analysis we chose to focus mainly on *Calanus glacialis* and *C. finmarchicus*, due to the fact that the larger *C. hyperboreus* were only represented in the nets in very small numbers (see Table II). Furthermore, it has previously been documented that *C. glacialis* is the most important prey species for the little auks (Karnovsky et al. 2003; Steen et al. 2007).

Table II. Abundance of *Calanus* spp. copepodites and adult females (AF) (ind. m<sup>-3</sup>) and total net caught biomass (mg m<sup>-3</sup> dry mass, DM) at the stations. CS1–CS3 indicate central stations. n/a, lost sample.

Station	<i>Calanus finmarchicus</i>						<i>C. glacialis</i>						<i>C. hyperboreus</i>		
	CI	CII	CIII	CIV	CV	AF	CI	CII	CIII	CIV	CV	AF	CIII	CIV	DM
KE1	26	69	170	98	56	3	7	16	56	105	49	–	–	1	20
KE2	54	71	114	141	76	5	–	16	38	152	92	–	–	5	20
KE3	54	92	218	212	43	–	–	43	43	218	60	–	–	–	26
KE4	27	87	174	321	103	–	–	6	0	103	114	–	–	6	33
KE5	16	61	98	94	110	–	–	4	49	139	102	–	–	4	29
KE6	56	85	118	134	46	–	–	7	3	62	26	–	–	–	16
KE7	35	55	118	181	40	–	–	–	5	65	15	–	3	–	23
KE8	52	183	340	372	124	–	–	13	26	314	202	–	–	–	36
KE9	41	213	435	369	156	–	–	–	25	287	148	–	–	–	57
KE10	32	112	880	1024	256	–	–	–	64	576	400	–	–	–	115
KE11	68	136	361	327	116	–	7	27	55	313	143	–	–	–	34
KE12	39	170	425	496	98	–	–	33	72	255	137	–	–	7	39
KE13	47	73	303	424	126	5	–	21	26	235	120	–	–	5	41
KE14	52	118	379	483	144	7	–	13	65	366	255	–	–	–	59
KE15	16	196	539	506	212	–	–	–	33	425	196	–	–	8	65
KE16	13	72	314	581	229	3	–	–	26	346	281	–	–	–	88
KE17	16	141	471	408	188	3	–	16	78	298	243	–	–	–	41
KE18	39	72	346	503	222	–	–	–	52	340	287	–	–	–	85
KE19	63	94	351	402	75	–	–	6	63	226	232	3	–	–	47
KE20	36	45	193	381	157	9	–	–	4	152	99	–	–	–	47
KE21	52	85	261	359	209	–	–	13	46	242	170	–	–	–	46
KE22	n/a	n/a	n/a	n/a	n/a	n/a	n/a	n/a	n/a	n/a	n/a	n/a	n/a	n/a	n/a
KE23	31	94	314	389	188	–	–	6	63	446	245	–	–	–	94
KE24	46	124	392	327	157	–	–	7	46	359	157	–	–	7	59
CS1	10	98	381	522	381	–	–	10	131	653	653	–	–	–	134
CS2	49	65	408	506	171	–	–	8	58	474	417	–	–	–	95
CS3	8	41	319	588	319	–	–	–	33	474	515	–	–	–	98
Mean	38	102	324	390	154	1	1	10	45	293	206	0	0	2	56
Variance	29	2117	26,212	37,230	7546	6	3	120	795	24,787	26,040	0	–	5	1090
95% CI	8	20	73	86	37	1	1	5	12	68	67	0	0	1	14

#### Data analysis: contour plots of physical properties and species abundance

To visualize variability in the physical properties of the study area and the species and stage structure of *Calanus* spp. we computed and plotted contour charts and maps using the Ocean Data View software package v. 4.4.4 – 2012 (Schlitzer 2011) with contour interpolations done by the DIVA plug-in V 4.3.0 (Troupin et al. 2009). Due to the increasing sampling resolution towards the centre of the grid, single stations with extreme values towards the centre tend to be smoothed out by surrounding stations; thus, the smoothed figures near the centre stations should be interpreted with care. Temperature and salinity were plotted as mean values for the entire sampling depth (25 m).

#### Analysis of spatial heterogeneity

Similarity between stations and grouping of stations was tested with hierarchical cluster analysis and SIMilarity PERcentage (SIMPER) computation and

the presence of group structure with the SIMPROF (SIMilarity PROFILE; Clarke et al. 2008) test of the PRIMER software package v. 6.1.6 (PRIMER-E Ltd, Plymouth, UK, 2006). All PRIMER tests were run on square root-transformed abundance data to even out the influence of extreme abundance values.

To quantify spatial heterogeneity of prey, we tested for spatial autocorrelation by estimating the spatial autocorrelation coefficient Moran's I (Moran 1950) on *Calanus* spp. copepodite stages that appeared in >50% of the sampled stations. The Moran's I statistics for a group of stations of characteristic separation distance ( $d$ ) is computed according to Legendre & Legendre (1998) from

$$I(d) = [W^{-1} \sum_{h=1}^n \sum_{i=1}^n w_{hi} (y_h - \bar{y})(y_i - \bar{y})] \\ [n^{-1} \sum_{i=1}^n (y_i - \bar{y})^2]^{-1} \text{ for } h \neq i.$$

Here,  $y_h$  and  $y_i$  define observed densities at stations  $i$  and  $h$ , respectively.  $W$  is the sum of all weights  $w_{hi}$  set to 1 for combinations of  $i$  and  $h$  that belong to



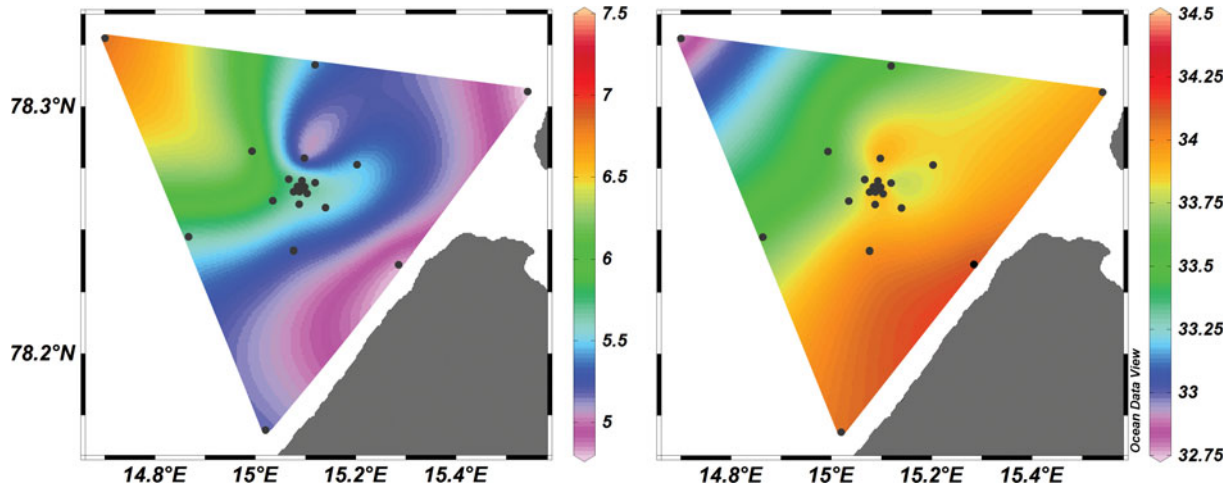


Figure 2. Temperature ( $^{\circ}\text{C}$ , left) and salinity (PSU, right) averaged over the zooplankton sampling depth of 25 m.

geographical distance class  $d$  and 0 otherwise, so that separate statistics are computed for stations grouped according to separation distance.

Values of Moran's  $I$  typically range from approx. 1 (positive autocorrelation) to  $-1$  (negative autocorrelation) with an expected value of  $-1(n-1)^{-1}$ , where  $n$  is the number of localities in the data set. In this analysis, pairs of similar distances are grouped into distance classes. The data set consisted of 26 localities, which we divided into eight distance classes with similar numbers (78 or 80) of station pairs (see Table IV for distance classes). For statistical testing we used the SAM software package v. 4 (Rangel et al. 2010, <http://www.ecoevol.ufg.br/sam>).

For the situation where significant positive autocorrelations were detected for smaller separation distance classes but not for larger separation distance classes, we take the spatial distance where the spatial autocorrelation function equals zero to be an estimate of the characteristic length scale of a patch.

#### Prey size selection: Ivlev's electivity index

Unfortunately, we lack data on handling time and energetic costs for selective feeding, but in order to explore whether size differences in prey could account for the observed prey selection we calculated Ivlev's electivity index  $E = (r-p)(r+p)^{-1}$  (Ivlev 1961), where  $r$  and  $p$  are proportional contributions of each prey type in the diet and environment, respectively, relative to *Calanus* prey size (average prosome length (PL) by developmental stage).

## Results

### Hydrography

The main hydrographical trend recorded in the study area was a gradient from colder ( $5\text{--}6^{\circ}\text{C}$ ),

more saline ( $34\text{--}34.3\text{‰}$ ) water in the southeastern part of the sampling grid towards warmer ( $6.5\text{--}7^{\circ}\text{C}$ ), less saline ( $32.8\text{--}33.5\text{‰}$ ) water in the northwestern part (Figure 2). In addition, a body of colder, more saline water was detected near the central area of the sampling grid. The thermocline and halocline were located between 7 and 13 m at all stations. Variability in physical properties was most pronounced closer to the surface, and generally decreased towards 25 m depth. Due to the overall horizontal pattern being similar at different depths, in Figure 2 we present only the average over the entire water column, not separate depth layers.

### Calanus abundance and total biomass (dry mass)

Mean abundance increased from stage CI to CIV for *Calanus finmarchicus* from 38 to 390 ind.  $\text{m}^{-3}$  and for *Calanus glacialis* from 0.3 to 293 ind.  $\text{m}^{-3}$ , while the counts for *C. glacialis* were generally lower than for *C. finmarchicus* (Table II). Variance was highest for *C. finmarchicus* CIV, followed by CIII and *C. glacialis* CV and CIV.

Abundance of *C. finmarchicus* CIV peaked in concentration at station KE10 (1024 ind.  $\text{m}^{-3}$ , Figure 3, Table II) and CV at one of the central stations (CS3, 319 ind.  $\text{m}^{-3}$ ). Across the sampling area, *C. glacialis* CIV and CV were most numerous at a central station (CS1, 653 ind.  $\text{m}^{-3}$  for both stages), with the abundance at the other two central stations being somewhat lower (CS2 and CS3, 416 and 514 ind.  $\text{m}^{-3}$ , respectively). The abundance throughout the rest of the sampling grid was also similar for both stages, with another peak at KE10.

Of the potential little auk *Calanus* spp. prey, adult stages were rarely encountered in the samples ( $<1\%$  for all species). *Calanus glacialis* CV contributed between 5% and 27% of all net-caught *Calanus*: *C.*

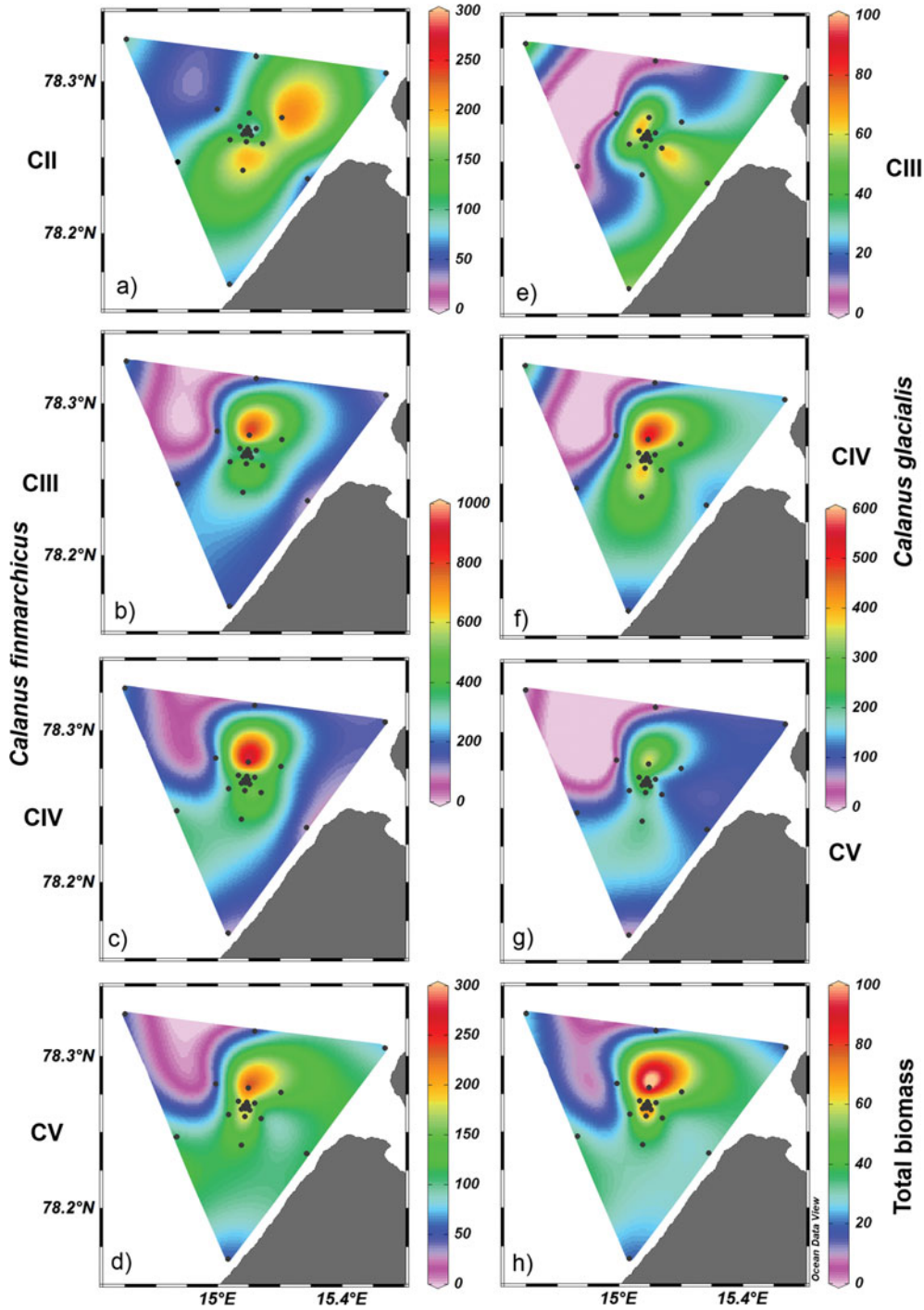


Figure 3. *Calanus finmarchicus* CII–CV (a–d), *Calanus glacialis* CIII–CV (e–g) ind.  $\text{m}^{-3}$ , and total dry mass  $\text{m}^{-3}$  of all samples from 25–0 m (h). Note the different scales.

*glacialis* CIV 16–41%, *C. finmarchicus* CV 8–25%, *C. finmarchicus* CIV 21–60% and *Calanus hyperboreus* <1% for CIV (CV were absent).

The average total plankton biomass was  $56 \pm 12$   $\text{mg m}^{-3}$  (mean  $\pm$  95% CI), and it ranged from 115  $\text{mg m}^{-3}$  at KE 10 just north of the centre stations to 16  $\text{mg m}^{-3}$  at KE 6, to the far north of the centre stations. In general, total biomass was low at all the

outermost stations (KE 1–7; 16–33  $\text{mg m}^{-3}$ ; Figure 3, Table II).

#### Gular pouch contents

All 30 gular pouches investigated contained *Calanus* spp. and gular pouch composition did not change in the course of the diet sampling campaign. *Calanus*

Table III. Diet of *Alle alle* chicks in the study area based on 30 individual gular pouches. Stage is copepodite stage, Counts are total counts in all gular pouches, GP is number of gular pouches containing specimens, % is relative stage and species composition of *Calanus* (not applicable for other prey), PL is mean prosome length of copepods, n/a is not applicable, and indet. indicates *Calanus* spp. which were too damaged to unequivocally be identified.

Species	Stage	Counts	GP	%	PL (mm)
<i>C. finmarchicus</i>	CIII	0	0	0	n/a
	CIV	8	3	0.1	2.02
	CV	393	17	4	2.85
<i>C. glacialis</i>	AF	3	2	0	3
	CIII	87	10	0.9	1.92
	CIV	3049	27	31.2	2.62
	CV	5730	24	58.6	3.12
<i>C. hyperboreus</i>	AF	15	4	0.2	4
	CIII	18	8	0.2	2.47
	CIV	260	15	2.7	3.2
	CV	137	5	1.4	4.71
<i>Calanus</i> spp. (indet.)	AF	81	5	0.8	5.7
	n/a	536	24	n/a	n/a
<i>Thysanoessa longicaudata</i>	n/a	18	8	n/a	n/a
<i>Thysanoessa inermis</i>	n/a	31	8	n/a	n/a
<i>Thysanoessa</i> indet.	n/a	29	5	n/a	n/a
<i>Themisto abyssorum</i>	n/a	354	15	n/a	n/a
<i>Themisto libellula</i>	n/a	21	2	n/a	n/a
<i>Themisto</i> indet.	n/a	43	5	n/a	n/a

*glacialis* CV was the dominant copepod prey item (58.6% of all *Calanus* prey) in the gular pouch samples. *Calanus glacialis* developmental stage CIV accounted for 31.1%, while none of the other *Calanus* prey contributed more than 4% to the copepod part of the diet (Table III). In five cases, the number of the pelagic hyperiid amphipod *Themisto abyssorum* Boeck, 1870 exceeded that of

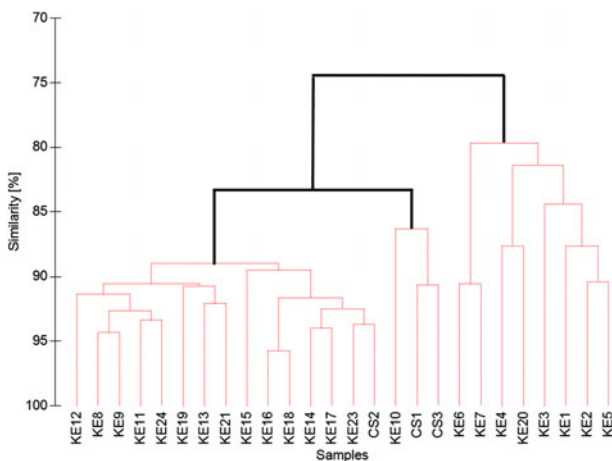


Figure 4. Group average dendrogram, based on all *Calanus* copepods at all stations. All data were square-root transformed. Bold lines: significant group structure. Thin lines: no significant group structure could be detected by SIMPER test ( $p < 0.05$ ).

*Calanus* spp. Five *Alle alle* specimens had more than 85% *Calanus hyperboreus*, and another three specimens had 40–69% *C. hyperboreus* in their gular pouches. Birds with high *C. hyperboreus* percentage also brought back a slightly larger (although not significant on 95% level) number of krill and *Themisto* spp. amphipods (data not presented here).

#### Spatial structure of *Calanus* prey community

Overall similarity in community structure among the sampled stations was high (>80%) according to the SIMPER analysis used for the hierarchical cluster analysis (Figure 4). Nevertheless, there was a significant group structure in the study area, based on the rejection of the null hypothesis (all samples have medium similarity) of the SIMPROF test of all samples including all *Calanus* species and stages ( $P_i = 3.3$ ,  $p < 0.05$ , data not presented).

The sampled stations clustered in three main groups in the hierarchical cluster analysis calculated for sample similarities taking into account all *Calanus* species and copepodite stages (Figure 4). Group A consisted of the two outermost triangles and an additional, more central station (KE1–7 and 20, average similarity 82%). Group B consisted of two centre stations (CS1,3) and KE10 (average similarity 88%), and Group C contained all other stations (average similarity 90%). In all groups, *Calanus finmarchicus* CIV contributed most to within group similarity (18%, 20% and 19%, respectively). Dissimilarity between groups was highest between A and B (35%) with *Calanus glacialis* CV as the main contributor (20%) to the similarity difference, intermediate between groups A and C (24%) with *C. finmarchicus* CIII and CIV contributing equally (16%), and lowest between groups B and C (17%) with *C. glacialis* CV contributing most (20%).

Within the study area there was heterogeneity in the distribution of all *Calanus* species and stages (Table IV). Positive autocorrelations prevailed between classes of separation distances ranging from 0.2 to 1.2 km on average. For larger classes of separation distances (2.1–15.3 km), negative spatial autocorrelations prevailed, most of which occurred at an average separation distance of 5.8 km. Total net-caught biomass autocorrelated positively on the first three separation distances and negatively on the following three separation distances. As the three smallest separation distances mainly contain positive autocorrelations, while from class four onwards significantly negative autocorrelations prevail, we define the spatial horizontal extent of a patch in the study area to be up to 1.2 km.

Table IV. Significant spatial autocorrelations (Moran's I) for *Calanus* copepodite stage (CI–CV) abundances, and total net caught biomass (dry mass, DM) in Isfjorden. Spatial scale is the mean distance between stations in each grouping. Only developmental stages occurring at > 50% of stations were analysed. Key to significance levels: \* $p < 0.05$ , \*\* $p < 0.01$ .

Spatial scale (km)		Spatial scale (km)							
		0.2	0.6	1.2	2.1	4	5.8	8.7	15.3
Number of classes		78	80	78	80	78	80	78	80
<i>C. finmarchicus</i>	CI		0.05*						
	CII	0.2*	-0.15**	-0.18*					
	CIII			0.18**	0.11**	-0.25**	-0.26*	-0.14*	
	CIV		0.14**	0.28**		-0.22**	-0.36**	-0.19**	
	CV	0.27**	0.25**		-0.15**		-0.44**		
<i>C. glacialis</i>	CII	0.17*		-0.36**	0.04**	0.08**			
	CIII			0.09**	-0.27**	0.1**			
	CIV		0.18**	0.22**	-0.15**		-0.57**		
	CV	0.28**	0.06*		-0.23**		-0.42**		
Biomass	DM	0.25**	0.27**	0.15**	-0.13*	-0.15*	-0.53**		

## Discussion

### *Causes of variability in the distribution of Calanus spp.*

Our main conclusion from the present study is that the older stages of *Calanus* spp. form patches at scales from 0.2 to 1.2 km. We did not find a comparable pattern for the younger stages, indicating a potential ontogenetic variability in the tendency to form patches. However, sample sizes of younger stages might have been too small to detect patches at relevant scales (see discussion below). Because this observed pattern is species-independent, an explanation could be that size is the determining factor. As general distribution patterns of plankton are largely driven by advection (Mann & Lazier 2006), it is likely that the observed variability reflects an amplification of the advection signal caused by variation in vertical distribution between early and later developmental stages. Early copepodite stages often maintain a vertical position closer to the surface than do the later stages (Eiane & Ohman 2004; Daase et al. 2008). Copepodites of the older stages are larger and better swimmers (Greene & Landry 1985; Eiane & Ohman 2004), as the number of appendages used for swimming increases with the progression of developmental stage. Also, as the larger body size of later developmental stages is associated with increased susceptibility to visually orienting planktivores (Brooks & Dodson 1965; Aksnes & Utne 1997), larger forms may be forced to trade off food intake and mortality risk by choosing a different vertical position than the smaller forms. Patch sizes for the older stages in the Isfjorden system were within the scale-range detected by other studies for other species (e.g. Tsuda et al. 1993; Young et al. 2009).

The presence of cyclonic, eddy-like structures located in the central part of the Isfjorden system

(Ledang 2009) could account for local upwelling events that transport deeper dwelling specimens to surface waters and create a patch of larger specimens close to surface, which we observed. Additional data obtained from an autonomous underwater vehicle (equipped with CTD, ADCP and fluorescence sensor) operated in the same area during the sampling campaign (Mark Moline, pers. comm.) gave a strong signal of colder water being transported upwards in the vicinity of stations KE7–10–9. This upwelling of colder water coincided with a shallower chlorophyll maximum and an elevation of the zooplankton sound scattering layer in that area (unpublished data). Also, Nilsen et al. (2008) describe rotational dynamics as an important factor for hydrographic forcing in the Isfjorden system, with water masses flowing in along the southern and out along the northern side.

However, attempts to relate *Calanus* abundance to water temperature or salinity (averaged values for 25 m as used in Figure 2) revealed no clear patterns in the current data set: only in one case (*Calanus finmarchicus* CV) did we observe a positive association (Pearson correlation between ln-transformed abundance and salinity,  $R = 0.50$ ,  $p < 0.01$ , d.f. = 24); thus, physical factors do not seem to be the major driving force for the observed clusters. Studies of zooplankton patchiness in Conception Bay, Newfoundland (Young et al. 2009), and in the western North Pacific (Tsuda et al. 1993) also failed to detect clear relationships between fine-scale patterns in zooplankton abundance and water temperature.

The late copepodite stages of *C. finmarchicus* and *C. glacialis* contributed significantly to the distribution of total biomass in the study area. We found that biomass (DM) was positively correlated with abundance of copepodite stages CIII–CV of *C. finmarchicus* and *C. glacialis*, but not with earlier



stages, adult females, or with *C. hyperboreus* abundance. While the abundance of *Calanus* spp. and copepodite stages showed considerable variability among stations (Table II), the overall pattern suggests increasing abundances towards the central part of the fjord (Figure 3). This is also reflected in the three main clusters from the similarity analysis (Figure 4): total abundance of *Calanus* in these clusters (peripheral stations, more central stations, stations in the very centre of the grid) differed remarkably (mean  $\pm$  95% CI):  $769.0 \pm 166.6$ ,  $1737.9 \pm 131.8$  and  $2826.6 \pm 679.0$  ind.  $m^{-3}$ , respectively.

Young et al. (2009) detected zooplankton patchiness (not resolved to copepodite stages) on scales from 10 km down to less than 1 m, and Tsuda et al. (1993) found that more than 75% of the patches on a 2500-km transect were smaller than 500 m in length, while the maximum patch length was 6.6 km when studying the distribution patterns of *Neocalanus cristatus* (Krøyer, 1848) copepodite stage CV. In what Tsuda et al. (1993) refer to as microscale survey in the same study, a patch length of 10–20 m was most frequently observed for the same copepodite stage.

#### Discrepancies between *Alle alle* diet and net sampling

*Calanus finmarchicus* CIVs dominated in net samples, but did not contribute much to *Alle alle* chick diet (Tables II and III; total counts: 8 individuals). This confirms reports of discrepancies between species and stage distribution in the sea and in little auk diets reported in other studies. Karnovsky et al. (2003) found a dominance of *C. finmarchicus* CIV and younger in net samples as well, which were absent in gular pouches. They also report *Themisto* sp. and adult krill as common prey and suggest that these fast swimmers are underrepresented in net samples. Golovkin et al. (1972), working north of Novaya Zemlya, state that little auk gular pouches contained several prey species which were rare or absent in net samples. Bradstreet (1982) found that young-of-the-year had a diet of 79% and 91% *Calanus hyperboreus* adult females (AF), while sea samples only consisted of 20% and 26% of that species at two stations, respectively. Steen et al. (2007) report consistently low numbers of *Calanus glacialis* AF in gular pouches, a stage that was not observed at all in net samples along a transect past the bird colony. A recent study covering a total of eight years (Kwasniewski et al. 2012) showed the coupling for *C. glacialis*/*C. finmarchicus* ratio and, in support of earlier studies, they suggested that the foraging ground of the little auk is most likely limited to the Arctic water current, separated by a hydro-

graphical front, from the Atlantic water current and not mixed water masses as in our study.

As little auks rarely collect prey smaller than 2.5 mm (Bradstreet 1982; Weslawski et al. 1999a,b; this study), it seems likely that size is an important criterion for prey selection. While the mechanism for this prey selection remains poorly understood, elevated energy demands during the breeding season force birds to optimize their foraging efficiency. One optimization strategy could be to rigorously select for the larger, more energy rich prey (Macarthur & Pianka 1966). The emerging pattern of Ivlev's I electivity index (Figure 5) indicates that *A. alle* selects for *Calanus* larger than *c.* 2.5 mm and against smaller forms irrespective of species or developmental stage. This supports the view that *Calanus* size is indeed a major factor influencing the diet composition in *A. alle*.

The numerically most important dietary components were *C. glacialis* CVs and CIVs. The abundance of both of these prey was significantly positively autocorrelated for 0.6–1.2 km (CIV) and 0.2–0.6 km (CV) average separation distance (Table IV). On all centre stations and KE10, *C. glacialis* CV were more abundant than *C. finmarchicus* CV, while there were only minor differences between the concentrations of these two copepods at the other stations (Table II). This indicates that local patches of larger zooplankton in high concentrations exist close to the *A. alle* breeding colony as suggested by Golovkin et al. (1972), and we conclude that spatial heterogeneity could be an explanation for the discrepancy between diet and estimated food availability in the adjacent sea as reported elsewhere (e.g. Bradstreet 1982; Steen et al. 2007). This further emphasizes the need for high spatial resolution sampling when studying predator–prey relationships.

#### Implications for *Alle alle* foraging efficiency

To assess how the patchy distributions within our sampling grid would affect feeding efficiency of a planktivorous predator, we estimated the potential energy available for foraging little auks in the different parts of the sampling grid and relate this to literature data on the daily energy demand of chicks and adults. We based our calculations on the four most common functional groups of *Calanus* (stages and species) prey items encountered in the 30 gular pouches (see Table III) and the average energy content on Vogedes et al. (2010): *Calanus glacialis* CIV (59%, 10 J ind.<sup>-1</sup>), *C. glacialis* CV (31%, 16 J ind.<sup>-1</sup>), *Calanus finmarchicus* CV (4%, 10 J ind.<sup>-1</sup>), *Calanus hyperboreus* CIV (3%, 16 J ind.<sup>-1</sup>). The energy per  $m^3$  seawater by these

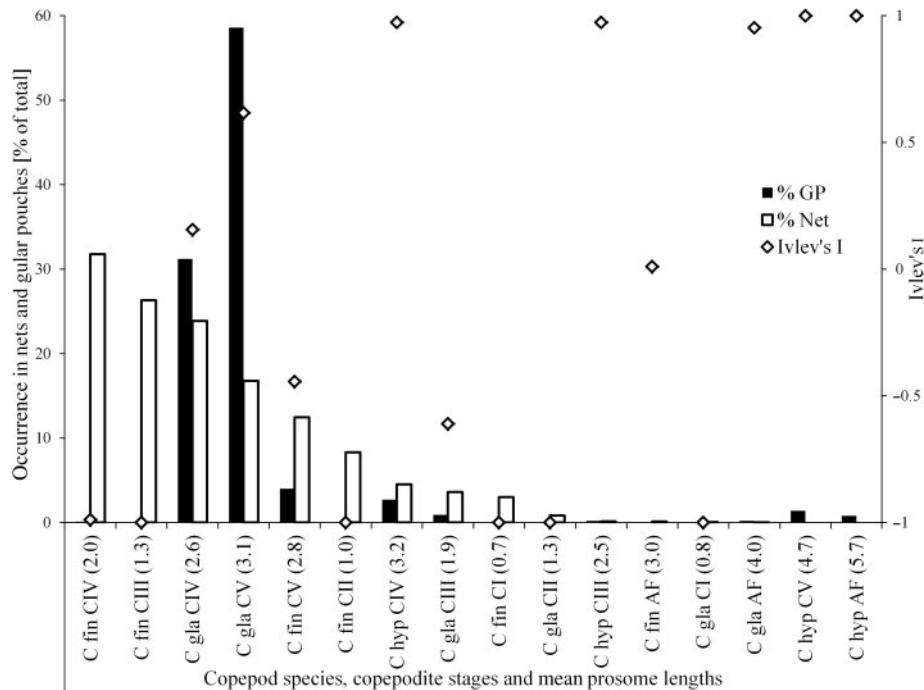


Figure 5. Average percentage of stages of *Calanus* spp. in 26 plankton net samples ('% Net', white bars), 30 gular pouches of little auks (*Alle alle*) from the breeding colony in the vicinity of the study area (% GP, dark bars), and Ivlev's electivity index ('Ivlev's I', diamonds) for each stage and species of *Calanus*. In parentheses average prosome length in mm. The 23.1% *Calanus* indet. prey are not included; C fin = *Calanus finmarchicus*; C gla = *C. glacialis*; C hyp = *C. hyperboreus*.

species/stages ranges from 1.3 kJ m<sup>-3</sup> at station KE7 to 20.8 kJ m<sup>-3</sup> at station CS1.

Published estimates of the energy demand for *Alle alle* chicks during rearing ranges between 104 and 350 kJ day<sup>-1</sup> (Konarzewski et al. 1993; Wojczulanis et al. 2006; Jakubas et al. 2007) and the daily energy expenditure for breeding little auks is estimated to be 600–800 kJ day<sup>-1</sup> (Gabrielsen et al. 1991; Harding et al. 2009; Welcker et al. 2009b).

When collecting food in the high-energy area, a little auk would have to clear every prey item out of 5–18 m<sup>3</sup> of seawater and in the low-energy area out of 100–350 m<sup>3</sup> of seawater, respectively, for the lowest and highest estimated chick energy demand. In addition to this, the parent little auks need to forage for self-maintenance. These numbers illustrate that it is essential for a little auk to find patches of high food concentrations to optimize foraging time spent under water. Single point sampling as in Steen et al. (2007) might give misleading results, both in terms of quantity and quality of the potential prey.

We cannot, of course, rule out that there are patches of higher abundances of prey items on even smaller horizontal scales, or in particular in the vertical, which we did not resolve at all in our study. If, for example, larger copepodite stages have a tendency to accumulate near the layer of chlorophyll maximum, it is likely that the actual ind. m<sup>-3</sup> value is much higher than presented here. The fact that eight specimens of *A. alle*

had *C. hyperboreus* in their gular pouches, which were virtually absent in the net samples (Figure 5) and the rest of the gular pouches (Table III), suggests that some of the birds have been on foraging trips outside the sampling area, probably returning from long foraging trips. This is indeed what was first suggested by Steen et al. (2007) and recently confirmed by GPS-equipped birds from Svalbard (Jakubas et al. 2012).

One has to keep in mind though that the WP2 net undersamples *C. hyperboreus*, which are good swimmers and might escape the approaching net. This is why we chose to focus mainly on *C. glacialis* and *C. finmarchicus*.

### Concluding remarks

Patchiness has long been recognized as a biologically significant trait in plankton ecology (Hardy 1936; Pinel-Alloul 1995), and recently ecological effects of patchiness on different scales have received increasing attention, in particular with regard to predator-prey relationships (Weimerskirch 2007). Our study indicates that dominating *Alle alle* prey aggregated in patches with a characteristic length scale of below 1.2 km (Table IV). For this particular potential feeding ground a sampling grid of less than 2 km would be necessary to cover the variation in the area. Given the logistical demands associated with sampling at such resolution, modern high-resolution

sampling equipment such as continuous net-plankton pumping (Molinero et al. 2008), optical plankton recorder (Pinel-Alloul 1995; Currie et al. 1998) and acoustics (ADCP) (Pinel-Alloul 1995; Tokarev et al. 1998; Coyle 2000; Hembre & Megard 2003) are necessary complements to traditional plankton net tows. Furthermore, the heterogeneity in horizontal distribution also raises questions about the extent and nature of vertical patchiness. A 25 m sampling interval in the vertical as in this study might be too coarse for predator-prey studies such as this one, and thus a finer scale in the vertical is desirable for further studies. Finally, the use of GPS and time/depth loggers on little auks should be extended to get a better idea in which areas and what time frames feeding takes place. The large difference in prey energy content per unit of seawater illustrated that little auks are highly dependent on the existence of patches of energy rich prey within the reach of short foraging trips. A possible change in current patterns that could lead to the disappearance or relocation of these patches is likely to have a great impact on the breeding success of little auks from the Bjørndalen colony.

### Acknowledgements

This study is part of the synoptic ALBERT (Arctic Life: Bridging Ecosystem function using Remote Technologies) campaign, which was a collective effort of different sampling and measuring methods to gain insight into fine scale patchiness of zooplankton and phytoplankton distribution and their effects on little auks and part of the MariClim project (Marine ecosystem consequences of climate induced changes in water masses off West-Spitsbergen). The authors would like to thank three anonymous reviewers for their very helpful comments, as well as Paul E. Renaud, Øystein Varpe, Finlo Cottier and Karen Lone for comments and language proof reading throughout the writing process. We are also thankful to Sanna Majaneva and Mikko Vihtakari for their help with gular pouch sampling and sample analysis as well as for Alexey Pavlov's help during the intensive at-sea sampling campaign. Logistics were provided by UNIS. This paper contributes to the NFR project Circa (project number 214271/F20). Jørgen Berge was financially supported by the NFR project EWMA (project number 195160).

### References

Aksnes DL, Utne ACW. 1997. A revised model of visual range in fish. *Sarsia* 82:137–47.

- Beardsley RC, Epstein AW, Chen C, Wishner KF, Macaulay MC, Kenney RD. 1996. Spatial variability in zooplankton abundance near feeding right whales in the Great South Channel. *Deep Sea Research II* 43:1601–25.
- Bradstreet MSW. 1982. Pelagic feeding ecology of dovekies, *Alle alle*, in Lancaster Sound and Western Baffin Bay. *Arctic* 35:126–40.
- Brooks JL, Dodson SI. 1965. Predation body size and composition of plankton. *Science* 150:28–35.
- Brown ZW, Welcker J, Harding AMA, Walkusz W, Karnovsky NJ. 2012. Divergent diving behavior during short and long trips of a bimodal forager, the little auk *Alle alle*. *Journal of Avian Biology* 43:215–26.
- Clarke KR, Somerfield PJ, Gorley RN. 2008. Testing of null hypotheses in exploratory community analyses: Similarity profiles and biota-environment linkage. *Journal of Experimental Marine Biology and Ecology* 366:56–69.
- Coyle KO. 2000. Acoustic estimates of zooplankton biomass and distribution: Application of canonical correlation to scaling of multifrequency acoustic data. *Canadian Journal of Fisheries and Aquatic Sciences* 57:2306–18.
- Currie WJS, Claereboudt MR, Roff JC. 1998. Gaps and patches in the ocean: A one-dimensional analysis of planktonic distributions. *Marine Ecology Progress Series* 171:15–21.
- Daase M, Eiane K, Aksnes DL, Vogedes D. 2008. Vertical distribution of *Calanus* spp. and *Metridia longa* at four Arctic locations. *Marine Biology Research* 4:193–207.
- Eiane K, Ohman MD. 2004. Stage-specific mortality of *Calanus finmarchicus*, *Pseudocalanus elongatus* and *Oithona similis* on Fladen Ground, North Sea, during a spring bloom. *Marine Ecology Progress Series* 268:183–93.
- Falk K, Pedersen CE, Kampp K. 2000. Measurements of diving depth in dovekies (*Alle alle*). *The Auk* 117:522–25.
- Gabrielsen GW, Taylor JRE, Konarzewski M, Mehlum F. 1991. Field and laboratory metabolism and thermoregulation in dovekies (*Alle alle*). *The Auk* 108:71–78.
- Golovkin AN, Zelikman EA, Georgiev AA. 1972. Biology and the feeding connections of little auks (*Plutus alle*). In: Golovkin AN, editor. Peculiarities of Biological Productivity of Waters Near Bird's Bazaars in the North of Novaya Zemlya. Leningrad: Nauka, Academy of Sciences of the USSR, p 84–91. (in Russian)
- Greene CH, Landry MR. 1985. Patterns of prey selection in the cruising calanoid predator *Euchaeta elongata*. *Ecology* 66:1408–16.
- Harding AMA, Egevang C, Walkusz W, Merkel F, Blanc S, Gremillet D. 2009. Estimating prey capture rates of a planktivorous seabird, the little auk (*Alle alle*), using diet, diving behaviour, and energy consumption. *Polar Biology* 32:785–96.
- Hardy AC. 1936. Observations on the uneven distribution of oceanic plankton. *Discovery Reports* 11:511–38.
- Haury LR. 1976. A comparison of zooplankton patterns in the California Current and North Pacific Central Gyre. *Marine Biology* 37:159–67.
- Hembre LK, Megard RO. 2003. Seasonal and diel patchiness of a *Daphnia* population: An acoustic analysis. *Limnology and Oceanography* 48:2221–33.
- Ivlev VS. 1961. *Experimental Ecology of the Feeding of Fishes*. New Haven, CT: Yale University Press. 302 pages.
- Jakubas D, Wojczulanis-Jakubas K, Walkusz W. 2007. Response of dovekie to changes in food availability. *Waterbirds* 30:421–28.
- Jakubas D, Iliszko L, Wojczulanis-Jakubas K, Stempniewicz L. 2012. Foraging by little auks in the distant marginal sea ice zone during the chick-rearing period. *Polar Biology* 35:73–81.
- Karnovsky NJ, Kwasniewski S, Weslawski JM, Walkusz W, Beszczyska-Möller A. 2003. Foraging behavior of little auks

- in a heterogeneous environment. *Marine Ecology Progress Series* 253:289–303.
- Karnovsky NJ, Brown ZW, Welcker J, Harding AMA, Walkusz W, Cavalcanti A, et al. 2011. Inter-colony comparison of diving behavior of an Arctic top predator: implications for warming in the Greenland Sea. *Marine Ecology Progress Series* 440:229–40.
- Kjørboe T, Bagoien E, Thygesen UH. 2005. Blind dating – Mate finding in planktonic copepods. II. The pheromone cloud of *Pseudocalanus elongatus*. *Marine Ecology Progress Series* 300:117–28.
- Konarzewski M, Taylor JRE, Gabrielsen GW. 1993. Chick energy requirements and adult energy expenditures of dovekies (*Alle alle*). *The Auk* 110:343–53.
- Kwasniewski S, Gluchowska M, Walkusz W, Karnovsky NJ, Jakubas D, Wojczulanis-Jakubas K, et al. 2012. Interannual changes in zooplankton on the West Spitsbergen Shelf in relation to hydrography and their consequences for the diet of planktivorous seabirds. *ICES Journal of Marine Science* 69:890–901.
- Ledang AB. 2009. Coupled Physical and Biological Processes Related to Mesoscale Eddy Field in Kongsfjorden and Isfjorden. Bergen: University of Bergen. 89 pages.
- Legendre L, Demers S, Lefaivre D. 1986. Biological production at marine ergoclines. In: Nihoul JCJ, editor. *Marine Interfaces Ecohydrodynamics*. Amsterdam: Elsevier, Elsevier Oceanography Series 42:1–29.
- Legendre P, Legendre L. 1998. *Numerical Ecology*. Oxford: Elsevier. 870 pages.
- Macarthur RH, Pianka ER. 1966. On optimal use of a patchy environment. *American Naturalist* 100:603–09.
- Mann KH, Lazier JRN. 2006. *Dynamics of Marine Ecosystems*. 3rd edition. Oxford: Blackwell Publishing. 512 pages.
- Molinero JC, Ibanez F, Souissi S, Bosc E, Nival P. 2008. Surface patterns of zooplankton spatial variability detected by high frequency sampling in the NW Mediterranean. Role of density fronts. *Journal of Marine Systems* 69:271–82.
- Moran PAP. 1950. Notes on continuous stochastic phenomena. *Biometrika* 37:17–23.
- Motoda S. 1959. Devices of simple plankton apparatus. *Memoirs of the Faculty of Fisheries, Hokkaido University* 7:73–94.
- Nilsen F, Cottier F, Skogseth R, Mattsson S. 2008. Fjord–shelf exchanges controlled by ice and brine production: The interannual variation of Atlantic Water in Isfjorden, Svalbard. *Continental Shelf Research* 28:1838–53.
- Pendleton DE, Pershing AJ, Brown MW, Mayo CA, Kenney RD, Record NR, et al. 2009. Regional-scale mean copepod concentration indicates relative abundance of North Atlantic right whales. *Marine Ecology Progress Series* 378:211–25.
- Pinel-Alloul B. 1995. Spatial heterogeneity as a multiscale characteristic of zooplankton community. *Hydrobiologia* 300:17–42.
- Pitchford JW, Brindley J. 2001. Prey patchiness, predator survival and fish recruitment. *Bulletin of Mathematical Biology* 63:527–46.
- Rangel TF, Diniz JAF, Bini LM. 2010. SAM: A comprehensive application for Spatial Analysis in Macroecology. *Ecography* 33:46–50.
- Saito H, Kjørboe T. 2001. Feeding rates in the chaetognath *Sagitta elegans*: Effects of prey size, prey swimming behaviour and small-scale turbulence. *Journal of Plankton Research* 23:1385–98.
- Schlitzer R. 2011. *Ocean Data View*. 4.4.4 – 2012. Bremerhaven: Alfred-Wegener-Institute. Computer Program.
- Steen H, Vøgedes D, Broms F, Falk-Petersen S, Berge J. 2007. Little auks (*Alle alle*) breeding in a high Arctic fjord system: Bimodal foraging strategies as a response to poor food quality? *Polar Research* 26:118–25.
- Tokarev YN, Williams R, Piontkovski SA. 1998. Small-scale plankton patchiness in the Black Sea euphotic layer. *Hydrobiologia* 376:363–67.
- Troupin C, Beckers J-M, Ouberdous M, Sirjacobs D. 2009. DIVA - Data-Interpolating Variational Analysis. 4.3.0. Liege: SeaData-Net. Computer Program.
- Tsuda A, Sugisaki H, Ishimaru T, Saino T, Sato T. 1993. White-noise-like distribution of the oceanic copepod *Neocalanus cristatus* in the subarctic North Pacific. *Marine Ecology Progress Series* 97:39–46.
- Vilar JMG, Sole RV, Rubi JM. 2003. On the origin of plankton patchiness. *Physica A – Statistical Mechanics and its Applications* 317:239–46.
- Vøgedes D, Varpe Ø, Søreide JE, Graeve M, Berge J, Falk-Petersen S. 2010. Lipid sac area as a proxy for individual lipid content of arctic calanoid copepods. *Journal of Plankton Research* 32:1471–77.
- Weimerskirch H. 2007. Are seabirds foraging for unpredictable resources? *Deep Sea Research II* 54:211–23.
- Welcker J, Harding AMA, Karnovsky NJ, Steen H, Strøm H, Gabrielsen GW. 2009a. Flexibility in the bimodal foraging strategy of a high Arctic alcid, the little auk, *Alle alle*. *Journal of Avian Biology* 40:388–99.
- Welcker J, Harding AMA, Kitaysky AS, Speakman JR, Gabrielsen GW. 2009b. Daily energy expenditure increases in response to low nutritional stress in an Arctic-breeding seabird with no effect on mortality. *Functional Ecology* 23:1081–90.
- Weslawski JM, Kosztajn J, Kwasniewski S, Stempniewicz L, Malinga B. 1999a. Summer food resources of the little auk, *Alle alle* (L.) in the European Arctic seas. *Polish Polar Research* 20:387–403.
- Weslawski JM, Stempniewicz L, Mehlum F. 1999b. Summer feeding strategy of the little auk (*Alle alle*) from Bjørnøya, Barents Sea. *Polar Biology* 21:129–34.
- Weydmann A, Kwasniewski S. 2008. Distribution of *Calanus* populations in a glaciated fjord in the Arctic (Hornsund, Spitsbergen) – The interplay between biological and physical factors. *Polar Biology* 31:1023–35.
- Wojczulanis K, Jakubas D, Walkusz W, Wennerberg L. 2006. Differences in food delivered to chicks by males and females of little auks (*Alle alle*) on South Spitsbergen. *Journal of Ornithology* 147:543–48.
- Young KV, Dower JF, Pepin P. 2009. A hierarchical analysis of the spatial distribution of larval fish prey. *Journal of Plankton Research* 31:687–700.